

It's Easy
Know your
tsunami zone



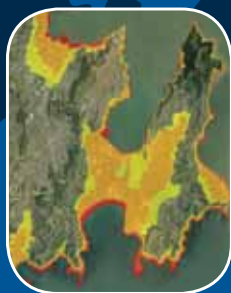
Kapiti



Porirua



Hutt Valley



Wellington
City



Lake Onoke



Riversdale
Beach



Castlepoint



Ngawi

A tsunami is a series of sea waves or surges caused by a sudden event (such as an earthquake) beneath, or near, the ocean.

Distant tsunami

are generated from a long way away, such as from across the Pacific Ocean in Chile. In this case, we will have more than three hours warning time for New Zealand.

Regional tsunami

are generated between one and three hours travel time away.

Local tsunami

are generated close to New Zealand. This type of tsunami is dangerous because we may only have a few minutes warning. Therefore, you would need to act immediately.

Evacuation zones

There are three evacuation zones: **red, orange and yellow.**

This allows the authorities to evacuate the appropriate zone(s) according to the estimated size of the tsunami or, in a local earthquake to allow for the worst case scenario. E.g. For a small tsunami we may evacuate the red evacuation zone only.

Maps showing the three evacuation zones have been developed by each local council.

To view evacuation maps either contact your council or visit:

www.getprepared.co.nz



TIP:

Find out which evacuation zones you live/work and play in, and what actions you need to take for both natural and official warnings.

www.getprepared.co.nz



Types of warning

Natural warnings

If a tsunami is triggered close to the Wellington region, there may be no time for an official warning to be given.

If you experience any of the following:

- A strong earthquake (i.e. it's hard to stand up) or
- A weak, rolling earthquake with shaking of unusually long duration (i.e. a minute or more)
- The ocean behaves strangely (unusual noises from the ocean or the ocean rushes in or out)

TAKE ACTION:

Immediately evacuate the red, orange and yellow zones. Do not wait for official warnings, as a tsunami may be only minutes away.

IMPORTANT:

A tsunami can have more than one wave or surge, with the following waves or surges often larger. You should not return to the coast until the official all clear is given. This may be up to 24 hours or more.



Official warnings

Official warnings will be issued by Civil Defence Emergency Management officials. These include your council and emergency services.

TAKE ACTION:

Follow official instructions and evacuate from the zone(s) stated in the warning and stay out until the official 'all-clear' is given.

Informal warnings

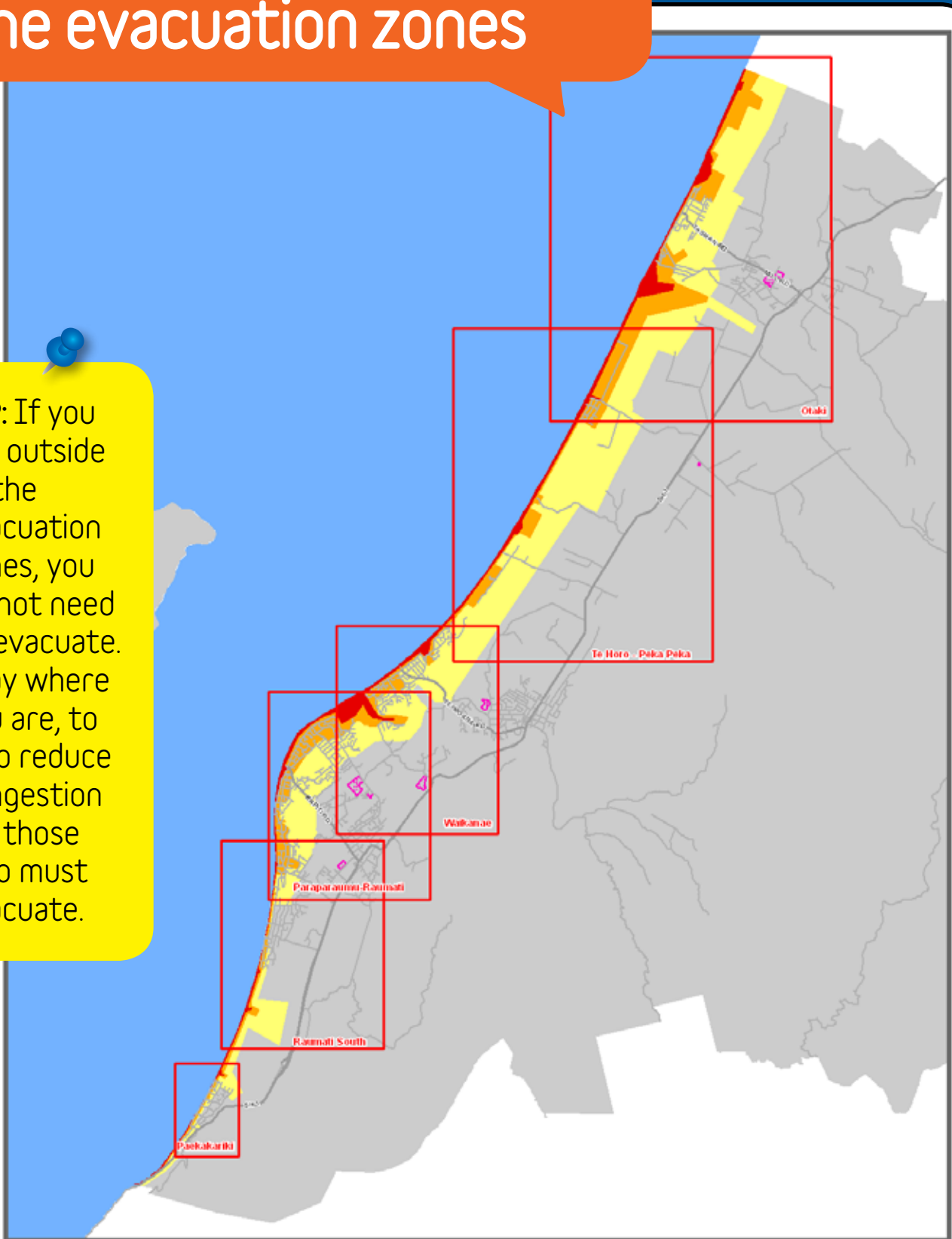
Informal warnings may come from friends, family, international media, and the internet.

TAKE ACTION:

Consider evacuating from all zones. Verify the warning only once evacuated or on-route if it won't delay you.

Familiarize yourself with the evacuation zones

TIP: If you are outside of the evacuation zones, you do not need to evacuate. Stay where you are, to help reduce congestion for those who must evacuate.



Tsunami Evacuation Zones

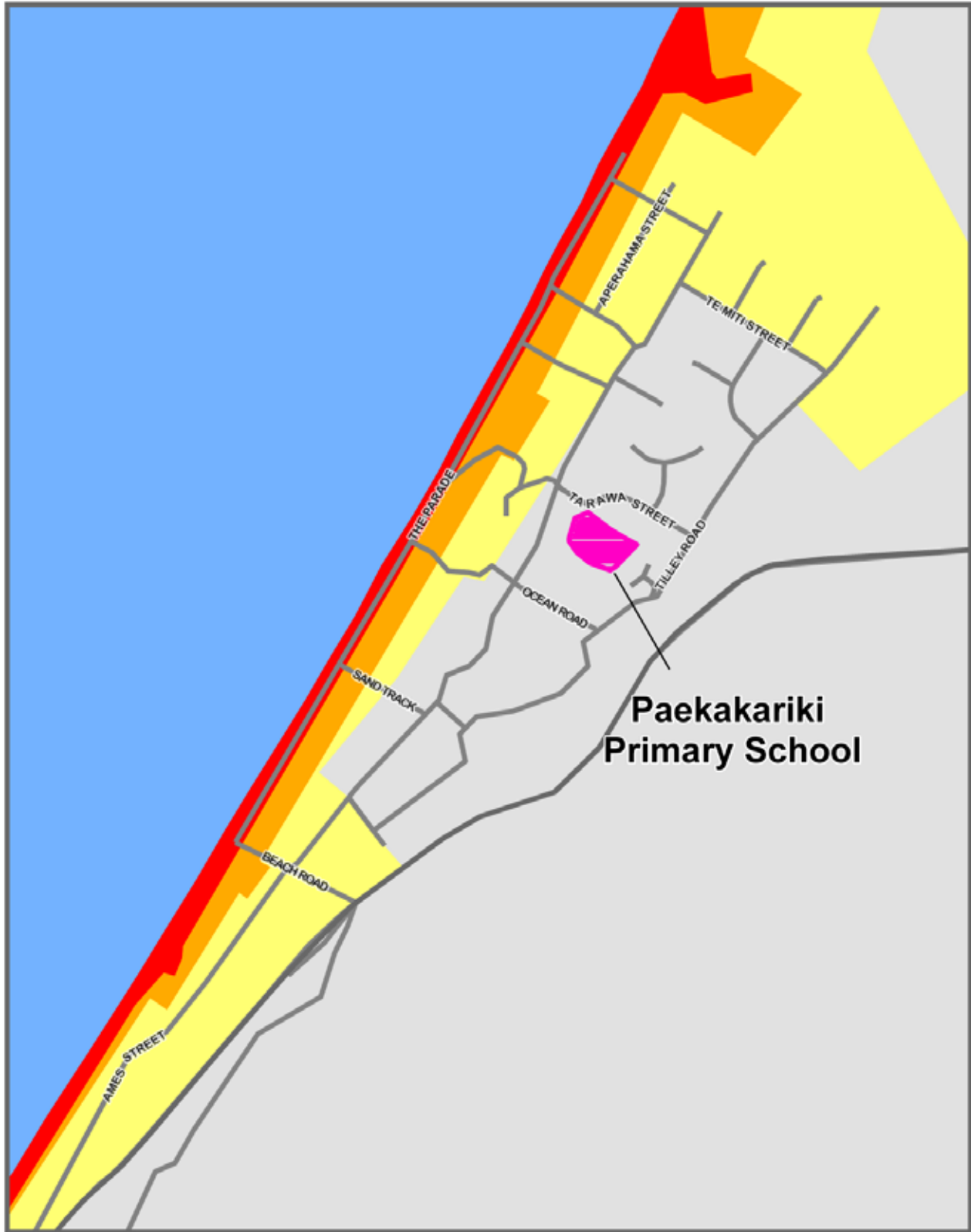
- Red Evacuation Zone
- Orange Evacuation Zone
- Self Evacuation Zone
- Assembly Areas
- Safe Zone



Scale A4 1:145,00

0 1,000 2,000 4,000 6,000 8,000 Meters

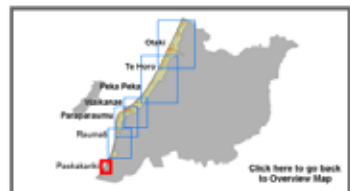


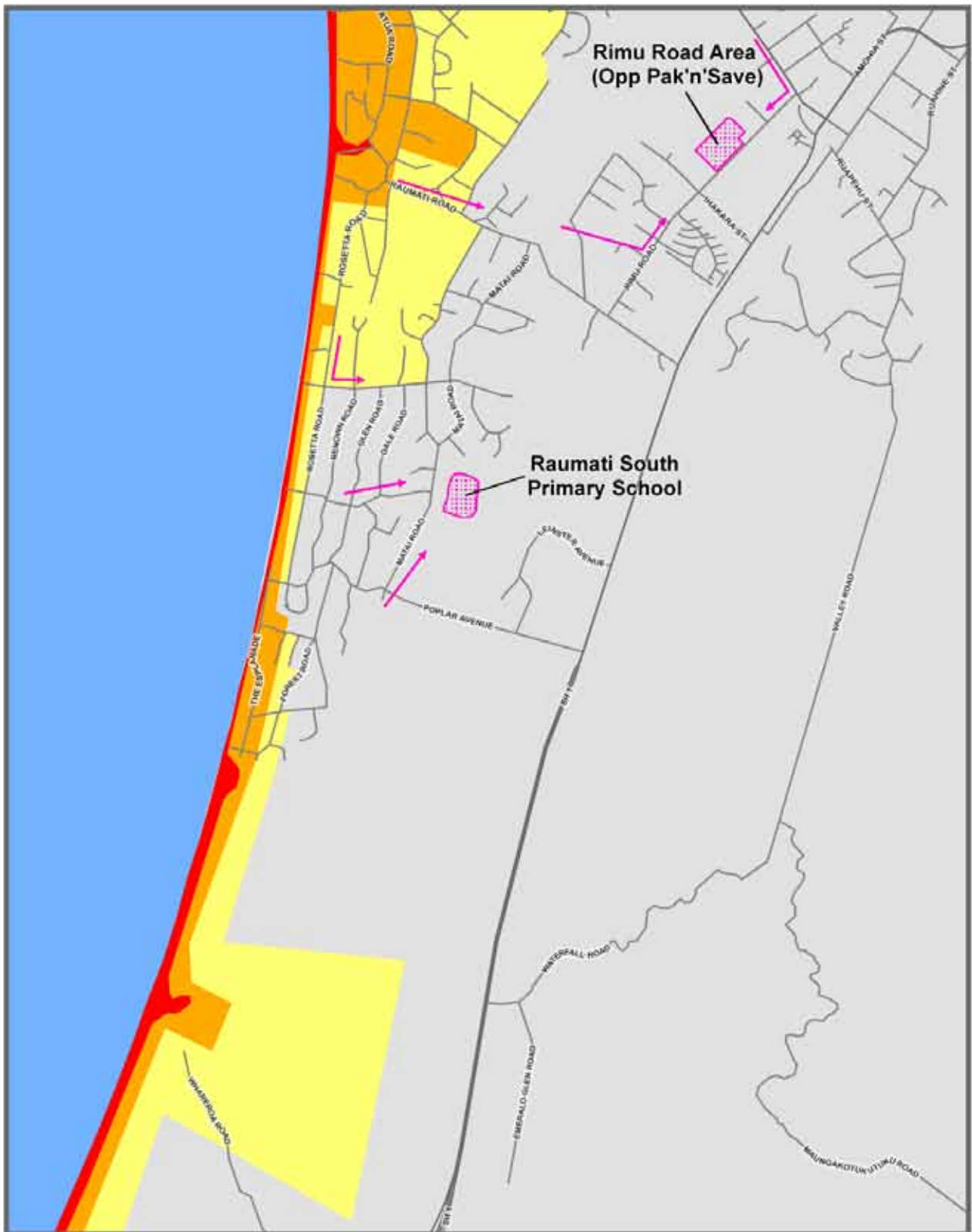


Tsunami Evacuation Zones - Paekakariki

- Red Evacuation Zone
- Orange Evacuation Zone
- Yellow Evacuation Zone

Assembly Areas
Scale A4 1: 10000

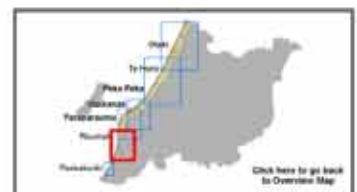




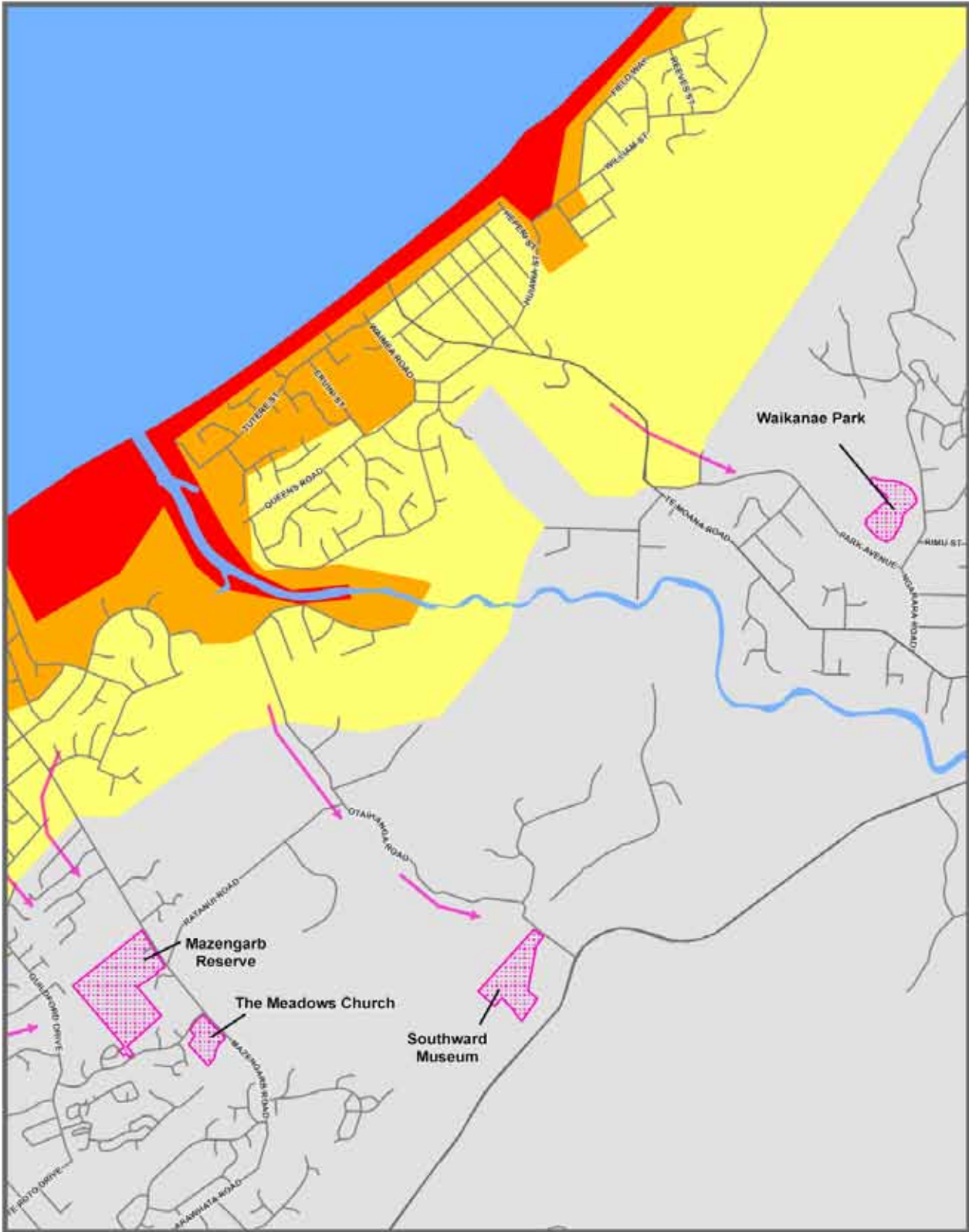
Tsunami Evacuation Zones - Raunati South

- Red Evacuation Zone
- Orange Evacuation Zone
- Yellow Evacuation Zone

Assembly Areas
 Scale A4 1: 25000
 Date Printed: August 2010



Click here to go back to Overview Map

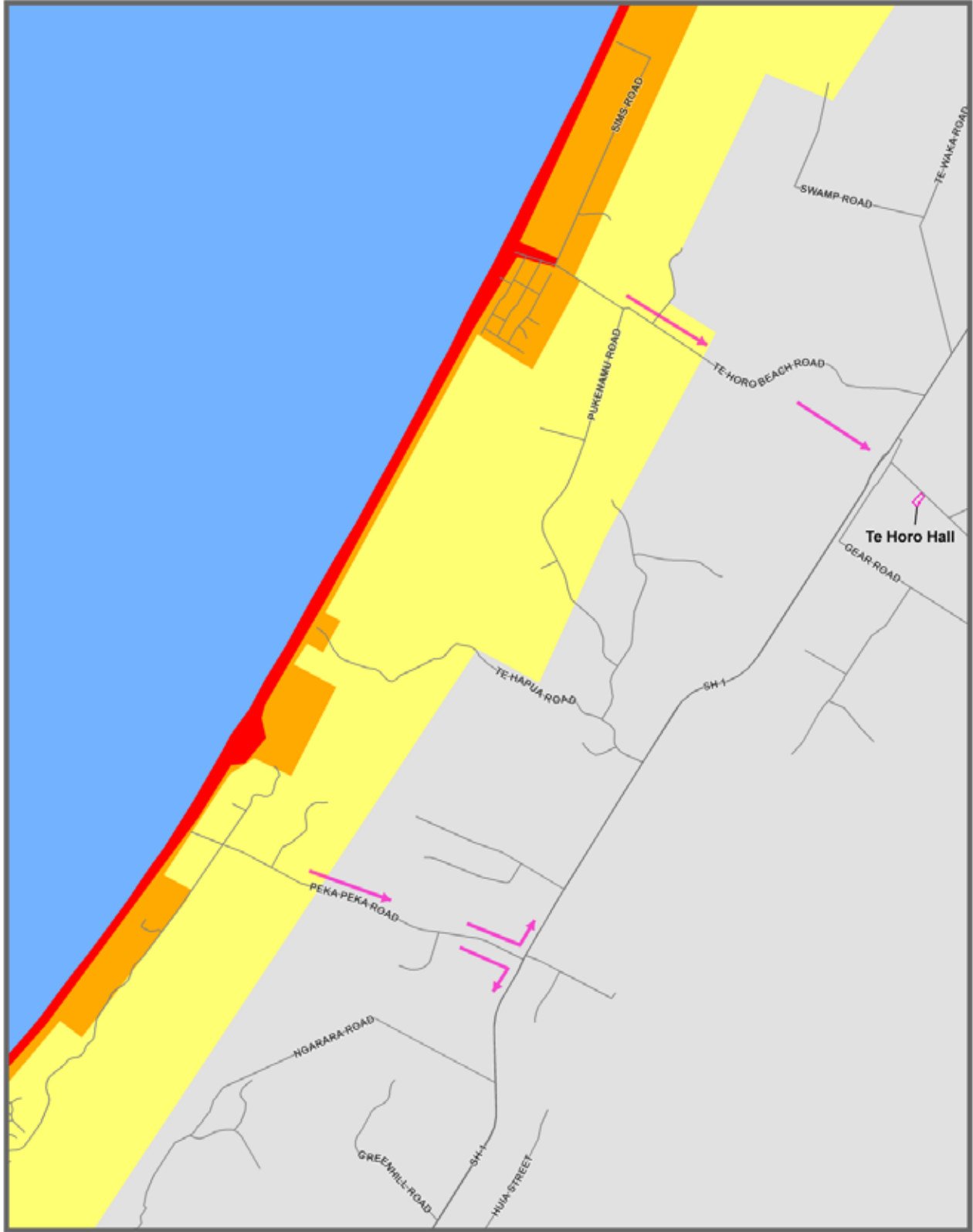


Tsunami Evacuation Zones - Waikanae

- Red Evacuation Zone
- Orange Evacuation Zone
- Yellow Evacuation Zone
- Assembly Areas

Scale A4 1: 25000
Date Printed: August 2010

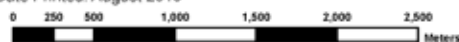


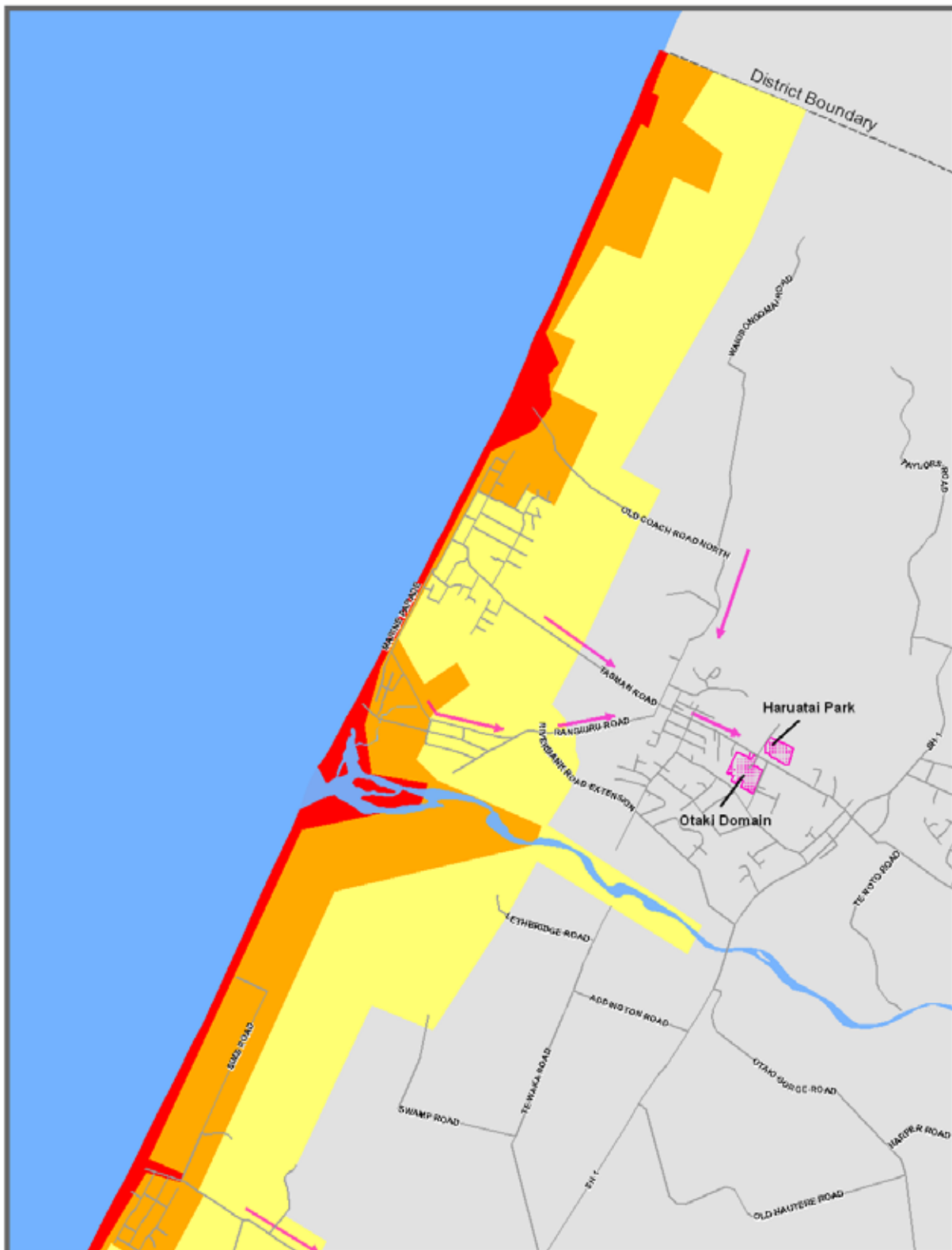


Tsunami Evacuation Zones - Te Horo - Peka Peka

- Red Evacuation Zone
- Orange Evacuation Zone
- Yellow Evacuation Zone

Assembly Areas
 Scale A4 1: 40000
 Date Printed: August 2010





Tsunami Evacuation Zones - Otaki

- Red Evacuation Zone
- Orange Evacuation Zone
- Yellow Evacuation Zone

- Assembly Areas



Scale A4 1:45,000



Warning systems and information

Tsunami warnings can come from a variety of sources:

- TV
- Radio
- Continuous sirens
- Public address systems, including helicopters
- Text alerts
- RSS feeds
- Family and friends

After you hear a tsunami warning, go to the following places to find out more –

- Turn on your TV
- Listen to your local radio station:
- Contact your council or visit their website (see back page for details)

If the official warning requires you to evacuate, you are best to make your way to friends or family outside of the evacuation zone. Another option will be to go to an official evacuation location, information on the specific locations in your area will be given on the day.

Evacuation

Evacuate via the routes drawn on the maps provided by your council.

Follow signed routes where present. Walk quickly if possible, drive only if essential. If driving, keep going once you are well outside of all evacuation zones, to allow room for others behind you.

Stay out of evacuation zones until given the official 'all-clear'.

Stay away from beach and coastal areas for 24 hours after any tsunami warning, even small waves can be dangerous.

IMPORTANT:

If you experience any of the following: a strong earthquake, a weak rolling earthquake that lasts a long time, or the ocean behaves strangely (e.g. rushes in or out) immediately evacuate all zones.

Your Local Radio

KAPITI:

- Classic Hits 92.7 FM
- Newstalk ZB 89.5 FM
- More FM 90.3 FM
- The Breeze 100.7 FM
- National Radio (Radio NZ) 567 AM, 101.5 FM
- Radio Live 99.1 FM
- Beach FM 106.3 FM

WAIRARAPA:

- Classic Hits 90.3 FM
- Newstalk ZB 846 AM
- More FM 89.5 FM
- The Breeze 99.9 FM
- National Radio (Radio NZ) 1071 AM, 101.5 FM
- Radio Live 98.3 FM

WELLINGTON/HUTT VALLEY, PORIRUA:

- Classic Hits 90 .1 FM
- Newstalk ZB 1035 AM
- More FM 95.3 FM, 99.7 FM
- The Breeze 94.1 FM, 98.5 FM
- National Radio (Radio NZ) 567 AM, 101.3 FM, 101.7FM, 104.5 FM
- Radio Live 98.9 FM, 1233 AM

Be prepared to evacuate

Keep these items handy in case of an emergency



Water



Warm clothing



Suitable walking shoes and socks



Back Pack



Waterproof clothing



Torch and spare batteries



Food



Household Emergency Plan



Essential medication & copies of important documents

For more detailed information about all the topics included in this document, please contact your council using the details provided below:

Greater Wellington Regional Council

04 384 5708
www.getprepared.co.nz

Wellington City Council

04 499 4444
www.wemo.org.nz



WemoNZ

Porirua City Council

04 237 5089
www.pcc.govt.nz

Kapiti Coast District Council

04 296 4700
www.kapiticoast.govt.nz

Hutt City Council

04 570 6666
www.huttcity.govt.nz

Upper Hutt City Council

04 527 2169
www.upperhuttcity.com

Carterton District Council

06 379 4030
www.cartertondc.co.nz

Masterton District Council

06 370 6300
www.mstn.govt.nz

South Wairarapa District Council

06 306 9611
www.swdc.govt.nz