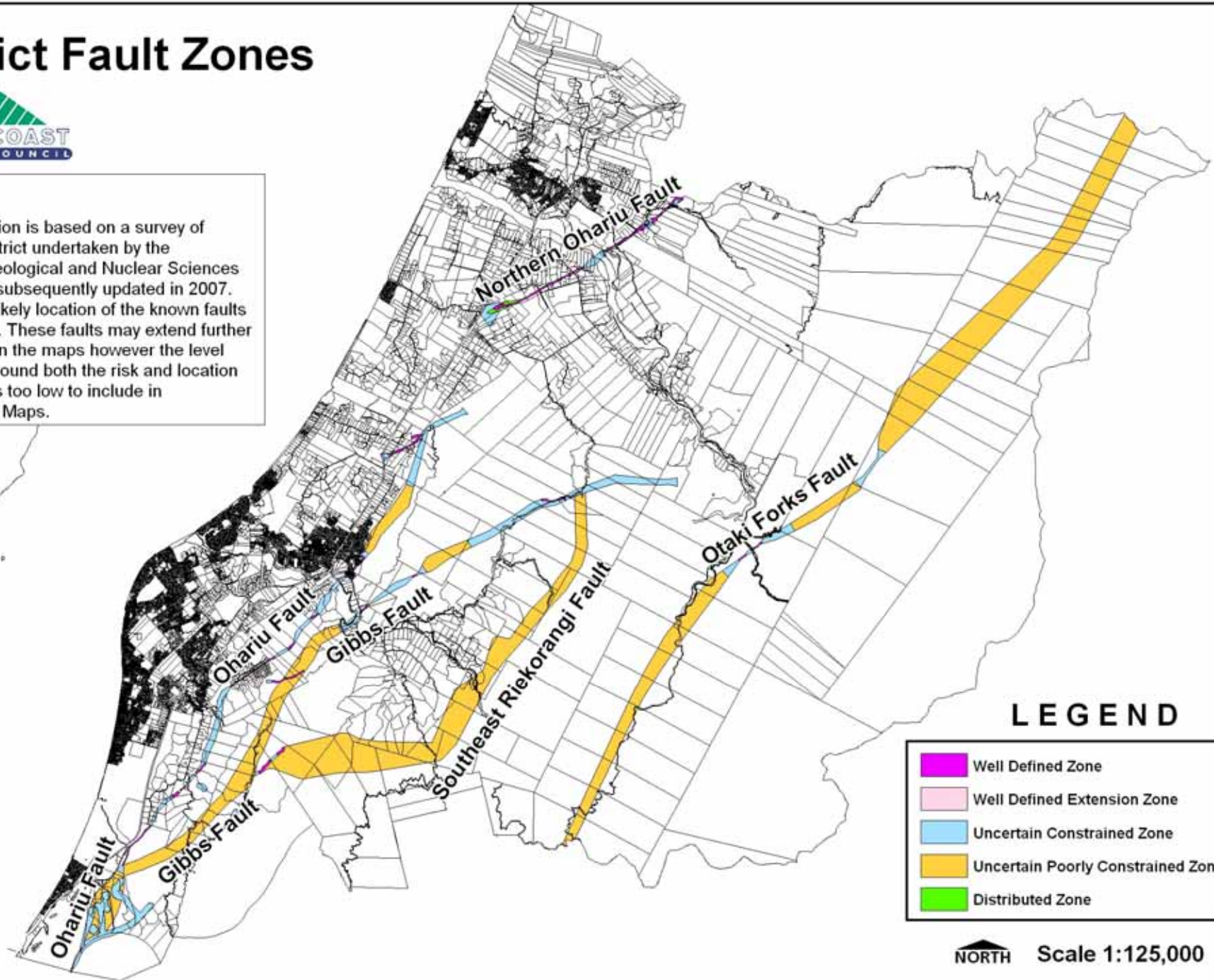


# District Fault Zones



## NOTES:

This information is based on a survey of the Kapiti District undertaken by the Institute of Geological and Nuclear Sciences in 2003, and subsequently updated in 2007. It shows the likely location of the known faults in the District. These faults may extend further than shown on the maps however the level of certainty around both the risk and location of the faults is too low to include in these Hazard Maps.



## LEGEND

	Well Defined Zone
	Well Defined Extension Zone
	Uncertain Constrained Zone
	Uncertain Poorly Constrained Zone
	Distributed Zone

NORTH Scale 1:125,000