

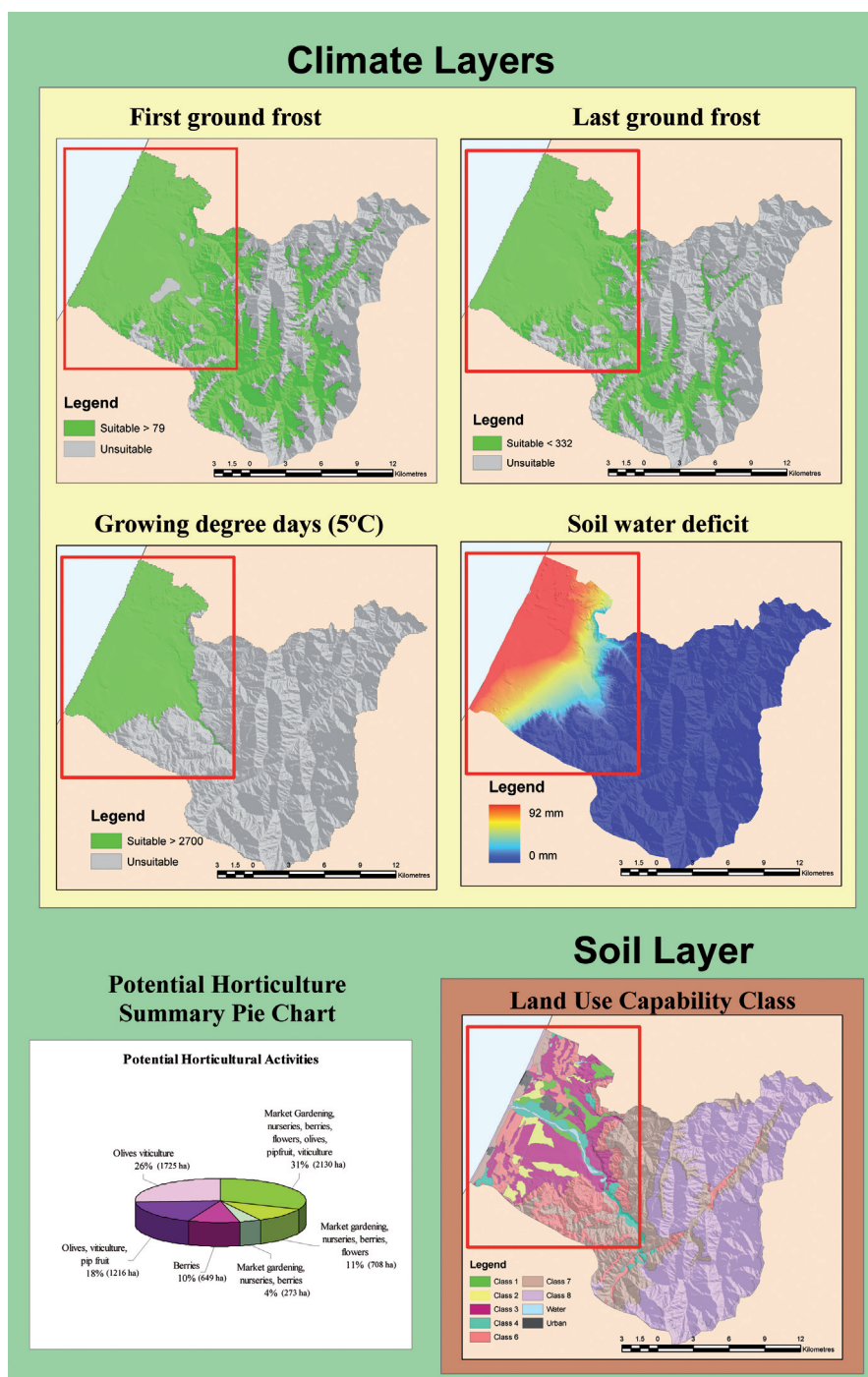
The 2005 study referred to above points out that the climate and water supply are generally not limiting factors for growing crops on the flatter lands in the northern part of the district. The same study also highlights the large number of Class 1, 2 and 3 soils in that area, suitable for growing a range of crops – from vegetables on Class 1 soils, to berries, olives and grapes on Class 3 soils.

This map on the previous page shows the potential horticultural uses in the northern part of the District according to this assessment.

The productive potential of the northern part of the District is much higher than its current use. The 2005 study estimated that 671 hectares in this area were in horticultural production - only 10% of the at least 6700 hectares in that area that could be used for some form of horticulture. While the researchers pointed out that

market factors and labour supply/skills would be limiting factors in reaching capacity, a 50% increase in the amount of land devoted to horticulture would increase revenue (gross output at the farm gate) by \$9.3 million and increase employment by 135 full-time jobs.

The researchers also acknowledged the role of pastoral and dairy farming in the District, reflected in the amount of land currently used for grazing sheep and cattle. In fact, more than half the land in the Kāpiti Coast District is categorised as “grassland” according to an interim report from Landcare Research². The 2005 research team estimated that pastoral and dairy farming could increase its productivity to some degree without limiting the expansion of horticulture. However, horticulture is more dependent than grazing on the protection of quality soils, so horticulture is more threatened by any loss of the productive potential of soils.



² “Assessment of Rural Productivity Potential in the Greater Ōtaki Area: Scenarios and Options for a Sustainable Food Future – First Interim Report,” August 2010, Landcare Research: Manaaki Whenua.