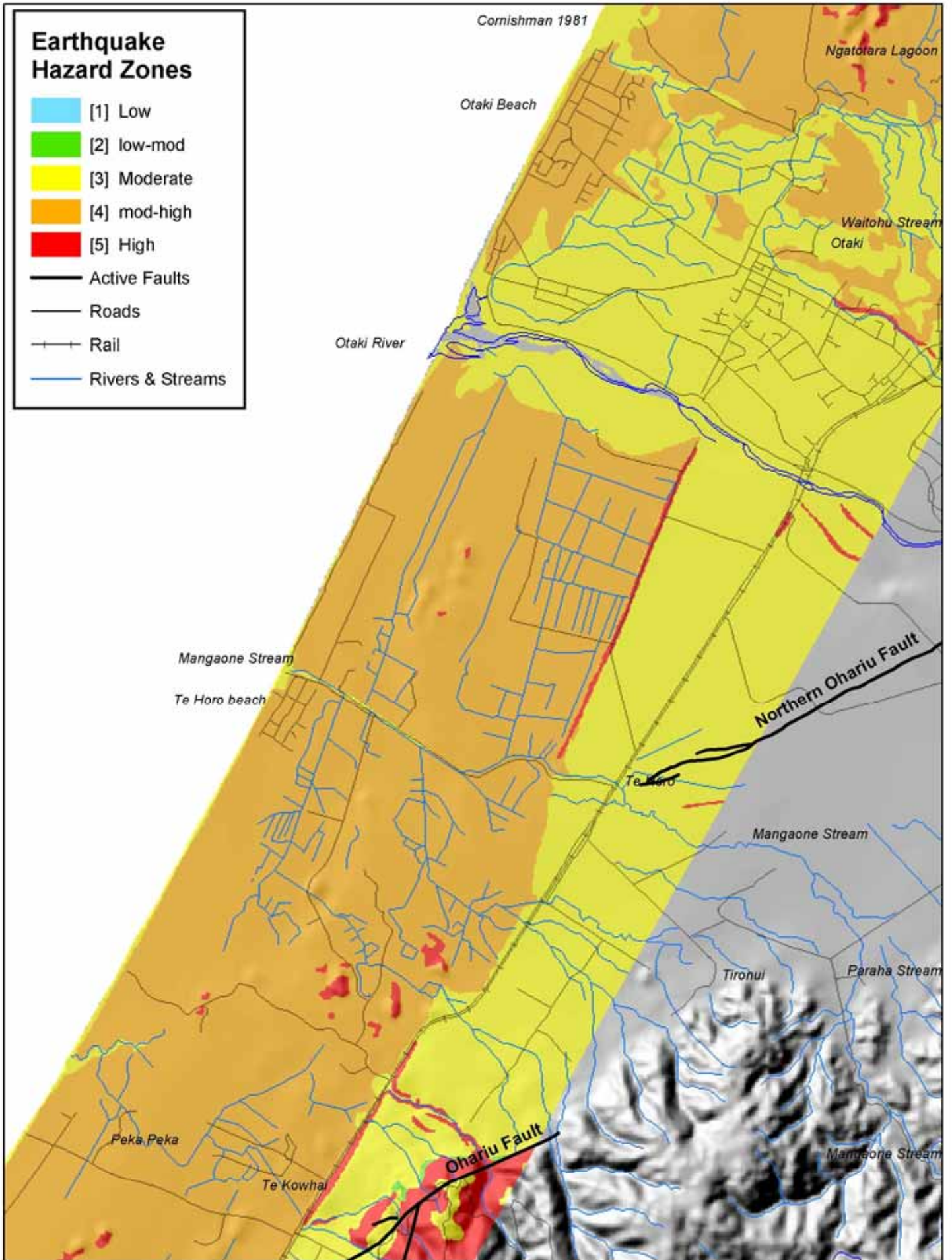


Earthquake Hazard Zones

- [1] Low
- [2] low-mod
- [3] Moderate
- [4] mod-high
- [5] High
- Active Faults
- Roads
- Rail
- Rivers & Streams



TITLE: KAPITI COAST (NORTH) COMBINED EARTHQUAKE RISK

[INCLUDES RISK FROM GROUND SHAKING, LIQUEFACTION AND EARTHQUAKE INDUCED SLOPE FAILURE]

0 0.25 0.5 1 1.5 2 km

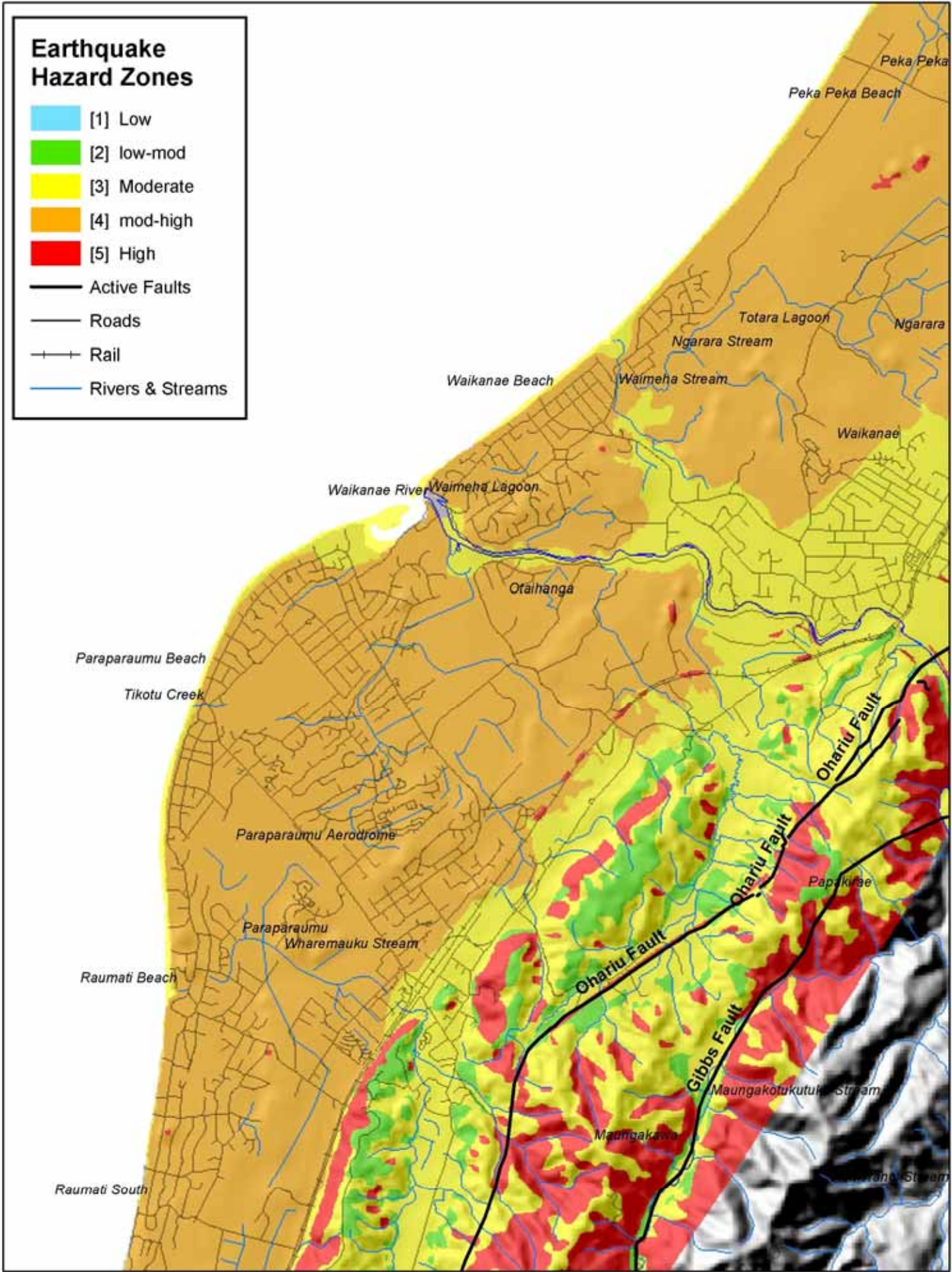
1:50,000



Earthquake Hazard Zones

- [1] Low
- [2] low-mod
- [3] Moderate
- [4] mod-high
- [5] High

- Active Faults
- Roads
- Rail
- Rivers & Streams



TITLE: KAPITI COAST (CENTRAL) COMBINED EARTHQUAKE RISK

[INCLUDES RISK FROM GROUND SHAKING, LIQUEFACTION AND EARTHQUAKE INDUCED SLOPE FAILURE]

0 0.25 0.5 1 1.5 2 km

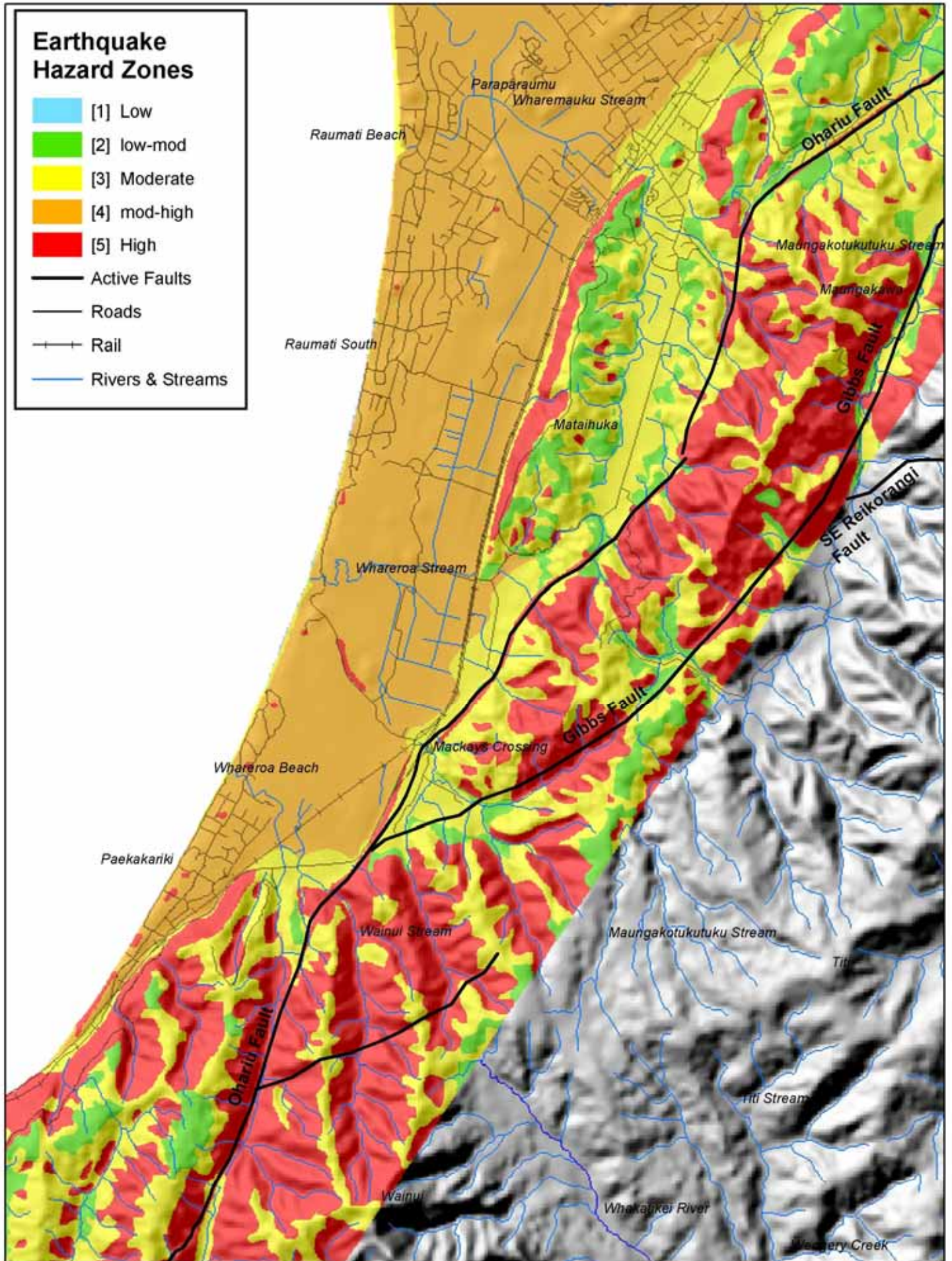
1:50,000



Earthquake Hazard Zones

- [1] Low
- [2] low-mod
- [3] Moderate
- [4] mod-high
- [5] High

- Active Faults
- Roads
- Rail
- Rivers & Streams



TITLE: KAPITI COAST (SOUTH) COMBINED EARTHQUAKE RISK

[INCLUDES RISK FROM GROUND SHAKING, LIQUEFACTION AND EARTHQUAKE INDUCED SLOPE FAILURE]

0 0.25 0.5 1 1.5 2 km

1:50,000

