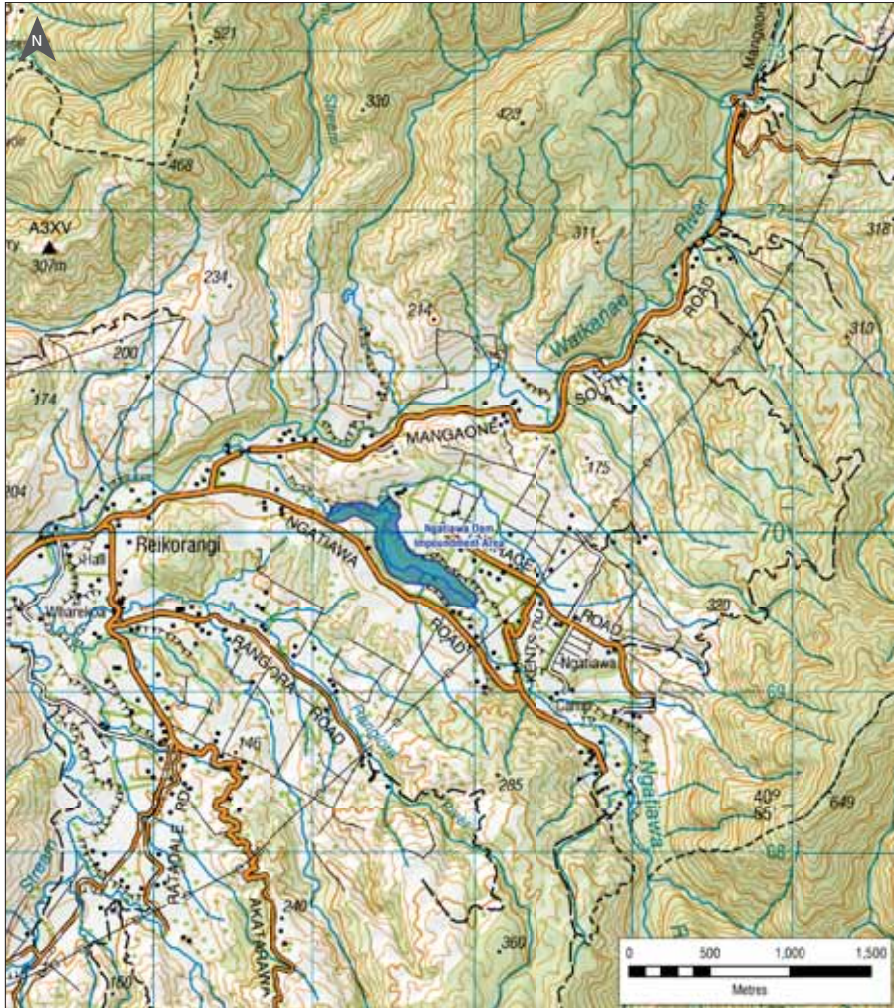
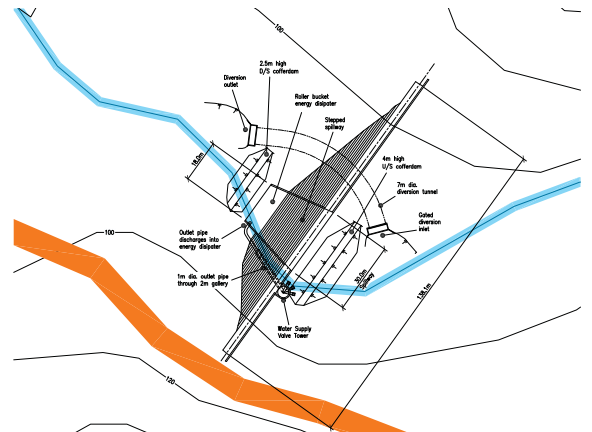


our water is precious he taonga te wai

Ngatiawa Dam



- Dam and reservoir in the Ngatiawa River, near to the confluence with the Waikanae River.
- Rainfall in the Ngatiawa River catchment would be collected and stored for controlled release during times of low flows in the Waikanae River.
- 32m to 35m high dam.



View of valley showing possible dam crest height



Example of a similar type of dam

This information is based on preliminary concept design only and may change following further investigations and design work.