

# EMERGENCY MANAGEMENT

Risk and Assurance Committee

15 Feb 24



# What is Emergency Management?

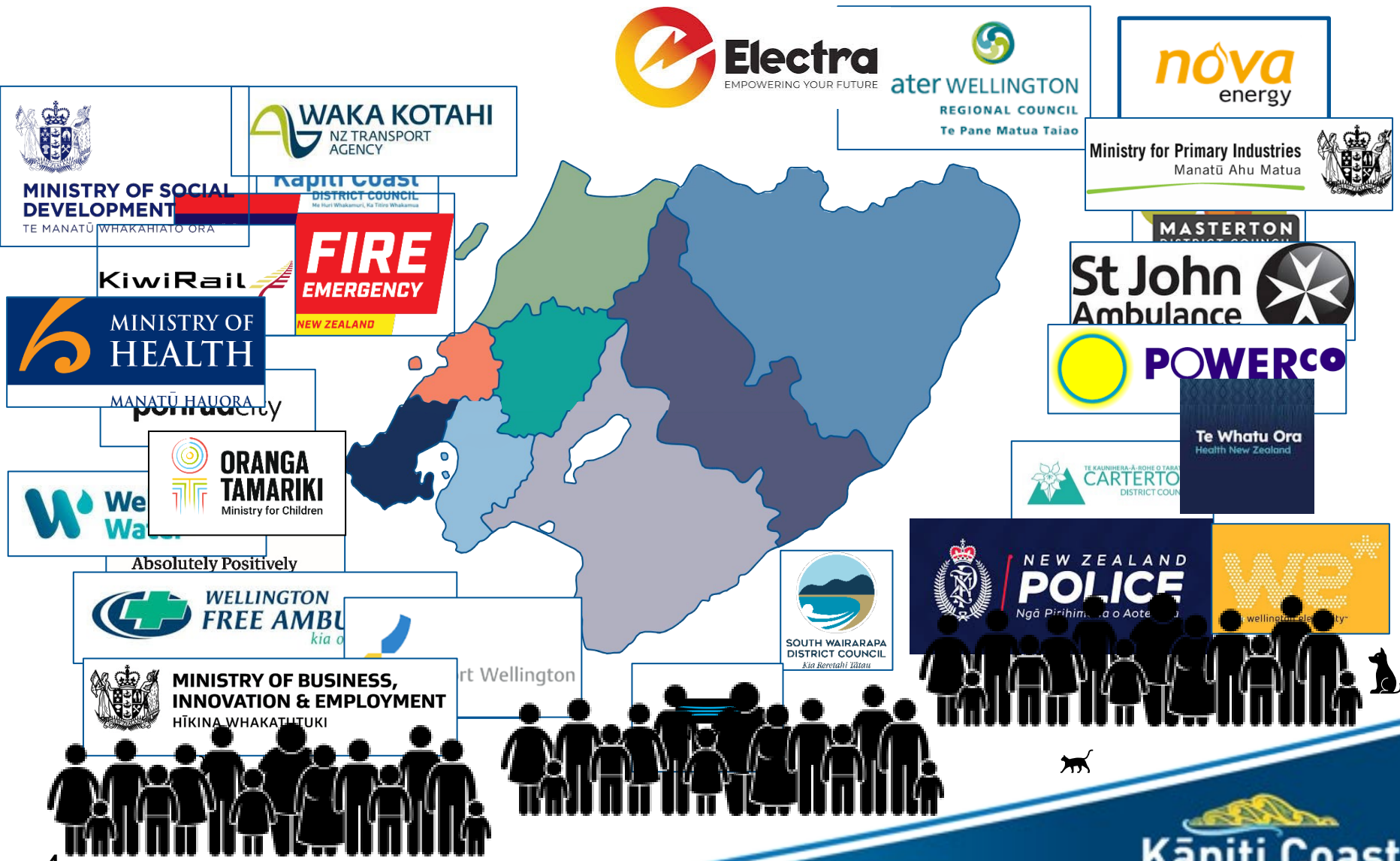
Emergency management is the managerial function charged with creating the framework within which communities reduce vulnerability to hazards and cope with disasters.

- International Association of Emergency Managers (IAEM)

# 4Rs Framework



# Who's Who in the EM World



# Group Governance Structure

## Joint Committee

Mayors of all Councils, Chair of the GWRC and Chairs of Te Runanga o Toa Rangatira and Te Āti Awa.

## Coordinating Executive Group (CEG)

CEs of Councils, Emergency Services (Police, Fire, Health & Ambulance), Lifelines Rep (Dep Chair of WeLG), Welfare Rep (Regional WCG), NEMA (Advisory)

## Local Government EM Collective

Specifically for Councils EMA's and WREMO.

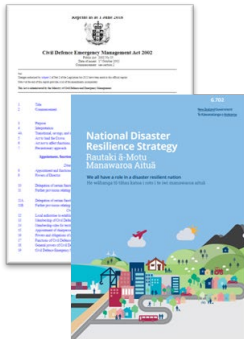
# Continuous Improvement & Assurance

## Better performance information is required for governance to be effective

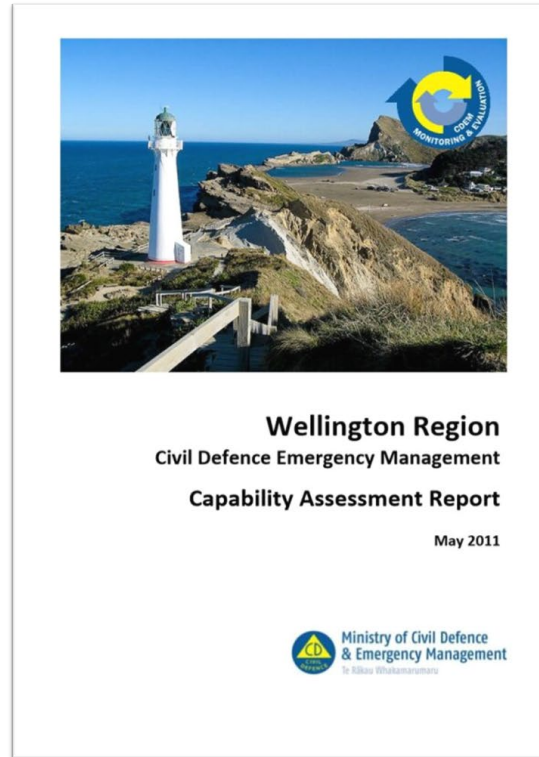
- 4.11 Governors and senior managers need regular and meaningful information about performance so they can direct and support improvements to the Council's emergency management function. They also need this information to know that the Council can respond effectively in an emergency.
- 4.12 The information that governors and senior managers need includes performance information on work programme delivery and measures of outputs, impact, and outcomes.
- 4.13 In our view, the lack of centralised collation and monitoring of actions against the Group Plan has made it more difficult for governance to be carried out effectively.



# How do we measure performance?



Annual Plans



4.11 Governors and senior managers need regular and meaningful information about performance so they can direct and support improvements to the Council's emergency management function. They also need this information to know that the Council can respond effectively in an emergency.

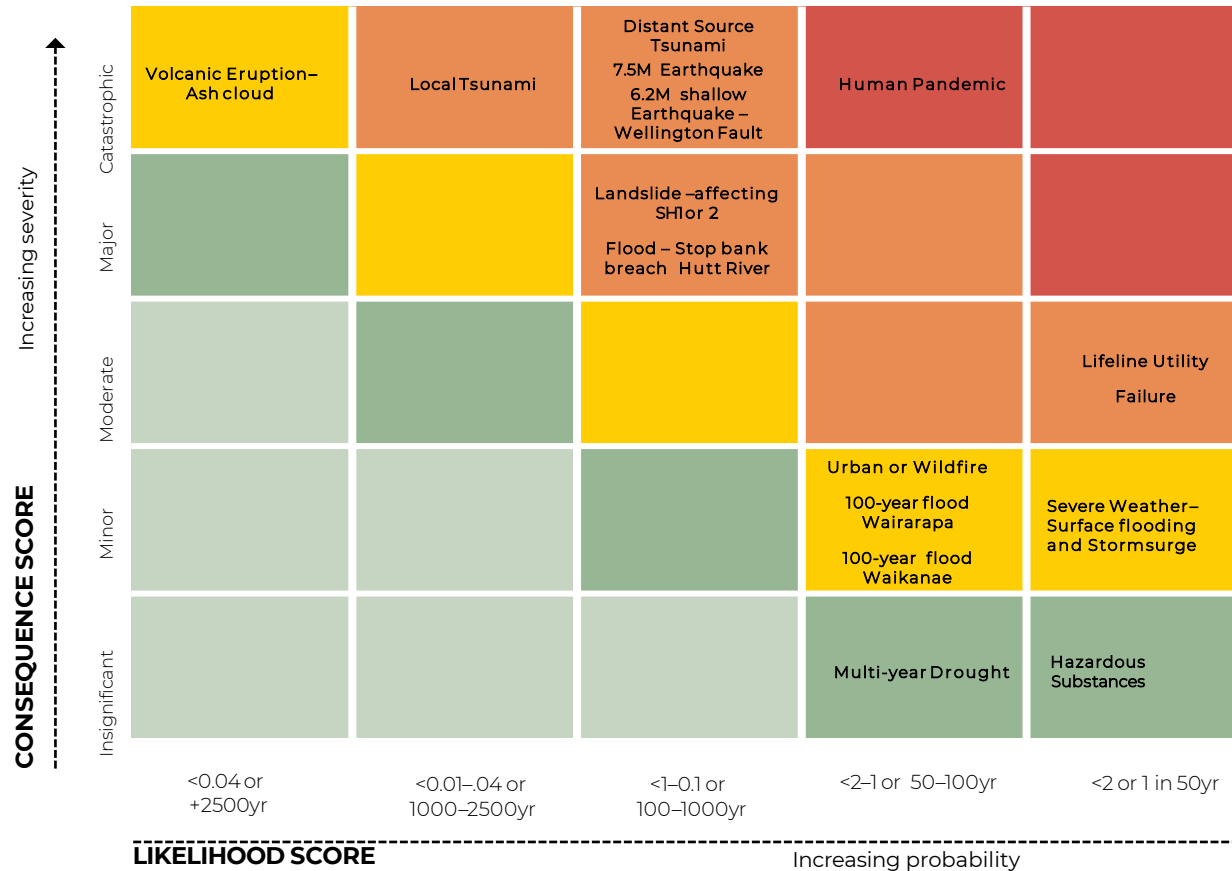




## Mock Up - National EM Capability Dashboard



# What is the risk from the hazards?



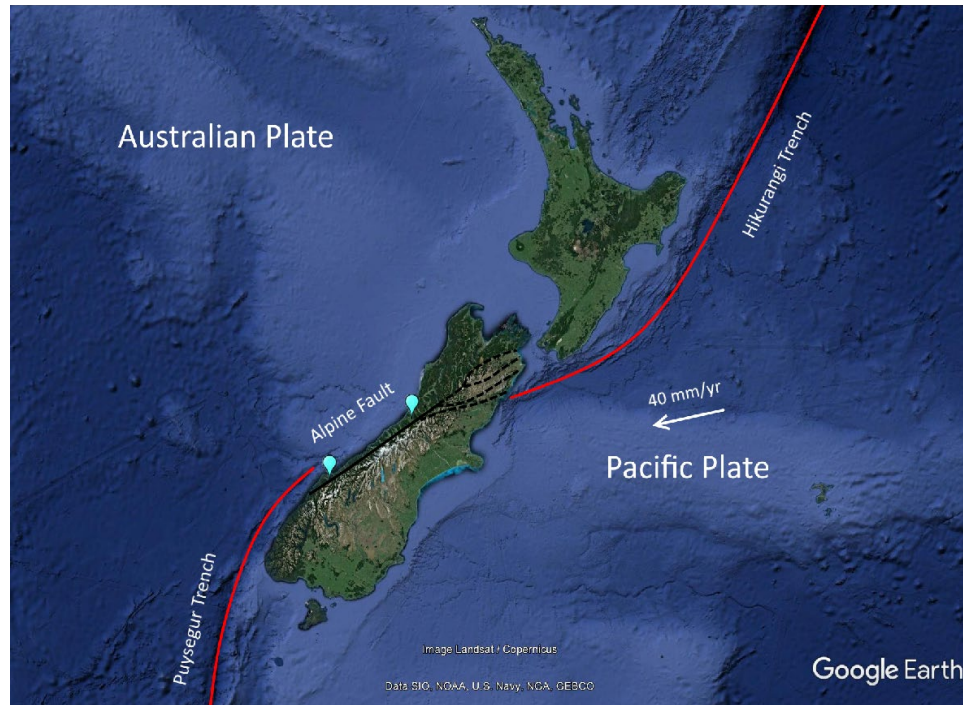
# Recent Trends: Increased risk and agility

In the Wellington Region we have seen:

- A 658% increase in the number of responses delivered between 2020 and 2021 in comparison to the 2016 to 2019 period.
- The most frequent responses have been to manage severe weather.
- Almost all of the hazards outlined in the Group Plan have occurred during this timeframe.
- Frequency (Average):
  - Every 182 days over the 2016 to 2019 period
  - Every 24 days throughout 2020 and 2021
- Increased expectations from community for better and faster information, in a various forms (which are constantly changing and evolving).

# Snapshot – Earthquake Scenario

“While we can’t predict earthquakes, scientific research indicates there is a 75% probability of an Alpine Fault earthquake occurring in the next 50 years, and there is a 4 out of 5 chance that it will be a magnitude 8+ event.”



“The southern Hikurangi Subduction Zone is one of the biggest sources of seismic and tsunami hazard for the Wellington Region.”

**IT'S OUR FAULT**  
NŌ MĀTOU TE HAPA

“There is a 1 in 4 chance of a magnitude 8 or greater earthquake in the next 50 years“



# Response Risks

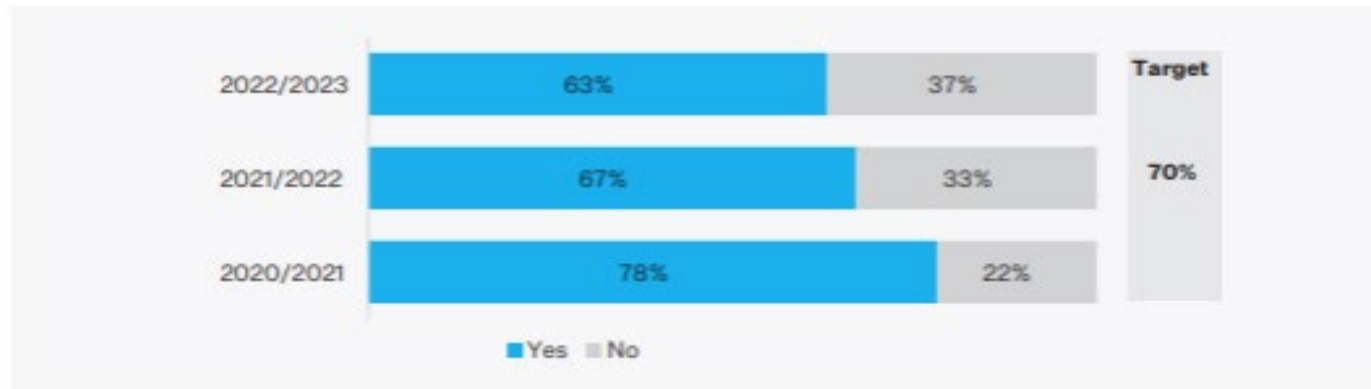
- Community Preparedness

Just under two-thirds (63 percent) of Kāpiti Coast residents stated that they have an emergency plan and kit – including food, water, and survival items – sufficient to last for seven days.

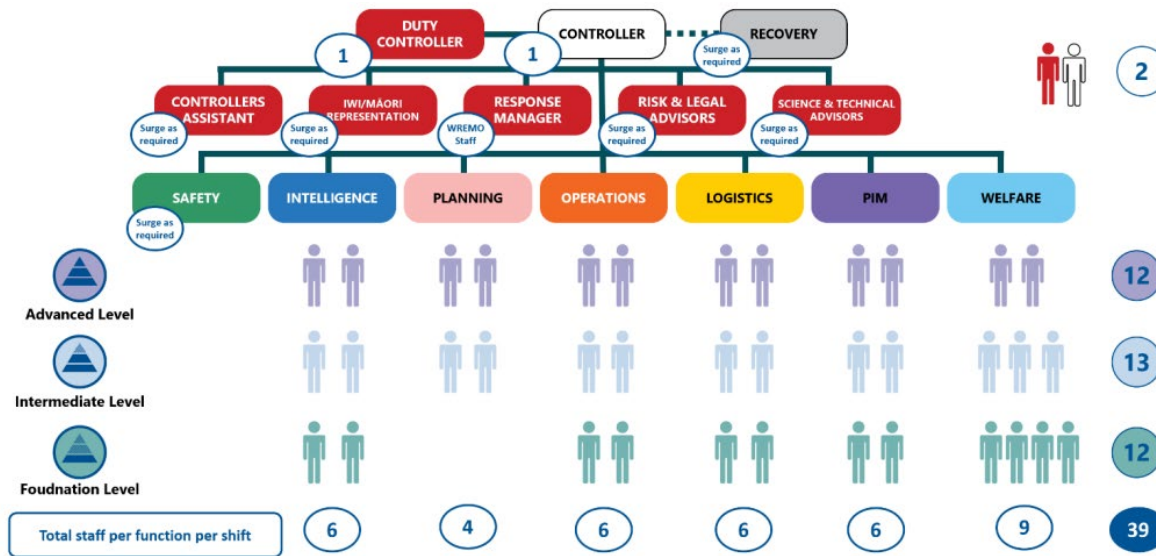
Levels of emergency preparedness decreased notably (decrease of 4 percent) since 2021/2022, preparedness levels remained just below the target of 70 percent.

Younger residents aged 18 to 29, and 30 to 39 were found to be less likely to be prepared for an emergency (43 and 49 percent respectively), compared to residents aged 65 or older (75 percent).

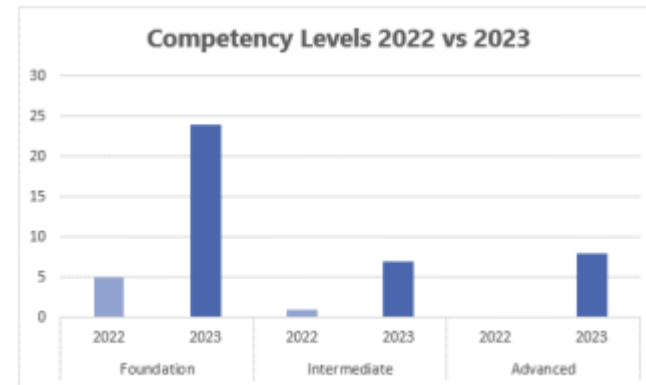
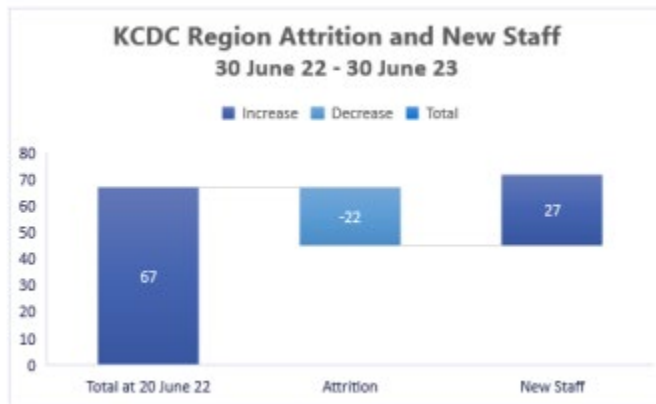
Figure 35. Emergency preparedness



- Emergency Management Workforce



Each council to ensure they have a minimum of 2 shifts at the above levels totalling 78 ECC or EOC staff per council. This will set the total Wellington CDEM Group people capacity level at 546.



# What have we been doing?

- ✓ Established an Emergency Management Advisor within KCDC
- ✓ Wai Ua Wai Ora Wai Inu: The Community Emergency Drinking Water Project Business Case
- ✓ Recruit and Train EM Workforce
- ✓ Reinvigoration of the Local Welfare Committee
- ✓ Emergency Services Coordination Committees (ESCCs) and Regional Inter-Agency Planning Committee (RIAPC)
- ✓ MOU's
  - ✓ Beach FM and Access Radio
  - ✓ Kāpiti Amateur Radio Society



# What have we been doing?

- ✓ **Community Engagement** (Jan 2023 – Jan 2024)
  - ✓ 95 x Community workshops
  - ✓ 55 x Community engagement meetings
  - ✓ 8 x Hub audits
  - ✓ 6 x WREMO stalls at large local community events
  - ✓ 5 x Community Response Practices (hub drills)
  - ✓ 1074 people spoken to directly about resilience and preparedness





# What are we doing now?

- Professionalisation of the EM Workforce
  - Capacity
  - Capability
  - Competence
  - Confidence
- Growing the EAC Capability
- Wellington Acute Water Shortage
- KCDC Radio Upgrade
- MOU Volunteer Kāpiti
- Community Engagement
  - Long Walk Home
  - Community Response Practices
  - Independent living resilience programme (retirement villages)
  - Community Response Planning



# What are we going to do?

- In-House EM growth as part of KCDC “Preparing for the Future”
- Professionalism of the EM Workforce Rolled Out
- May 24 CDEM Local Exercise
  - EAC Capability
  - Emergency Community Water Station
- Wai Ua Wai Ora Wai Inu: The Community Emergency Drinking Water Project Delivery
- Community Engagement
  - Opening of new Community Emergency Hub
  - Marae resilience partnership
  - BCP for small businesses and NGOs
  - Schools and Early Childhood Centres workshops
- Continuing to Build Readiness and Responding to Events



# Key Take Aways

- Pass Mark
- Professionalisation
- Plan and Prepare