

14 September 2015

Email: Julie.Lloyd@kapiticoast.govt.nz

The District Licensing Agency
Private Bag 60601
PARAPARAUMU 5254

Attention: Julie Lloyd

E-Mail Address: jarrod.true@harkness.co.nz
Direct Dial: 0800 426 254

Please refer to: Jarrod True
Account No: 464501-237

Confirmation of TAB Board Venue Consent - TAB Board Venue Located at Kapiti Lights

1. We act for the New Zealand Racing Board.
2. Council's TAB Board Venue policy permits TAB Board Venues to operate in the Kapiti Coast, but limits the number of TAB Board Venues to two.
3. When setting the cap, we understand council considered the Paraparaumu TAB located at Kapiti Lights, Amohia Street, Paraparaumu to be a formal TAB Board Venue.
4. The Paraparaumu TAB wishes to expand its footprint slightly to include part of the premises currently operating as The Black Stag Bar, Amohia Street, Paraparaumu.
5. In order to confirm council's consent to the TAB Board Venue operating at Kapiti Lights, Amohia Street, Paraparaumu, can you please email us a letter granting a TAB Board Venue consent under council's TAB Board Venue Gambling Policy 2011 for "the Paraparaumu TAB, Kapiti Lights, Amohia Street, Paraparaumu".
6. We would be grateful if the confirmation could be provided by Friday, 18 September 2015.

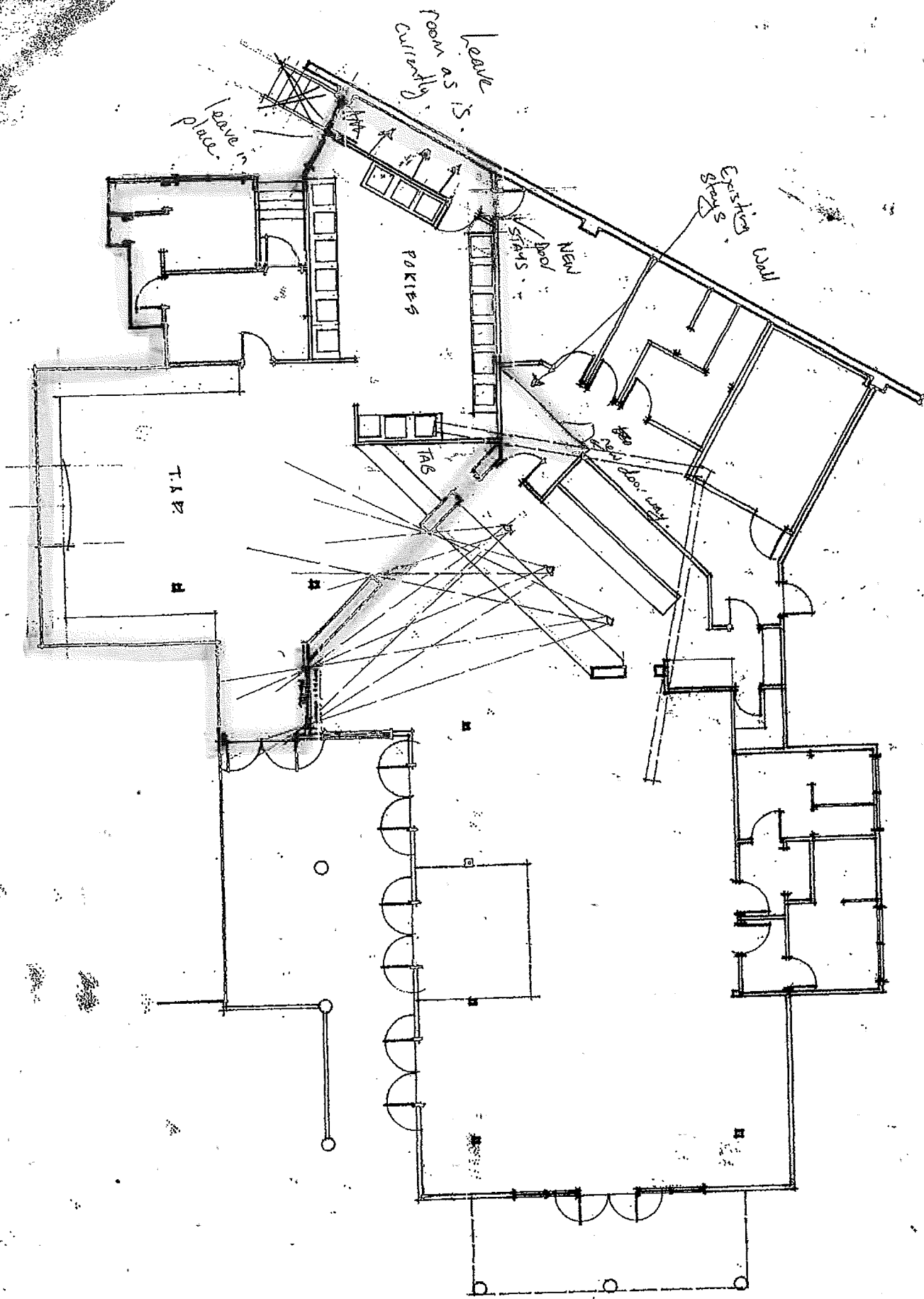
HARKNESS HENRY

Per:



JARROD TRUE
Partner

This letter is sent by email only. Please retain a copy for your records.



REVISED PLAN FOR PERUSA
1:100

Council Policy Title:	KĀPITI COAST DISTRICT COUNCIL TAB BOARD VENUE GAMBLING POLICY 2011
Policy Number:	POL: 1.1.1
Active Date:	9 June 2011

1. Policy Validation

The Kāpiti Coast District TAB Board Venue Gambling Policy 2011 was approved at a meeting of the Kāpiti Coast District Council held on 9 June 2011 after completion of a public consultation process.

This Policy has been made pursuant to section 65D of the Racing Act 2003. It has also been reviewed in accordance with section 65E of the Racing Act 2003.

2. Interpretation

In this Policy, unless the context requires otherwise:

Gambling Harm	means the adverse impact problem gamblers have on themselves, their family and friends, and wider society. For instance problems gamblers suffer from increased rates of bankruptcy, arrest, imprisonment, unemployment, divorce and poor physical and mental health. There is also evidence to suggest that problem gamblers have higher rates of suicide.
Problem Gambling	means a pattern of gambling behaviour that disrupts and damages a person's life, their friendships, family relationships and job interests.
The Council	means the Kāpiti Coast District Council or any committee, community board, or an enforcement officer authorised to exercise the authority of the Council.
TAB Board Venue	means a stand-alone venue that is owned or leased by the New Zealand Racing Board and is: <ul style="list-style-type: none"> i. used mainly for racing or sport betting; or ii. a racecourse

3. Objectives of the Policy

- 3.1 To support the purpose and intent of the Racing Act 2003.
- 3.2 To provide for the continued availability of TAB Board Venue gambling within the Kapiti Coast District in accordance with the purpose and intent of the Racing Act 2003.

-
- 3.3 To encourage responsible gambling practices and attitudes in TAB Board Venues.

4. Scope of the Policy

- 4.1 This Policy covers stand-alone TAB Board Venues, which are owned or leased by the New Zealand Racing Board. Council consent is not required under current legislation to establish a TAB facility in a bar, hotel or club. If a TAB Board Venue wishes to host gaming machines a separate application must be made under Council's Class 4 Gambling Policy and the TAB Board Venue must also meet the additional criteria set out in that policy.

5. Rules Regarding TAB Board Venues

- 5.1 This Policy maintains the existing cap on stand-alone TAB Board Venues at **2**. No new stand-alone TAB Board Venues will be approved in any part of the Kapiti Coast District if it means this cap will be exceeded.
- 5.2 Where an existing TAB Board Venue is ceasing to operate, the Council may, at its own discretion, allow the relocation of existing venue conditions to another location(s) that meets the criteria of the policy.

6. Next Policy Review

- 9.1 In accordance with section 65E of the Racing Act 2003 this policy will be reviewed by the Council in 2015.