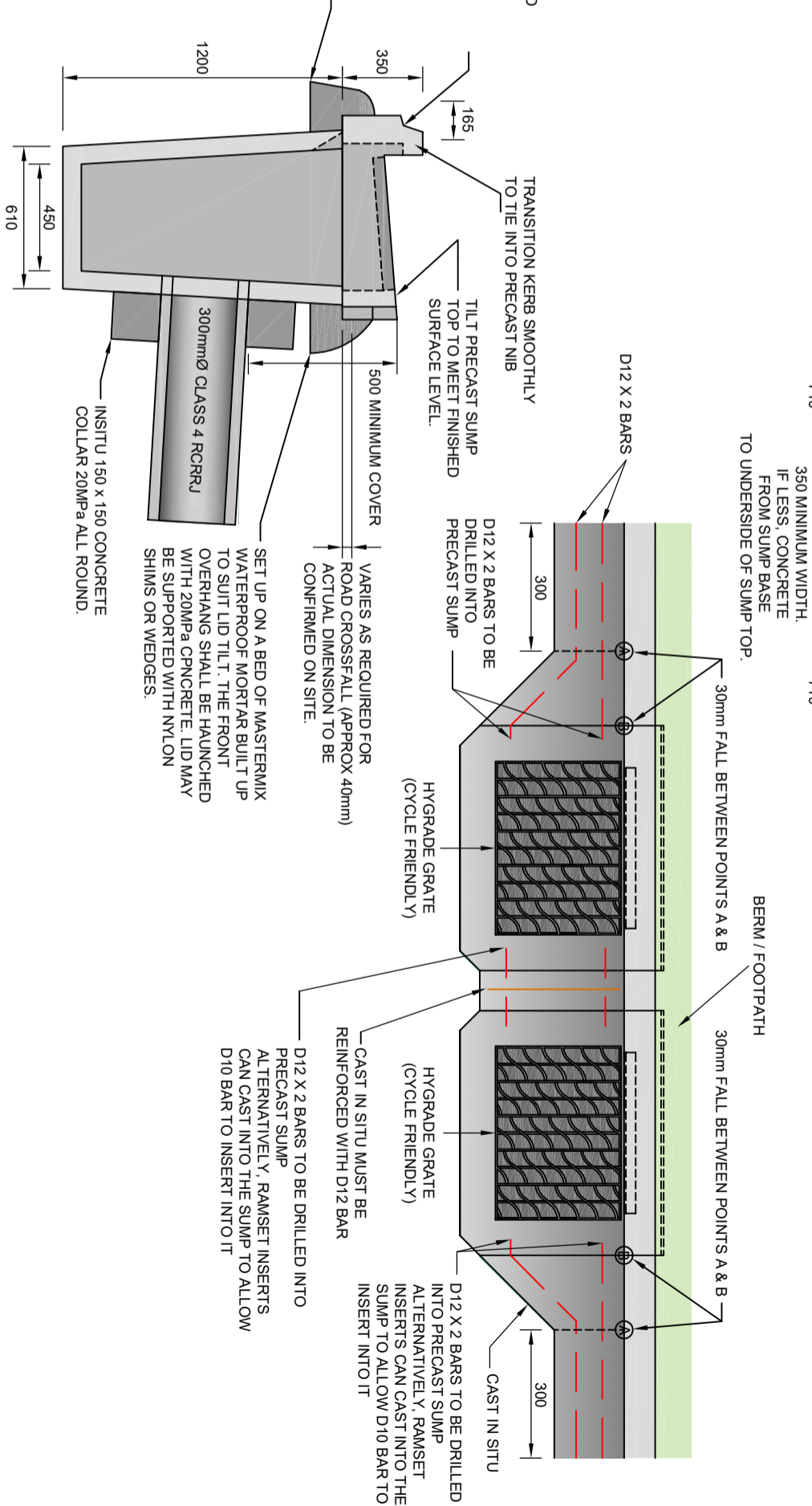


SUMP BLOCKS TO BE INSTALLED WITH EITHER NO GAP OR A MINIMUM GAP OF 110mm. WHERE THERE IS NO GAP A FLEXIBLE EPOXY MORTAR MUST BE USED TO SEAL THEM TOGETHER.



**NOTE:**

1. ALL CONCRETE PIPES MUST BE CUT AS PER MANUFACTURERS RECOMMENDATIONS.
2. CONCRETE PIPE FACES TO BE WIREBRUSHED AND EPOXIED.
3. SUMP DEPTH 1.2m. HAUNCH WITH 20MPa
4. DO NOT BOLT DOWN GRATES FOR CLEANING PURPOSES. CONCRETE 10mm MIN.
5. 2x D12 BARS IN CONCRETE APRON AROUND GRATE.
6. LITTER TRAPS TO BE INSTALLED IN SHOPPING AND CATCHMENT AREAS.
7. ENVIRO PODS TO BE INSTALLED WITH SOAKPITS.
8. ALL SUMP LEADS CLASS 4 CONCRETE
9. IF PVC SNI6 PIPE IS USED FOR STORMWATER, INSTALL 2x FLEXIBLE JOINTS WITHIN 750mm OF MANHOLES.
10. ALL SUMPS AND SUMP LEADS MUST BE INCLUDED IN RAMM ASBUILT DATA.
11. MINIMUM GAP BETWEEN PRECAST SUMP TOPS 110mm UNLESS INSTALLED WITHOUT GAP.
12. IF PRECAST SUMP TOPS INSTALLED WITH NO GAP, CONCRETE ABOVE AND BELOW CONNECTING PIPE, TO SUMP BASE.
13. BACK GRATE TO BE INSTALLED SUBJECT TO ENGINEER'S APPROVAL.
14. PLEASE REFER TO DRAWING KCDC-SW-005 FOR CAST IN SITU



**STANDARD DETAILS**

**STANDARD DOUBLE SUMPS**

Drawn	Designed
T. GE	J. SAXTON
Approved	Revision Date
B. MURRAY	APRIL 2018
Scale	Drawing No.
NOT TO SCALE	KCDC-SW-002
	Revision
	R3