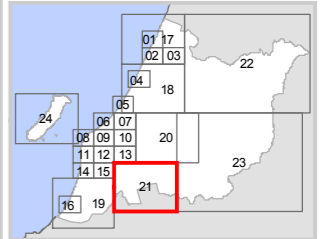


**Map 21C**  
**Natural Hazards**



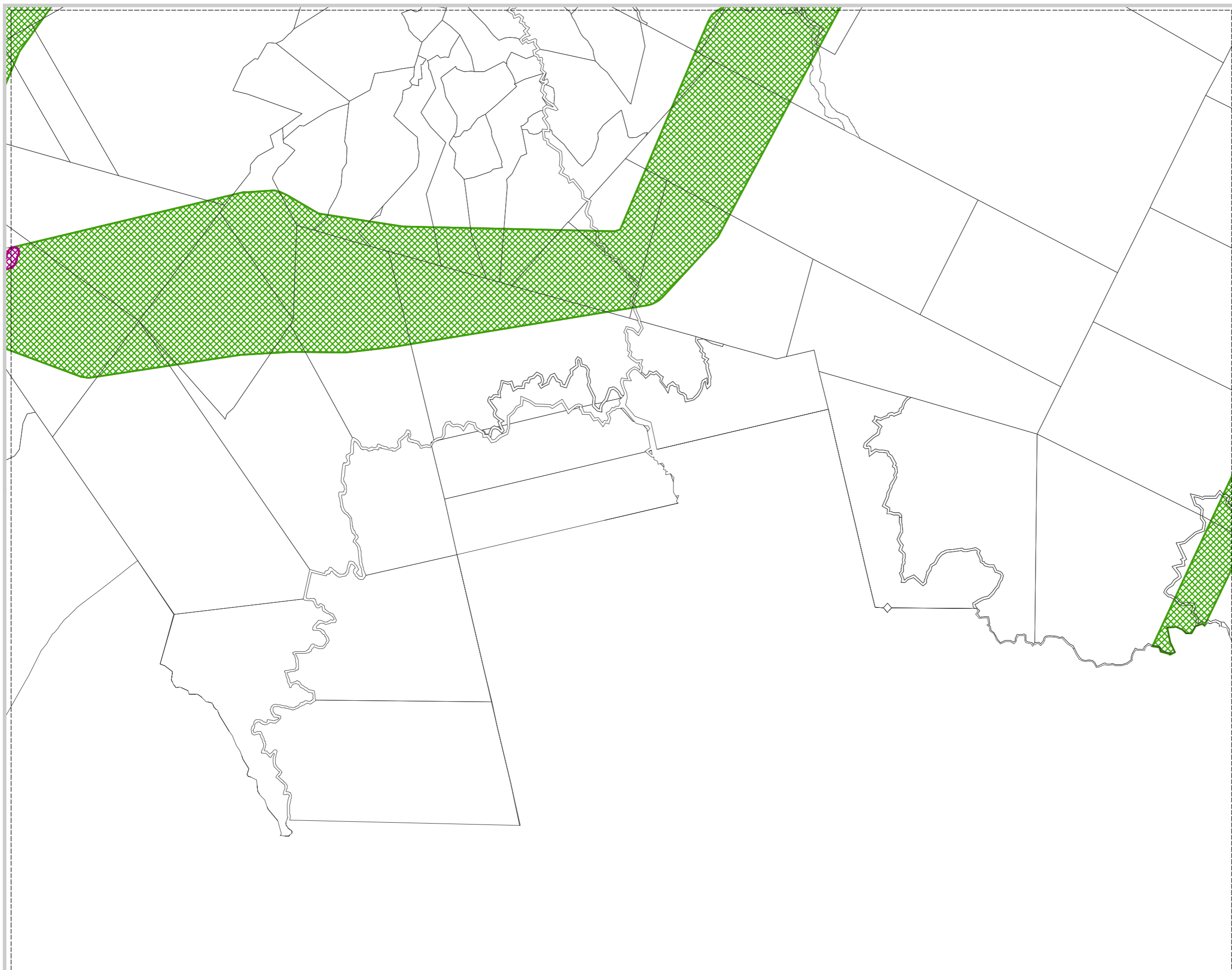
**LEGEND**

**FLOOD**

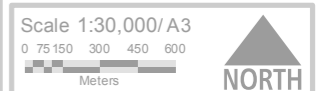
- River Corridor
- Stream Corridor
- Overflow Path
- Residual Overflow Path
- Fill Control Area
- Flood Storage Area
- Ponding Area
- Residual Ponding Area
- Shallow Surface Flow

**FAULT AVOIDANCE AREAS**

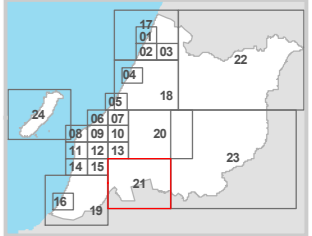
- Well Defined
- Well Defined Extension
- Distributed
- Uncertain Constrained
- Uncertain Poorly Constrained














Decisions Version - Nov. 2017

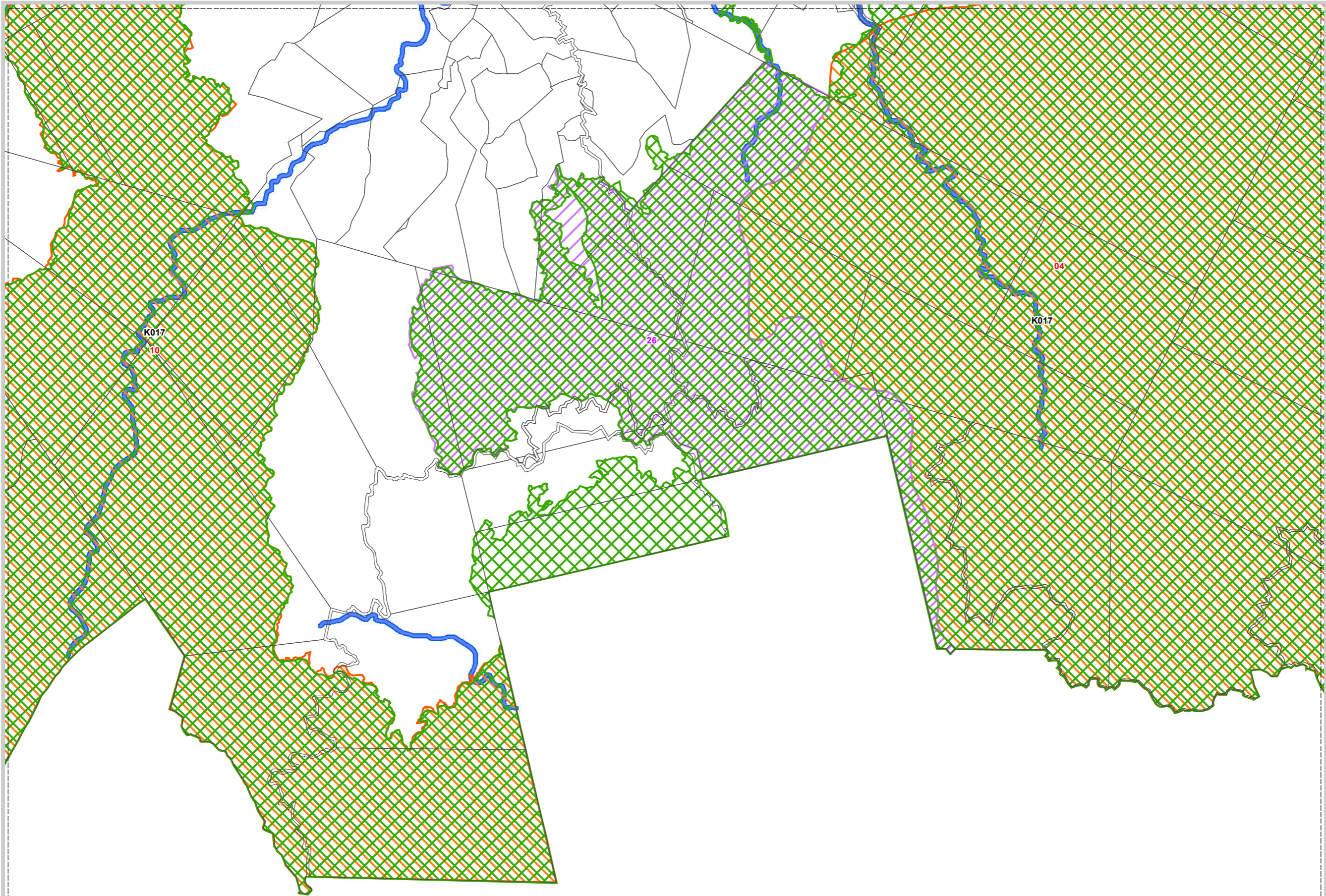


Last Amended  
Notification Date: 29 November 2012



**LEGEND**

-  Key Indigenous Trees
-  Geological
-  Geological Area
-  Extent of the Coastal Dominance Area
-  Ecological Sites
-  Special Amenity Landscapes
-  Outstanding Natural Landscapes and Features
-  Area of Outstanding Natural Character
-  Areas of High Natural Character
-  Coastal Dominance
-  Rivers Streams and Drains



Decisions Version - Nov 2017

Scale 1:30,000 / A3  
 0 75 150 300 450 600  
 Meters

**NORTH**

Last Amended  
 Notification Date: 29 November 2012