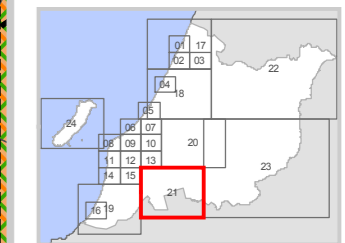
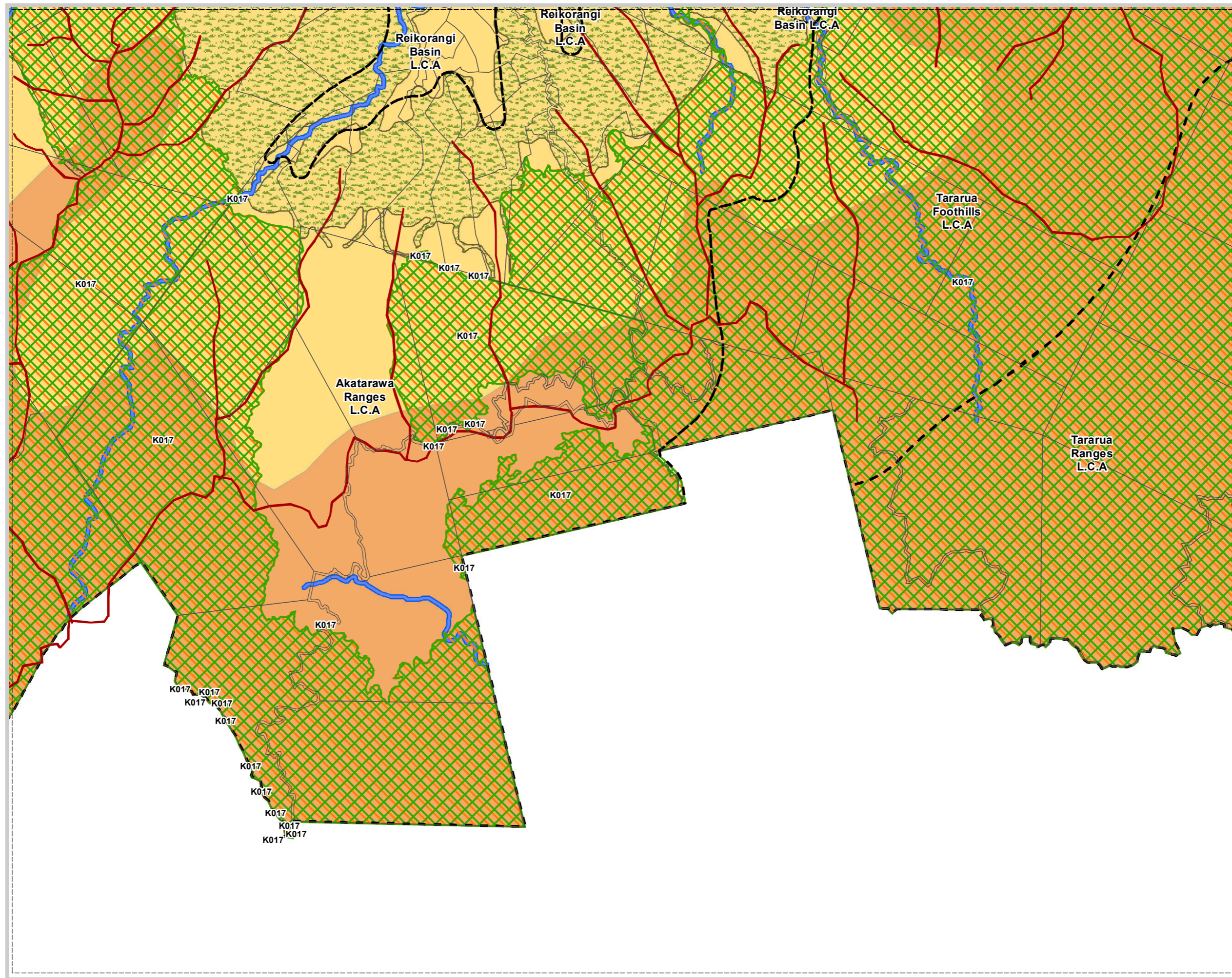


# Map 21D notified

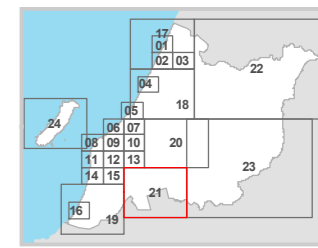


## LEGEND

- ★ Lookout Points
  - ▲ Geological
  - ▭ Geological Area
  - ▬ Dominant Ridgelines and Dominant Dunes
  - ▭ Landscape Character Areas
  - ▭ Extent of the Coastal Environment
  - ▭ Coastal Environment
  - ▭ Ecological Sites
  - ▭ Significant Amenity Landscapes
  - ▭ Outstanding Natural Landscapes
  - ▭ Areas of High Natural Character
  - ▬ Rivers Streams and Drains
  - ▭ Priority areas for restoration
- EcoDomains**
- ▭ Hill Country
  - ▭ Lowland Hills
  - ▭ Duneland
  - ▭ Lowland Alluvial Terrace
  - ▭ Salt Zone

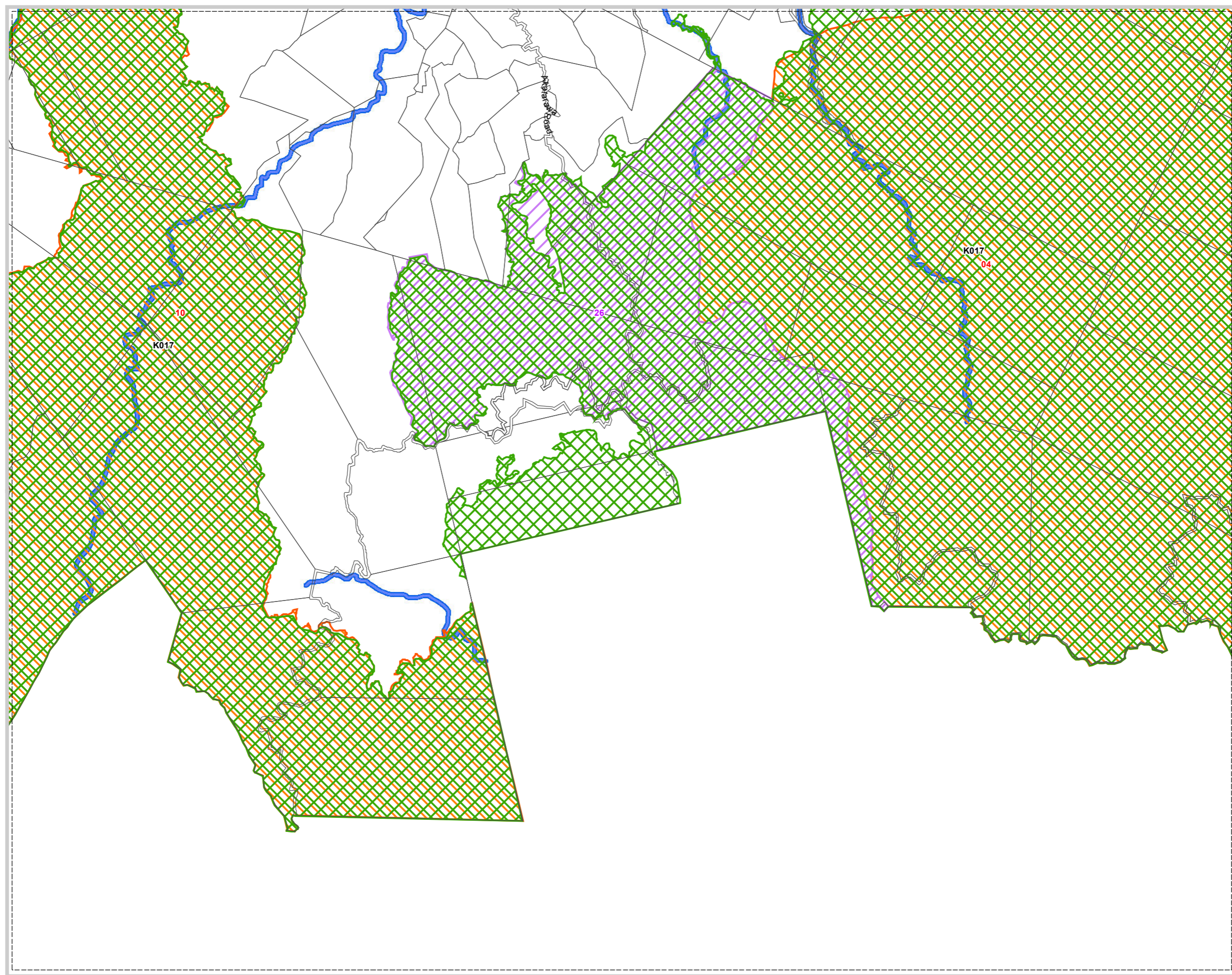


# Map 21D decision




## LEGEND

- Key Indigenous Trees
- Geological
- Geological Area
- Extent of the Coastal Dominance Area
- Ecological Sites
- Special Amenity Landscapes
- Outstanding Natural Landscapes and Features
- Area of Outstanding Natural Character
- Areas of High Natural Character
- Coastal Dominance
- Rivers Streams and Drains



### Decision Version

Scale 1:32,000 / A3  
0 80 160 320 480 640  
Meters



NORTH

Last Amended  
Notification Date: 29 November 2012