



# Title Plan - LT 454080

---

**Survey Number** LT 454080  
**Surveyor Reference** 1062.17 - WNL  
**Surveyor** Paul William Turner  
**Survey Firm** Landlink Ltd  
**Surveyor Declaration** I Paul William Turner, being a licensed cadastral surveyor, certify that:  
(a) this dataset provided by me and its related survey are accurate, correct and in accordance with the Cadastral Survey Act 2002 and the Rules for Cadastral Survey 2010, and  
(b) the survey was undertaken by me or under my personal direction.  
Declared on 17 Jul 2012 09:57 AM

---

## Survey Details

**Dataset Description** LOTS 2, 3, 5, 101, 107 & 108 BEING A SUBDIVISION OF PT NGARARA WEST A79, PT LOT 1 DP 4829, LOT 2 DP 31774, LOTS 9-12 DP 17551 AND LOT 2 DP 76132

**Status** Approved as to Survey

**Land District** Wellington **Survey Class** Class A

**Submitted Date** 17/07/2012 **Survey Approval Date** 17/07/2012

**Deposit Date**

---

## Territorial Authorities

Kapiti Coast District

---

## Comprised In

CT WN44C/442  
CT WN47D/331  
CT WN8D/896  
CT 531983  
CT 531984  
CT 531985  
CT 531986  
CT 531987

---

## Created Parcels

Parcels	Parcel Intent	Area	CT Reference
Lot 2 Deposited Plan 454080	Fee Simple Title	6.9962 Ha	582325
Lot 3 Deposited Plan 454080	Fee Simple Title	2.7652 Ha	582326
Lot 5 Deposited Plan 454080	Fee Simple Title	3.2000 Ha	582327
Lot 101 Deposited Plan 454080	Vesting on Deposit for Road	1.5177 Ha	
Lot 107 Deposited Plan 454080	Fee Simple Title	1.9502 Ha	582328
Lot 108 Deposited Plan 454080	Fee Simple Title	53.5178 Ha	582329
Area A Deposited Plan 454080	Easement		

---



# Title Plan - LT 454080

---

## Created Parcels

Parcels	Parcel Intent	Area	CT Reference
Area B Deposited Plan 454080	Easement		
Area C Deposited Plan 454080	Easement		
Area D Deposited Plan 454080	Easement		
Area E Deposited Plan 454080	Easement		
Area F Deposited Plan 454080	Easement		
Area G Deposited Plan 454080	Easement		
Area H Deposited Plan 454080	Land Covenant		
Area I Deposited Plan 454080	Land Covenant		
Area J Deposited Plan 454080	Land Covenant		
Area K Deposited Plan 454080	Land Covenant		
Area L Deposited Plan 454080	Land Covenant		
Area M Deposited Plan 454080	Easement		
Area N Deposited Plan 454080	Land Covenant		
Area O Deposited Plan 454080	Land Covenant		
Area P Deposited Plan 454080	Land Covenant		
Area Q Deposited Plan 454080	Land Covenant		
Area R Deposited Plan 454080	Land Covenant		
Area S Deposited Plan 454080	Land Covenant		
Area T Deposited Plan 454080	Land Covenant		
Area X Deposited Plan 454080	Easement		
Area V Deposited Plan 454080	Land Covenant		
Area W Deposited Plan 454080	Easement		
Area Y Deposited Plan 454080	Land Covenant		
<b>Total Area</b>		69.9471 Ha	

Land Registration District

WELLINGTON

Plan Number

DP 454080

Territorial Authority (the Council)

Kapiti Coast District Council

**Memorandum of Easements in Gross**

Purpose	Shown	Servient Tenement	Grantee
Right to Drain Sewage	A	Lot 3	Kapiti Coast District Council
	B, C, D, E, F	Lot 108	
Right to Convey Water	F		
Stormwater Drainage	G	Lot 3	
	L, M	Lot 108	
Right to Convey Electricity	F	Lot 108	Electra Limited

**Memorandum of Easements**

Purpose	Shown	Servient Tenement	Dominant Tenement
Right to Drain Sewage	W	Lot 108	Lot 5

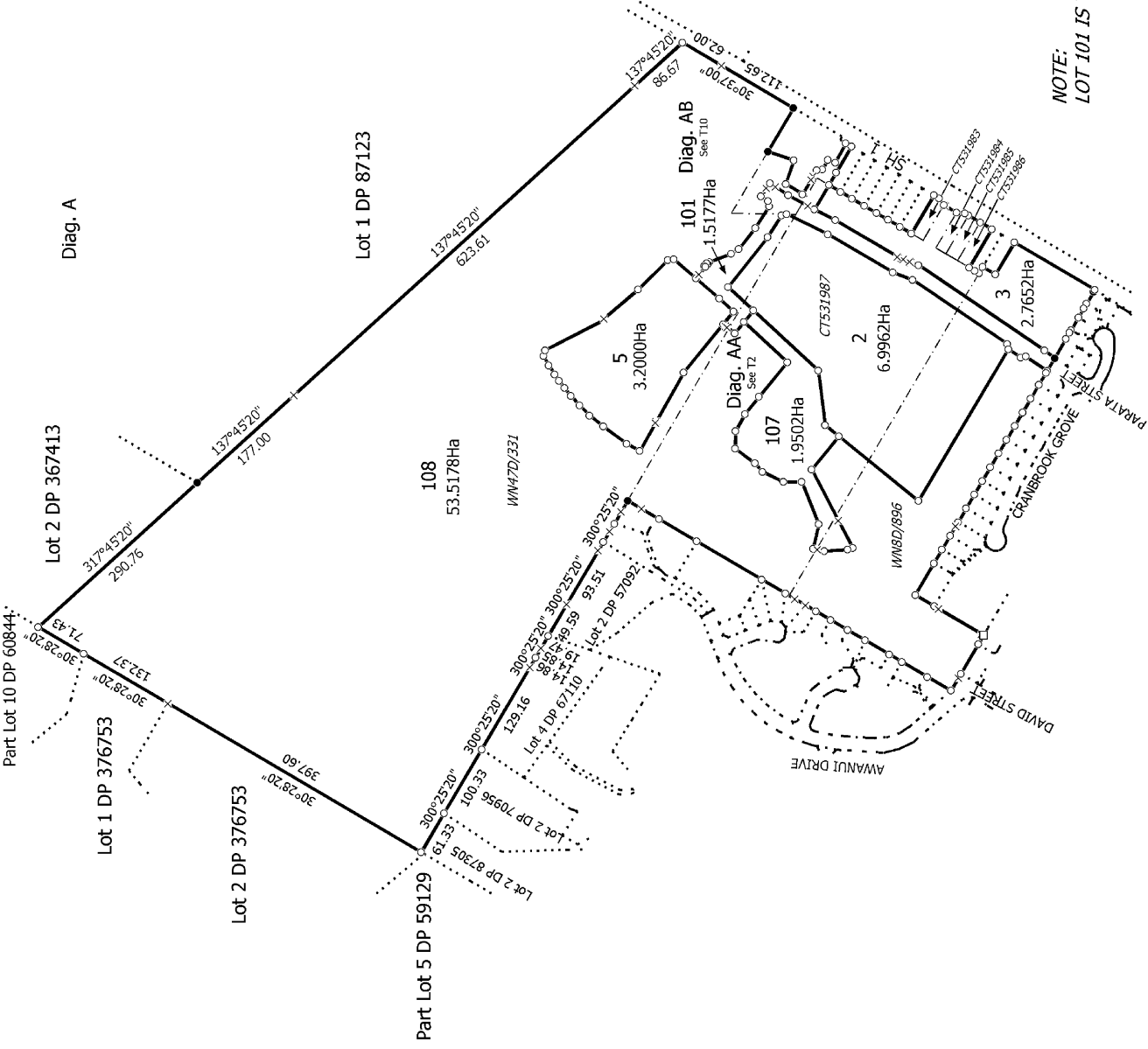
**Schedule of Existing Easements in Gross**

Purpose/Interest	Shown	Servient Tenement	Document
Water Supply and Sewage Drainage	X	Lot 108	B066540.8

**LAND COVENANTS**

**Areas D, H, I, J, K and N are subject to Land Covenants  
(Building Exclusion Zones)**

**Areas B, F, H, O, P, Q, R, S, T, V, W, X, Y are subject to Land Covenants  
(Note: Area V relates to whole of Lot 3)**



NOTE:  
 LOT 101 IS TO VEST AS ROAD IN THE KAPITI COAST DISTRICT COUNCIL

Land District: Wellington	LOTS 2, 3, 5, 101, 107 & 108 BEING A SUBDIVISION OF PT NGARARA WEST A79, PT LOT 1 DP 4829, LOT 2 DP 31774, LOTS 9-12 DP 17551 AND LOT 2 DP 76132	T 1/10
Digitally Generated Plan Generated on: 17/07/2012 11:27am; Page 4 of 13	Surveyor: Paul William Turner Firm: Landlink Ltd	Title Plan LT 454080 Approved on: 17/07/2012



Diag. AA

108  
53.5178Ha

WN47D/331

5  
3.2000Ha

Diag. AAL  
See T9

Diag. AAJ  
See T4

Diag. AAG  
See T5

107  
1.9502Ha

Diag. AAH  
See T3

Diag. AAM  
See T4

Diag. AAN  
See T7

2  
6.9962Ha

Diag. AAF  
See T6

Diag. AAE  
See T8

Diag. AAB  
See T6

Diag. AAC  
See T7

Diag. AAD  
See T6

Diag. AAE  
See T8

Diag. AAF  
See T6

Diag. AAG  
See T5

Diag. AAH  
See T3

Diag. AAI  
See T2

Diag. AAJ  
See T4

Diag. AAK  
See T3

Diag. AAL  
See T8

Diag. AAM  
See T4

Diag. AAN  
See T7

Diag. AAO  
See T6

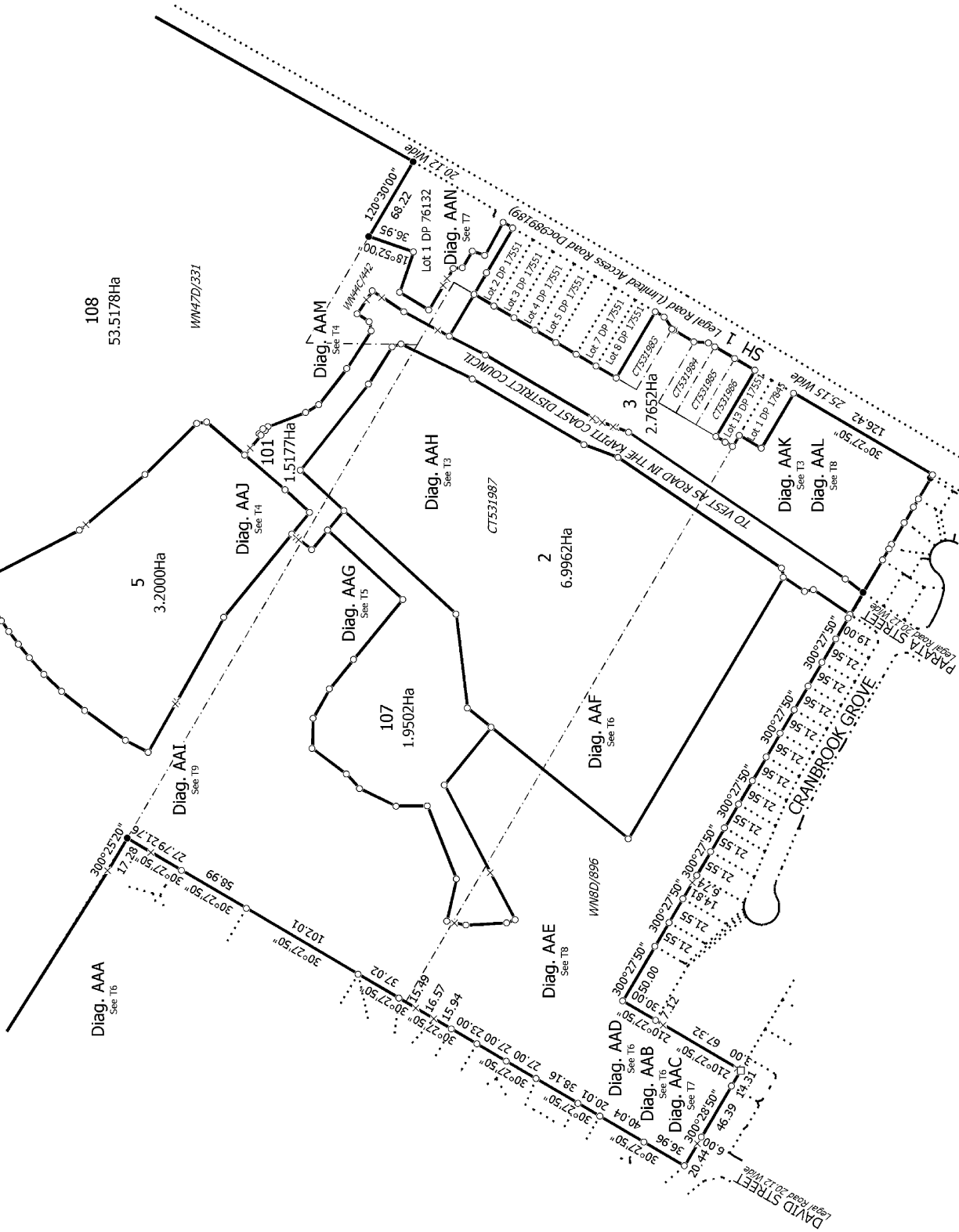
Diag. AAP  
See T5

Diag. AAQ  
See T4

Diag. AAR  
See T3

Diag. AAS  
See T2

Diag. AAT  
See T1

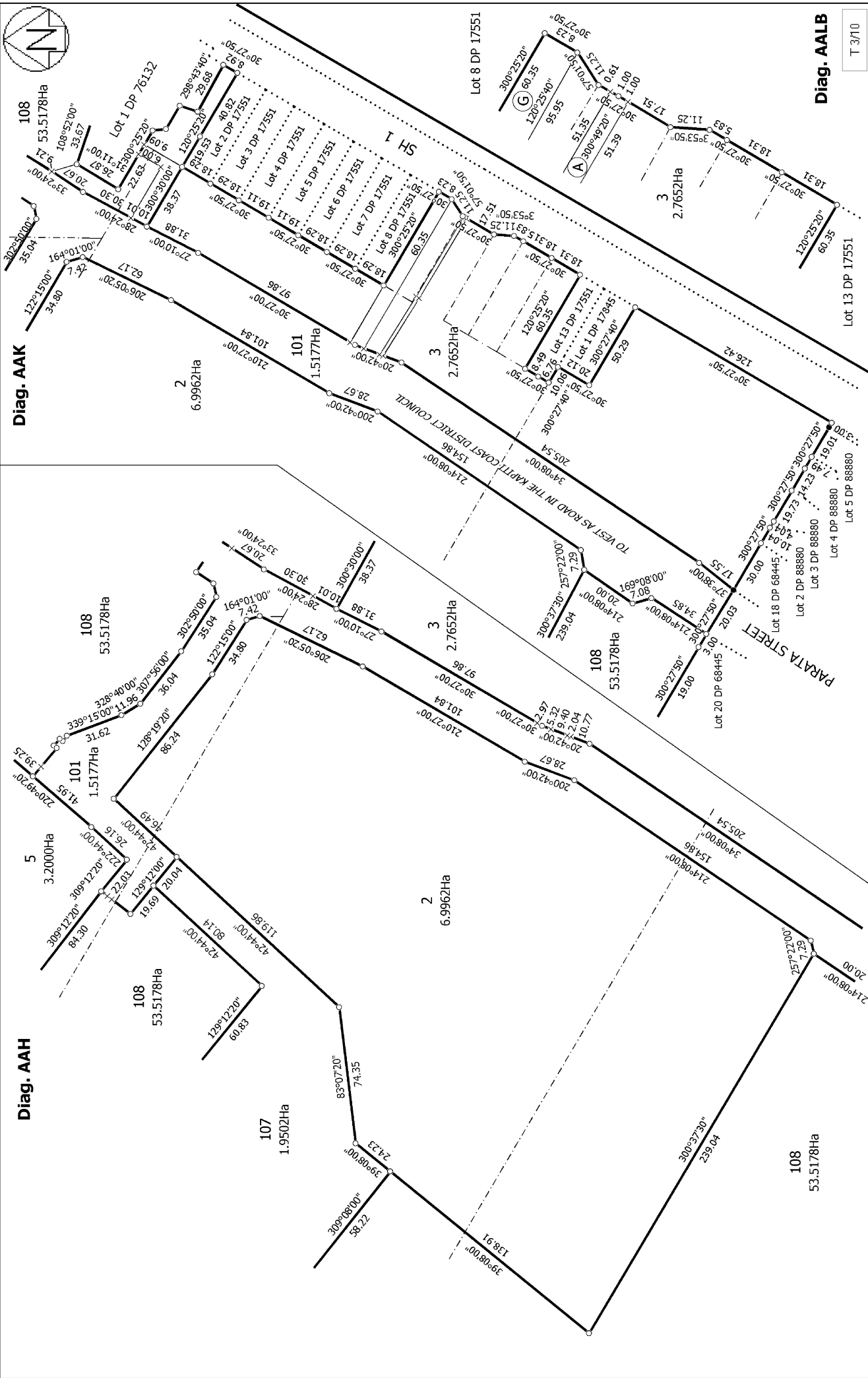


T 2/10

LOTS 2, 3, 5, 101, 107 & 108 BEING A SUBDIVISION OF PT NGARARA WEST  
A79, PT LOT 1 DP 4829, LOT 2 DP 31774, LOTS 9-12 DP 17551 AND LOT 2 DP  
76132

Surveyor: Paul William Turner  
Firm: Landlink Ltd

Title Plan  
LT 454080  
Approved on: 17/07/2012



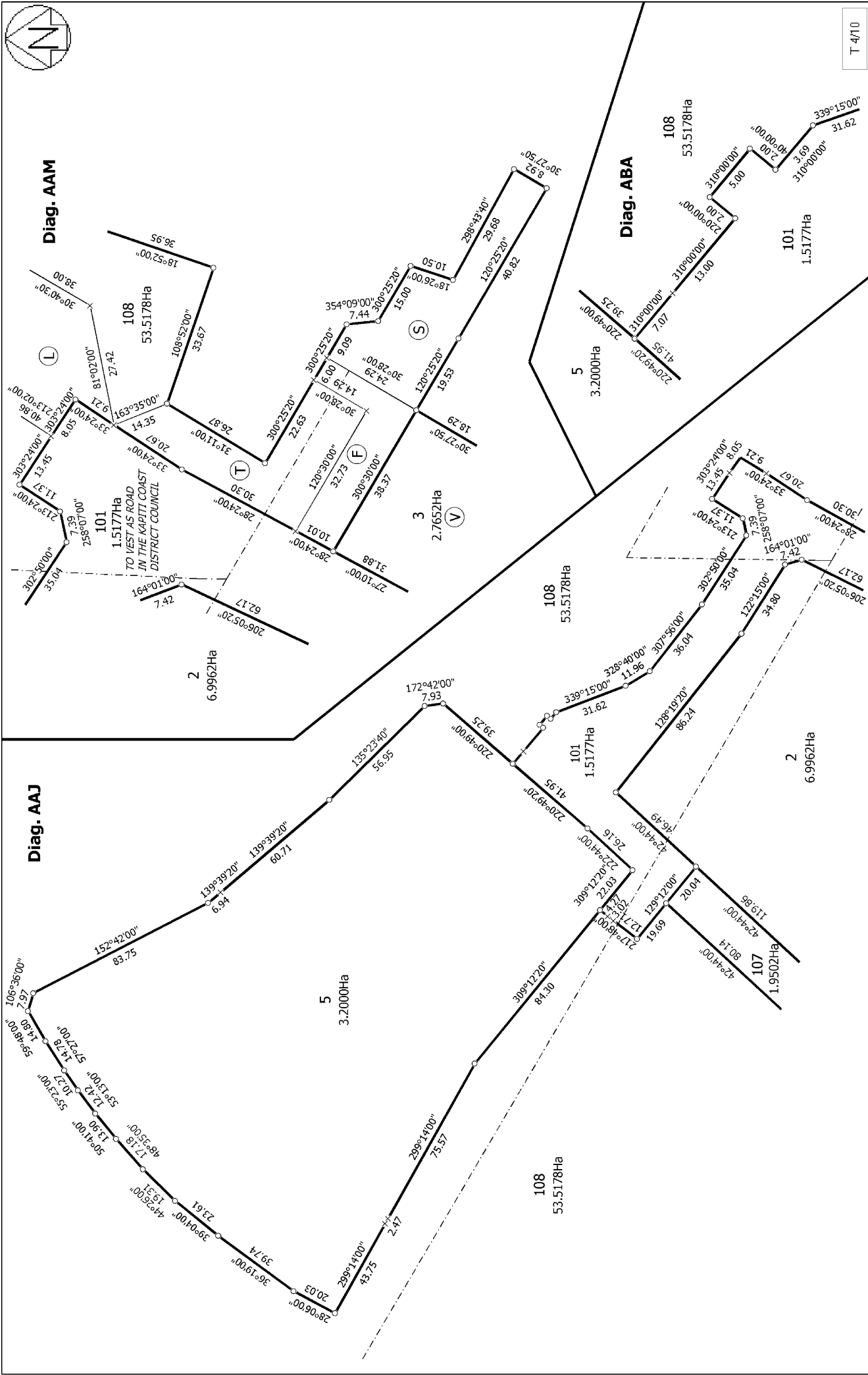
Diag. AALB

T 3/10

Title Plan  
 LT 454080  
 Approved on: 17/07/2012

Surveyor: Paul William Turner  
 Firm: Landlink Ltd

LOTS 2, 3, 5, 101, 107 & 108 BEING A SUBDIVISION OF PT NGARARA WEST  
 A79, PT LOT 1 DP 4829, LOT 2 DP 31774, LOTS 9-12 DP 17551 AND LOT 2 DP  
 76132



T 4/10

**Title Plan**  
 LT 454080  
 Approved on: 17/07/2012

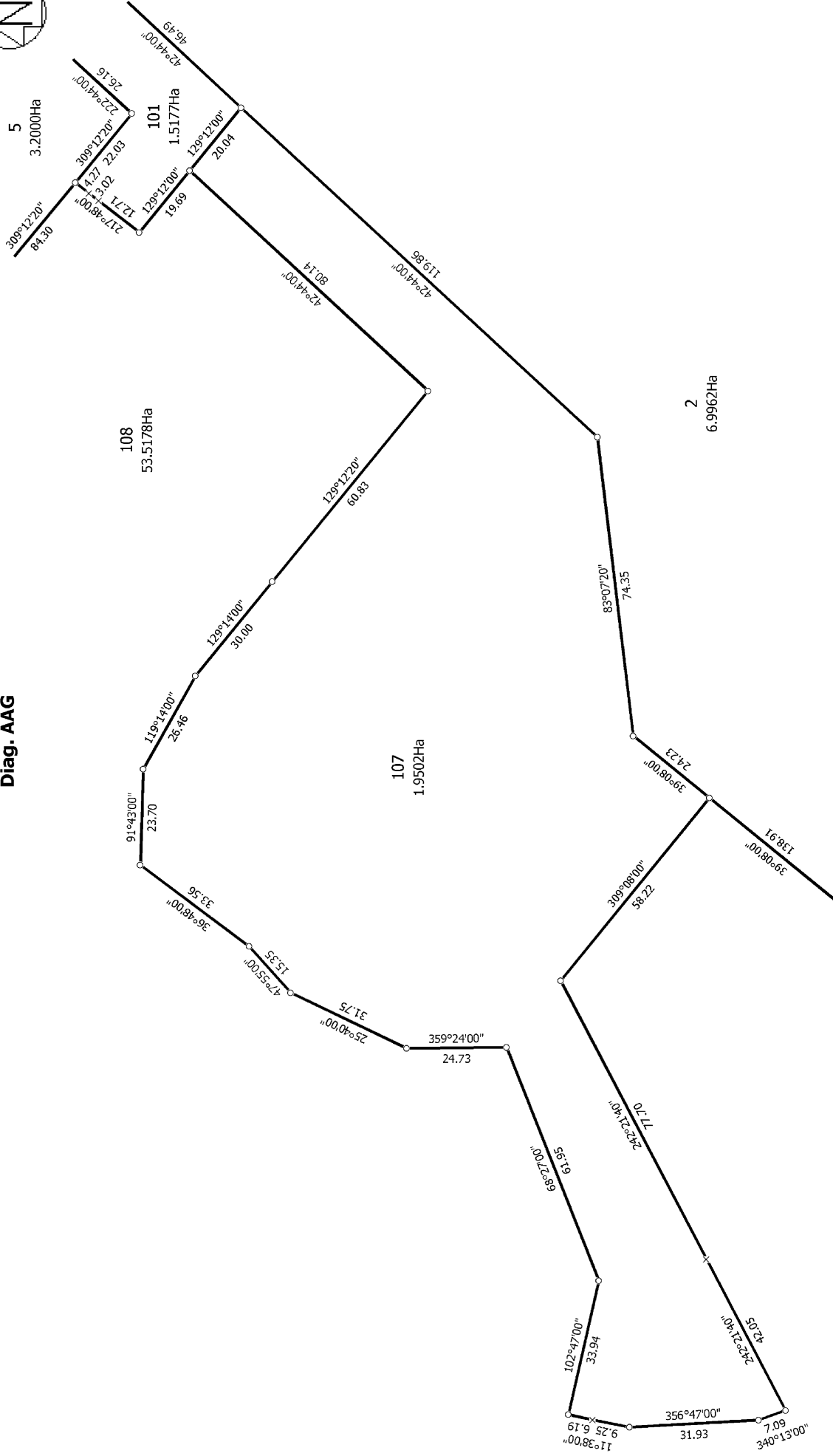
Surveyor: Paul William Turner  
 Firm: Landlink Ltd

**LOTS 2, 3, 5, 101, 107 & 108 BEING A SUBDIVISION OF PT NGARARA WEST  
 A79, PT LOT 1 DP 4829, LOT 2 DP 31774, LOTS 9-12 DP 17551 AND LOT 2 DP  
 76132**

Land District: Wellington  
 Digitally Generated Plan  
 Generated on: 17/07/2012 11:27am Page 7 of 13



Diag. AAG



T 5/10

LOTS 2, 3, 5, 101, 107 & 108 BEING A SUBDIVISION OF PT NGARARA WEST  
 A79, PT LOT 1 DP 4829, LOT 2 DP 31774, LOTS 9-12 DP 17551 AND LOT 2 DP  
 76132

Surveyor: Paul William Turner  
 Firm: Landlink Ltd

Title Plan  
 LT 454080  
 Approved on: 17/07/2012





Diag. AAF

108  
53.5178Ha

Diag. BA

108  
53.5178Ha

108  
53.5178Ha

Diag. AAB

Diag. AAA

Diag. AAD

108  
53.5178Ha

Lot 59 DP 68444

Lot 8 DP 322352

Lot 11 DP 322352

Lot 8 DP 322352

PARATA STREET

DAVID STREET

AWANUI DRIVE

MAIN ROAD (SH 1)

T 6/10

Title Plan

LT 454080

Approved on: 17/07/2012

Surveyor: Paul William Turner

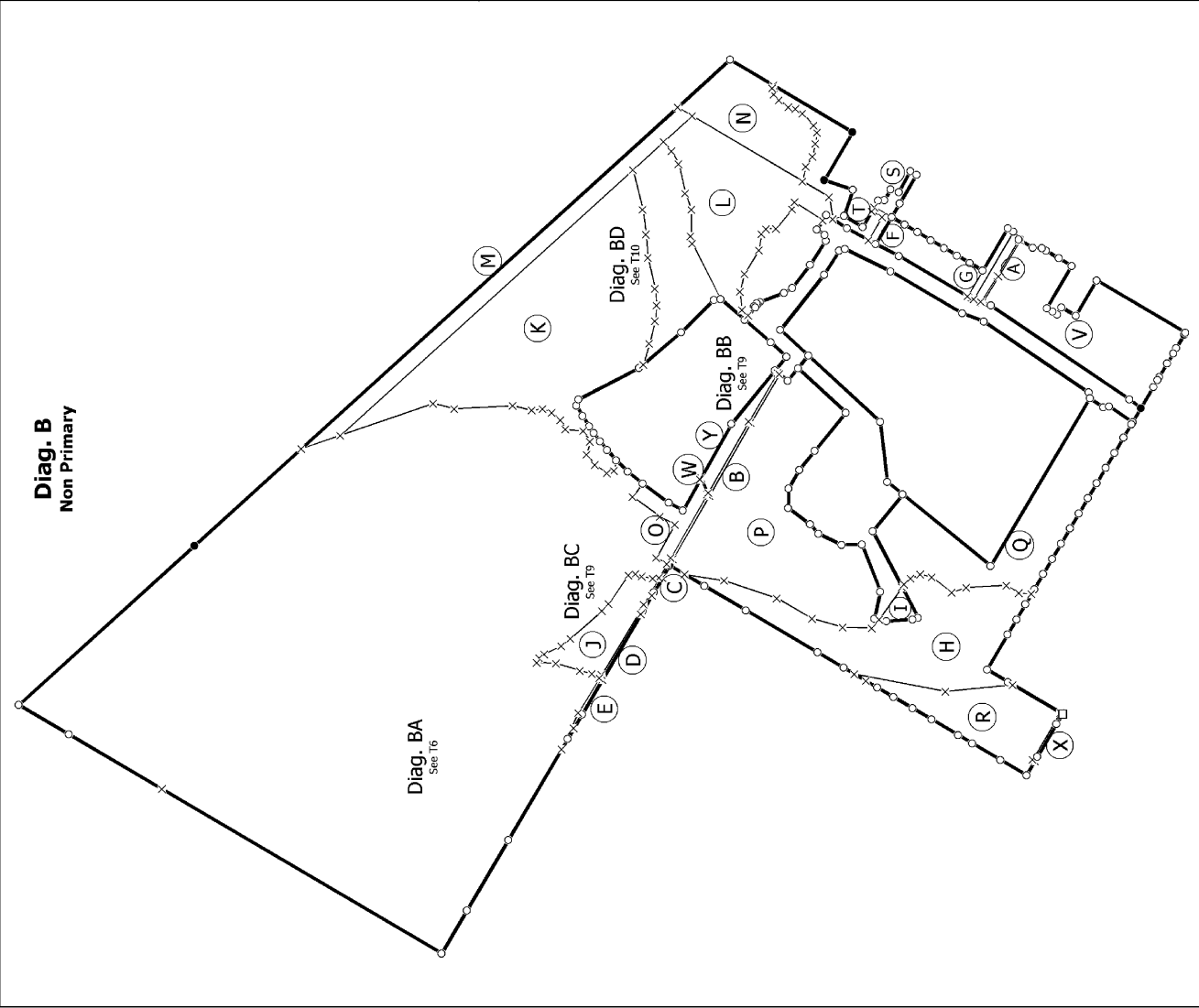
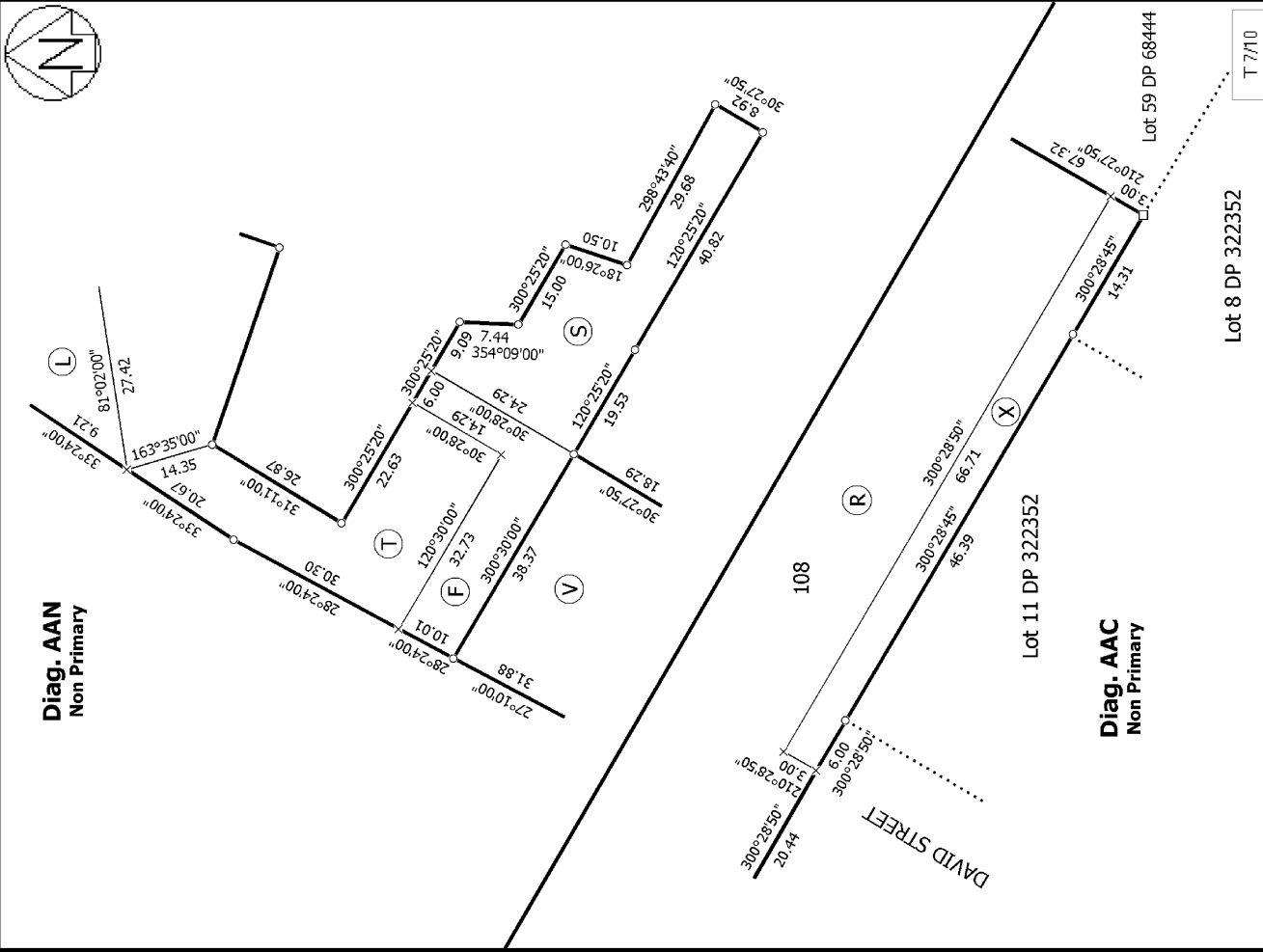
Firm: Landlink Ltd

LOTS 2, 3, 5, 101, 107 & 108 BEING A SUBDIVISION OF PT NGARARA WEST  
A79, PT LOT 1 DP 4829, LOT 2 DP 31774, LOTS 9-12 DP 17551 AND LOT 2 DP  
76132

Land District: Wellington

Digitally Generated Plan

Generated on: 17/07/2012 11:27am Page 9 of 13



**Diag. AAN**  
Non Primary

**Diag. B**  
Non Primary

**Diag. AAC**  
Non Primary

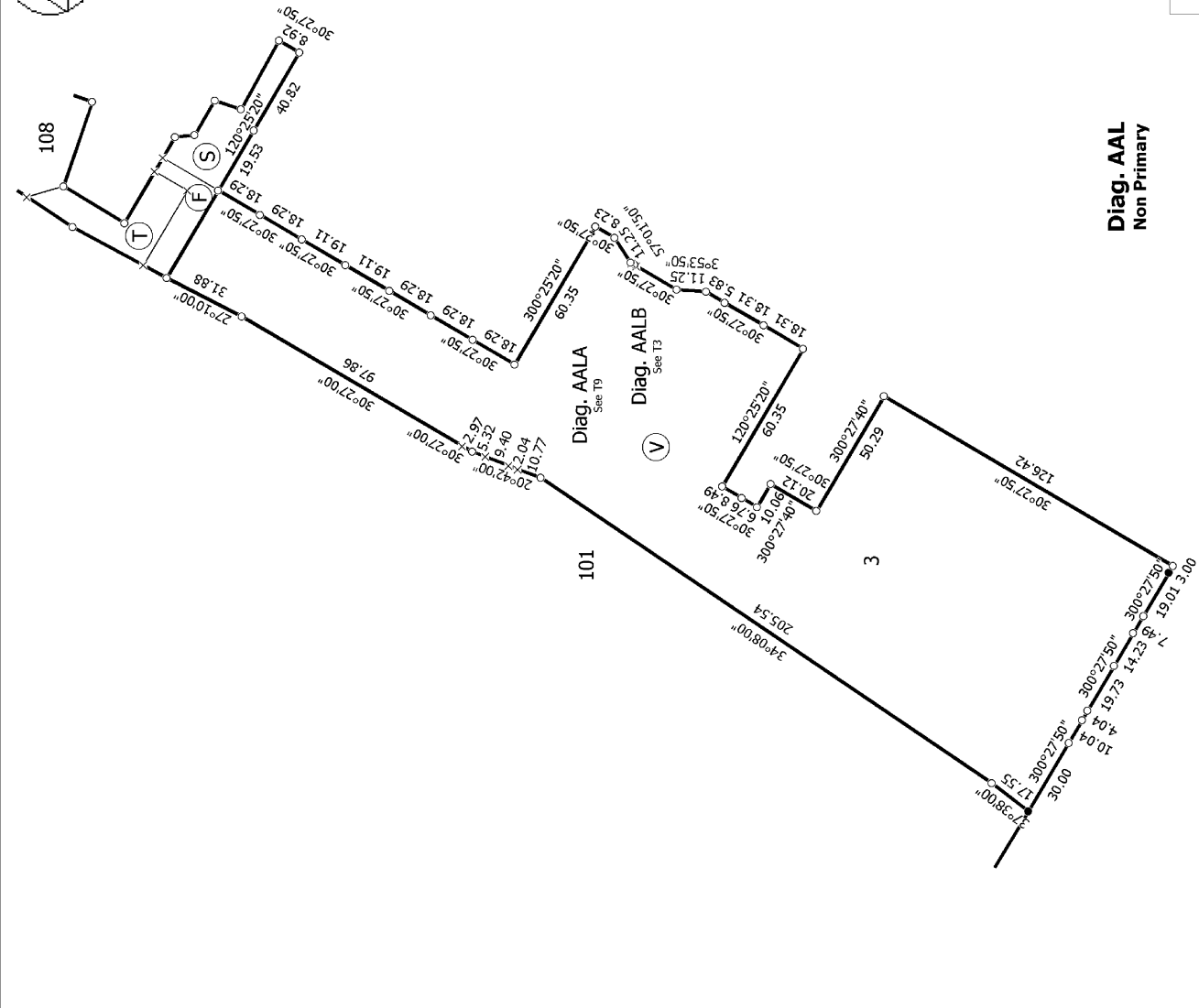
Lot 8 DP 322352

T 7/10

LOTS 2, 3, 5, 101, 107 & 108 BEING A SUBDIVISION OF PT NGARARA WEST  
A79, PT LOT 1 DP 4829, LOT 2 DP 31774, LOTS 9-12 DP 17551 AND LOT 2 DP  
76132

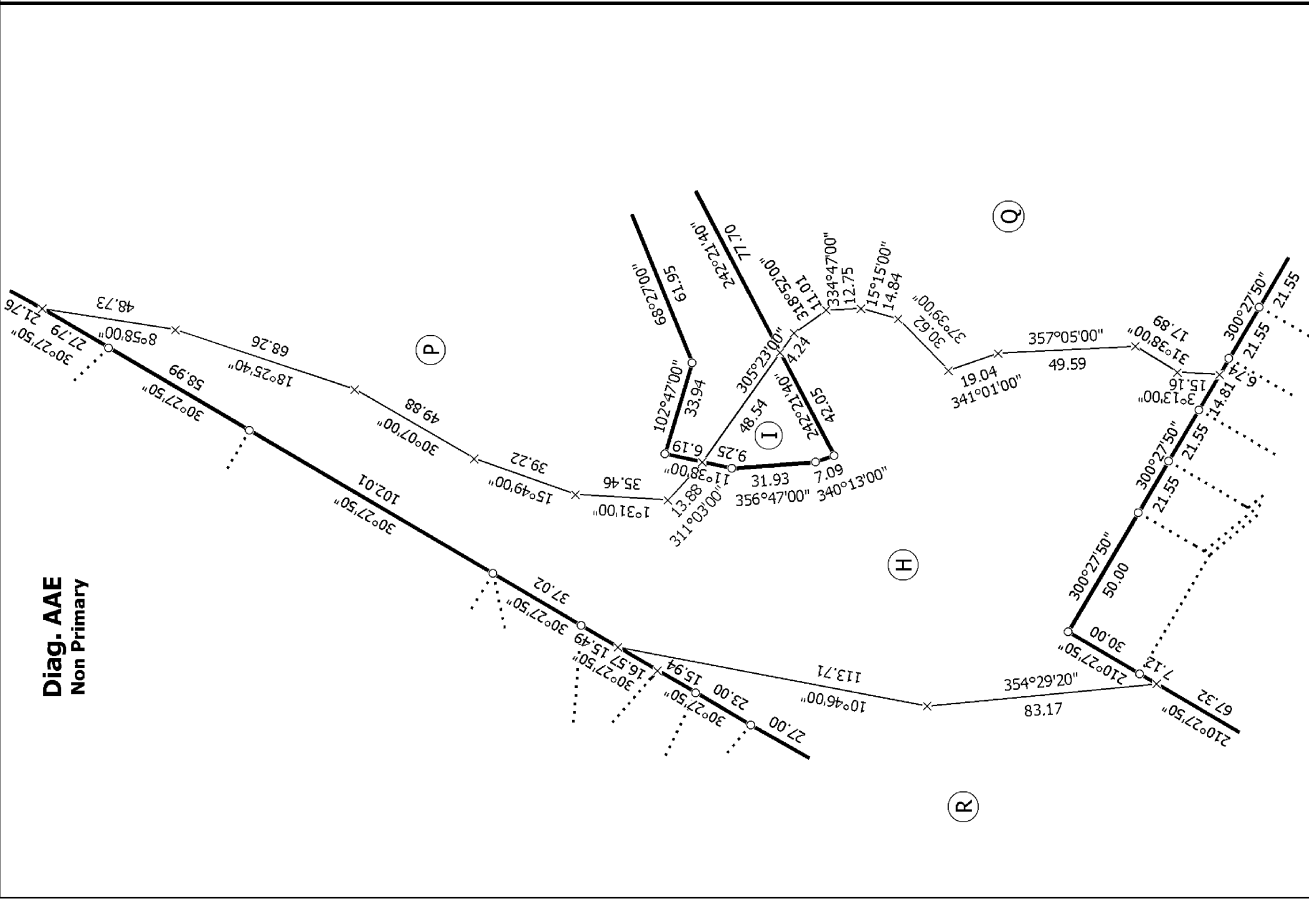
Title Plan  
LT 454080  
Approved on: 17/07/2012

Surveyor: Paul William Turner  
Firm: Landlink Ltd



**Diag. AAL**  
Non Primary

T 8/10



**Diag. AAE**  
Non Primary

<p>Land District: Wellington</p> <p>Digitally Generated Plan</p> <p>Generated on: 17/07/2012 11:27am Page 11 of 13</p>	<p>Surveyor: Paul William Turner</p> <p>Firm: Landlink Ltd</p>	<p>LOTS 2, 3, 5, 101, 107 &amp; 108 BEING A SUBDIVISION OF PT NGARARA WEST A79, PT LOT 1 DP 4829, LOT 2 DP 31774, LOTS 9-12 DP 17551 AND LOT 2 DP 76132</p>	<p>Title Plan</p> <p>LT 454080</p> <p>Approved on: 17/07/2012</p>
--	--	---	---

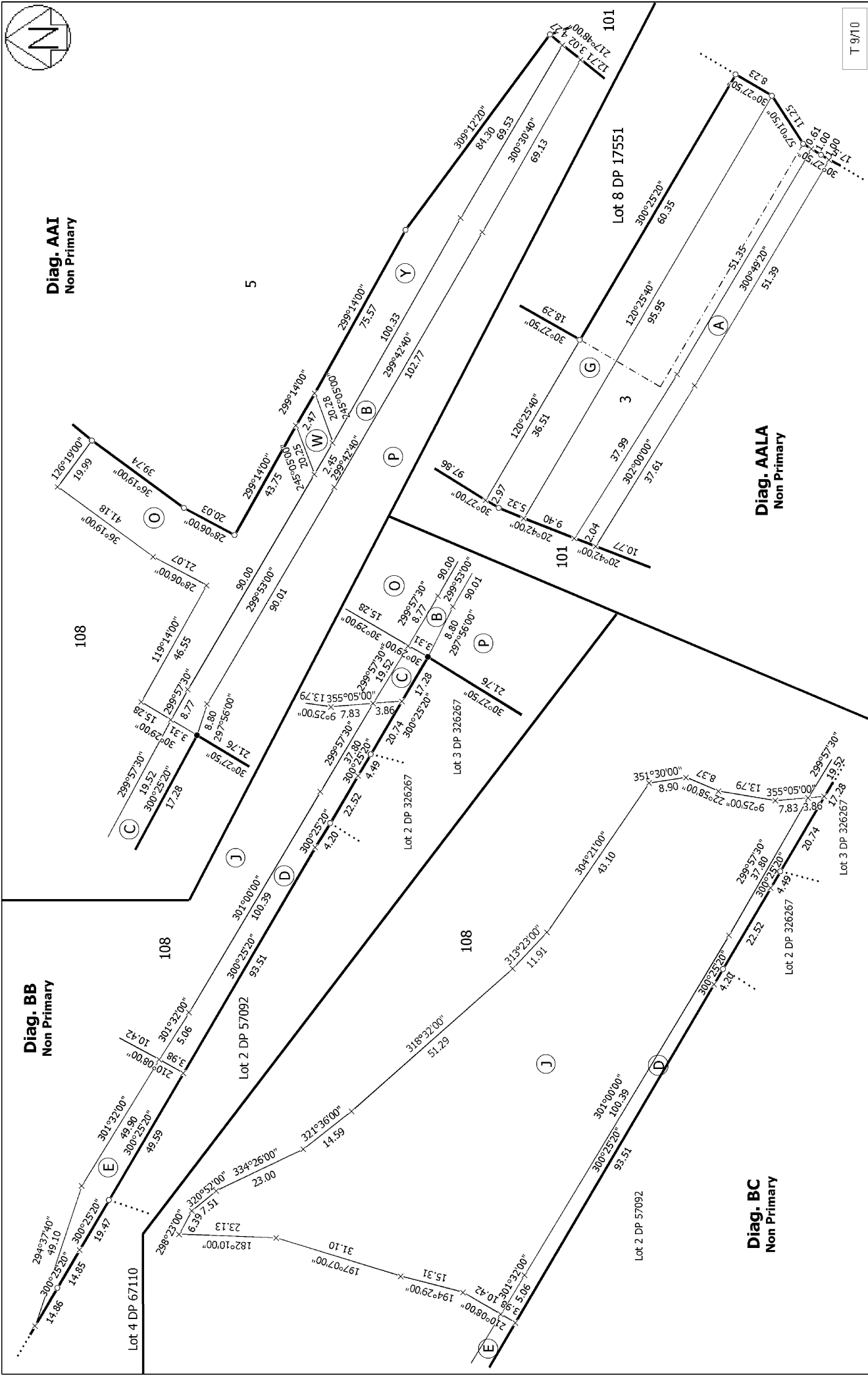


Diag. AAI  
Non Primary

Diag. BB  
Non Primary

Diag. BC  
Non Primary

Diag. AALA  
Non Primary



T 9/10

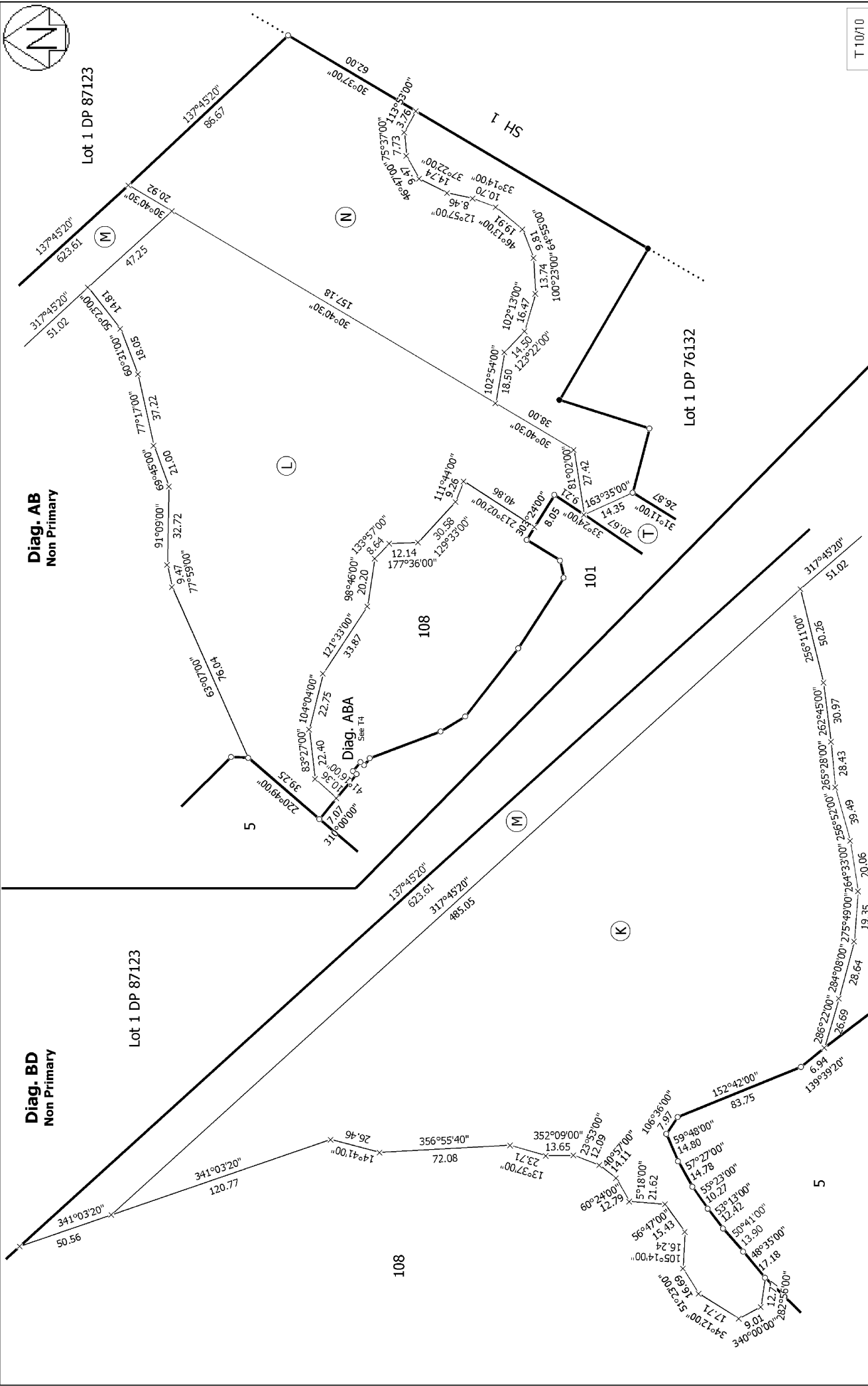
Land District: Wellington

Digitally Generated Plan  
Generated on: 17/07/2012 11:27am Page 12 of 13

LOTS 2, 3, 5, 101, 107 & 108 BEING A SUBDIVISION OF PT NGARARA WEST  
A79, PT LOT 1 DP 4829, LOT 2 DP 31774, LOTS 9-12 DP 17551 AND LOT 2 DP  
76132

Surveyor: Paul William Turner  
Firm: Landlink Ltd

Title Plan  
LT 454080  
Approved on: 17/07/2012



T 10/10

**Title Plan**  
 LT 454080  
 Approved on: 17/07/2012

Surveyor: Paul William Turner  
 Firm: Landlink Ltd

**LOTS 2, 3, 5, 101, 107 & 108 BEING A SUBDIVISION OF PT NGARARA WEST A79, PT LOT 1 DP 4829, LOT 2 DP 31774, LOTS 9-12 DP 17551 AND LOT 2 DP 76132**

Land District: Wellington  
 Digitally Generated Plan  
 Generated on: 17/07/2012 11:27am Page 13 of 13