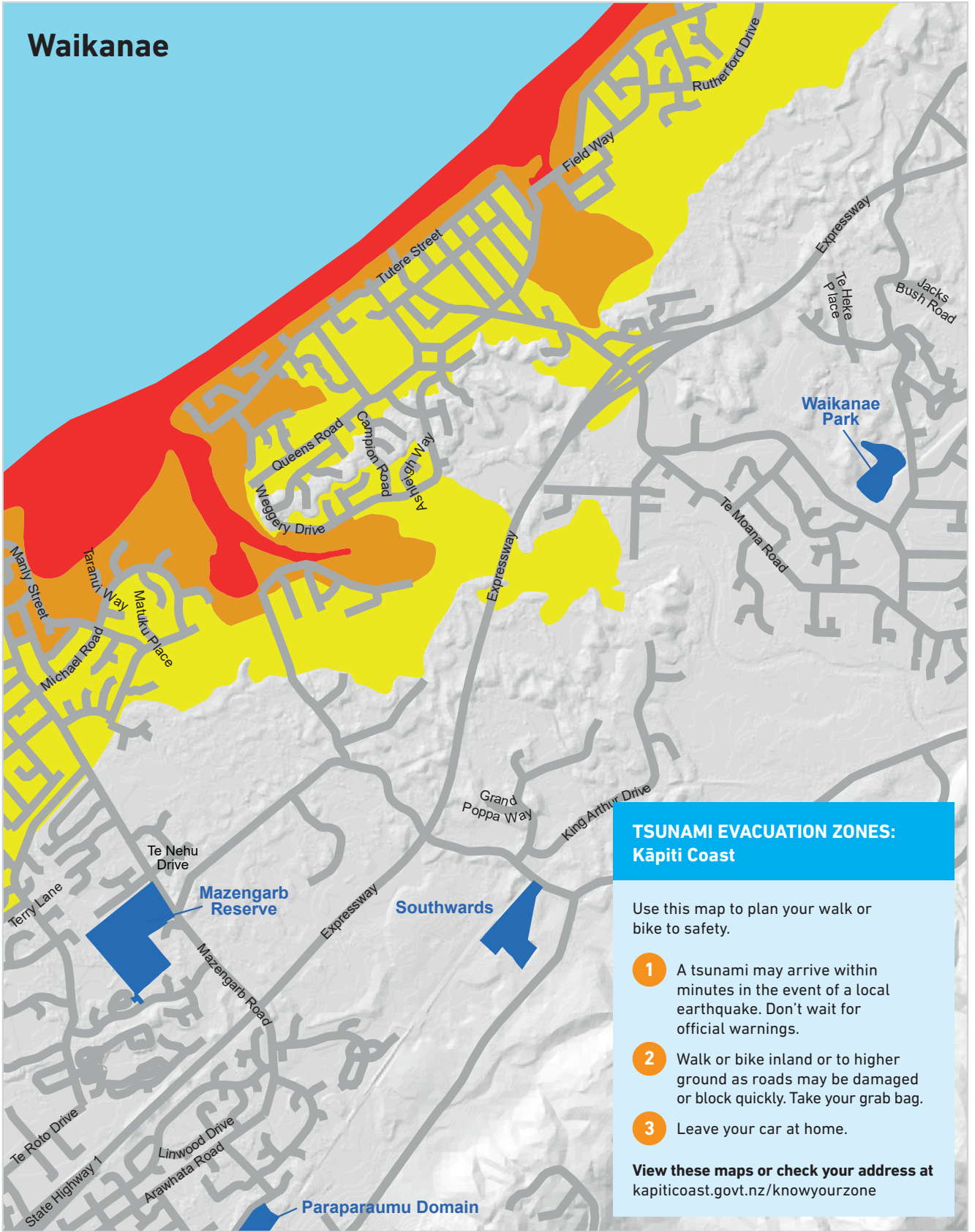


# Waikanae



## TSUNAMI EVACUATION ZONES: Kāpiti Coast

Use this map to plan your walk or bike to safety.

- 1 A tsunami may arrive within minutes in the event of a local earthquake. Don't wait for official warnings.
- 2 Walk or bike inland or to higher ground as roads may be damaged or block quickly. Take your grab bag.
- 3 Leave your car at home.

View these maps or check your address at [kapiticoast.govt.nz/knowyourzone](http://kapiticoast.govt.nz/knowyourzone)

### Tsunami Evacuation Zones March 2020

- Tsunami Assembly Areas
- Red Evacuation Zone
- Orange Evacuation Zone
- Yellow Evacuation Zone

0 0.3 0.6 1.2 Kilometres

Scale 1:25,000 @A4

