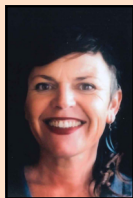


KAPITI COAST DISTRICT COUNCIL
Paekākāriki Community Board
Electing 4 Board Members



Holly Jane EWENS

My principal place of residence is in the Paekākāriki Community Board area.

Tēnā koutou, ko Holly Jane Ewens ahau. I'm looking forward to bringing the Paekākāriki Community Board closer to the heart of this engaged, caring and fierce little village. My experience over the last term appreciates the unique challenges ahead - particularly the completion of Transmission Gully and the seawall upgrade - and the potential impact on our community.

I anticipate being part of a strong team to help deliver projects with true community vision and diversity of voice.

As a resident of Paekākāriki for over 22 years and raising children here, I'm passionate about our taonga and what needs to be retained. As a trustee on the Paekākāriki Housing Trust I have an understanding of what needs to change. I look forward to doing it with you, to hearing your concerns and ideas, and to actively upholding the Paekākāriki spirit at the council table.

Ngā mihī nui.

APPROVED