

## Draft Toitū Te Whenua Parks Network Plan - Kāpiti Coast District Council submission

| Section of the Plan   | Kāpiti Coast District Council response  |
|---|---|
| <b>Objective 6: Follow a strategic, planned and benefits-based approach to new or enhanced visitor facilities</b>   |   |
| <p>A46 &amp; A47:<br/>Development of a parks marketing plan; investigate the development of the greater Wellington Area as a 'national park city'</p>                         | <p>KCDC is in support of the development of a parks marketing plan and would welcome the approach to the development of the greater Wellington area as a 'national park city' encompassing regional and other parks – provided it is in liaison with other agencies as documented in the draft strategy.</p>  |
| <b>6.4.1 Ngā kaupapa here / policies</b>  |   |
| <p>49P<br/>To allow planting of non-indigenous flora species</p>  | <p>We acknowledge that the planting of non-indigenous flora species can be justified for many of the reasons given in Policy 49P, however we consider that some of the justifications reflect outmoded views about using non-indigenous flora species to assist ecosystem restoration.</p> <p>For example, policy 49P (a.) and (b.) refer to non-indigenous flora species being used for nursery/nitrogen fixing purposes, we consider that this is no longer ecological best practice, and there is little practical justification for using non-indigenous flora species in preference to indigenous species for these purposes.</p> <p>We consider native, eco-sourced species to be most appropriate for large public landscapes, particularly where they occur in association with remnant native forest areas.</p> <p>In addition, we also understand the use and appropriateness of non-indigenous species in some instances, for example where there is a particular cultural context, historical context or amenity function to be considered.</p> |
| <b>Objective 3. To enable a variety of visitor experiences a range of facilities and services are provided to support enjoyment, mental and physical health and wellbeing</b> |   |
| <p>Investigate the development of a casual horse riding permit system such as a 'parks horse riding pass'....</p>   | <p>KCDC oppose the requirement of a 'parks horse riding permit' if such a permit would create restrictions or a barrier to easy access to horse riding in the regional parks. We note that no other user group would require a permit.</p> <p>Generally the plan considers horse riding in a positive way and we support the proposed inclusions, noting our comment above.</p> <p>We ask that the Kapiti Equestrian Advocacy Group are considered a stakeholder with regard to any changes to do with equestrian use of parks in Kapiti.</p>   |

| <b>Proposals relating to Queen Elizabeth Park (QEP)</b>   |   |
|---|---|
| <p>Section 1.3 Looking back<br/> '.....Tracks are being relocated inland and other facilities moved'.</p> | <p>We would like to see a Coastal track maintained at QEP, as the view of the coast from this aspect, and the ability to walk in the Coastal dunes, is a unique feature of this park. Retaining the Coastal track allows a loop walk with the Inland track which could be a key feature, promoted as an alternative/add on to the Escarpment track, which receives around 30,000 visitors a year.</p> <p>In addition to the tourism advantages, this is also an extremely popular track for Kapiti residents.</p>   |
| <p>Enhanced cycling, running and walking network</p> <p>A344 (h)<br/> Family cycling (Recreation)</p>     | <p>The Park is used and enjoyed daily by walkers, runners, bikers (both recreational and commuters) and tourists. The trails (especially the sealed Te Ara o Whareroa) are used by commuters to link Paekākāriki and the rest of the Coast. Along with the Expressway shared path, they form an application from KCDC to CycleNZ for a Heartland Ride, which will eventually form an off-road link from Paekākāriki to Ōtaki. This has significant tourism potential which KCDC is exploring. The experience would be enhanced with fresh water outlets at key places on Te Ara o Whareroa, such as the bisection with Whareroa Rd.</p> <p>We support the family cycling (recreation) with skills and pump tracks, and links to Whareroa Farm and the Akatarawa Forest – provided it is designed and built appropriately for the surrounds and environment and managed accordingly.</p> |
| <p>A327<br/> Masterplan – overarching priority action fbor park</p>                                       | <p>We are supportive of a landscape masterplan being developed and would like KCDC to be engaged as a stakeholder. Both through the parks team and also in relation to infrastructure (Access and Transport) at Poplar Ave for example where there are currently challenges with multimodal interaction, school servicing etc. on Poplar Avenue). The interface between GWRC and KCDC managed areas at a prospective new entrance is to be well thought through including early engagement and involvement in design process.</p> <p>We strongly support development of equestrian facilities at QEP as a key part of the equestrian facilities network.</p> <p>Consideration could be given to providing space for use by members of the NZ Motorhome Association.</p>   |
| <p>A344 (b) and A346<br/> Raumati South Access and Amenity</p>  | <p>We are very supportive.</p> <p>It is observed that the main historical focus of activities and amenity is currently to the southern end of the park and distinctly 'Wellington facing'. Improved access via Te Ara o</p>   |

|   |  |
|---|--|
|   | <p>Whareroa has in recent years improved this and it will be good to see more of the park development addressing the Kāpiti Coast Community to the north in years to come. The northern end of Te Ara o Whareroa is missing a destination point/trail head to start/finish activities within the park. Linking onto future tracks to explore wider within the park will be advantageous for all.</p>   |
| <p>A351<br/>Trail enhancements</p>              | <p>Fitness trails, pump tracks or activity stations need to be designed and built appropriately for the surrounds and environment and managed accordingly.</p> <p>Consideration could be given other e-bike provision such as charging stations in addition to other bike activities and specialty skills areas if appropriately designed and constructed.</p> <p>Supportive of planning for entry/mid-range mountain bike tracks to provide for advanced beginners.</p> <p>We would like to see facilities for trails included in planning and delivery. This includes toilets and suitable parking for cars, and cars with trails and or horse floats.</p> |
| <p>Dedicated bridleway network</p>              | <p>We would like to see a dedicated horse track in the park, connecting north to south, to connect the Pony Club (Poplar Ave) to the equestrian park at Mackays Crossing.</p>  |
| <p>Restoration</p>                              | <p>We strongly support the long-term goal of restoring hundreds of hectares of wetland and coastal native forest. If it comes to fruition QE Park will be the largest restored area of the coastal plain in the district, and an outstanding biodiversity asset. Between Paekākāriki and Raumati, there will be almost unbroken sequences of restored habitats from the coastal dunes to the Akatarawa foothills.</p> <p>Implementation will be key to the successful delivery of restoration.</p>   |
| <p>Map 25 High level restoration priorities</p> | <p>We are supportive but note that there has been failure of plantings alongside Te Ara O Whareroa north end. Perhaps the stock irrigation lines could be repurposed to help irrigate planting areas during establishment?</p> <p>We consider that the coastal dune restoration should be higher than a 4<sup>th</sup> priority - the blackberry is becoming dominant.</p>   |
| <p>Map 24 QEP Potential enhancements</p>        | <p>We would like to see provision of connecting cycle trail from The Parade, behind the existing surf club and up to Wellington Road perhaps via the driveway from the Rangers House.</p> <p>As stated previously, we are not supportive of decommissioning the coastal track without an equivalent alternative being confirmed prior.</p>   |

| <b>Proposals relation to Akatarawa Forest</b>                                     |  |
|---|--|
| A100 (c)<br>Akatarawa Traverse  | We support this proposed track and ask that KCDC is recognised as a partner as we manage Campbell's Mill Rd for recreational access.   |
| Key stakeholders should include walking, trail running, MTB and equestrian groups | <p>We would like to see non-motorised recreation groups recognised as key stakeholders in the forest. From Campbell's Mill Rd entrance there are many tracks popular with mountain bikers (MTB), trail runners, walkers and horse riders. The route up Campbell's Mill Rd, down Whakatikei Rd and up Hydro to Orange Hut, and Perhams to Titi are particularly important in the MTB network on the Kapiti Coast. These tracks form part of our recreation base in Kapiti. These tracks are especially important as grade 2/3 tracks are rare in this district, and we would like to promote them more.</p> <p>We would like to see the Kapiti MTB Club, the Coastal Crew and equestrian clubs included as key stakeholders.</p> <p>There are a number of opportunities listed in the section "Park opportunities" which we support, for which early engagement with the MTB and equestrian community would be good to have.</p> <p>The 1000 hectares of original lowland podocarp forest and 500 hectares of beech/rimu/miro represent opportunities for non-motorised use. There are substantial tourism benefits to be unlocked from promoting the ancient rata trees, and we would like to see tracks to these developed appropriately. Consideration would need to be given to appropriate development for tourism whilst protecting the environment, ie enhancing the existing Akatarawa Traverse track with points of interest along the way such as the Rata Trees.</p> |
| Motorised recreation vs restoration   | <p>The ongoing designation of high biodiversity value areas of the Akatarawa Forest Park as a prime 4 X 4 recreation area could be considered to contradict the plan's environmental philosophy. This form of recreation is incompatible with protecting and restoring such areas. It is difficult to 'minimise adverse effects' and there is nothing in the plan to suggest any new or more effective means of doing so will be instigated.</p> <p>This area has become 'regionally significant' for this activity over time as it has been developed and managed to facilitate it, rather than because of any intrinsic suitability. It could be argued that it is intrinsically unsuitable because of its biodiversity values.</p> <p>However, we acknowledge that there is the need for a 4x4 recreation area and support this provided it is well managed and uses appropriate locations. Improved management of the activity would be beneficial. Consideration should be given to improved access control such as GPS on vehicles and / or gate access not via a key that can be shared around easily.</p>  |

Akatarawa future opportunities

We suggest for inclusion the idea of a potential summit track from the Maungakotukutuku Valley to the summit of Papakirae be explored and included in the plan. This could potentially connect to the paper road at the extension of Old Valley Road near the Nikau Centre and substation. This would greatly enhance the Mountains to Sea and back country recreational access for Paraparaumu residents.

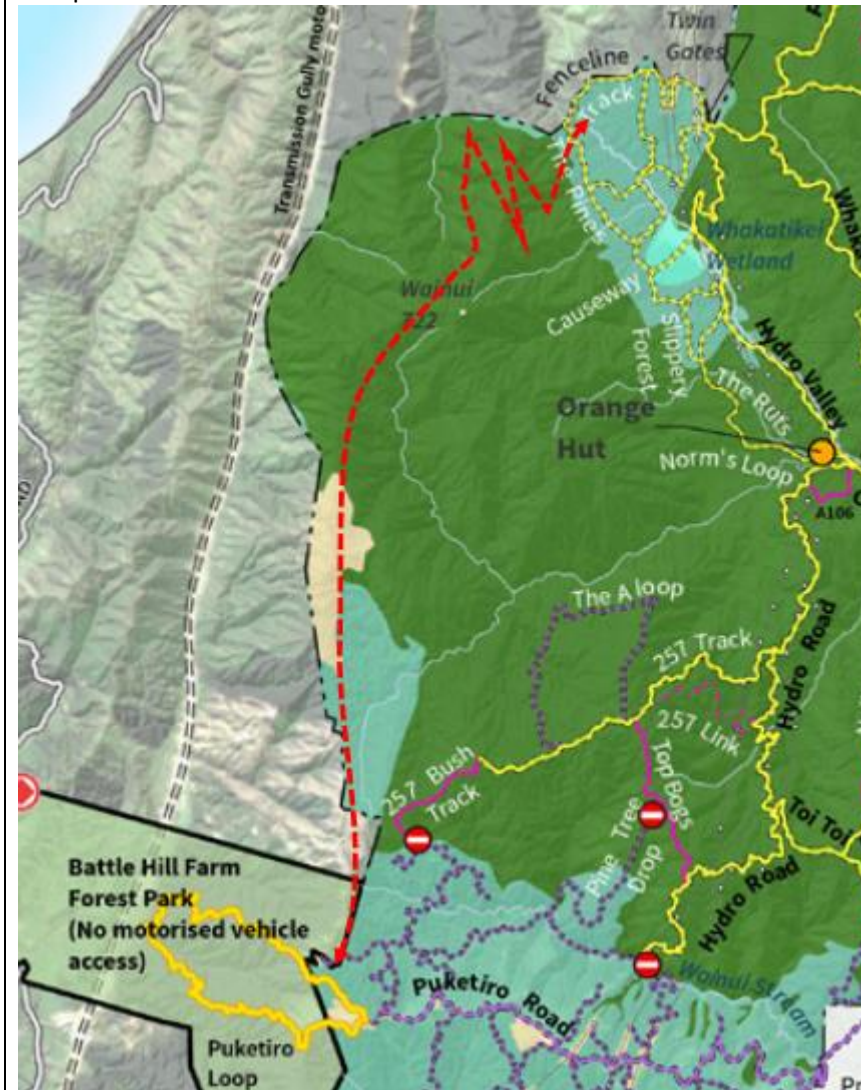


We suggest for inclusion identification of a superior MTB route than the Pram track be considered for future development of MTB specific infrastructure in the Akatarawa Forest. This will better connect the Kapiti Coast with Upper Hutt. We also recommend that better signage and maps be provided at key junctions/roads to provide better guidance for all park users.

We suggest for inclusion a track from southern end of Maungakotukutuku Road to the KCDC owned future dam site in Nikau Valley. This could potentially provide a grade 2/3 MTB connection and greatly enhance back country recreational access for Kapiti Residents.



We suggest for inclusion the idea of a potential track from southern end of Campbell's Road below and around the summit/flanks of Mt Wainui to the upper Puketiro loop in Battle Hill be explored and included in the plan. This could potentially provide a grade 3/4 MTB experience similar to what the hugely popular Paekakariki to Pukerua Bay escarpment track provides for walkers. This would greatly enhance back country recreational access for Paraparaumu & Porirua residents.



**FUTURE LANDUSE AND NETWORK GROWTH**

Wainuiwhenua (Perkins Farm)

We believe that it would be appropriate in this future focused document to acknowledge the following:

- That there are significant areas of land between Akatarawa Forest Park, Battle Hill and Queen Elizabeth Park that are currently part of the Transmission Gully Motorway designation which may have significance for the regional parks network in the future.
- Wainuiwhenua is a community led focus group that has been established to advocate for the long-term use of this land.
- That these areas may have strategic significance for the rationalisation, connectivity or future development of the regional parks network, or the protection and enhancement of landscape, stream catchment or biodiversity values which will be relevant to the Regional Council’s activities.

Otaki Lakes

We also believe that it would be appropriate in this future focused document to acknowledge the following:

- That the land north of the Ōtaki River currently known as “Winstone Lakes” is owned and managed by GWRC, currently for river management purposes.
- That the lakes currently, and increasingly support a range of recreational functions including Waka Ama and Canoe Polo and planning should include the lake’s ability to host national events in the future.
- That the lakes are to be progressively restored to support recreational and environmental outcomes as part of the resource consent conditions.
- That at the completion of gravel extraction works and should the land (or part of the land) no longer be required for River Management purposes an assessment and determination of this land holding in relation to the definition of Regional Park provided in the Local Government Act s139 (1) (a) will be undertaken with a resolution from GWRC to determine its future function and use as a regional park. Specifically in this section and [section 139A, regional park—](#)  
(a) means land—  
(i) owned by a regional council; and  
(ii) acquired or used principally for community, recreational, environmental, cultural, or spiritual purposes...
- There may also be an opportunity for future inclusion of the adjacent privately owned land currently being used as a quarry, once the quarrying has ceased.

| Additional Comments:                                |   |
|---|---|
| Biodiversity, ecosystem and restoration             | <p>Overall, the draft GW Parks Network Plan is sound from a biodiversity protection and restoration perspective. Making ecosystem health central to park management is enlightened, and the shift from farming and plantation forestry to restoration is in tune with changes in community values and aspirations.</p> <p>We would like to see more specificity regarding when and how things will actually happen.</p>                                   |
| Inclusion of key stakeholders in planning processes | <p>We would like KCDC's CWB Advisory Group should be a stakeholder in all CWB consultation in relation to QEP and Akatarawa Forest Park.</p> <p>We would like the Kapiti Equestrian Advocacy Group (KEAG) to be a stakeholder with regard to equestrian facilities and activities in QEP and Akatarawa Fores Park.</p> <p>We would like KCDC officers to be included in the key stakeholder involvement with regard to QEP and Akatarawa Forest Park.</p> |
| Education activities                                | <p>We strongly support the educational approach to the plan. We would particularly like to see outdoor education classrooms being a part of regional parks where appropriate.</p>   |