

# **Local Water Done Well Elected Member Briefing**

Local Water Done Well update

15 April 2025

# Purpose of this briefing

- Consultation Summary
- Preliminary consultation feedback
  - High-level results
  - Specific matters
- Next steps

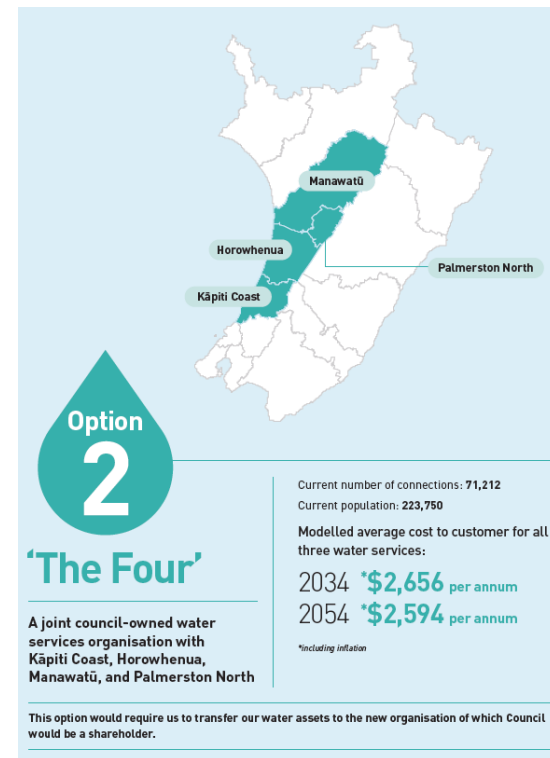
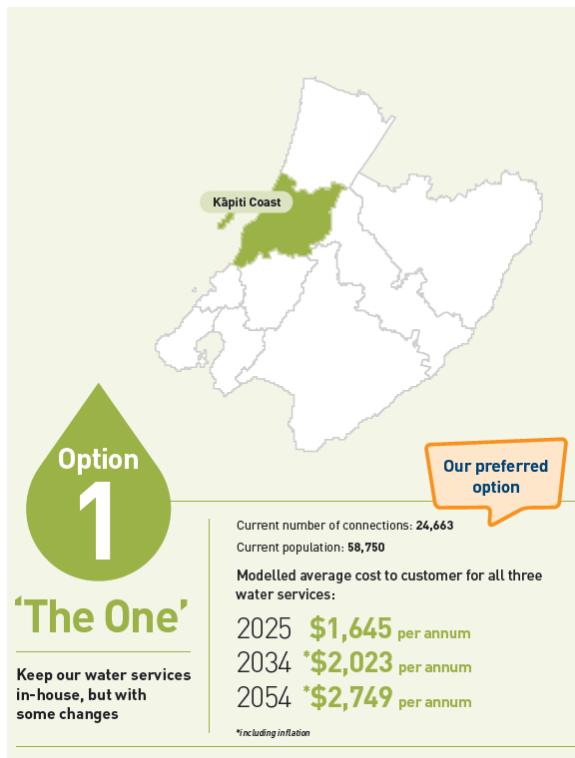
# Summary of consultation

- Local pop ups x 5
  - Ōtaki / Paraparaumu / Waikanae / Raumati Paekākāriki
- Live webinar
- Council digital channels
- Ratepayer email
- Over 520 submissions
  - 418 online
  - 103+ hard copy and emails













# Preliminary feedback

94%

6%



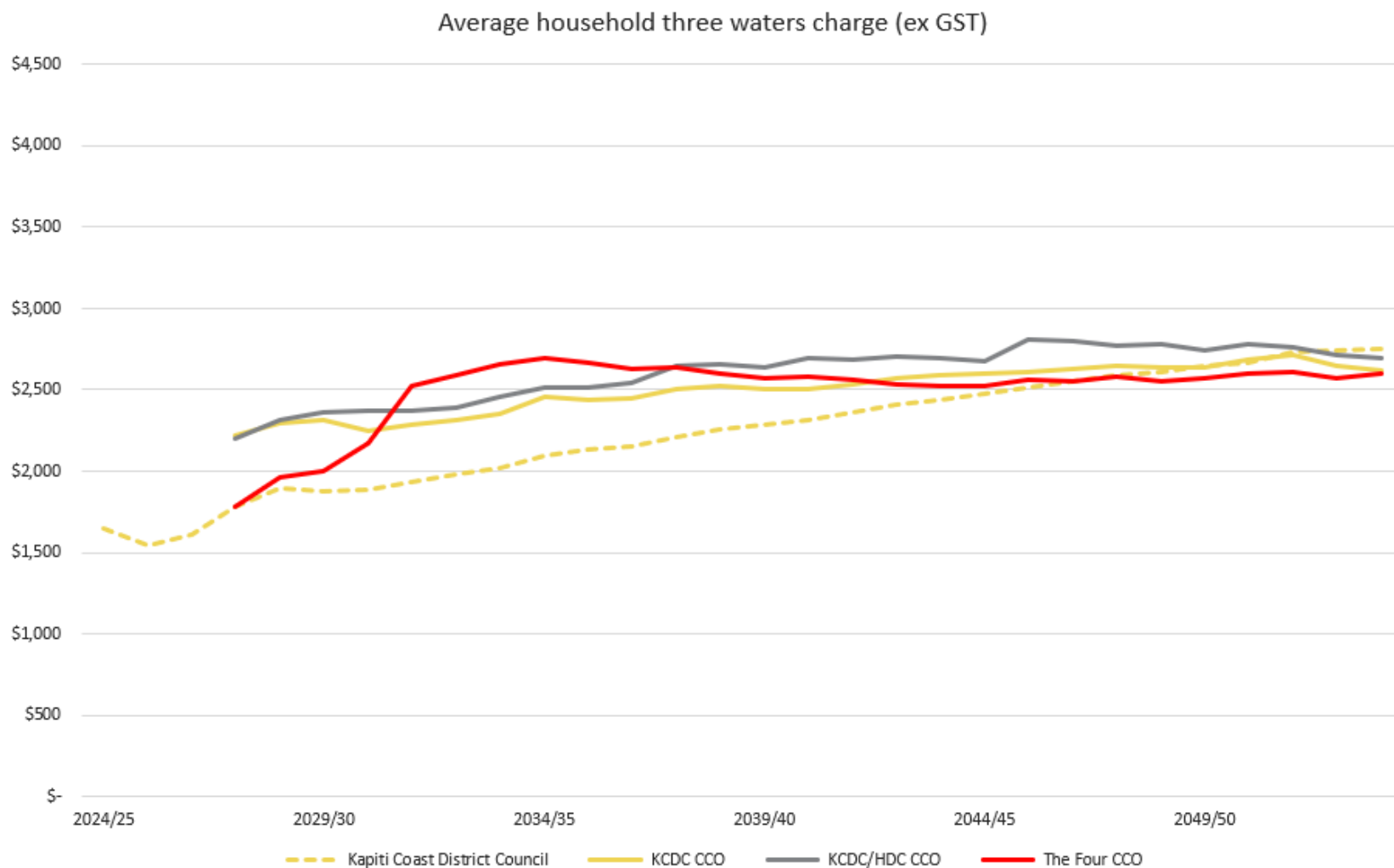
# Community priorities

	Ranking	"One" Council internal Business Unit	"Four" Council COO KCDC, HDC, MDC & PNCC
<b>Safe and reliable services</b>	<b>86%</b>		
<b>Public Ownership</b>	<b>77%</b>		
<b>Financially sound</b>	<b>64%</b>		
<b>Resilience</b>	<b>54%</b>		
<b>Local priorities</b>	<b>44%</b>		
<b>Mana whenua aspirations</b>	<b>30%</b>		

# Specific points of discussion

- Consideration of other discounted options
  - Kāpiti Only WSO option
  - Kāpiti Horowhenua WSO option
- Ringfencing of water services costs
- Council debt repayment strategy
- Four Council option
  - Possible price harmonisation pathways

# Kāpiti-only and Kāpiti / Horowhenua Average household charges over 30 years



# Ring fencing

## Revenue and Financing Policy

Activity	Where charged	How charged	Proportion
Water Supply	Water rates invoice	Targeted volumetric rate & Targeted fixed rate (per SUIP)	40-50% 50-60%
Wastewater	Property rates notice	Targeted fixed rate	100%
Stormwater & flood protection	Property rates notice	Targeted stormwater area rate (capital value) Districtwide general rate (land value)	55-65% 35-45%

### Property rates notice example

This is the annual rates assessment for Kāpiti Coast District Council

Rate Type Description	Category Identification	Factor
Districtwide General	Urban Rating Areas	Land Value
Community Facilities	RU excl accom/hospitality	SUIP
Waikanae Community Rate	Waik Urban and Rural	Capital Value
Wastewater Disposal	Connected - General	RU
Districtwide Stormwater Rate	Stormwater Drainage Areas	Capital Value
Districtwide Roadway Rate CV	Whole District	Capital Value

### Water Rates invoice example

#### Districtwide Water Supply Volumetric Rate

Meter number	Meter ID	Previous 8/11/24	Present 12/02/25	Units used (m3)	Multiplier	Rate	Amount
1	13MC174451	1378	1446	68		\$1.390	\$94.52
Total Volumetric							\$94.52

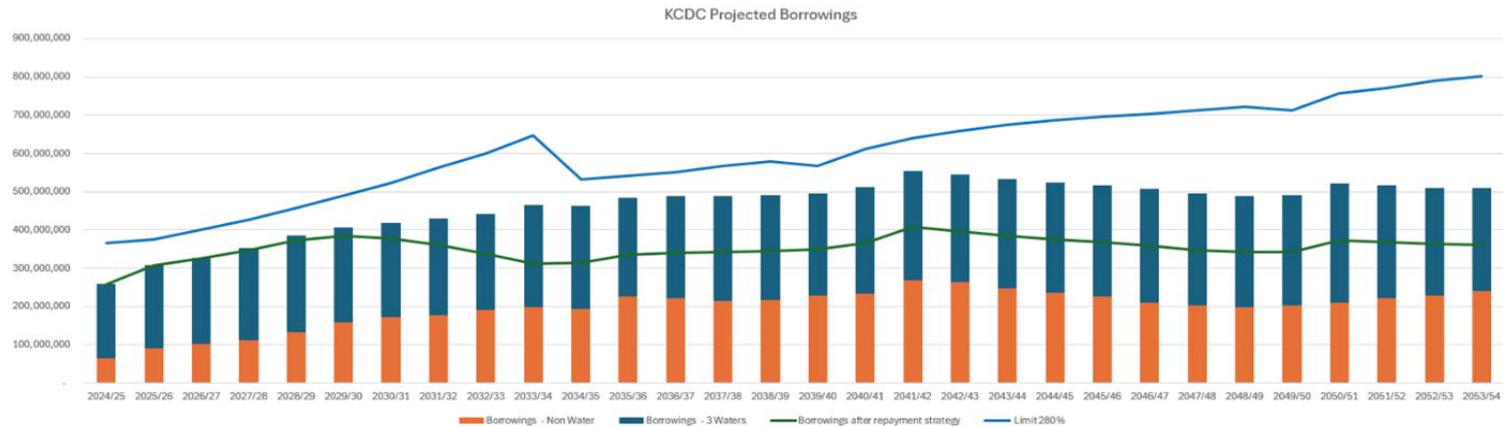
#### Districtwide Water Supply Fixed Rate

Annual Rate per SUIP	Number of days	Previous 8/11/24	Present 12/02/25	Number of SUIP*	Daily Rate	Amount
\$260.00	96	8/11/24	12/02/25	1	\$0.7123	\$68.38
Total Fixed						\$68.38
Current Charges						\$162.90

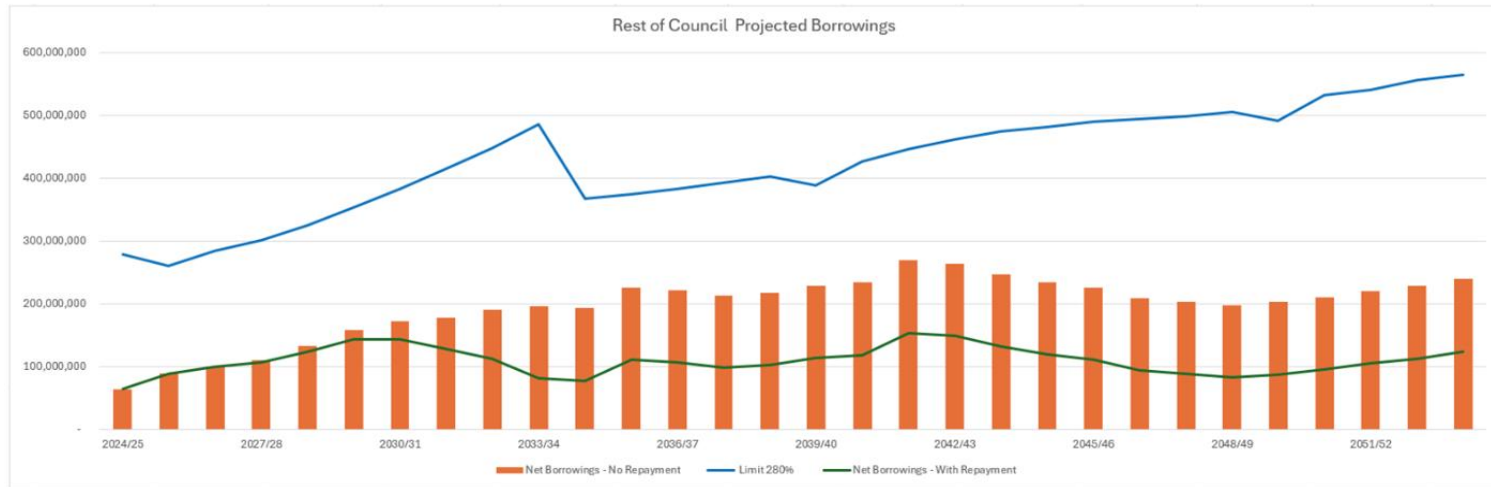


# Debt repayment strategy

Council,  
including  
water



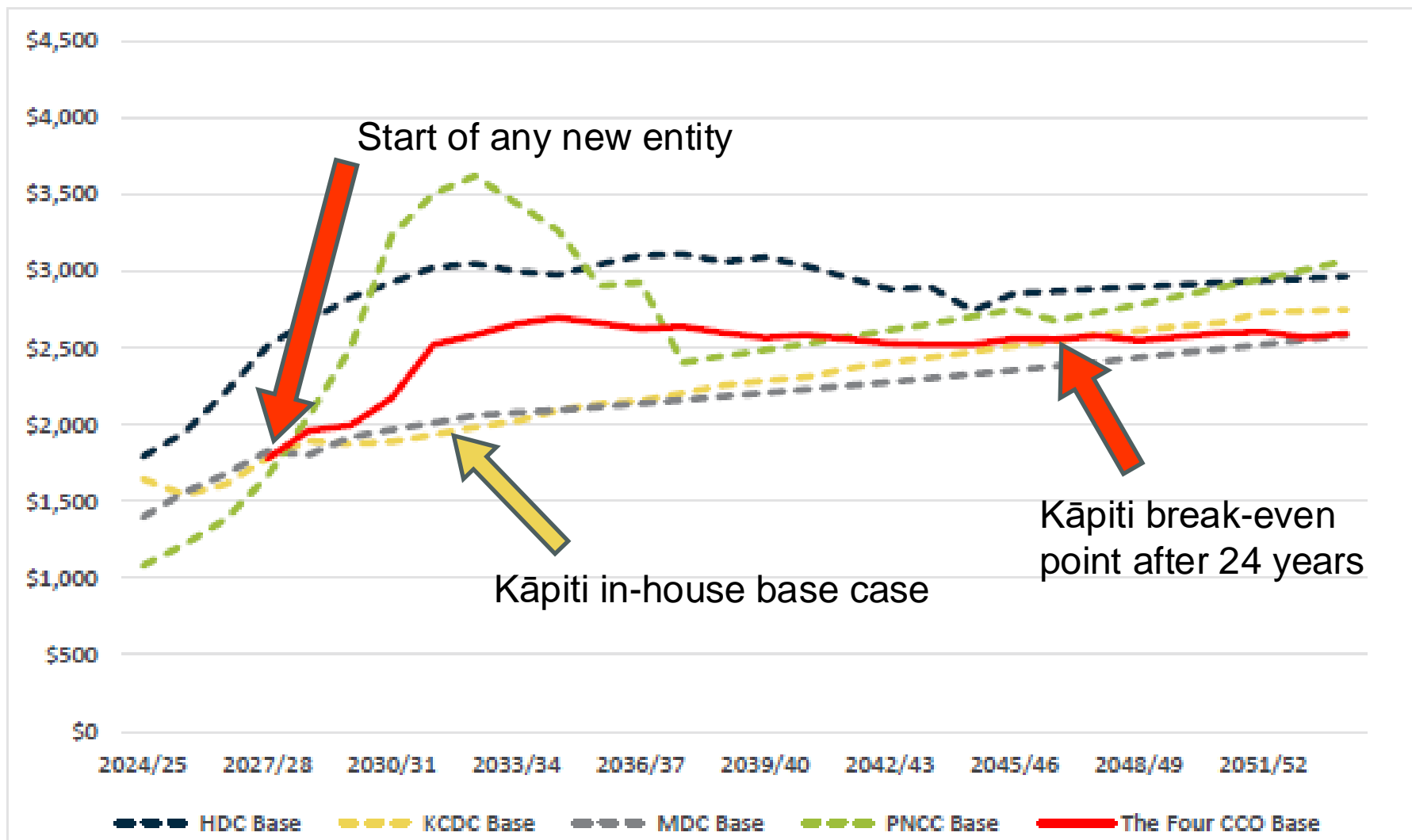
Council,  
excluding  
water



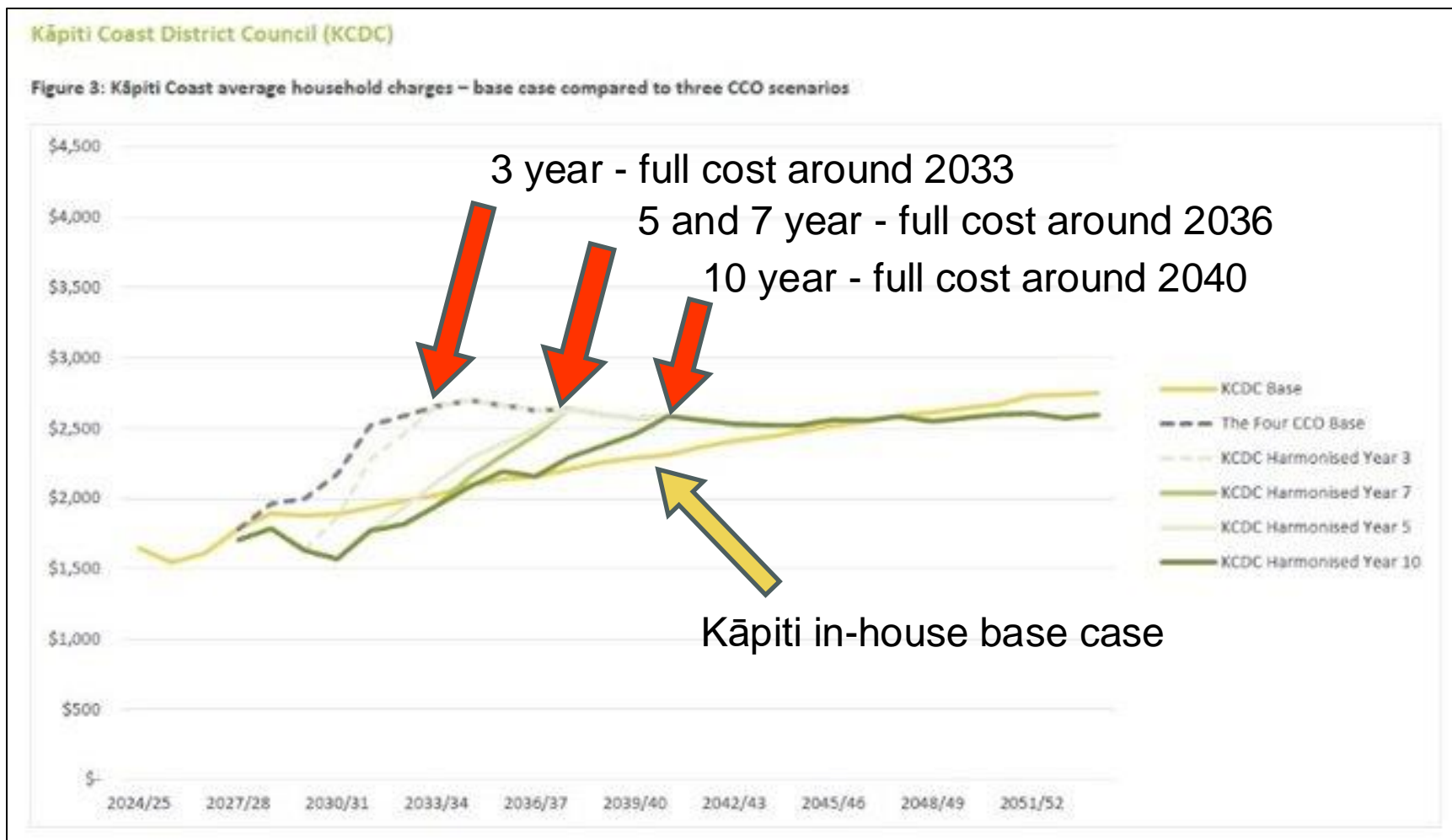
The green line in each graph represents net debt after the debt repayment strategy

# Four Council Option

## Average household charges over 30 years

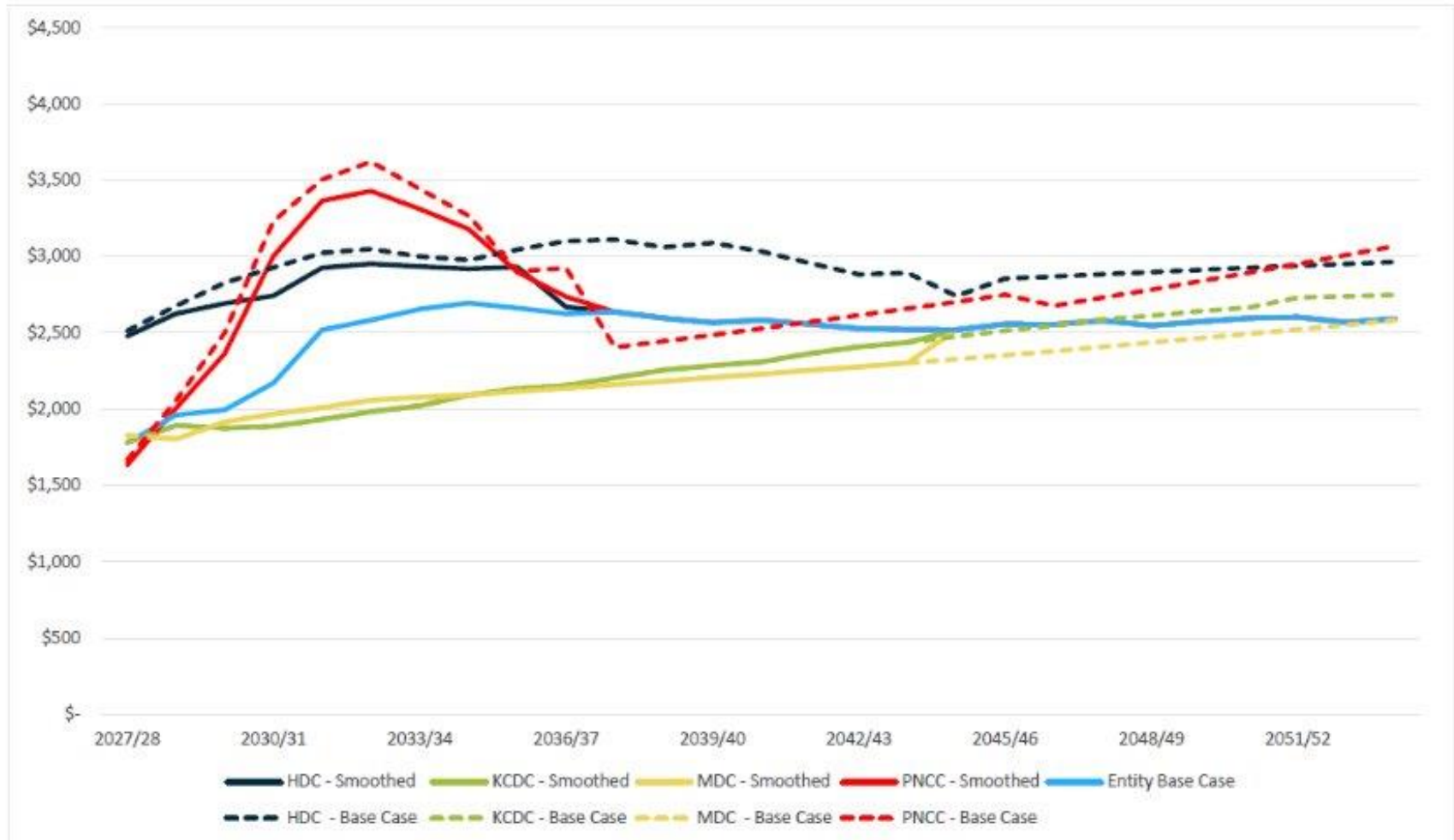


# Modelled price harmonisation scenarios at 3, 5, 7 and 10 years



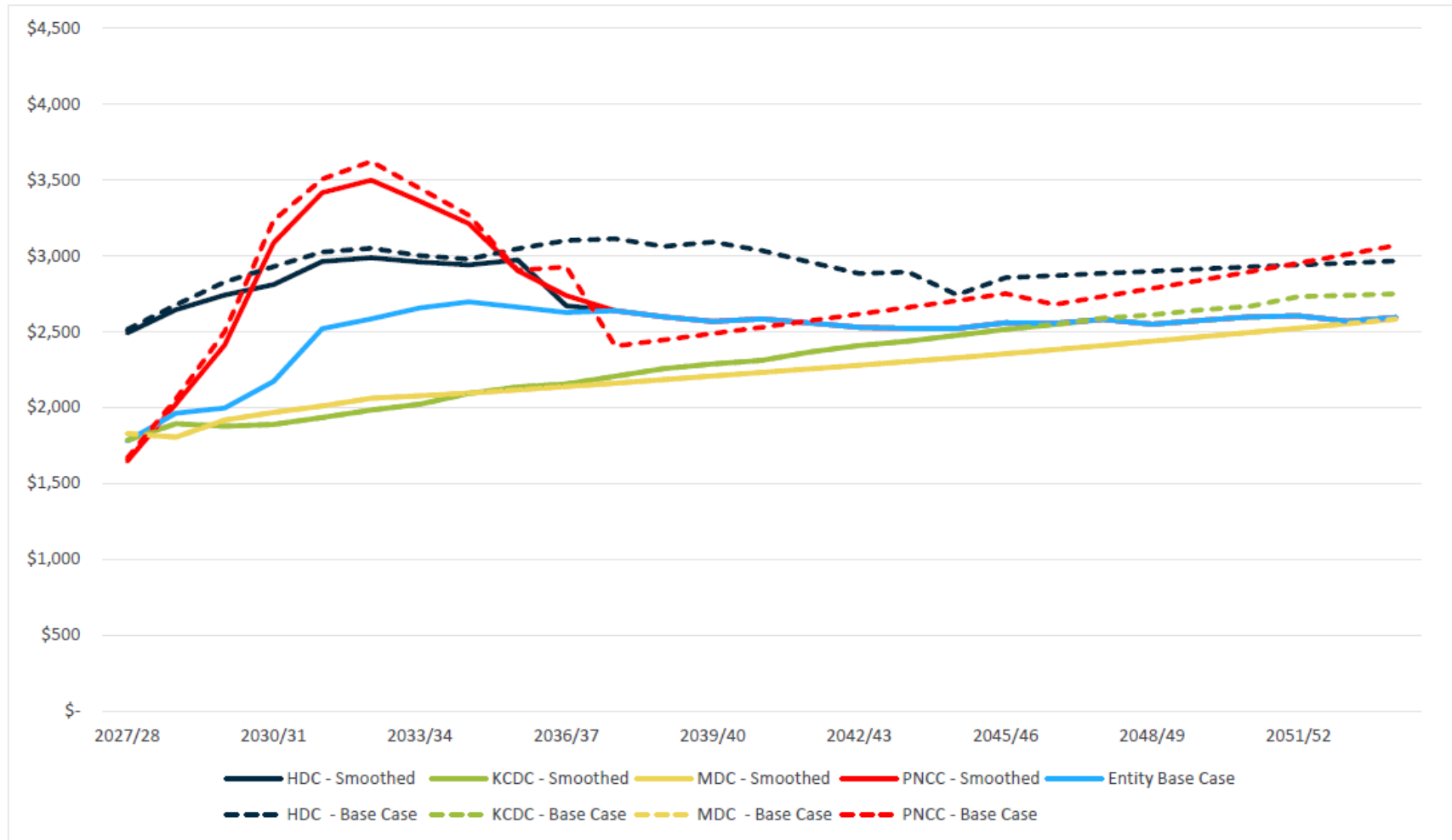
# Modelled price harmonisation scenario after 20 years

Figure 8: Smoothed price path over 20 year v base case



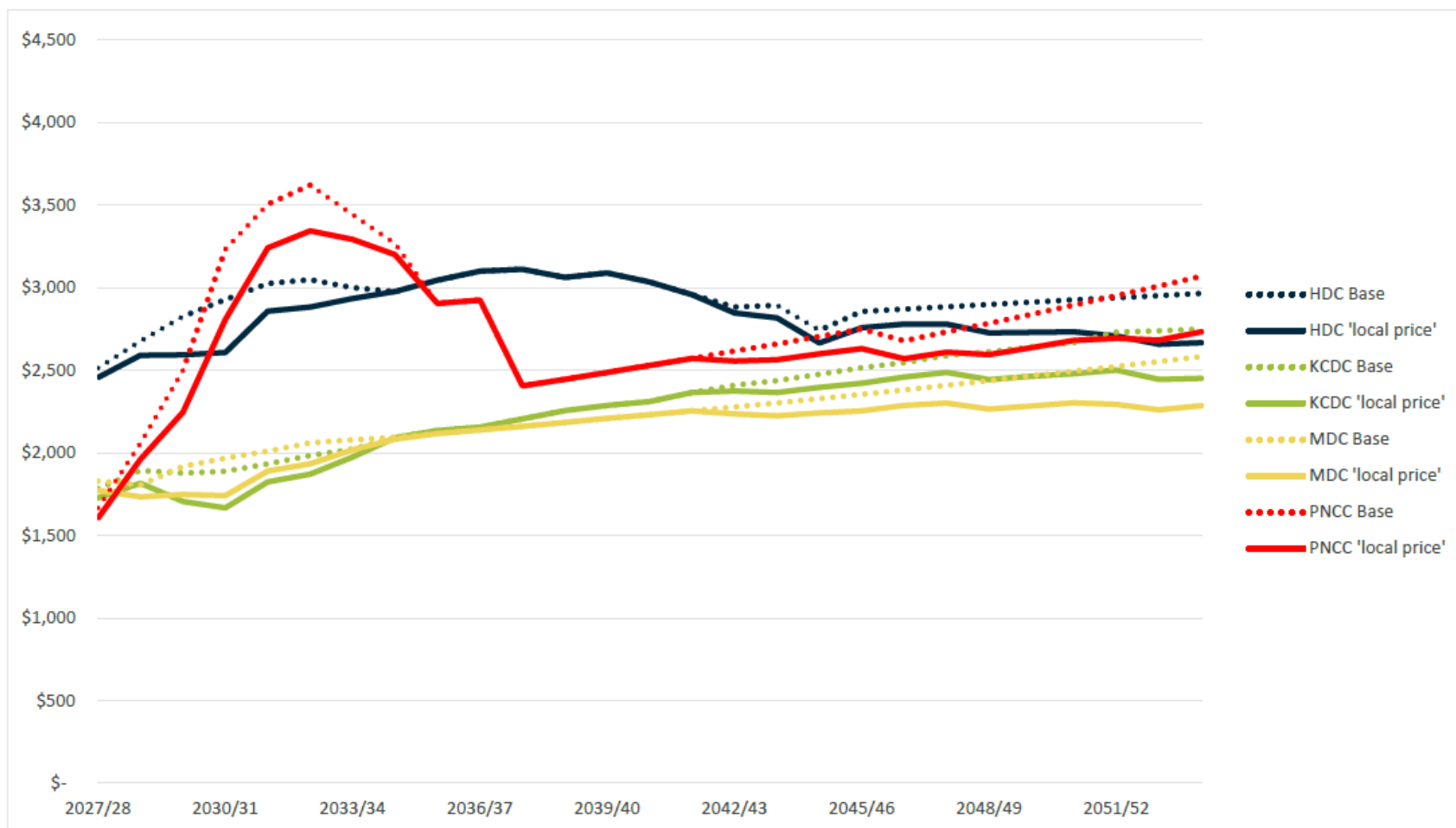
# Modelled price harmonisation scenario after 30 years

Figure 10: Smoothed price path over 30 year v base case



# Modelled price scenario with no harmonisation

Figure 12: Base Case v no harmonisation in perpetuity



# Next steps

- Consultation Feedback
  - Detailed analysis underway
- Hearings - 1 May 2025
- Members briefing on consultation findings – 15 May 2025 TBC
- Council decision on the Water Services Model - 27 May 2025
- Water Services Delivery and Implementation Plan CE Certification and adoption by the end of June
- The Water Services Delivery Plan lodged with DIA - 3 September 2025

# Discussion and questions