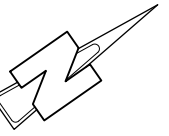


**8x4  
FUEL TANKER**

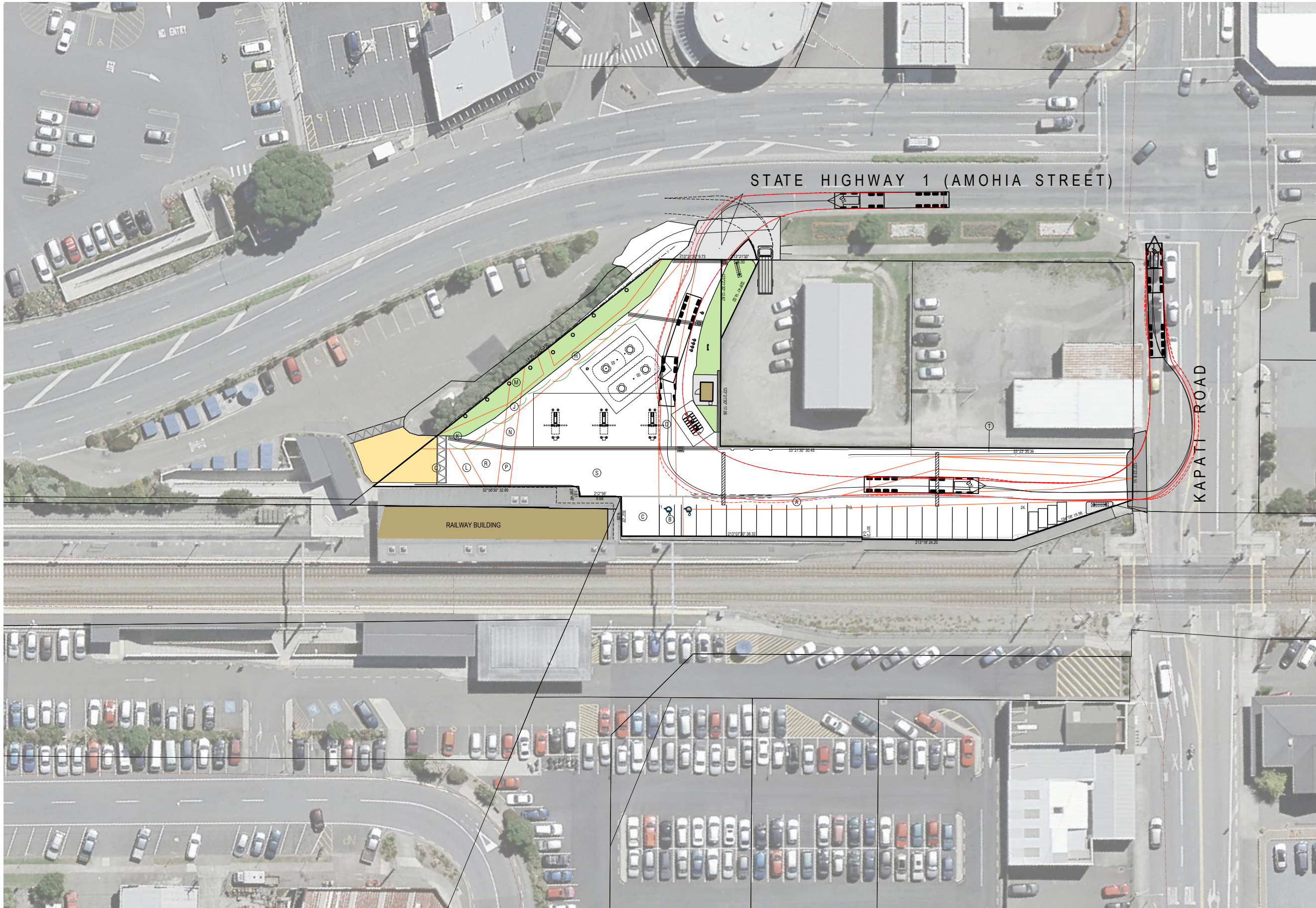
TRACTOR WIDTH	2500mm	TRAILER WIDTH	2500mm
TRACTOR TRACK	2500mm	TRAILER TRACK	2500mm
LOCK TO LOCK TIME	6.0 SEC	ARTICULATING ANGLE	70.0°
STEERING ANGLE	25.5°		

**LEGAL DESCRIPTION:**

PT LOT: 1  
 DP: 77182  
 SEC: 8  
 SOP: 38192  
 CT: WN56A/909  
 TOTAL AREA: 2247m<sup>2</sup>



**INDUSTRIAL USE ZONE**



© THIS DOCUMENT IS CONFIDENTIAL. COPYRIGHT IS VESTED IN GULL NEW ZEALAND. WRITTEN CONSENT IS REQUIRED PRIOR TO REPRODUCTION.	A1 Scale:	1:300
	A3 Scale:	1:600
	Designed:	L.MEIKLEJOHN
	Drawn:	-
	A1 Plot Scale:	1:1
	A3 Plot Scale:	1:2

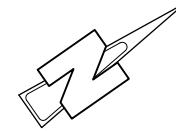
**NOTES**  
 DO NOT SCALE.  
 DIMENSIONS IN MILLIMETERS UNLESS NOTED OTHERWISE.  
 IF IN DOUBT ON ANY ISSUE SEEK VERIFICATION PRIOR TO PROCEEDING.  
 READ THESE DRAWINGS IN CONJUNCTION WITH ALL OTHER CONSULTANTS DRAWINGS AND SPECIFICATIONS.

REV.	DESCRIPTION	BY	DATE
E	TRAFFIC ENGINEERING REVS	MK	25-11-19
D	RAISED ENTRY REVS	MK	25-09-19
C	RC REVISION	MK	08-08-19

**GULL PARAPARAUMU**  
 PROPOSED FUEL FACILITY  
 3 Kaiti Road, Paraparaumu



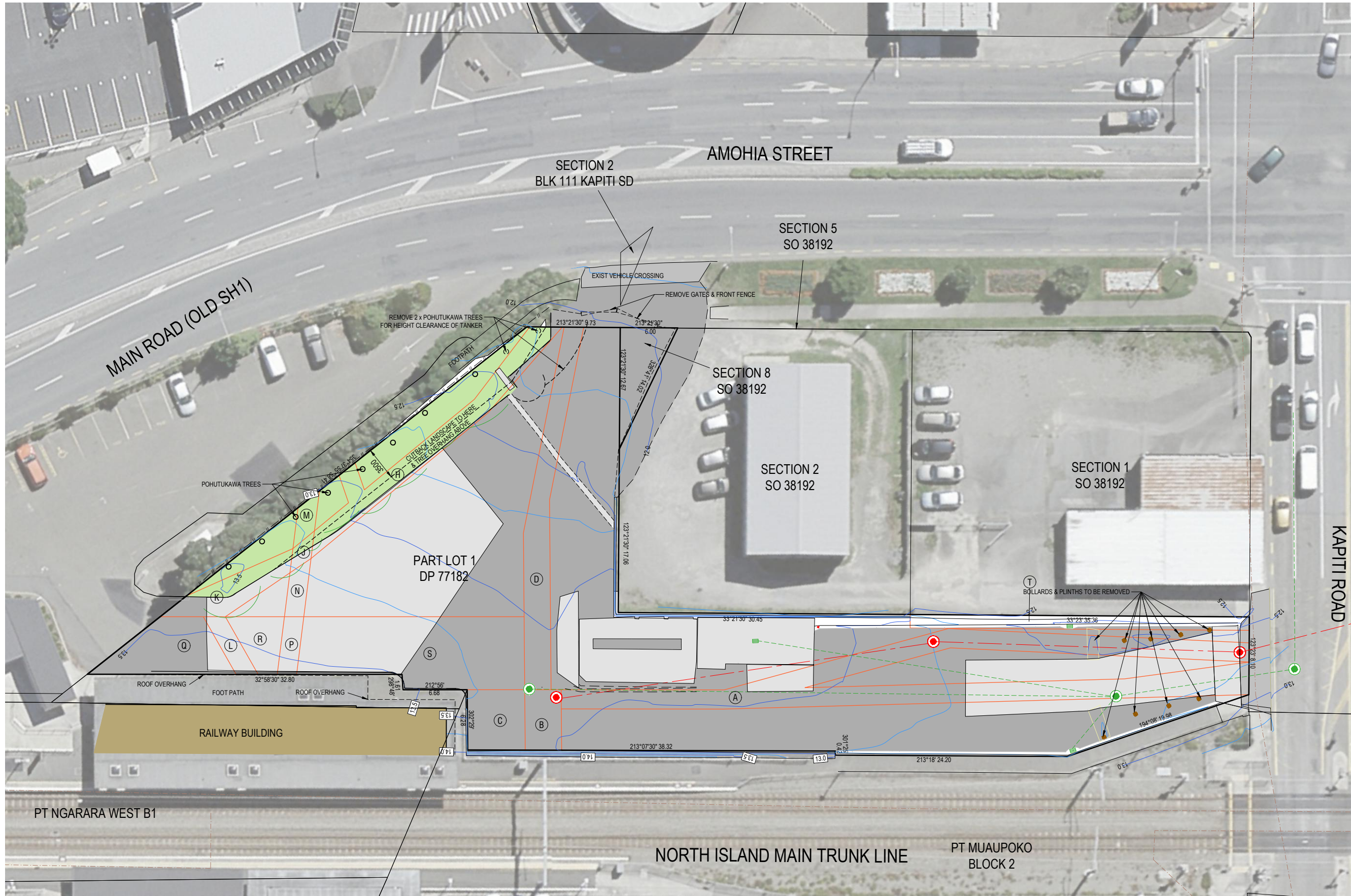
Drawing:  
**Proposed Overall Site Plan  
 & Tanker Tracking**  
 Drawing No. **2982-F01** Revision. **E**



EXISTING AREAS TABLE - GULL PARAPARAUMU	
IMPERVIOUS (HARDSTAND)	2073 m <sup>2</sup>
LANDSCAPED (PERMEABLE)	174 m <sup>2</sup>
BUILDINGS	N/A
TOTAL SITE AREA	2247 m <sup>2</sup>

LEGEND:

- EXISTING LANDSCAPE
- EXISTING TARSEAL
- EXISTING CONCRETE
- T EASEMENT LABEL
- DEMOLITION WORKS
- COUNCIL SANITARY SEWER
- COUNCIL STORMWATER SEWER
- MANHOLE - WASTEWATER
- MANHOLE - STORMWATER
- 12.0 INDICATES EXISTING CONTOURS



© THIS DOCUMENT IS CONFIDENTIAL. COPYRIGHT IS VESTED IN GULL NEW ZEALAND. WRITTEN CONSENT IS REQUIRED PRIOR TO REPRODUCTION.	A1 Scale:	1:200
	A3 Scale:	1:400
	Designed:	L.MEIKLEJOHN
	Drawn:	-
	A1 Plot Scale:	1:1
	A3 Plot Scale:	1:2

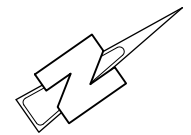
**NOTES**  
DO NOT SCALE.  
DIMENSIONS IN MILLIMETERS UNLESS NOTED OTHERWISE.  
IF IN DOUBT ON ANY ISSUE SEEK VERIFICATION PRIOR TO PROCEEDING.  
READ THESE DRAWINGS IN CONJUNCTION WITH ALL OTHER CONSULTANTS DRAWINGS AND SPECIFICATIONS.

REV.	DESCRIPTION	BY	DATE
C	SH1 CROSSING NOTE REVISED	MK	25-09-19
B	RC REVISION	MK	08-08-19

**GULL PARAPARAUMU**  
PROPOSED FUEL FACILITY  
3 Kapiti Road, Paraparauumu

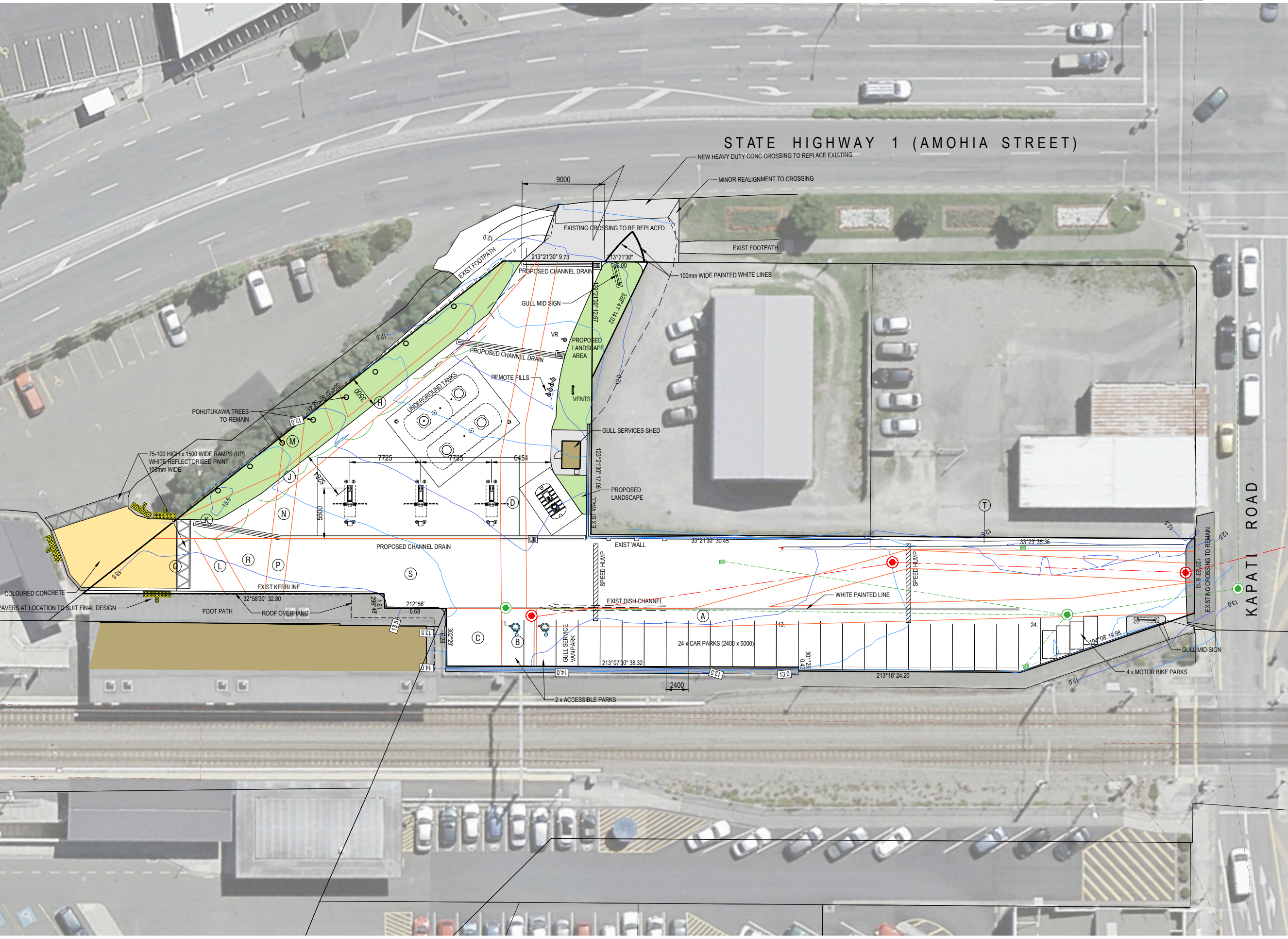
**TECHNITRADES ARCHITECTURE**  
12 Ben Lomond Crescent, Pakuranga, Auckland 2010  
Phone (09) 5767166 | design@technitrades.co.nz

Drawing: Existing Site Plan	
Drawing No. 2982-F02	Revision: C



PROPOSED AREAS TABLE - GULL PARAPARAUMU	
IMPERVIOUS (HARDSTAND)	2010 m2
LANDSCAPED (PERMEABLE)	231 m2
BUILDINGS	6 m2
<b>TOTAL SITE AREA</b>	<b>2247 m2</b>

LEGEND:	
	PROPOSED LANDSCAPE
	EXISTING VEHICLE CROSSINGS
	PROPOSED BUILDING
	EASEMENT LABEL
	PUBLIC WASTE WATER SEWER
	PUBLIC STORM WATER SEWER
	PUBLIC WASTE WATER MANHOLE
	PUBLIC STORM WATER MANHOLE
	INDICATES EXISTING CONTOURS

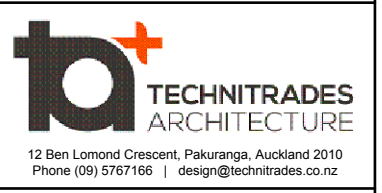


© THIS DOCUMENT IS CONFIDENTIAL. COPYRIGHT IS VESTED IN GULL NEW ZEALAND. WRITTEN CONSENT IS REQUIRED PRIOR TO REPRODUCTION.	A1 Scale:	1:200
	A3 Scale:	1:400
	Designed:	L.MEIKLEJOHN
	Drawn:	-
	A1 Plot Scale:	1:1
	A3 Plot Scale:	1:2

**NOTES**  
 DO NOT SCALE.  
 DIMENSIONS IN MILLIMETERS UNLESS NOTED OTHERWISE.  
 IF IN DOUBT ON ANY ISSUE SEEK VERIFICATION PRIOR TO PROCEEDING.  
 READ THESE DRAWINGS IN CONJUNCTION WITH ALL OTHER CONSULTANTS DRAWINGS AND SPECIFICATIONS.

REV.	DESCRIPTION	BY	DATE
E	TRAFFIC ENGINEERING REVS	MK	25-11-19
D	RAISED ENTRY REVS	MK	25-09-19
C	RC REVISION	MK	08-08-19

**GULL PARAPARAUMU**  
 PROPOSED FUEL FACILITY  
 3 Kapiti Road, Paraparaumu

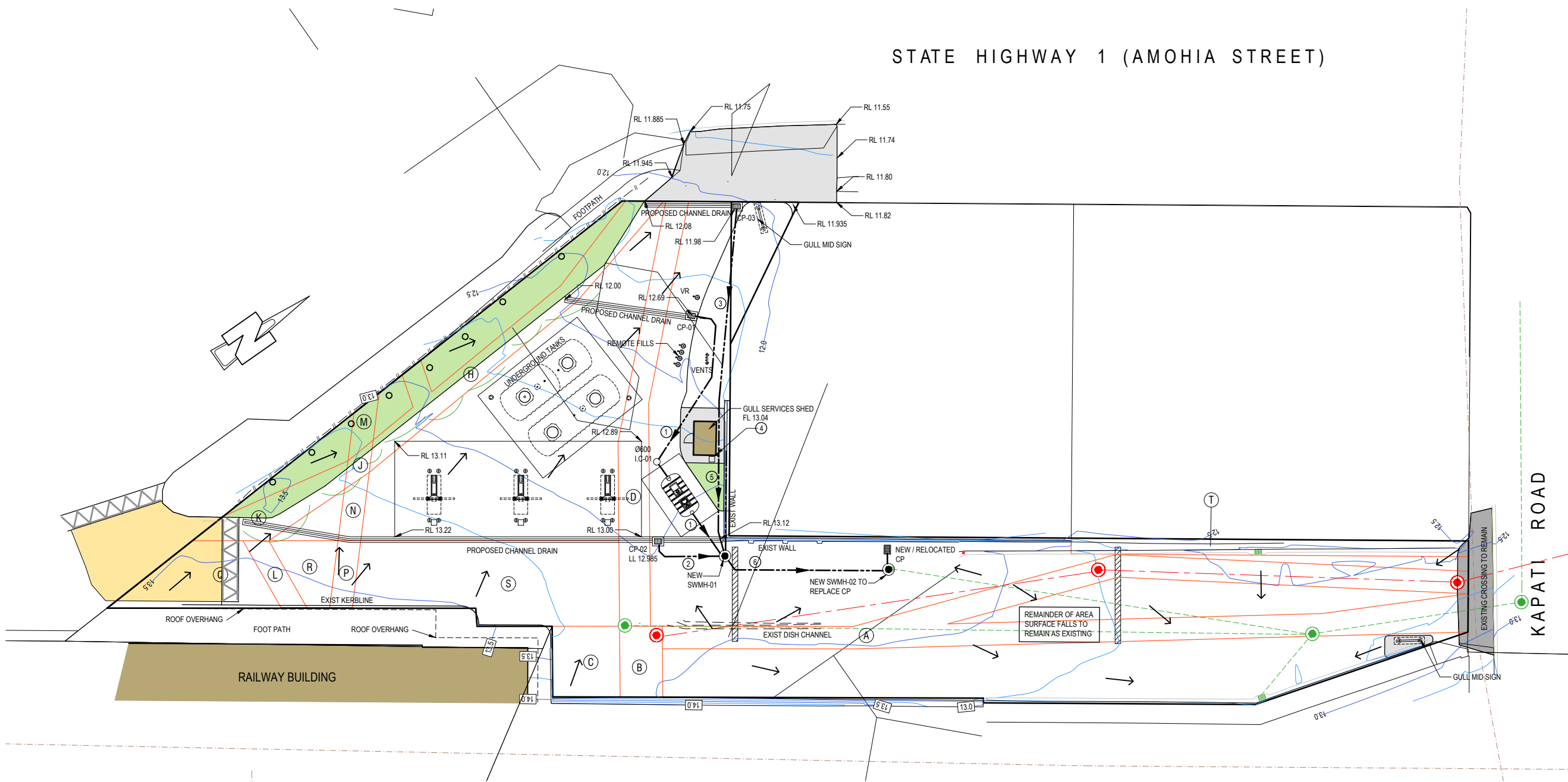


Drawing:		Proposed Site Plan
Drawing No.	2982-F03	Revision: E

LEGEND:

- PROPOSED LANDSCAPE
- EXISTING VEHICLE CROSSINGS
- PROPOSED BUILDING
- EASEMENT LABEL
- PUBLIC WASTE WATER SEWER
- PUBLIC STORM WATER SEWER
- PUBLIC WASTE WATER MANHOLE
- PUBLIC STORM WATER MANHOLE
- NEW PRIVATE STORM WATER DRAINS (REFER TO TABLE ON THIS DRAWING)
- DRAIN DIRECTION OF DRAIN FLOW
- DIRECTION OF SURFACE FALL
- INDICATES DRAIN LABELS
- MANHOLE - WASTEWATER
- MANHOLE - STORMWATER
- 12.0 INDICATES EXISTING CONTOURS

STATE HIGHWAY 1 (AMOHIA STREET)



© THIS DOCUMENT IS CONFIDENTIAL. COPYRIGHT IS VESTED IN GULL NEW ZEALAND. WRITTEN CONSENT IS REQUIRED PRIOR TO REPRODUCTION.	A1 Scale:	1:200
	A3 Scale:	1:400
	Designed:	L.MEIKLEJOHN
	Drawn:	-
	A1 Plot Scale:	1:1
	A3 Plot Scale:	1:2

**NOTES**  
DO NOT SCALE.  
DIMENSIONS IN MILLIMETERS UNLESS NOTED OTHERWISE.  
IF IN DOUBT ON ANY ISSUE SEEK VERIFICATION PRIOR TO PROCEEDING.  
READ THESE DRAWINGS IN CONJUNCTION WITH ALL OTHER CONSULTANTS DRAWINGS AND SPECIFICATIONS.

REV.	DESCRIPTION	BY	DATE
E	TRAFFIC ENGINEERING REVS	MK	20-11-20
D	RAISED ENTRY REVS	MK	25-09-19
C	RC REVISION	MK	12-08-19


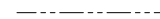


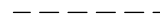








**GULL PARAPARAUMU**  
PROPOSED FUEL FACILITY  
3 Kapiti Road, Paraparaumu

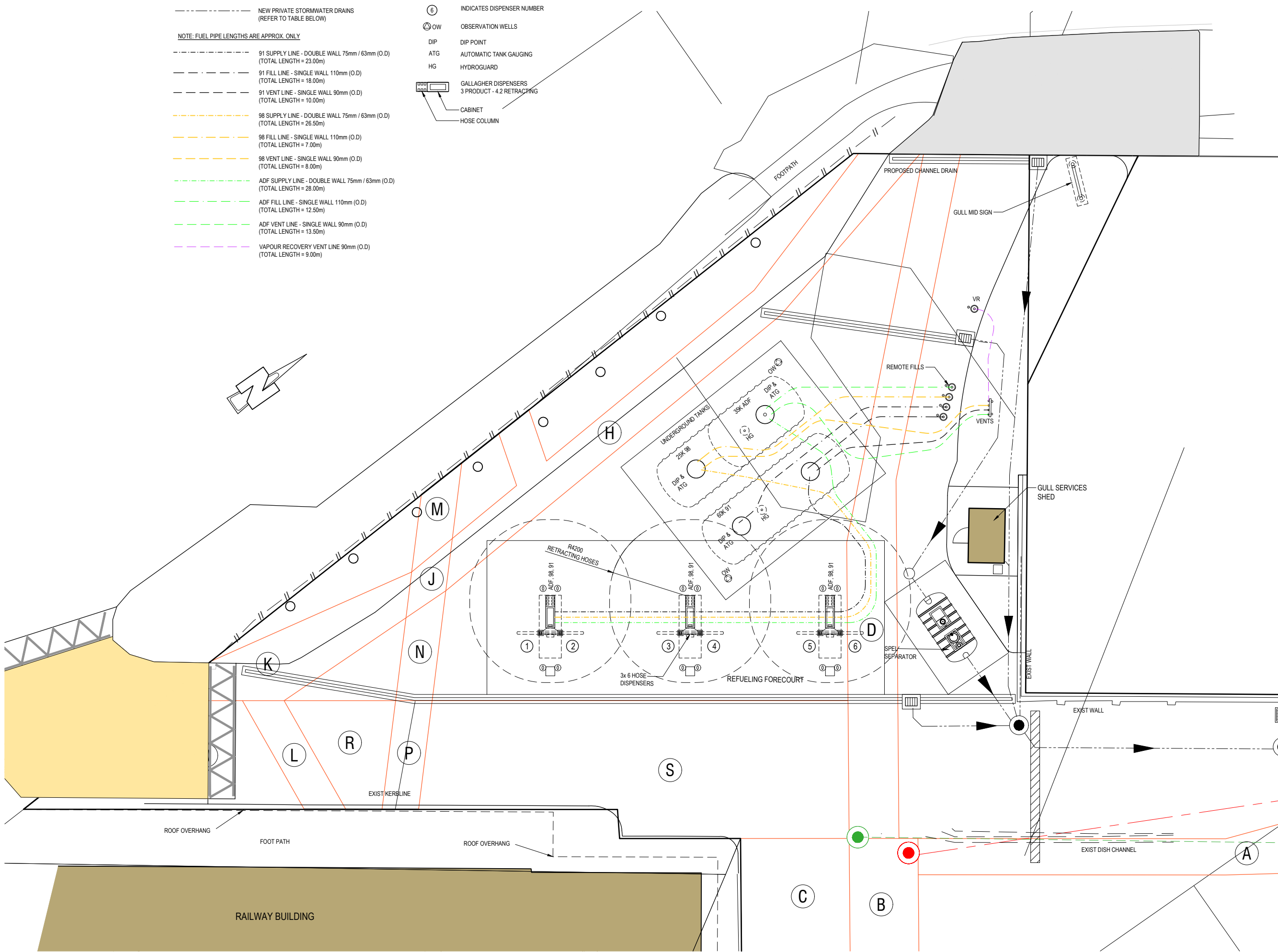
**TECHNITRADES ARCHITECTURE**  
12 Ben Lomond Crescent, Pakuranga, Auckland 2010  
Phone (09) 5767166 | design@technitrades.co.nz

Drawing:  
**Proposed Drainage & Levels Plan**

Drawing No.	Revision.
<b>2982-F04</b>	<b>E</b>

LEGEND:

-  EXISTING PUBLIC STORMWATER SEWER
  -  NEW PRIVATE STORMWATER DRAINS (REFER TO TABLE BELOW)
  - NOTE: FUEL PIPE LENGTHS ARE APPROX. ONLY**
  -  91 SUPPLY LINE - DOUBLE WALL 75mm / 63mm (O.D) (TOTAL LENGTH = 23.00m)
  -  91 FILL LINE - SINGLE WALL 110mm (O.D) (TOTAL LENGTH = 18.00m)
  -  91 VENT LINE - SINGLE WALL 90mm (O.D) (TOTAL LENGTH = 10.00m)
  -  98 SUPPLY LINE - DOUBLE WALL 75mm / 63mm (O.D) (TOTAL LENGTH = 26.50m)
  -  98 FILL LINE - SINGLE WALL 110mm (O.D) (TOTAL LENGTH = 7.00m)
  -  98 VENT LINE - SINGLE WALL 90mm (O.D) (TOTAL LENGTH = 8.00m)
  -  ADF SUPPLY LINE - DOUBLE WALL 75mm / 63mm (O.D) (TOTAL LENGTH = 28.00m)
  -  ADF FILL LINE - SINGLE WALL 110mm (O.D) (TOTAL LENGTH = 12.50m)
  -  ADF VENT LINE - SINGLE WALL 90mm (O.D) (TOTAL LENGTH = 13.50m)
  -  VAPOUR RECOVERY VENT LINE 90mm (O.D) (TOTAL LENGTH = 9.00m)
- ADF, 98, 91 FUEL TYPE ORDER - ON HOSE STACK
  - ⑥ INDICATES DISPENSER NUMBER
  - ⊙ OW OBSERVATION WELLS
  - DIP DIP POINT
  - ATG AUTOMATIC TANK GAUGING
  - HG HYDROGUARD
  -  GALLAGHER DISPENSERS 3 PRODUCT - 4.2 RETRACTING
  - CABINET
  - HOSE COLUMN



© THIS DOCUMENT IS CONFIDENTIAL. COPYRIGHT IS VESTED IN GULL NEW ZEALAND. WRITTEN CONSENT IS REQUIRED PRIOR TO REPRODUCTION.	A1 Scale:	1:100
	A3 Scale:	1:200
	Designed:	L.MEIKLEJOHN
	Drawn:	-
	A1 Plot Scale:	1:1
	A3 Plot Scale:	1:2

**NOTES**  
DO NOT SCALE.  
DIMENSIONS IN MILLIMETERS UNLESS NOTED OTHERWISE.  
IF IN DOUBT ON ANY ISSUE SEEK VERIFICATION PRIOR TO PROCEEDING.  
READ THESE DRAWINGS IN CONJUNCTION WITH ALL OTHER CONSULTANTS DRAWINGS AND SPECIFICATIONS.

REV.	DESCRIPTION	BY	DATE
E	TRAFFIC ENGINEERING REVS	MK	20-11-19
D	RAISED ENTRY REVS	MK	25-09-19
C	RC REVISION	MK	12-08-19

**GULL PARAPARAUMU**  
PROPOSED FUEL FACILITY  
3 KAPITI ROAD, PARAPARAUMU



Drawing No. <b>2982-F05</b>		Revision. <b>E</b>
-----------------------------	--	--------------------

**NOTES**

- THIS IS A GROUND LEVEL EXPLOSIVE ATMOSPHERE AREAS DRAWING. FOR EXAMPLE, THE HEIGHT OF FUEL DISPENSER ZONE 1 AREA IS 0.25m ABOVE GROUND LEVEL.
- FOR OTHER ELEVATIONS OF EXPLOSIVE ATMOSPHERE AREAS, REFER TO AS/NZS 60079.10.1.2009
- DUCTS AND WIRING ENCLOSURES BELOW EXPLOSIVE ATMOSPHERE AREAS ARE ZONE 1. ULLAGE SPACE IN TANKS ARE ZONE 0.
- AREA CLASSIFICATION DOES NOT INCLUDE FOR CATASTROPHIC FAILURES SUCH AS VESSEL RUPTURE, MAJOR SPILLS ETC.
- MOTOR SPIRIT VENTS INCLUDE AN EXPLOSIVE ATMOSPHERE ZONE1 AT OUTLET FOR A 1.5m SPHERE.

**FUELS STORED AND DISPENSED ON BP RETAIL SITES**

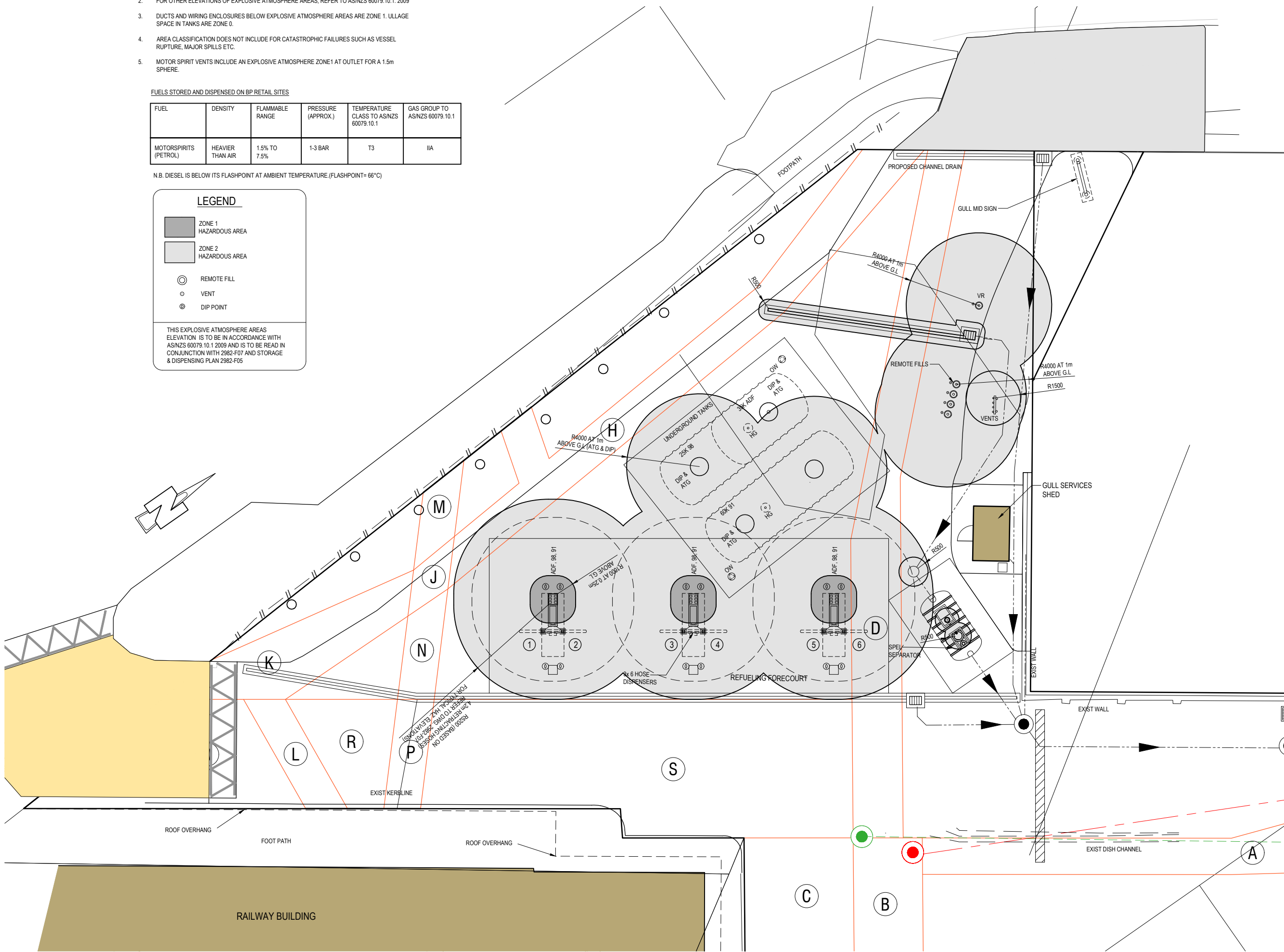
FUEL	DENSITY	FLAMMABLE RANGE	PRESSURE (APPROX.)	TEMPERATURE CLASS TO AS/NZS 60079.10.1	GAS GROUP TO AS/NZS 60079.10.1
MOTORSPIRITS (PETROL)	HEAVIER THAN AIR	1.5% TO 7.5%	1-3 BAR	T3	IIA

N.B. DIESEL IS BELOW ITS FLASHPOINT AT AMBIENT TEMPERATURE. (FLASHPOINT= 66°C)

**LEGEND**

- ZONE 1 HAZARDOUS AREA
- ZONE 2 HAZARDOUS AREA
- REMOTE FILL
- VENT
- DIP POINT

THIS EXPLOSIVE ATMOSPHERE AREAS ELEVATION IS TO BE IN ACCORDANCE WITH AS/NZS 60079.10.1.2009 AND IS TO BE READ IN CONJUNCTION WITH 2982-F07 AND STORAGE & DISPENSING PLAN 2982-F05



© THIS DOCUMENT IS CONFIDENTIAL. COPYRIGHT IS VESTED IN GULL NEW ZEALAND. WRITTEN CONSENT IS REQUIRED PRIOR TO REPRODUCTION.	A1 Scale:	1:100
	A3 Scale:	1:200
	Designed:	L.MEIKLEJOHN
	Drawn:	-
	A1 Plot Scale:	1:1
	A3 Plot Scale:	1:2

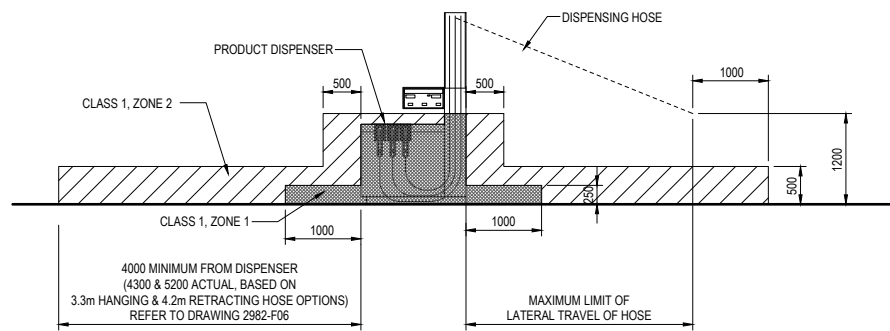
**NOTES**  
DO NOT SCALE.  
DIMENSIONS IN MILLIMETERS UNLESS NOTED OTHERWISE.  
IF IN DOUBT ON ANY ISSUE SEEK VERIFICATION PRIOR TO PROCEEDING.  
READ THESE DRAWINGS IN CONJUNCTION WITH ALL OTHER CONSULTANTS DRAWINGS AND SPECIFICATIONS.

REV.	DESCRIPTION	BY	DATE
E	TRAFFIC ENGINEERING REVS	MK	20-11-19
D	RAISED ENTRY REVS	MK	25-09-19
C	RC REVISION	MK	12-08-19

**GULL PARAPARAUMU**  
PROPOSED FUEL FACILITY  
3 Kaiti Road, Paraparauamu



Drawing No. <b>2982-F06</b>		Revision <b>E</b>
-----------------------------	--	-------------------



**EXTERIOR OF PETROL DISPENSING UNITS**

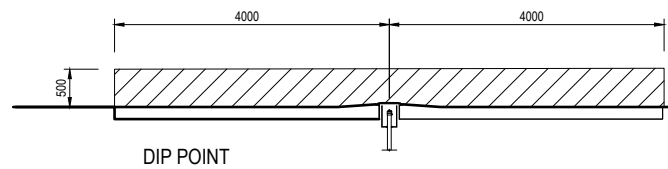
SCALE: NTS

ZONE CLASSIFICATION: ZA.4.4.2.2  
EXTERIOR OF PETROL DISPENSING UNITS IN ADEQUATELY VENTILATED LOCATIONS.

ZONE 1:  
a) WITHIN 0.05M ABOVE AND 0.1M BELOW THE DISPENSER NOZZLE SPOUT HOUSING AND EXTENDING 0.1M LATERALLY FROM THE DISPENSER HOUSING.  
b) FOR DISPENSERS MOUNTED AT OR NEAR GROUND LEVEL, THE AREA WITHIN THE SPACE 0.25M ABOVE THE BASE OF THE DISPENSING EQUIPMENT AND EXTENDING 1.0M IN ALL DIRECTIONS HORIZONTALLY FROM THE DISPENSING UNIT.

ZONE 2:  
c) WITHIN THE SPACE 0.5M LATERALLY OF THE DISPENSING EQUIPMENT TO A HEIGHT OF 1.2M ABOVE THE BASE OF THE DISPENSER.  
d) WITHIN THE SPACE 0.5M ABOVE THE DRIVEWAY OR GROUND LEVEL AND EXTENDING 4.0M IN ALL DIRECTIONS HORIZONTALLY FROM THE DISPENSING UNIT OR 1.0M FROM THE HOSE NOZZLE, WHICHEVER IS THE GREATER.

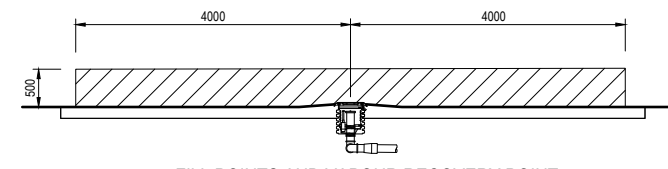
THE DISTANCE OF 1.0M SPECIFIED IN D) IS TAKEN FROM THE END OF THE HOSE NOZZLE HEAD AT A HEIGHT OF 1.2M, AT ITS MAXIMUM LATERAL DISTANCE OF TRAVEL FROM THE DISPENSER UNIT IN ANY DIRECTION.



DIP POINT

ZONE CLASSIFICATION: AS/NZS60079.10.1:2009 CLAUSE ZA.4.4.2.5  
FILL, VENT AND OTHER PIPES FOR UNDERGROUND PETROL TANKS

ZONE 1:  
a) WITHIN 1.5M RADIUS IN ALL DIRECTIONS FROM VENT PIPE OUTLET  
ZONE 2:  
b) WITHIN CYLINDRICAL VOLUME BELOW THE ZONE 1 SPHERICAL VOLUME.  
ZONE 2:  
c) WITHIN THE SPACE FROM GROUND LEVEL TO 0.5M ABOVE AND 3.0M LATERALLY FROM ANY FILL PIPE OR DIP PIPE OPENING.

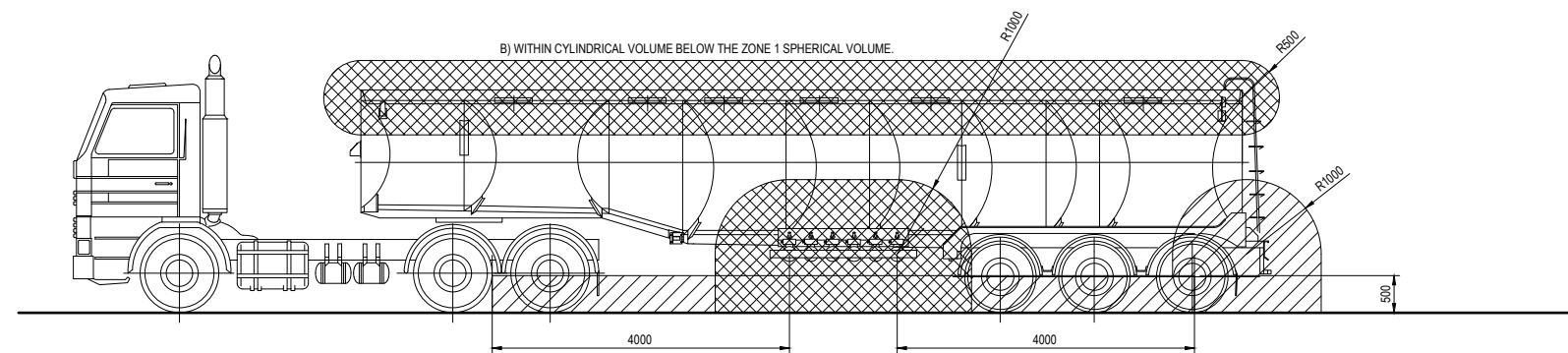


FILL POINTS AND VAPOUR RECOVERY POINT

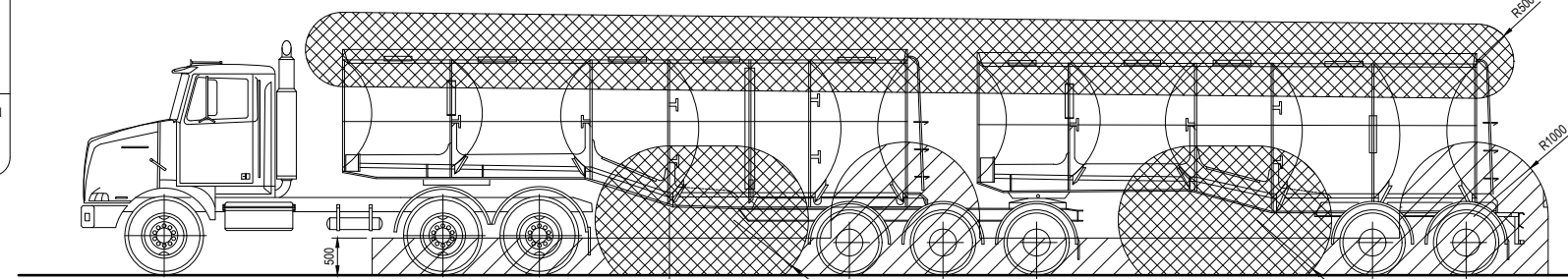
NOTE:  
ALLOWANCES SHOULD BE MADE FOR POSSIBLE VARIATIONS IN TANKER POSITIONS.  
INTERPRETATION:  
THE RADIUS OF 1.5M IN a) & b) IS TAKEN FROM THE OUTER EDGE OF THE VENT PIPE. THE DISTANCE OF 0.5M SPECIFIED IN c) IS TAKEN FROM THE EDGE OF OPENINGS (EG, RIM OF DIP OR FILL POINT)

**FILL, VENT, VAPOUR RECOVERY AND OTHER PIPES FOR UNDERGROUND PETROL TANKS**

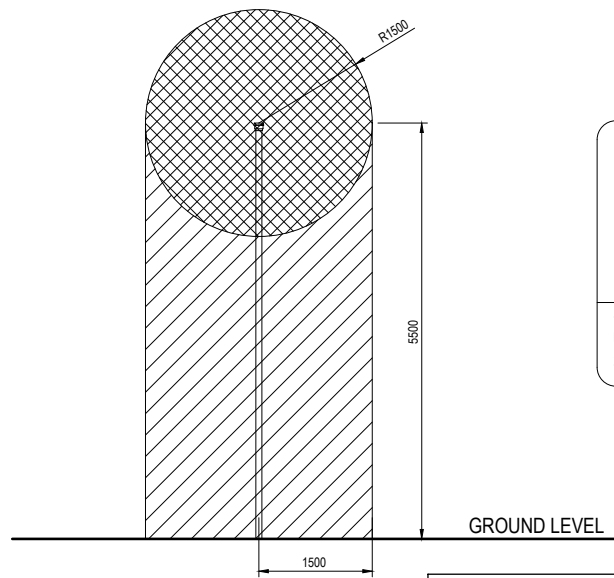
SCALE: NTS



SEMI ROAD TANKER WITH OR WITHOUT VAPOUR RECOVERY  
ROAD OR RAIL TANKER, DISCHARGE WITH OR WITHOUT VAPOUR RECOVERY: ZA.5.2.6.3



B-TRAIN ROAD TANKER WITH OR WITHOUT VAPOUR RECOVERY  
ROAD OR RAIL TANKER, DISCHARGE WITH OR WITHOUT VAPOUR RECOVERY: ZA.5.2.6.3



TANK VENT PIPE

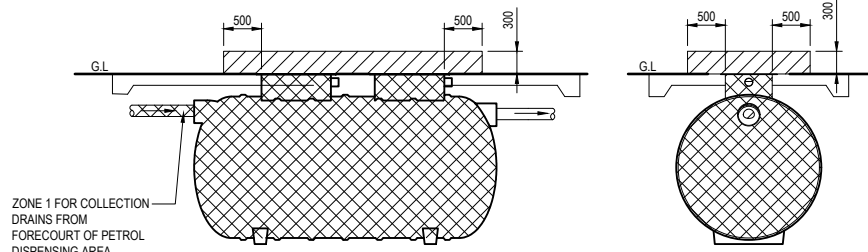
SCALE: NTS

CLAUSE: 2A.4.4.2.5

**LEGEND**

ZONE 1 HAZARDOUS AREA  
 ZONE 2 HAZARDOUS AREA

THIS EXPLOSIVE ATMOSPHERE AREAS ELEVATION IS TO BE IN ACCORDANCE WITH AS/NZS 60079.10.1 2009 AND IS TO BE READ IN CONJUNCTION WITH THE PLAN DRAWING 2982-F06



SPEL PURCEPTOR SEPARATOR - P020 "CLASS 1"

SEPARATOR VENT & FORECOURT CESSPIT HAZARDOUS AREAS HAVE SAME DIMENSIONS  
SCALE: NTS

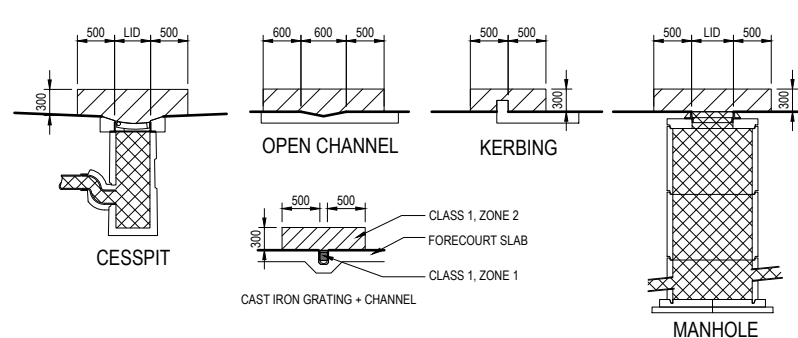
CONTAMINATED SURFACE RUNOFF CONTAINMENT AND TREATMENT FEATURES.

ZONE CLASSIFICATION: 2A.4.5.4  
WASTE COLLECTION STORAGE VESSELS, DRAINS, SUMPS OR PITS

ZONE 1:  
A) THE AREA WITHIN COLLECTION DRAINS, SUMPS AND PITS LOCATED ON THE FORECOURT OF THE PETROL DISPENSING AREA.

ZONE 2:  
B) THE AREA WITHIN 0.3M VERTICAL AND 0.5M LATERAL FROM OPENINGS OF COLLECTION STORAGE VESSEL, DRAINS, SUMPS OR PITS.

ZONE 1:  
C) INTERIOR OF COLLECTION STORAGE VESSEL



INTERPRETATION:  
THE ABOVE ZONING ALSO APPLIES TO ALL CONTAMINATED STORMWATER CONTAINMENT/TREATMENT FEATURES. THIS INCLUDES AREAS WITHIN A WASTEWATER TREATMENT UNIT AS WELL AS ALL PIPING LEADING TO IT.

THE DISTANCE OF 0.5M SPECIFIED IN B) IS TAKEN FROM THE EDGE OF OPENINGS (EG: RIM OF MANHOLE LID, CESSPIT LID) OR 0.5M BEYOND THE EDGES OF CONTAINED SURFACE FLOWS (EG: OPEN CHANNELS, ACO DRAINS, KERBING ETC)

**CONTAMINATED SURFACE RUNOFF CONTAINMENT**

SCALE: NTS



© THIS DOCUMENT IS CONFIDENTIAL. COPYRIGHT IS VESTED IN TECHNITRADES ARCHITECTURE LTD. WRITTEN CONSENT IS REQUIRED PRIOR TO REPRODUCTION.	A1 Scale.	N.T.S
	A3 Scale.	N.T.S
	Designed.	L.MEIKLEJOHN
	Drawn.	B.MILLWARD
	A1 Plot Scale.	1:1
	A3 Plot Scale.	1:2

**NOTES**

DO NOT SCALE.

DIMENSIONS IN MILLIMETERS UNLESS NOTED OTHERWISE.

IF IN DOUBT ON ANY ISSUE SEEK VERIFICATION PRIOR TO PROCEEDING.

READ THESE DRAWINGS IN CONJUNCTION WITH ALL OTHER CONSULTANTS DRAWINGS AND SPECIFICATIONS.

A	PRELIMINARY RESOURCE CONSENT ISSUE	BM	12-06-18
REV.	DESCRIPTION	BY	DATE




Project:  
**GULL PARAPARAMU**  
PROPOSED DEVELOPMENT  
3 Kapiti Road, Paraparamu



Drawing:  
**Proposed Explosive Atmosphere Areas Elevations**

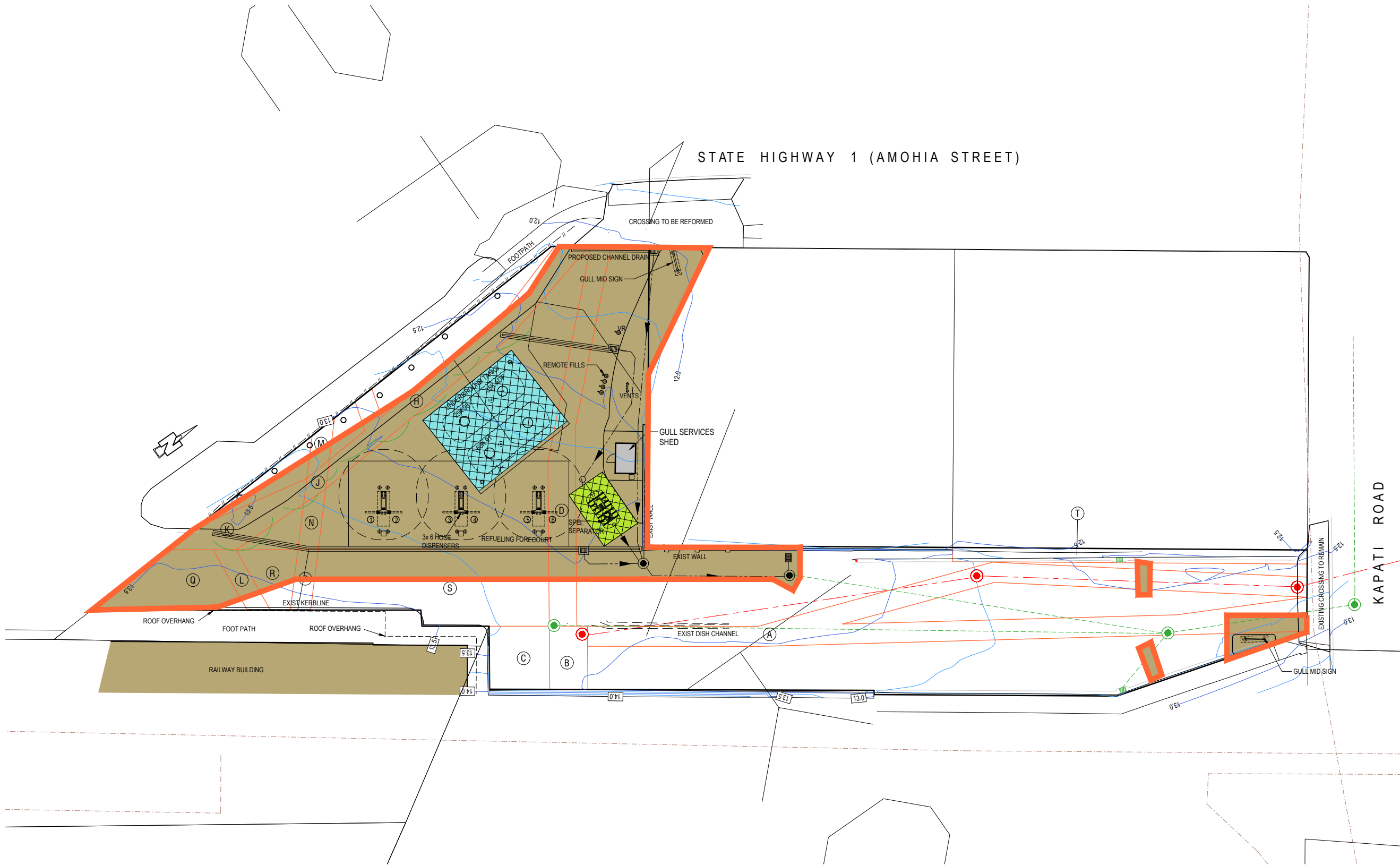
Drawing No.	Revision.
<b>2982-F07</b>	<b>A</b>

**LEGEND:**

-  EXISTING CONTOUR LINES
-  EXTENT OF PROPOSED EXCAVATION OVER 1.2m DEEP
-  EXTENT OF SITE AFFECTED BY EARTHWORKS = 1065m<sup>2</sup>

**CUT AND FILL LEGEND:**

AREA LABEL	DESCRIPTION	APPROX. CUT VOLUME (m <sup>3</sup> )	APPROX. FILL VOLUME (m <sup>3</sup> )
	TOTAL VOLUME OF EARTHWORKS REQUIRED FOR THE PROPOSED UNDERGROUND SPEL PURCEPTOR SEPARATOR (TOTAL AREA = 25m <sup>2</sup> )	70	16
	TOTAL VOLUME OF EARTHWORKS REQUIRED FOR THE PROPOSED UNDERGROUND TANKS (TOTAL AREA = 101m <sup>2</sup> )	383	137
	TOTAL VOLUME OF MATERIAL TO BE REMOVED FROM THE SITE ASSOCIATED WITH ALL OTHER EARTHWORKS (TOTAL AREA = 845m <sup>2</sup> ) (AREA IS EXCLUDING UNDERGROUND TANKS AND SPEL SEPARATOR)	211	126
<b>TOTALS :</b>		<b>664</b>	<b>279</b>

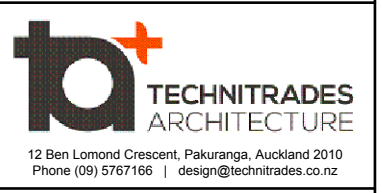


© THIS DOCUMENT IS CONFIDENTIAL. COPYRIGHT IS VESTED IN GULL NEW ZEALAND. WRITTEN CONSENT IS REQUIRED PRIOR TO REPRODUCTION.	A1 Scale.	1:200
	A3 Scale.	1:400
	Designed.	L.MEIKLEJOHN
	Drawn.	-
	A1 Plot Scale.	1:1
	A3 Plot Scale.	1:2

**NOTES**  
DO NOT SCALE.  
DIMENSIONS IN MILLIMETERS UNLESS NOTED OTHERWISE.  
IF IN DOUBT ON ANY ISSUE SEEK VERIFICATION PRIOR TO PROCEEDING.  
READ THESE DRAWINGS IN CONJUNCTION WITH ALL OTHER CONSULTANTS DRAWINGS AND SPECIFICATIONS.

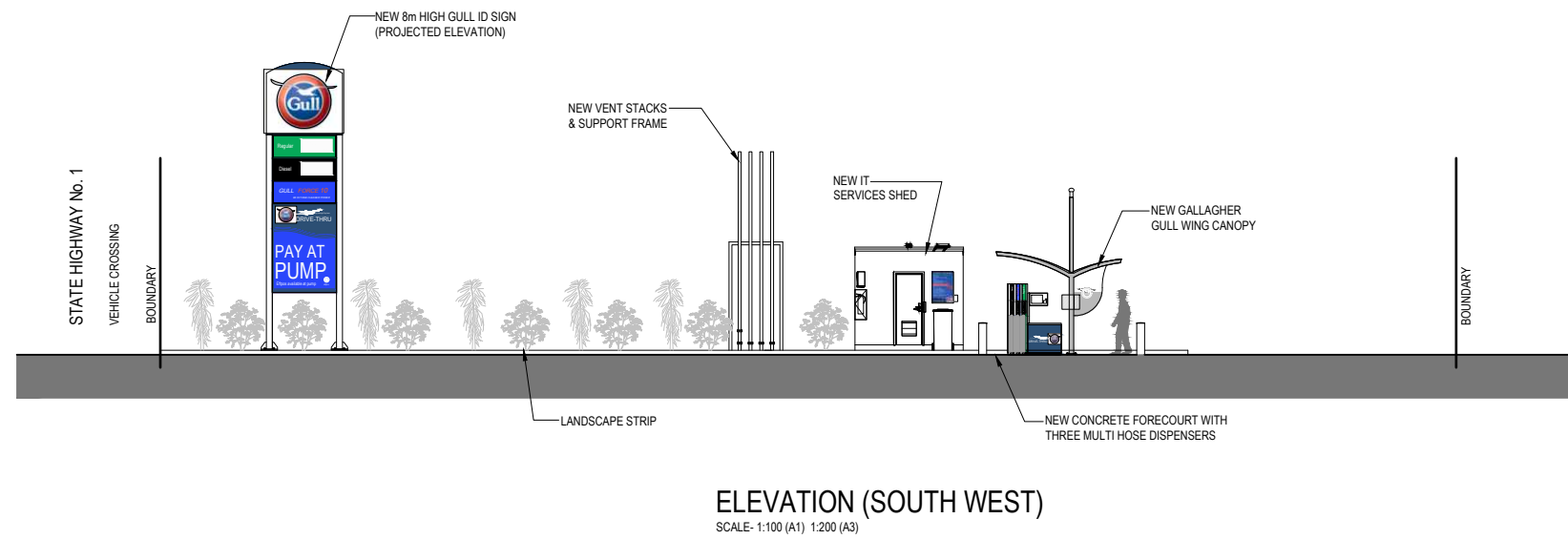
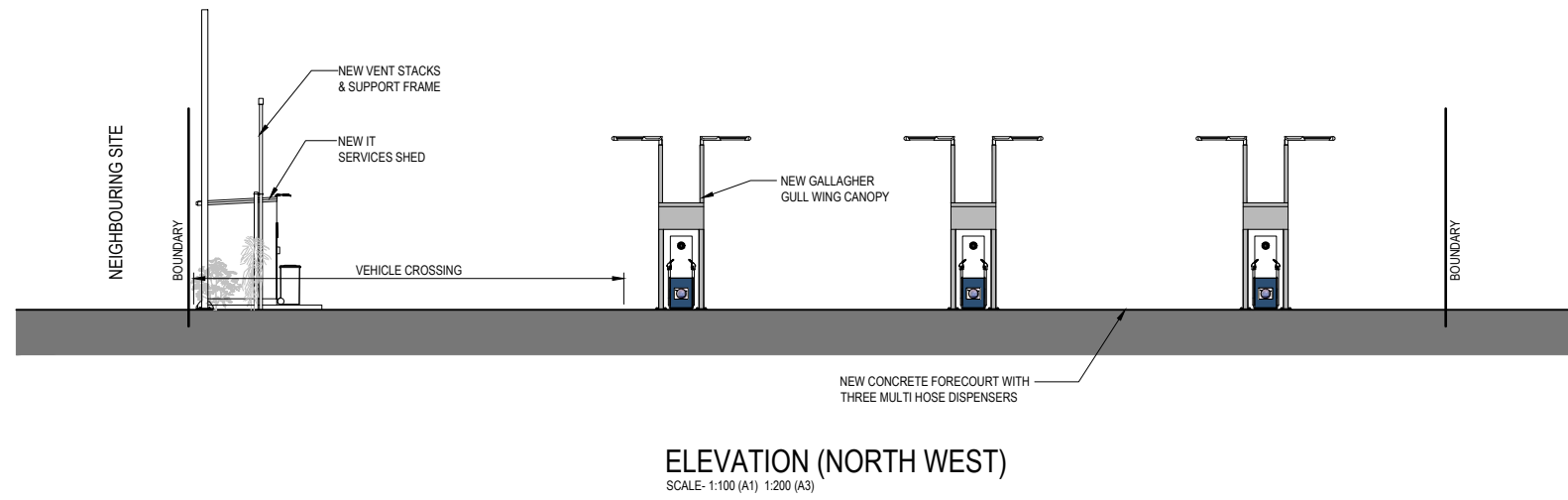
REV.	DESCRIPTION	BY	DATE
D	RAISED ENTRY REVS	MK	25-09-19
C	RC REVISION	MK	08-08-19

**GULL PARAPARAUMU**  
PROPOSED FUEL FACILITY  
3 Kapati Road, Paraparaumu



Drawing No. <b>2982-F08</b>		Revision. <b>D</b>
-----------------------------	--	--------------------





© THIS DOCUMENT IS CONFIDENTIAL. COPYRIGHT IS VESTED IN TECHNITRADES ARCHITECTURE LTD. WRITTEN CONSENT IS REQUIRED PRIOR TO REPRODUCTION	A1 Scale.	1:100
	A3 Scale.	1:200
	Designed.	L.MEIKLEJOHN
	Drawn.	B.MILLWARD
	A1 Plot Scale.	1:1
	A3 Plot Scale.	1:2

**NOTES**

DO NOT SCALE.  
DIMENSIONS IN MILLIMETERS UNLESS NOTED OTHERWISE.  
IF IN DOUBT ON ANY ISSUE SEEK VERIFICATION PRIOR TO PROCEEDING.  
READ THESE DRAWINGS IN CONJUNCTION WITH ALL OTHER CONSULTANTS DRAWINGS AND SPECIFICATIONS.

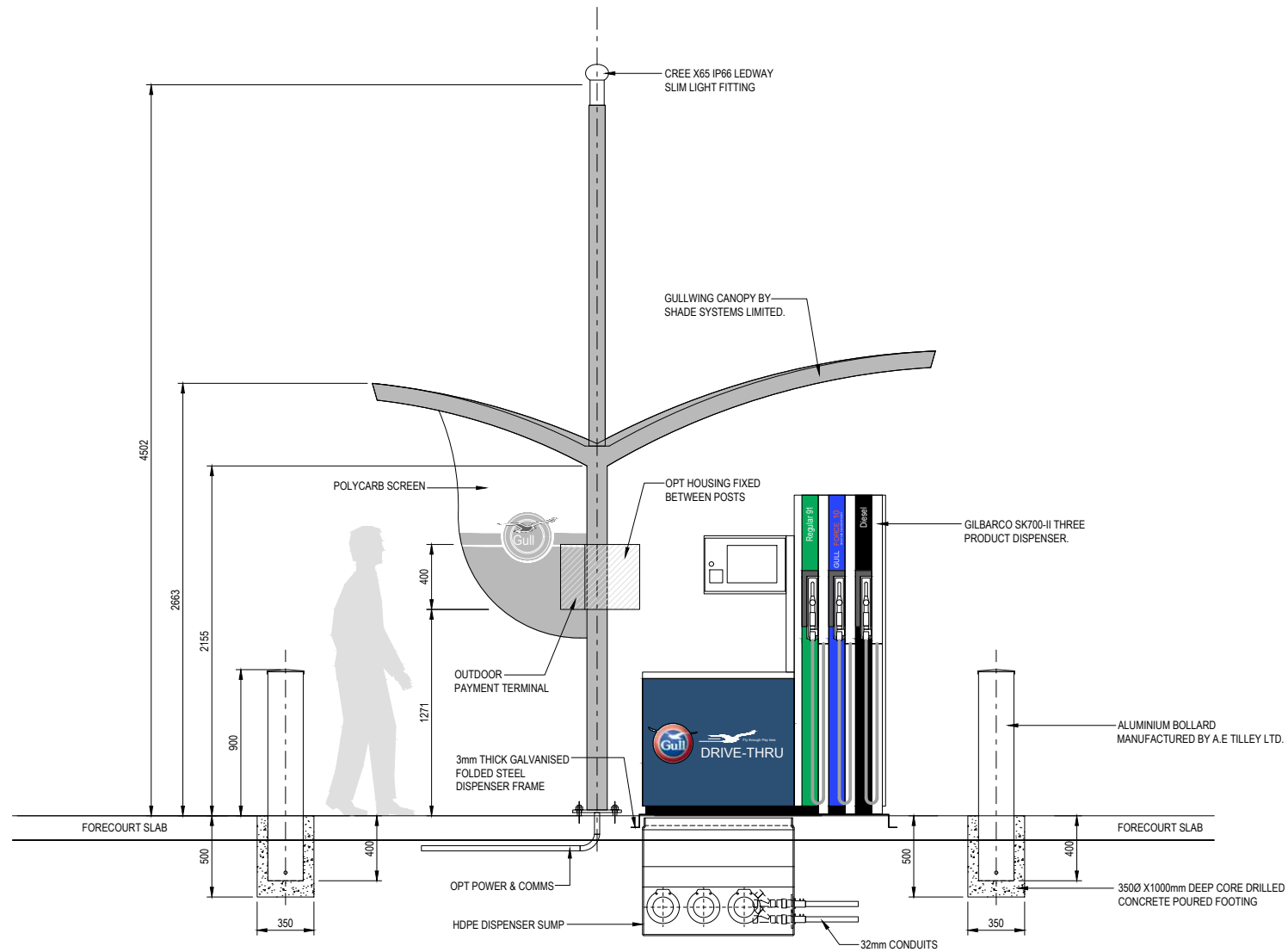
A	PRELIMINARY RESOURCE CONSENT ISSUE	BM	12-06-18
REV.	DESCRIPTION	BY	DATE

Project:  
**GULL PARAPARAUMU**  
PROPOSED DEVELOPMENT  
3 Kapiti Road, Paraparaumu

**ta+ TECHNITRADES ARCHITECTURE**  
12 Ben Lomond Crescent, Pakuranga, Auckland 2010  
Phone (09) 5767166 | design@technitrades.co.nz

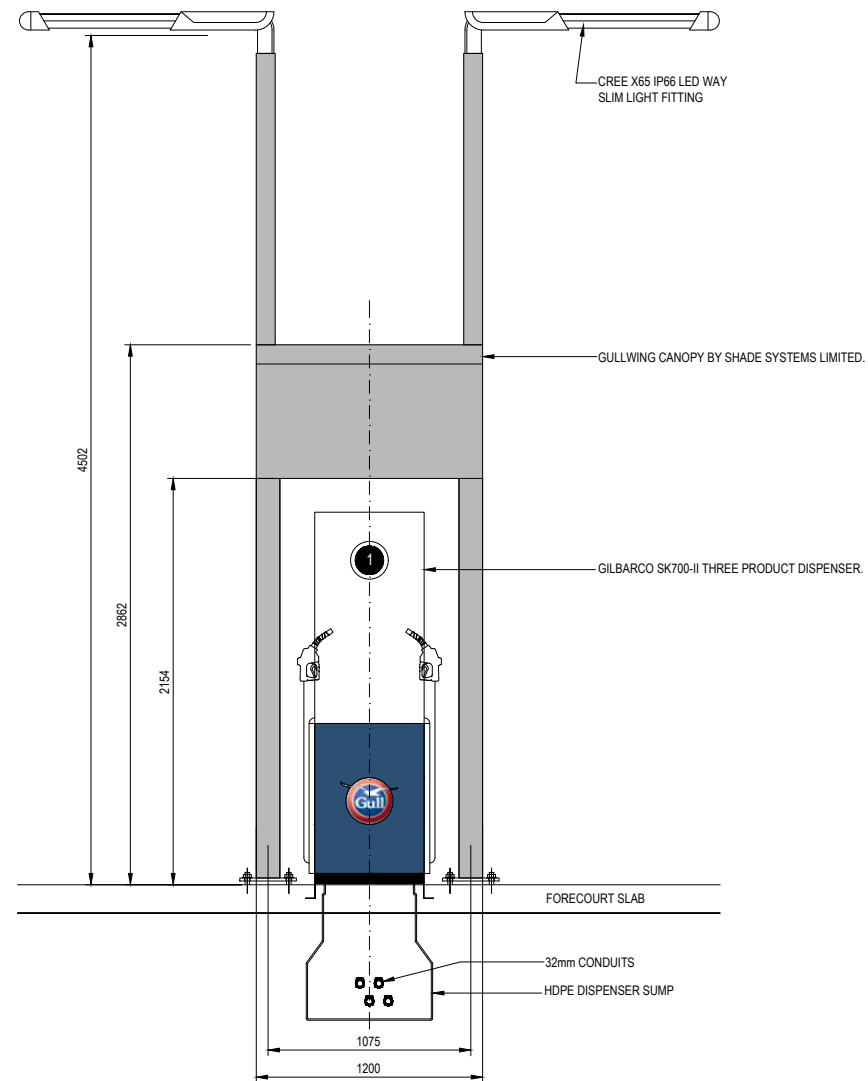
Drawing:  
Proposed Long Elevations

Drawing No.	2982-F09	Revision.	A
-------------	----------	-----------	---



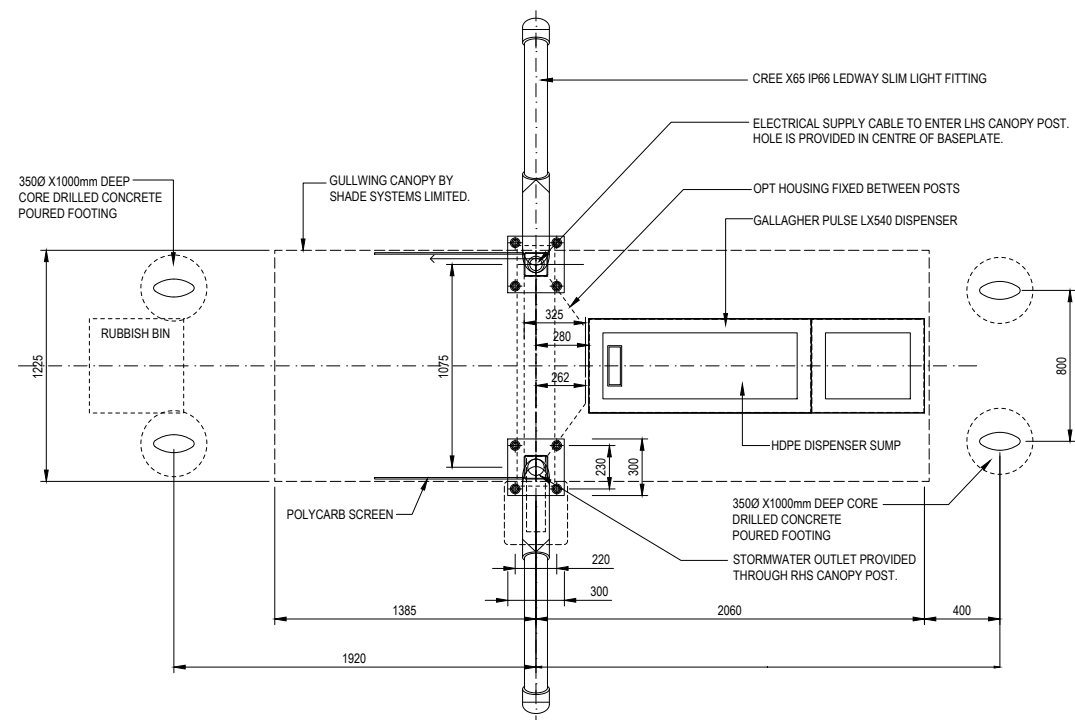
**GULL DISPENSER FRONT ELEVATION (GALLAGHER)**

SCALE- 1:20 (A1) 1:40 (A3)



**GULL DISPENSER END ELEVATION (GALLAGHER)**

SCALE- 1:20 (A1) 1:40 (A3)



**GULL DISPENSER PLAN (GALLAGHER)**

SCALE- 1:20 (A1) 1:40 (A3)



© THIS DOCUMENT IS CONFIDENTAL. COPYRIGHT IS VESTED IN TECHNITRADES ARCHITECTURE LTD. WRITTEN CONSENT IS REQUIRED PRIOR TO REPRODUCTION.	A1 Scale.	1:20
	A3 Scale.	1:40
	Designed.	L.MEIKLEJOHN
	Drawn.	B.MILLWARD
	A1 Plot Scale.	1:1
	A3 Plot Scale.	1:2

**NOTES**

DO NOT SCALE.  
 DIMENSIONS IN MILLIMETERS UNLESS NOTED OTHERWISE.  
 IF IN DOUBT ON ANY ISSUE SEEK VERIFICATION PRIOR TO PROCEEDING.  
 READ THESE DRAWINGS IN CONJUNCTION WITH ALL OTHER CONSULTANTS DRAWINGS AND SPECIFICATIONS.

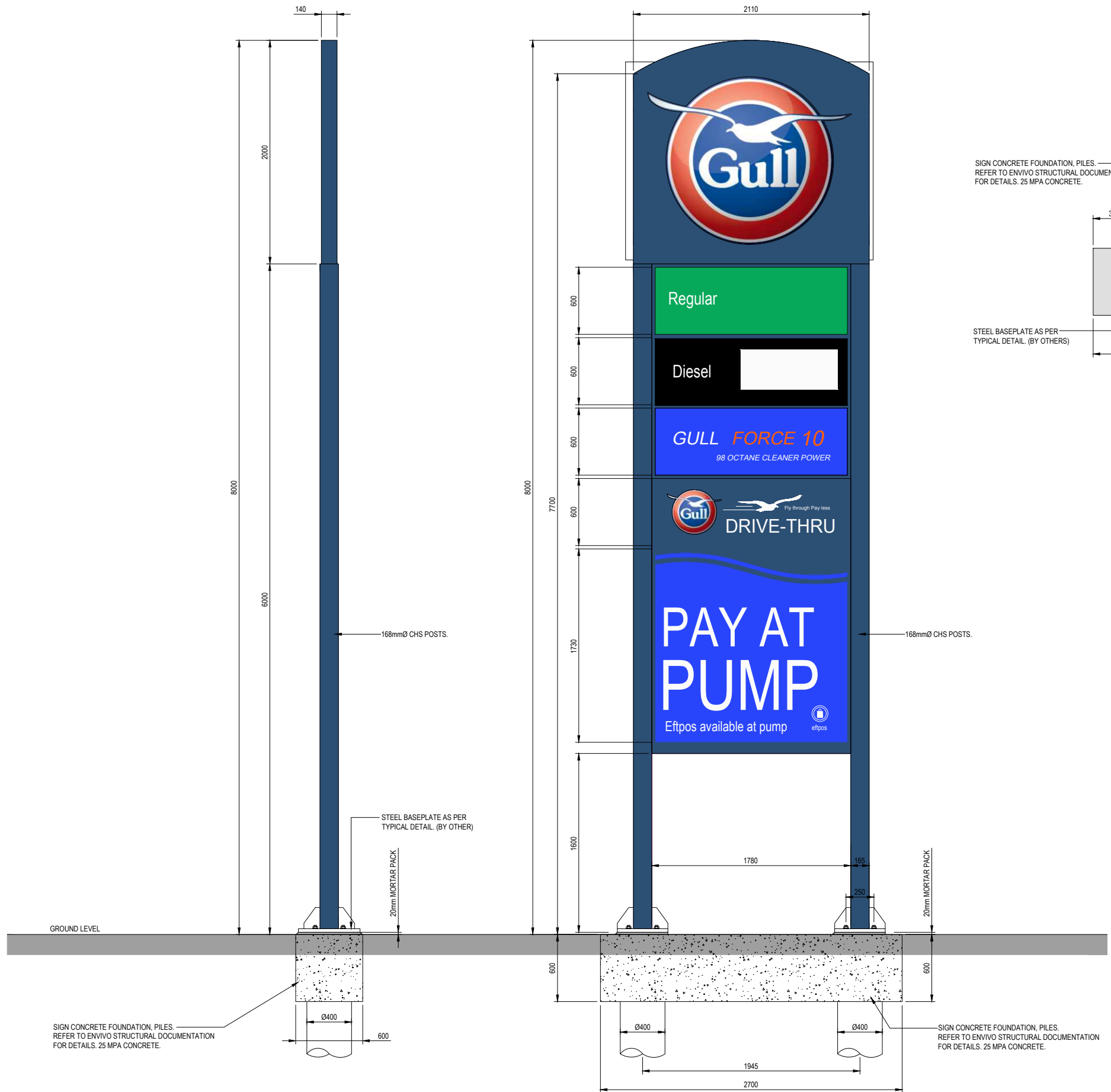
REV.	DESCRIPTION	BY	DATE
A	PRELIMINARY RESOURCE CONSENT ISSUE	BM	12-06-18

Project:  
**GULL PARAPARAUMU**  
 PROPOSED DEVELOPMENT  
 3 Kapiti Road, Paraparumu



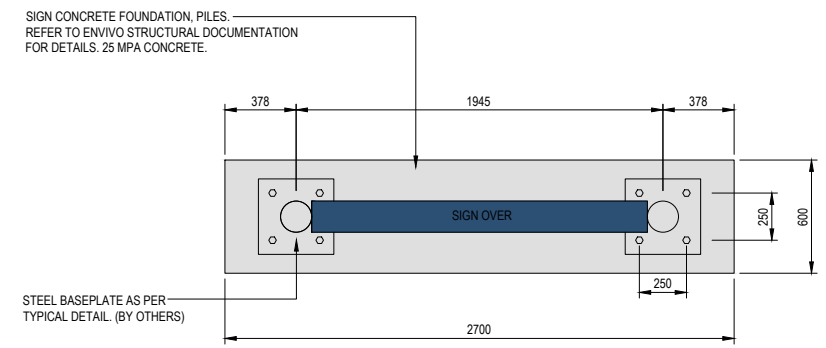
Drawing:  
**Dispenser & Gull Wing Canopy Plan & Elevations**

Drawing No.	Revision.
<b>2982-F10</b>	<b>A</b>



**ID SIDE ELEVATION**  
SCALE: 1:20 (A1) 1:40 (A3)

**ID FRONT ELEVATION**  
SCALE: 1:20 (A1) 1:40 (A3)



**ID SIGN PLAN**  
SCALE: 1:20 (A1) 1:40 (A3)



© THIS DOCUMENT IS CONFIDENTIAL. COPYRIGHT IS VESTED IN TECHNITRADES ARCHITECTURE LTD. WRITTEN CONSENT IS REQUIRED PRIOR TO REPRODUCTION.	A1 Scale.	1:20
	A3 Scale.	1:40
	Designed.	L.MEIKLEJOHN
	Drawn.	B.MILLWARD
	A1 Plot Scale.	1:1
	A3 Plot Scale.	1:2

**NOTES**

DO NOT SCALE.

DIMENSIONS IN MILLIMETERS UNLESS NOTED OTHERWISE.

IF IN DOUBT ON ANY ISSUE SEEK VERIFICATION PRIOR TO PROCEEDING.

READ THESE DRAWINGS IN CONJUNCTION WITH ALL OTHER CONSULTANTS DRAWINGS AND SPECIFICATIONS.

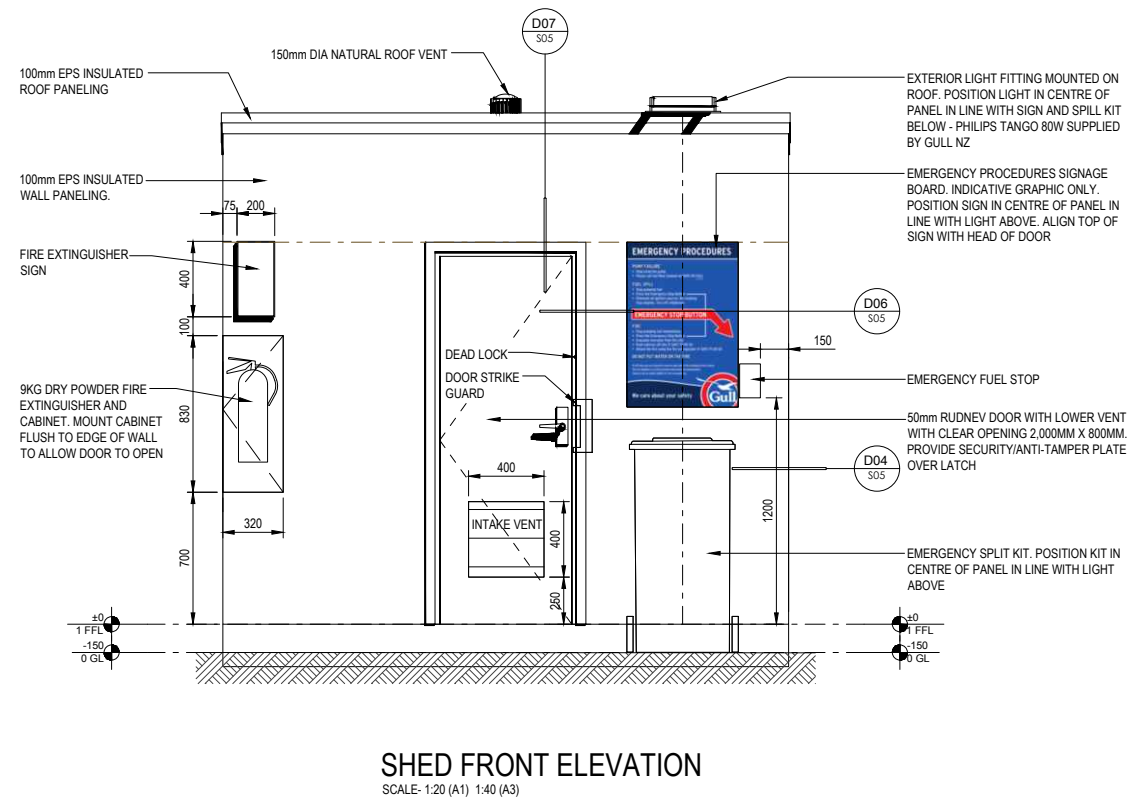
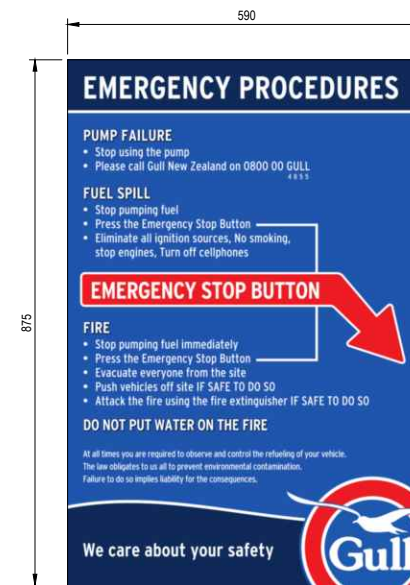
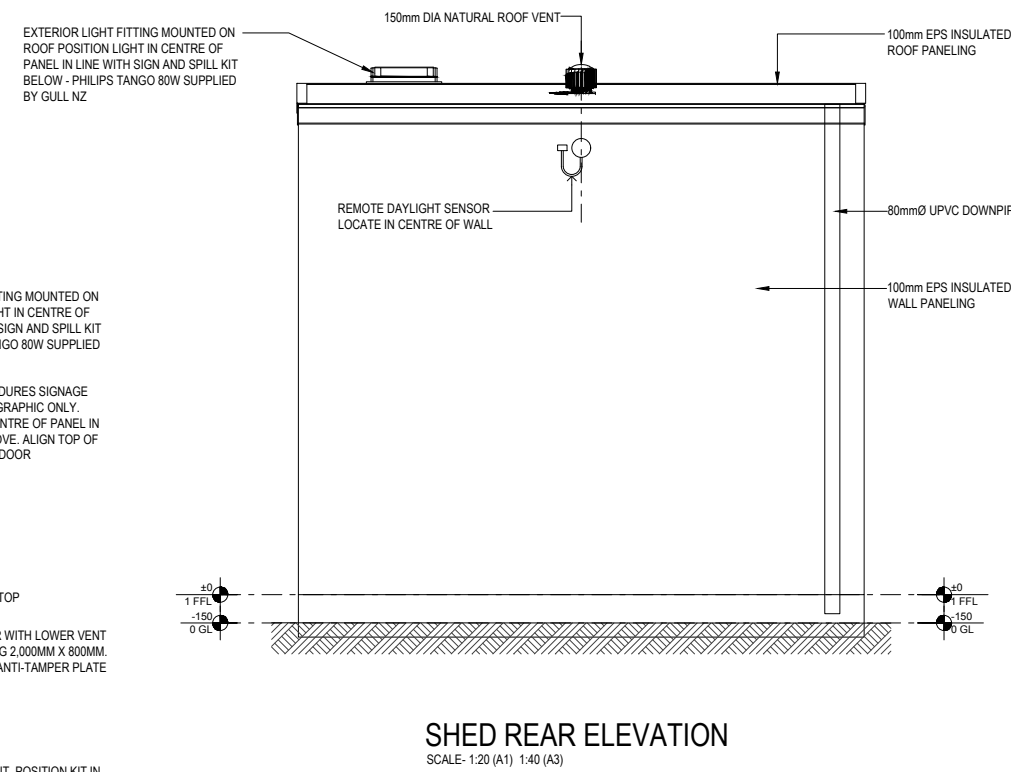
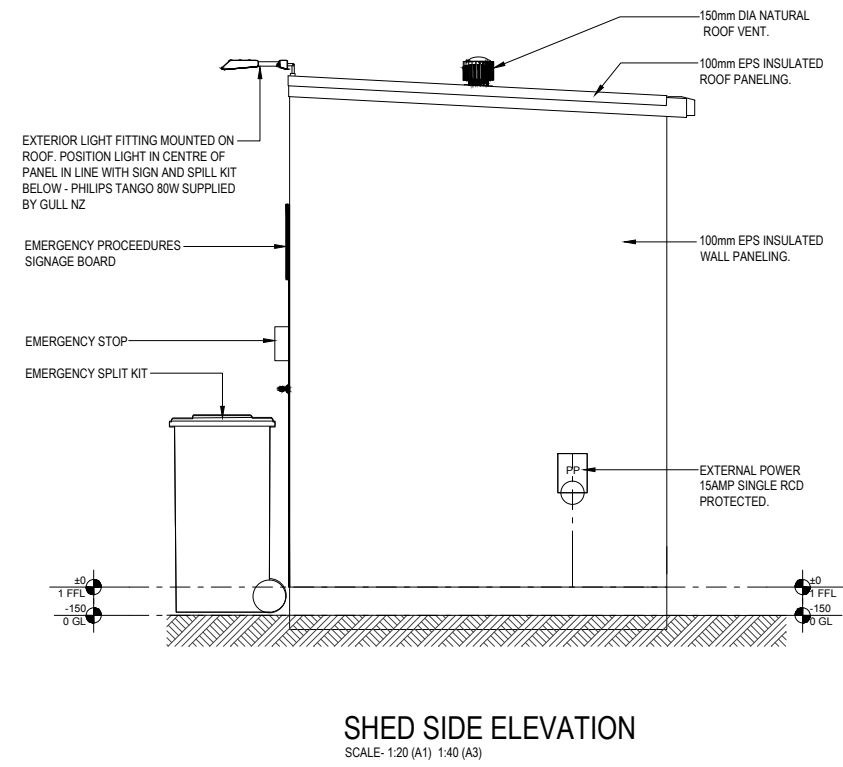
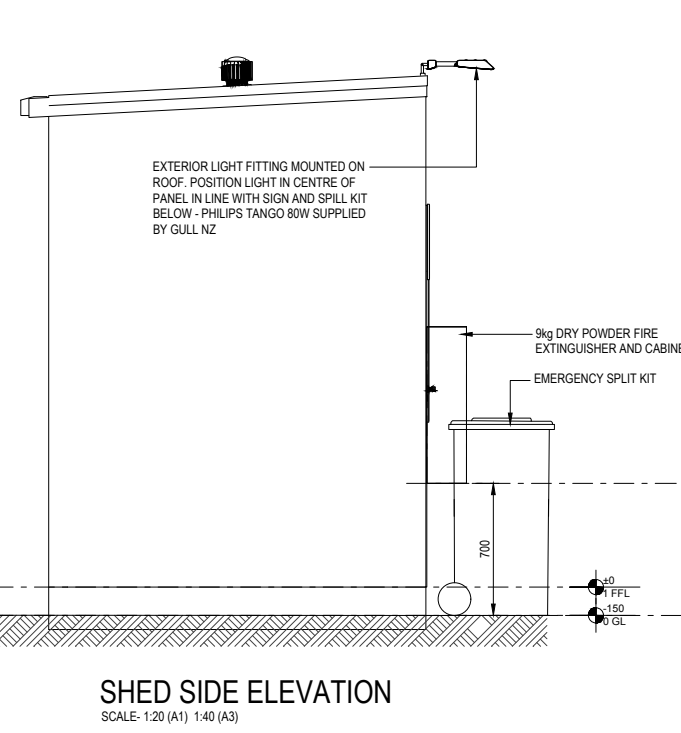
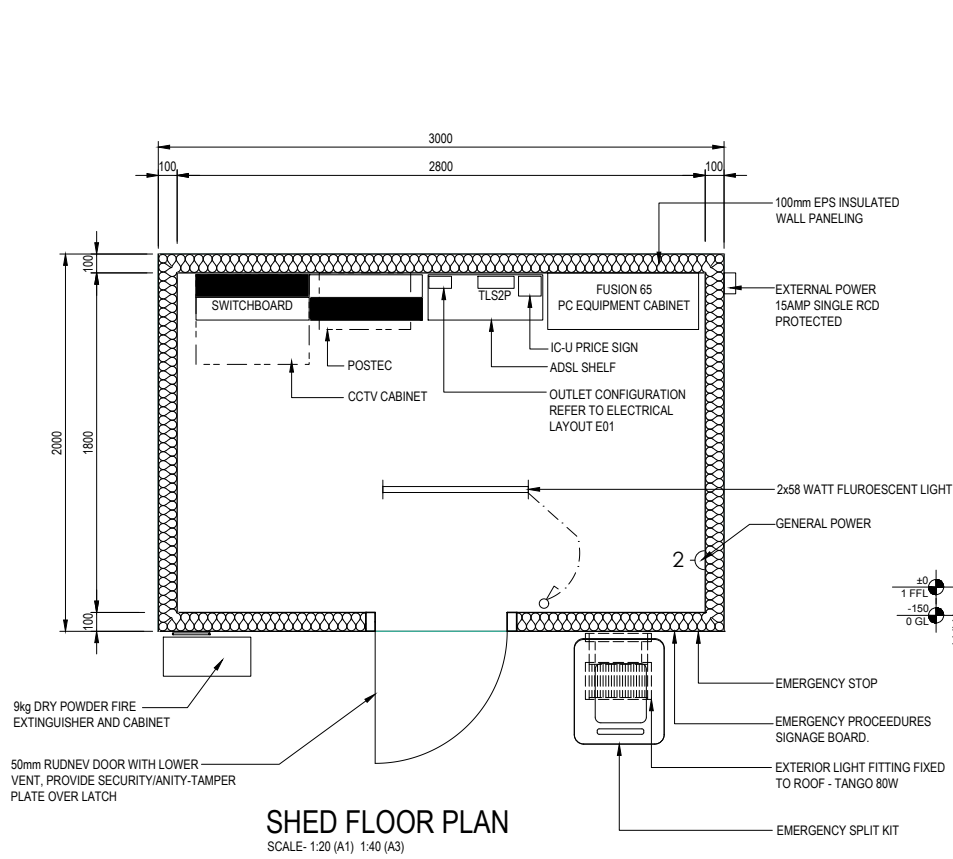
REV.	DESCRIPTION	BY	DATE
A	PRELIMINARY RESOURCE CONSENT ISSUE	BM	12-06-18


Project:  
**GULL PARAPARAUMU**  
 PROPOSED DEVELOPMENT  
 3 Kapiti Road, Paraparumu



Drawing:  
**Proposed ID Sign Plan & Elevations**

Drawing No.	2982-F11	Revision.	A
-------------	----------	-----------	---





	A1 Scale.	1:20
	A3 Scale.	1:40
	Designed.	L.MEIKLEJOHN
	Drawn.	-
	A1 Plot Scale.	1:1
	A3 Plot Scale.	1:2

THIS DOCUMENT IS CONFIDENTIAL. COPYRIGHT IS VESTED IN TECHNITRADES ARCHITECTURE LTD. WRITTEN CONSENT IS REQUIRED PRIOR TO REPRODUCTION.

**NOTES**

DO NOT SCALE.


DIMENSIONS IN MILLIMETERS UNLESS NOTED OTHERWISE.

IF IN DOUBT ON ANY ISSUE SEEK VERIFICATION PRIOR TO PROCEEDING.

READ THESE DRAWINGS IN CONJUNCTION WITH ALL OTHER CONSULTANTS DRAWINGS AND SPECIFICATIONS.

REV.	DESCRIPTION	BY	DATE
A	PRELIMINARY RESOURCE CONSENT ISSUE	BM	12-06-18

Project:  
**GULL PARAPARAUMU**  
PROPOSED DEVELOPMENT  
3 Kapiti Road, Paraparaumu


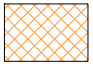


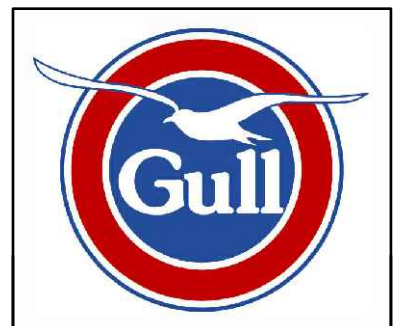
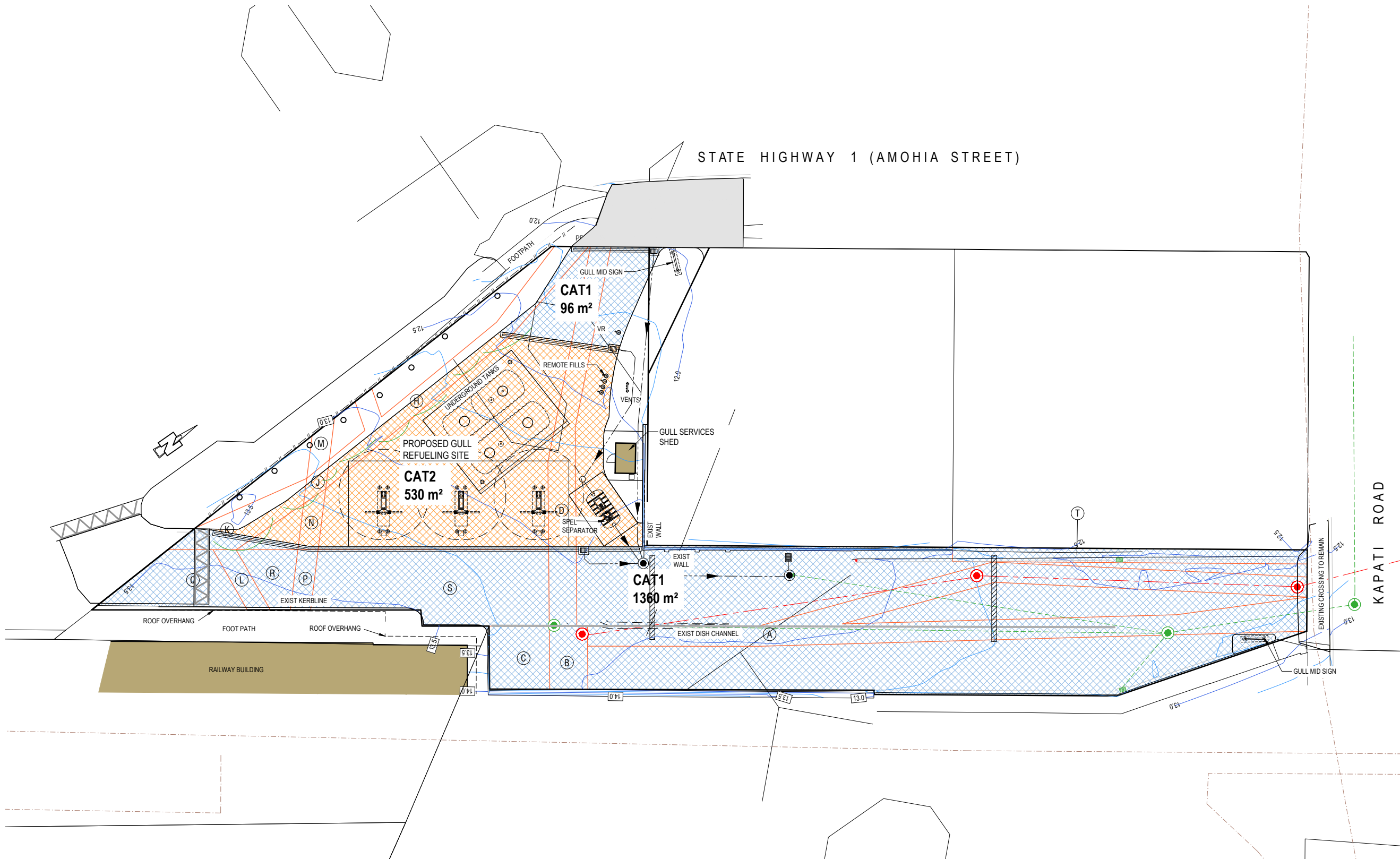
**TECHNITRADES**  
ARCHITECTURE

12 Ben Lomond Crescent, Pakuranga, Auckland 2010  
Phone (09) 5767166 | design@technitrades.co.nz

Drawing:  
**Proposed Services Shed Plan & Elevations**

Drawing No.	Revision.
<b>2982-F12</b>	<b>A</b>

STORMWATER MANAGEMENT		
RECEIVING ENVIRONMENT:		
	STORMWATER CATEGORY 1	DRAINAGE SYSTEMS DEDICATED TO THE CAPTURE AND DISPOSAL OF STORMWATER FROM AREAS WHERE THE PRESENCE OF FUEL AND OIL CONTAMINANTS IS UNLIKELY TO OCCUR
	STORMWATER CATEGORY 2	DRAINAGE SYSTEMS DEDICATED TO THE CAPTURE OF STORMWATER, WHICH MAY CONTAIN FUEL AND OIL CONTAMINANTS GENERATED FROM REFUELING ACTIVITIES, OR SPILLS AND REQUIRES APPROPRIATE CONTAINMENT AND/OR TREATMENT PRIOR TO DISPOSAL TO THE COUNCIL STORMWATER DRAINAGE NETWORK.



© THIS DOCUMENT IS CONFIDENTIAL. COPYRIGHT IS VESTED IN GULL NEW ZEALAND. WRITTEN CONSENT IS REQUIRED PRIOR TO REPRODUCTION.	A1 Scale:	1:200
	A3 Scale:	1:400
	Designed:	L.MEIKLEJOHN
	Drawn:	-
	A1 Plot Scale:	1:1
	A3 Plot Scale:	1:2

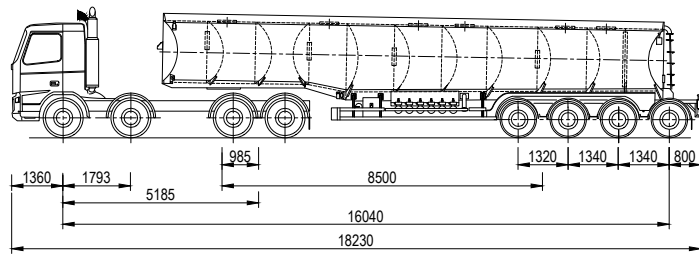
**NOTES**  
DO NOT SCALE.  
DIMENSIONS IN MILLIMETERS UNLESS NOTED OTHERWISE.  
IF IN DOUBT ON ANY ISSUE SEEK VERIFICATION PRIOR TO PROCEEDING.  
READ THESE DRAWINGS IN CONJUNCTION WITH ALL OTHER CONSULTANTS DRAWINGS AND SPECIFICATIONS.

REV.	DESCRIPTION	BY	DATE
E	TRAFFIC ENGINEERING REVS	MK	20-11-19
D	RAISED ENTRY REVS	MK	25-09-19
C	RC REVISION	MK	08-08-19

**GULL PARAPARAUMU**  
PROPOSED FUEL FACILITY  
3 Kapiti Road, Paraparaumu

**TECHNITRADES ARCHITECTURE**  
12 Ben Lomond Crescent, Pakuranga, Auckland 2010  
Phone (09) 5767166 | design@technitrades.co.nz

Drawing:		Proposed Storm Water Category Plan	
Drawing No.	2982-F13	Revision:	E

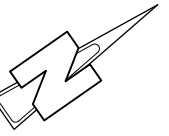


**8x4  
FUEL TANKER**

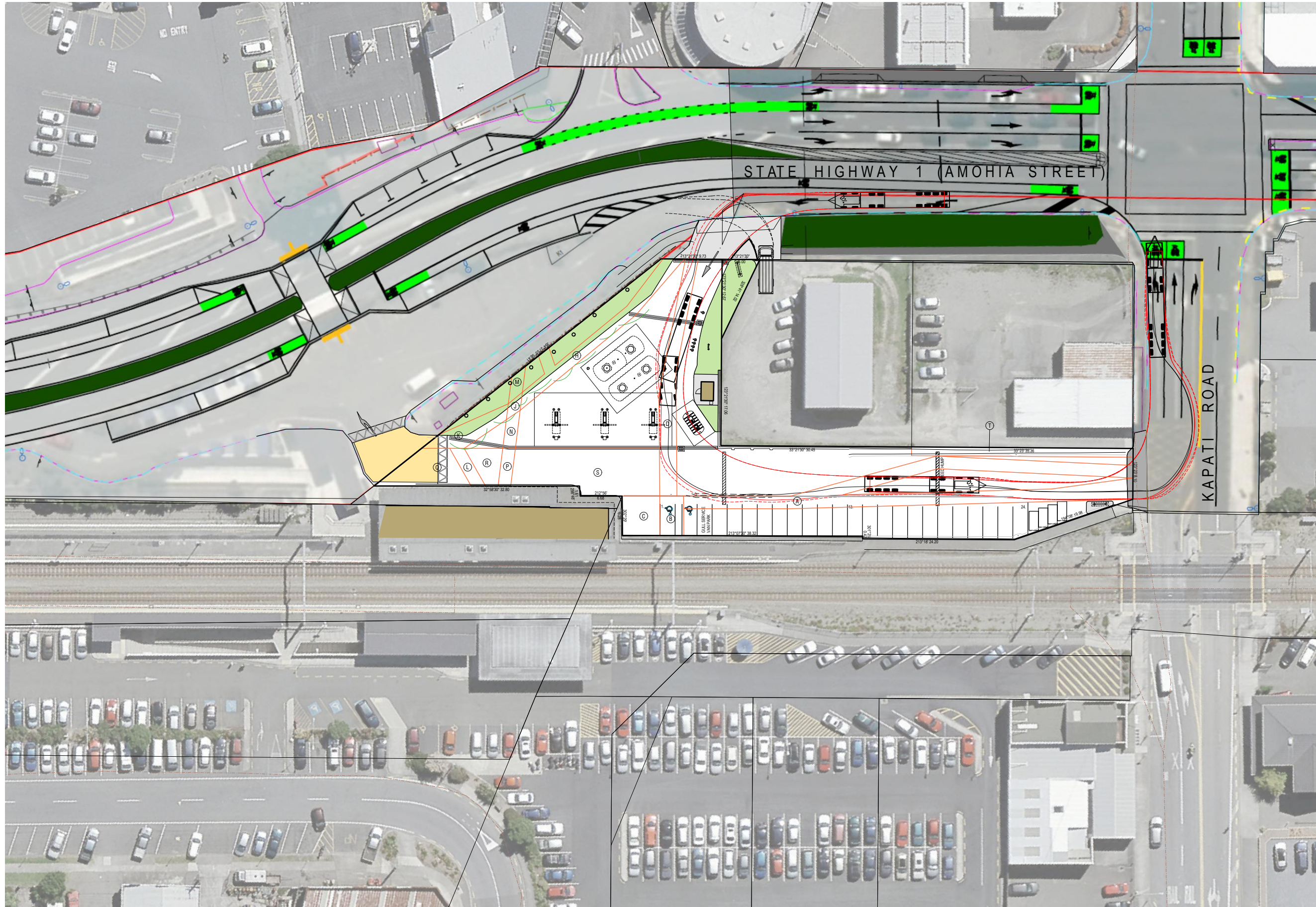
TRACTOR WIDTH	2500mm	TRAILER WIDTH	2500mm
TRACTOR TRACK	2500mm	TRAILER TRACK	2500mm
LOCK TO LOCK TIME	6.0 SEC	ARTICULATING ANGLE	70.0°
STEERING ANGLE	25.5°		

**LEGAL DESCRIPTION:**

PT LOT: 1  
 DP: 77182  
 SEC: 8  
 SOP: 38192  
 CT: WN56A/909  
 TOTAL AREA: 2247m2



**INDUSTRIAL USE ZONE**



© THIS DOCUMENT IS CONFIDENTIAL. COPYRIGHT IS VESTED IN GULL NEW ZEALAND. WRITTEN CONSENT IS REQUIRED PRIOR TO REPRODUCTION.	A1 Scale:	1:300
	A3 Scale:	1:600
	Designed:	L.MEIKLEJOHN
	Drawn:	-
	A1 Plot Scale:	1:1
	A3 Plot Scale:	1:2

**NOTES**  
 DO NOT SCALE.  
 DIMENSIONS IN MILLIMETERS UNLESS NOTED OTHERWISE.  
 IF IN DOUBT ON ANY ISSUE SEEK VERIFICATION PRIOR TO PROCEEDING.  
 READ THESE DRAWINGS IN CONJUNCTION WITH ALL OTHER CONSULTANTS DRAWINGS AND SPECIFICATIONS.

REV.	DESCRIPTION	BY	DATE
E	TRAFFIC ENGINEERING REVS	MK	25-11-19
D	RAISED ENTRY REVS	MK	25-09-19
C	RC REVISION	MK	12-08-19

**GULL PARAPARAUMU**  
 PROPOSED FUEL FACILITY  
 3 Kapati Road, Paraparaumu



Drawing:		Proposed Overall Site Plan With NZTA Overlay	
Drawing No.	2982-F14	Revision:	E