

**KAPITI COAST : CHOOSING FUTURES**

**COMMUNITY  
OUTCOMES**

**PAEKAKARIKI  
LOCAL OUTCOMES**



# Contents

	Page
<b>Foreword from Alan Milne, Mayor, Kapiti Coast District</b>	2
<b>Introduction to Paekakariki Local Outcomes</b>	3
<b>Outcome 1: There are healthy natural systems which people can enjoy</b>	4
<b>Outcome 2: Local character is retained within a cohesive district</b>	7
<b>Beach Road – concept and principles</b>	9
<b>Rail Precinct – concept and principles</b>	10
<b>The Parade – concept and principles</b>	11
<b>Ames Street Reserve and the southern end of Queen Elizabeth Park</b>	11
<b>Outcome 3: The nature and rate of population growth is appropriate to community goals</b>	12
<b>Outcome 4: The District’s resources are used wisely</b>	13
<b>Outcome 5: There is increased choice to work locally</b>	14
<b>Outcome 6: The District is a place that works for young people</b>	15
<b>Outcome 7: The District has a strong, healthy and involved community</b>	16





## Foreword – Alan Milne, Mayor, Kapiti Coast District

In 2003 – 2004, when the major initial consultation was undertaken to prepare our first Long Term Council Community Plan *Kapiti Coast: Choosing Futures*, we found we had a full set of broadly districtwide Community Outcomes as well as a number of chosen outcomes focused on specific localities and communities within the District.

Turning the seven principal districtwide outcomes into reality requires the Council to take the vision and develop timescales, funding and action plans. Among the action plans was the promise to work with local communities to give shape and form to their local outcomes.

This series of local outcome documents takes the districtwide outcomes and gives them a local focus. From there the specific local outcomes are presented along with programmes developed in consultation with the community to redefine the outcomes into practical visions and programmes for the future.

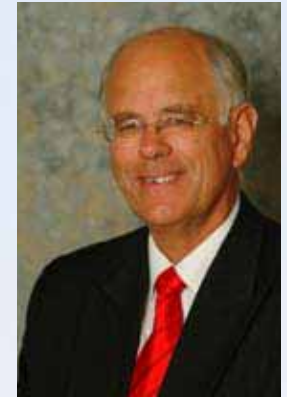
The vision for the Kapiti Coast's future is an exciting one but each community has its own view of the flavour and colour of that future. For some it is one of growth and expansion while for others growth must be limited but conditions provided for the community to continue to thrive.

To achieve the greatest long term benefit for the District, the way we proceed into the future needs to be focused and managed in a way that meets the needs of the people while retaining the essential character of the town and country.

The local outcome documents were developed through a series of meetings and design workshops involving many of the people and most of the significant groups in each community.

Their aim is to provide a framework or touchstone for options and actions for the future as local communities and the wider district evolve over time.

The challenge for each of us in our own community, for the District and the Council is to take these documents and their vision and ensure we shape a Kapiti Coast which is responsive to the needs of people and flexible enough to meet the forces that will form the District and this country in the years to come.





# Kapiti Coast: Choosing Futures – Paekakariki Local Outcomes

## Introduction

This document builds on *Kapiti Coast: Choosing Futures – Community Outcomes*. Under the umbrella of those broader community outcomes, it sets out a further layer of information about the community's vision for the Paekakariki Village and its surrounding area.

Residents and business people from the Paekakariki community have participated in a number of processes since the initial *Choosing Futures* in 2004. The material from these, along with the material from the original *Choosing Futures* workshops, builds up a clear picture of desired future direction.

The *Kapiti Coast: Choosing Futures – Community Outcomes* document covers areas such as the natural environment, growth management, protection of character, access, efficient use of resources (e.g. water, reduction of waste, energy), building local employment choices, creating a place that works for young people, and general enjoyment of what the Kapiti Coast offers. These are not repeated here in any detail.

This umbrella *Kapiti Coast: Choosing Futures – Community Outcomes* also acknowledges the particular character of communities and places along the Kapiti Coast. It does this in broad terms and the focus of the *Paekakariki Local Outcomes* document is to provide more guidance on what this means for Paekakariki.

*Kapiti Coast: Choosing Futures – Community Outcomes* and any *Local Outcomes* documents, have status under the Local Government Act 2002. Provided that the desired community

outcomes are consistent with a sustainable development approach and support the social, cultural, environmental and economic wellbeing of people and communities (both local and districtwide), the District Council and central government agencies must show how their actions progress this community vision.

While the broader *Community Outcomes* and *Local Outcomes* cannot bind an agency to a future direction or a particular level of investment, especially as these issues need to be balanced against needs and requirements in other areas and across the District as a whole, these documents together become the basis against which the performance of agencies in supporting the community's wellbeing can be assessed. They also form a more concrete basis for engagement between communities, agencies and institutions and discussion of particular issues.

The *Community Outcomes* and the *Local Outcomes* are not just documents intended to shape the response of the Council and other agencies. They signal a collectively desired direction for Paekakariki Village as a place and as a community. In many cases the challenge is for the residents to become involved, to do things in their community to make things work. Paekakariki already has a community where people are very involved in issues and decision making. Some people work very hard for the community. In other cases, such as the way individual shopping choices affect the local economy, things are less obvious. These Outcomes present a challenge for everyone into the future.

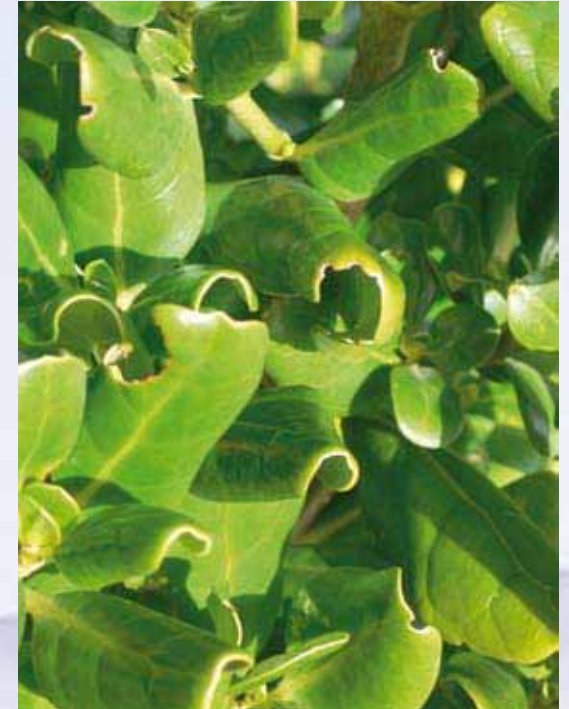


## Kapiti Coast: Choosing Futures - Outcome 1

### There are healthy natural systems which people can enjoy

This Outcome area contains a number of very specific detailed outcomes:

- natural areas shaping the fundamental form and quality of the District's settlements, including:
  - Kapiti Island as the symbolic heart of the District for iwi and the wider community;
  - the coast, stream and rivers, the coastal escarpment and hills,
  - bird corridors, regional parks and urban parks.
- the District becoming nationally recognised for the quality of its cycleways, walkways and bridleways network;
- best practice subdivision;
- best practice stormwater management and design;
- protection of vulnerable native vegetation and wildlife areas;
- the restoration of habitat and number of people involved.





## Further Local Outcomes for Paekakariki

### 1.1 That the Open Space Gateway area becomes:

- i. the pre-eminent natural context for the Village;
- ii. the defining natural 'entry' point to the District from the south;
- iii. a place for recreation;
- iv. that Paekakariki Village becomes known as a place from which to explore this wonderful natural area.

The concept of the Open Space Gateway<sup>1</sup> has been developed by members of the Paekakariki and Raumati communities since mid 2004. There is increasing interest in Paekakariki in that it is seen as the detailed framework for the future of the rural and parkland areas surrounding the Village. It incorporates Queen Elizabeth Park, Whareroa Farm and links to the Akatarawa and the Tararua Ranges and back towards Battle Hill Park. The junction of the coastal plains and the coastal hills is seen as unique. The vision is of a natural landscape, with extended opportunities for recreation and economic activity associated with recreation.

This natural frame, especially the dramatic backdrop of the coastal escarpment, along with the coastal edge, is the fundamental element shaping the character of Paekakariki.

<sup>1</sup> See *Open Space Gateway Concept – 2004*, prepared by the Open Space Gateway Group.





- 1.2 That Queen Elizabeth Park continues to improve and flourish as an important natural coastal and dune environment, with north / south and east / west walking, riding and cycling linkages.**
- 1.3 That the historical values and the natural values of Whareroa Farm (including as publicly owned land) are protected and preserved for future use and access by the public.**
- 1.4 That the coastal hazard issues along the Paekakariki waterfront and Queen Elizabeth Park are managed in a way that maximises where possible, restoration of natural character and processes.**
- 1.5 That the nationally significant coastal landscape and escarpment from Pukerua Bay to Paekakariki is retained free of the impacts of development, such that:**
  - its present landform and visual qualities are maintained forever;
  - native vegetation and habitat is restored;
  - views from the coastal highway are preserved;
  - development along the escarpment skyline is avoided;
  - the rocky coastline is not further adversely affected by development.





## Kapiti Coast: Choosing Futures - Outcome 2

### Local character is retained within a cohesive district

This Outcome is concerned with recognition of the uniqueness and character of the string of communities along the coast while also concentrating on those things that link people together to create a sense of the whole. The former brings a focus on such things as local landscape, the style and scale of buildings, the design of local roads and the feel of place. The latter includes a focus on access, on community networks and on participation in decision making.

The umbrella document *Kapiti Coast: Choosing Futures – Community Outcomes* acknowledges all of the communities along the coast. It has this to say about Paekakariki:

“that the role, nature and character of each of the Kapiti Coast’s towns and special areas is recognised and retained, and shapes the future form and quality of the District.”

- that Paekakariki is recognised as:
  - the southern entrance to the Kapiti Coast;
  - having a low-rise, low-key, ‘beach village’ character that defines settlement;
  - having unique heritage links with rail and the beach;
  - a strong creative community
- and that this is supported by:
  - enhancing steam heritage and creative opportunities;
  - managing infrastructure to fit local character;
  - enhancing the main street;
  - safe access to the Village and managed access to Queen Elizabeth Park;
  - improved and co-ordinated design of the coastal protection wall.



Since June 2004, the Paekakariki community has participated in a number of community design workshops which have defined the community vision, particularly in terms of the nature and character of the Village.





## **Further Local Outcomes for Paekakariki**

**2.1 That the history of Paekakariki, including the history of tangata whenua, is made a feature in public areas and places.**

**2.2 That the following overall character elements found in the Paekakariki Village continue to be a feature of the Village:**

- ‘bach-like’ and traditional building style and scale (height, bulk and site coverage), with a range of traditional building materials;
- buildings that fit into the dune landforms;
- large sections with significant areas of open space, trees and natural areas;
- Beach Road shops and other public buildings that reflect and retain local character and heritage, and not the standard ‘main street character’ found in many other centres;
- streets with minimal kerb and channelling but good access and lighting;
- large trees in the parks and streets;
- the backdrop of the coastal escarpment that dominates views from all streets lying behind the main dunes;
- views to Kapiti Island.

**2.3 That Paekakariki has safe access into and out of the Village onto the State Highway system and that it reflects the following design principles:**

- speed standards along the State Highway should be modified to allow for safe access, so that ‘at grade’ solutions can be found;
- any structures built do not adversely affect the landscape and design qualities of the coastal escarpment and the significance of that to the character of the Village;
- the nature and quality of Beach Road (main street) is protected;
- the visual qualities of any structures built merge as much as possible into the escarpment landscape.

**2.4 That the following smaller precincts of local character are maintained and enhanced:**

- Beach Road – main street, associated arts area and possible recreation precinct behind shops to the north;
- The Rail Precinct;
- The Parade;
- Queen Elizabeth Park – southern entrance;
- Ames Street Reserve and green corridor.

## Beach Road – concept and principles

The vision for the main street is to improve the general appearance, with wider footpaths in front of the shops for people to sit and walk. More trees and the inclusion of local sculptures and design are also important. At the same time, people want to keep the wide main street, with the ability to turn easily and park in the centre if necessary.

Generally, businesses and residents want to attract people into the village to improve the viability of local shops but they do not want to lose the informal feel of the place. No hanging baskets and terracotta paving stones for Paekakariki!

Any street furniture, such as sets and signs, should be simple, using bold dimensions, such as rail sleepers. Street trees should be natives.







### **Rail Precinct – concept and principles**

The overall rail area, including Steam Inc. and the Museum are important reflections of Paekakariki's history and convey a real character to the Village. Generally people want improved access to the rail station but especially to Steam Inc. in a way that does not have people turning on and off the State Highway. They would like to continue the landscaping and improved fence design that has been done to the north, down to the entrance to the Village. Trees should not be planted along the State Highway edge as it would impede views to the Village, but there should be planting.

More work needs to be done to refine this vision.





## **The Parade – concept and principles**

The vision for the Parade is to improve the seaward side of the road with:

- access points to the beach at each road junction and at the Sand Track;
- well designed seating places at these access points;
- a footpath on the western side, with a possible lower path along the seawall;
- either some restoration of the dune edge over time, or as a minimum, a seawall that is well designed and fits the character of the sea front;
- simple strong street furniture;
- possible room for a dairy or café at some of the junction points;
- low-key, low scale (not more than two storey dwellings along the Parade).

More work is needed on developing these ideas, along with improvements to the seawall.

## **Ames Street Reserve and the southern end of Queen Elizabeth Park**

These areas provide the green ‘ends’ to the Village. Ames Street Reserve contains one of the few remaining areas of original coastal vegetation, while the southern entrance of Queen Elizabeth Park provides a lovely recreation area. With the camping ground, it reflects the history of Paekakariki as a place to visit by the sea.

Residents value these areas as they are and want to see their qualities continue into the future.







## Kapiti Coast: Choosing Futures - Outcome 3

### The nature and rate of population growth is appropriate to community goals

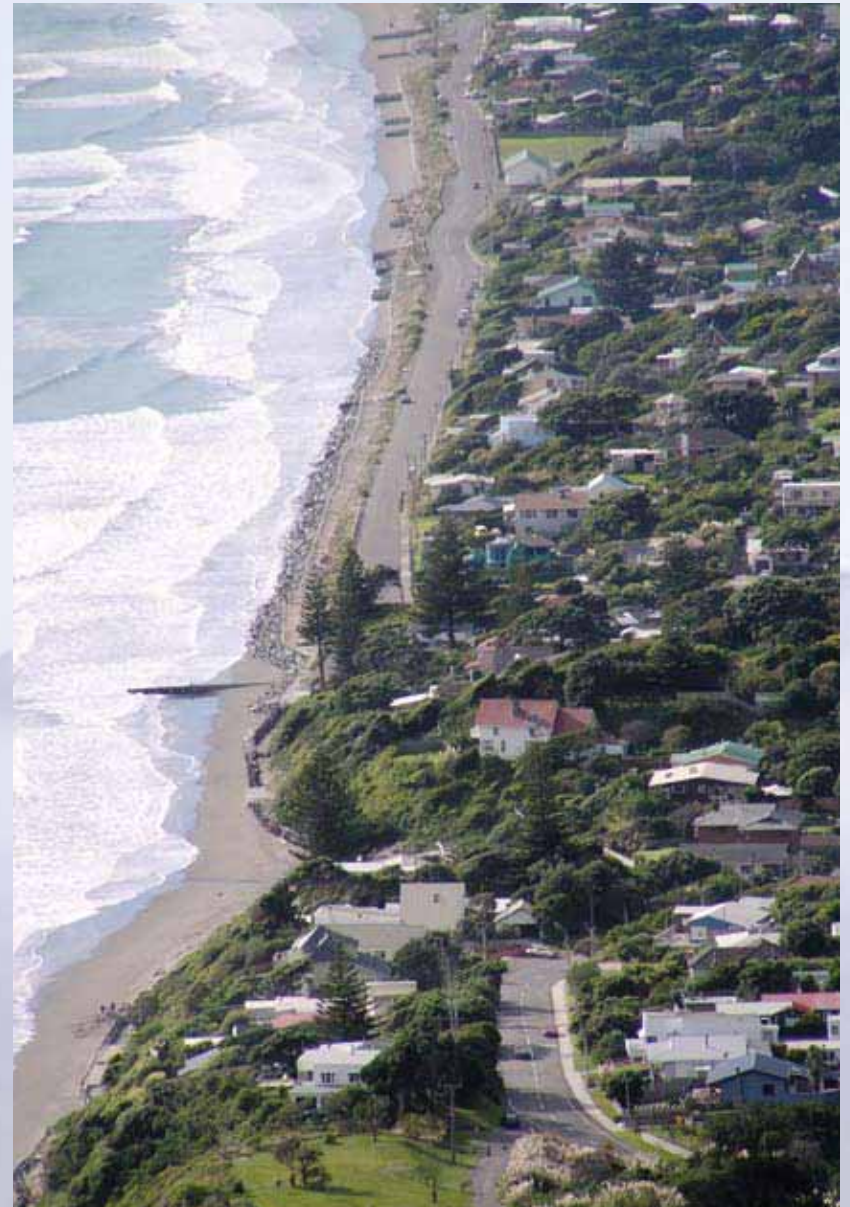
This Outcome records the community's vision of how the District should develop and respond to population growth pressures over time. It is significant, given the population pressures on the District. The key points include:

- the focus is on accommodation of natural population growth not a simple reaction to outside pressures;
- new growth is located in a way that retains natural features, local character and the scale of settlement;
- new growth should be linked to community benefit;
- intensification is explored in those areas where it clearly supports improved public transport, vitality of centres, increased safety of centres and provides housing choice;
- major infrastructure issues are resolved first before there is release of new land for development;
- local communities are always involved in decisions about impacts of growth.

It was recognised in this process that Paekakariki would never grow out from its current area. The key issue was to protect and retain character.

#### Further Local Outcomes for Paekakariki

- 3.1 That Paekakariki remains a low density village, of single dwellings on the current large sections, provided that within this general pattern there is housing choice for older residents.**





## **Kapiti Coast: Choosing Futures - Outcome 4**

### **The District's resources are used wisely**

This Outcome is concerned with efficient use, the conserving of finite resources and making sensible use of renewable resources. The vision focuses on:

- water, conservation and recycling;
- energy;
- wastewater and solid waste, including recycling;
- the coast – in terms of how it works as a system;
- people – using their skills and knowledge;
- food resources and genetically modified organisms (the direction was to be explored further).



### **Further Local Outcomes for Paekakariki**

- 4.1 That Paekakariki continues to lead the District in its efficient use of water, both as a matter of principle in terms of responsible water use, and as a way of deferring additional investment in water supply.**
- 4.2 That Paekakariki is known for its leadership in the quality of household on-site wastewater disposal systems and their management.**

Note: on-site wastewater systems are also a factor in shaping the low-density character of the Village.
- 4.3 That Paekakariki Village becomes known as a place that is GE free.**





## **Kapiti Coast: Choosing Futures - Outcome 5**

### **There is increased choice to work locally**

This Outcome is not just concerned with making sure as many people as possible in the District are in employment, it is also concerned with building a local economy, including increased business activity in and around our district, local and neighbourhood centres. Achieving this includes improved support for business development and set-up, more effective and reliable infrastructure and good internal district transport for people working locally.

#### **Further Local Outcomes for Paekakariki**

**5.1 That Paekakariki becomes known as the Southern Gateway to the Kapiti Coast, a place that provides an exciting visitor experience based on:**

- the Open Space Gateway;
- the heritage values of tangata whenua, the Village and Queen Elizabeth Park;
- arts and culture – linked to the wider district, including Otaki;
- the beach;
- events that are recognised regionally and nationally.

**5.2 That the Beach Road shops and businesses flourish and build to a position that :**

- they are able to absorb any impacts from external shocks and pressures;
- there is an increased variety, linked both to local residents needs and to providing services for visitors.

- 5.3 That the majority of local residents have taken responsibility for the health of shops on Beach Road and surrounds, and are consciously buying locally.**
- 5.4 That the majority of local residents in work are working from home or are employed within the Village or district.**
- 5.5 That businesses and residents actively support the Community Trust as a means to encourage local economic development.**



## Kapiti Coast: Choosing Futures - Outcome 6

### The District is a place that works for young people

A major theme expressed by parents, young people and many older people was a concern that the Kapiti Coast be more responsive to the needs and aspirations of young people.

- the beach destinations at Otaki and Paraparaumu have better facilities for young people in keeping with the character of those areas;
- the town centres are youth friendly, safe and interesting for young people to use;
- the public spaces are safe and welcoming for young people;
- that there is a better range of shops catering for young people;
- affordable flats and housing for young people;
- there are playgrounds within walking distance for all residential areas;
- improved range of entertainment facilities and events for young people;
- greater range of quality recreation facilities;
- young people are involved in decisions about themselves;
- people feel enabled to take action and act responsibly.







## Kapiti Coast: Choosing Futures - Outcome 7

### The District has a strong, healthy and involved community

This outcome is concerned with the direct health and wellbeing of each person in the District, the sense of community and the general enjoyment of what the District has to offer, a sense of fun and happiness. Other Outcomes will contribute to this but there are specific concerns here that people have identified as important. These include:

- a good cycleways, walkways and bridleways network;
- a good range of housing stock;
- good public transport;
- easy access to the beaches, including for older and disabled people;
- vibrant local and neighbourhood centres;
- an excellent District Public Health Service;
- good districtwide and local recreation facilities;
- older people have a sense of control over their futures and wellbeing;
- there is a high level of public participation in community decision-making.



### Further Local Outcomes for Paekakariki

#### 7.1 That there is a civic core to Paekakariki which is:

- located in Beach Road;
- includes St Peter's Hall as a community building and place to meet;
- includes the Library;
- has a place where people have access to copying and information facilities.

#### 7.2 That local people are heavily involved in the range of sports groups and facilities within the Village.

#### 7.3 That there is a resident General Practitioner's service within the Village.

#### 7.4 That there is improved access to the beach (see section on The Parade).

