

**Plan Change 2  
Council Officers' Planning Evidence**

**Appendix F**

**Maps showing submissions that request rezoning**

**Legend**

**Submissions requesting rezoning**

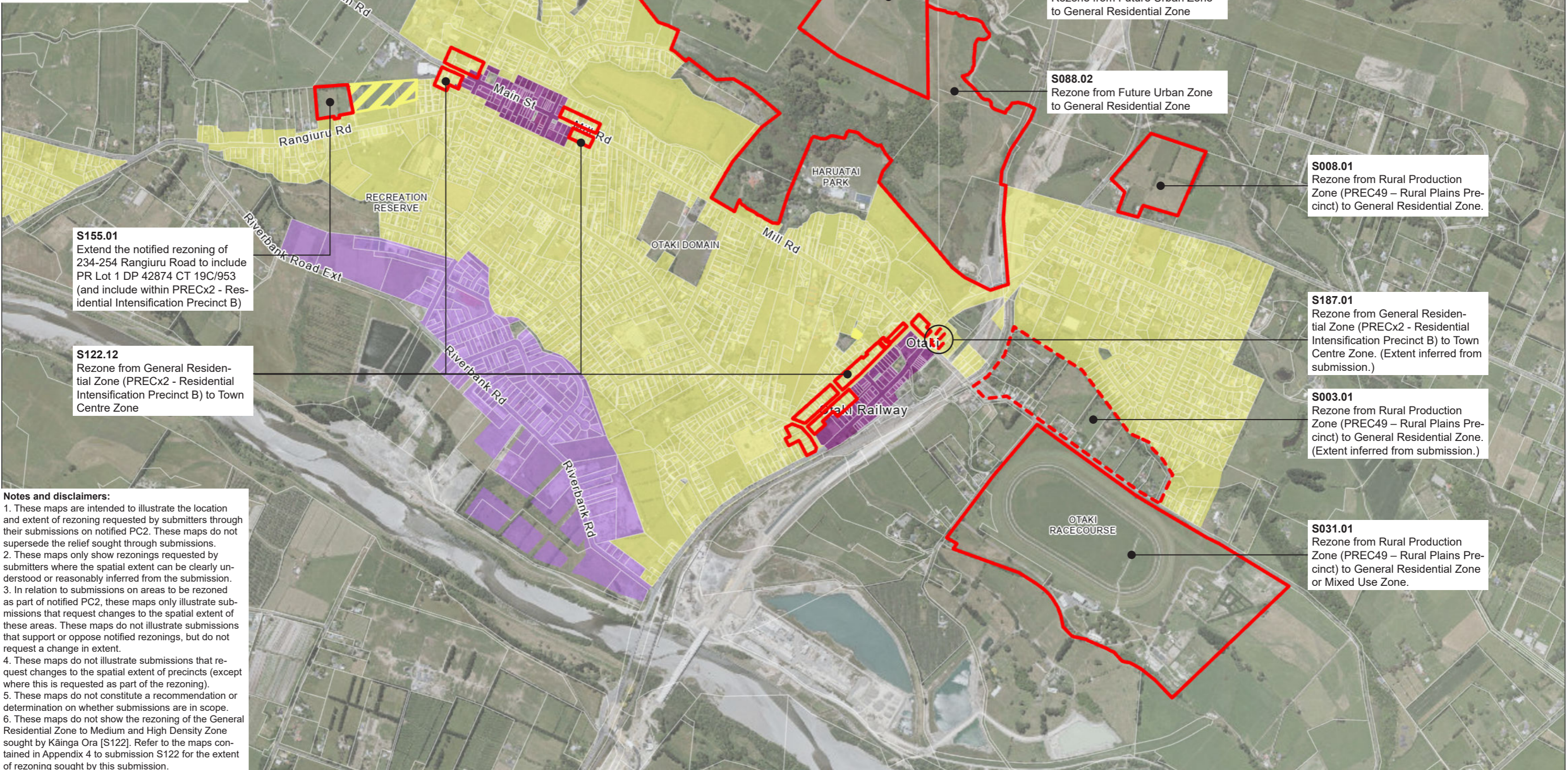
- Extent identified in submission
- Extent inferred from submission

**Areas to be rezoned as part of PC(N)**

- Area to be rezoned as General Residential Zone

**Operative District Plan Existing Urban Areas**

- General Residential Zone
- Town Centre Zone
- General Industrial Zone



**S155.01**  
Extend the notified rezoning of 234-254 Rangioru Road to include PR Lot 1 DP 42874 CT 19C/953 (and include within PRECx2 - Residential Intensification Precinct B)

**S122.12**  
Rezone from General Residential Zone (PRECx2 - Residential Intensification Precinct B) to Town Centre Zone

**S156.01**  
Rezone from General Rural Zone (PREC48 – Rural Dunes Precinct) to General Residential Zone. (Extent inferred from submission.)

**S088.01**  
Rezone from General Rural Zone (PREC18 – Eco-Hamlet Precinct) to General Residential Zone

**S088.01**  
Rezone from Future Urban Zone to General Residential Zone

**S088.02**  
Rezone from Future Urban Zone to General Residential Zone

**S008.01**  
Rezone from Rural Production Zone (PREC49 – Rural Plains Precinct) to General Residential Zone.

**S187.01**  
Rezone from General Residential Zone (PRECx2 - Residential Intensification Precinct B) to Town Centre Zone. (Extent inferred from submission.)

**S003.01**  
Rezone from Rural Production Zone (PREC49 – Rural Plains Precinct) to General Residential Zone. (Extent inferred from submission.)

**S031.01**  
Rezone from Rural Production Zone (PREC49 – Rural Plains Precinct) to General Residential Zone or Mixed Use Zone.

**Notes and disclaimers:**

1. These maps are intended to illustrate the location and extent of rezoning requested by submitters through their submissions on notified PC2. These maps do not supersede the relief sought through submissions.
2. These maps only show rezonings requested by submitters where the spatial extent can be clearly understood or reasonably inferred from the submission.
3. In relation to submissions on areas to be rezoned as part of notified PC2, these maps only illustrate submissions that request changes to the spatial extent of these areas. These maps do not illustrate submissions that support or oppose notified rezonings, but do not request a change in extent.
4. These maps do not illustrate submissions that request changes to the spatial extent of precincts (except where this is requested as part of the rezoning).
5. These maps do not constitute a recommendation or determination on whether submissions are in scope.
6. These maps do not show the rezoning of the General Residential Zone to Medium and High Density Zone sought by Kāinga Ora [S122]. Refer to the maps contained in Appendix 4 to submission S122 for the extent of rezoning sought by this submission.

# North Waikanae

**Legend**

**Submissions requesting rezoning**

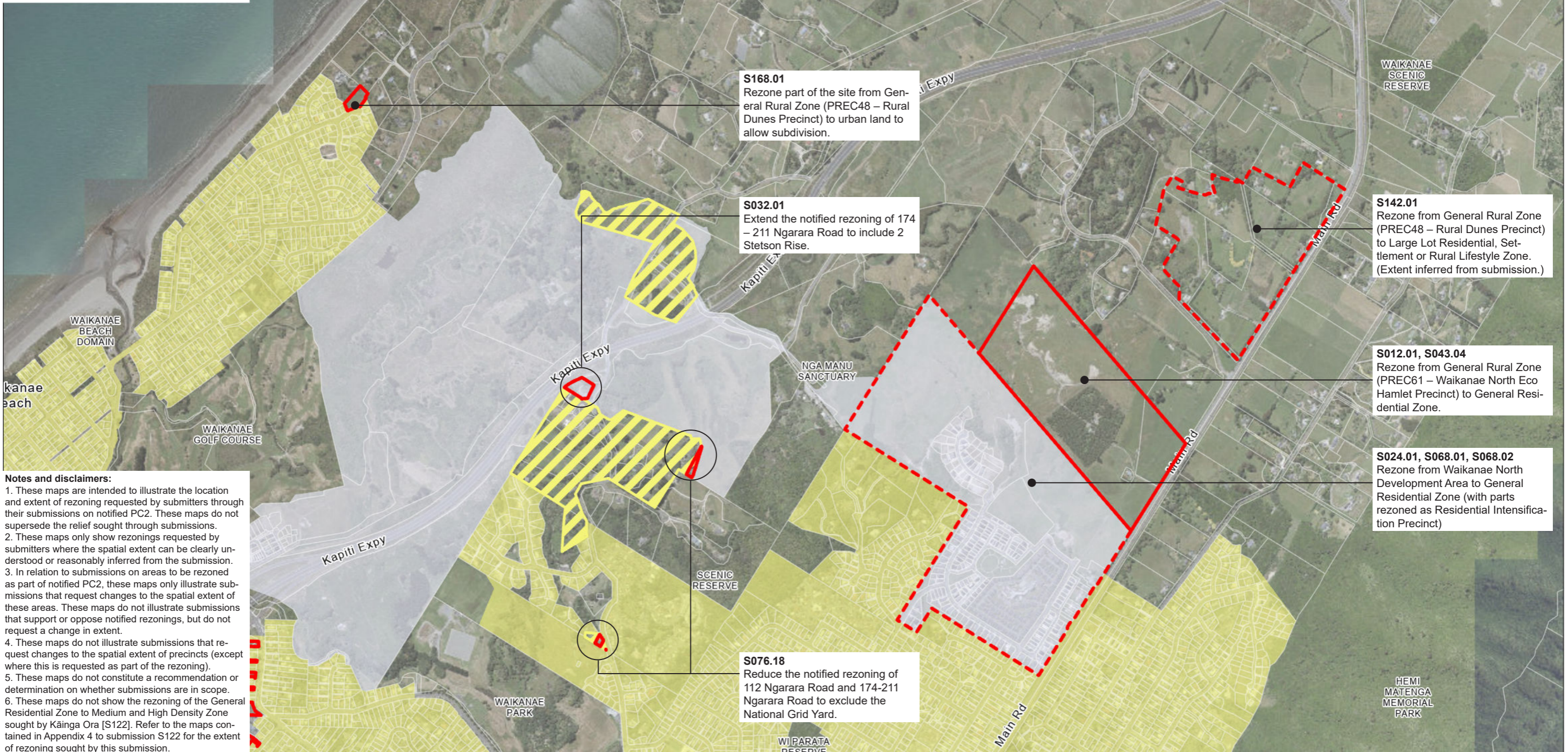
- Extent identified in submission
- Extent inferred from submission

**Areas to be rezoned as part of PC(N)**

- Area to be rezoned as General Residential Zone

**Operative District Plan Existing Urban Areas**

- General Residential Zone
- Local Centre Zone
- Ngārara Development Area
- Waikanae North Development Area



**Notes and disclaimers:**

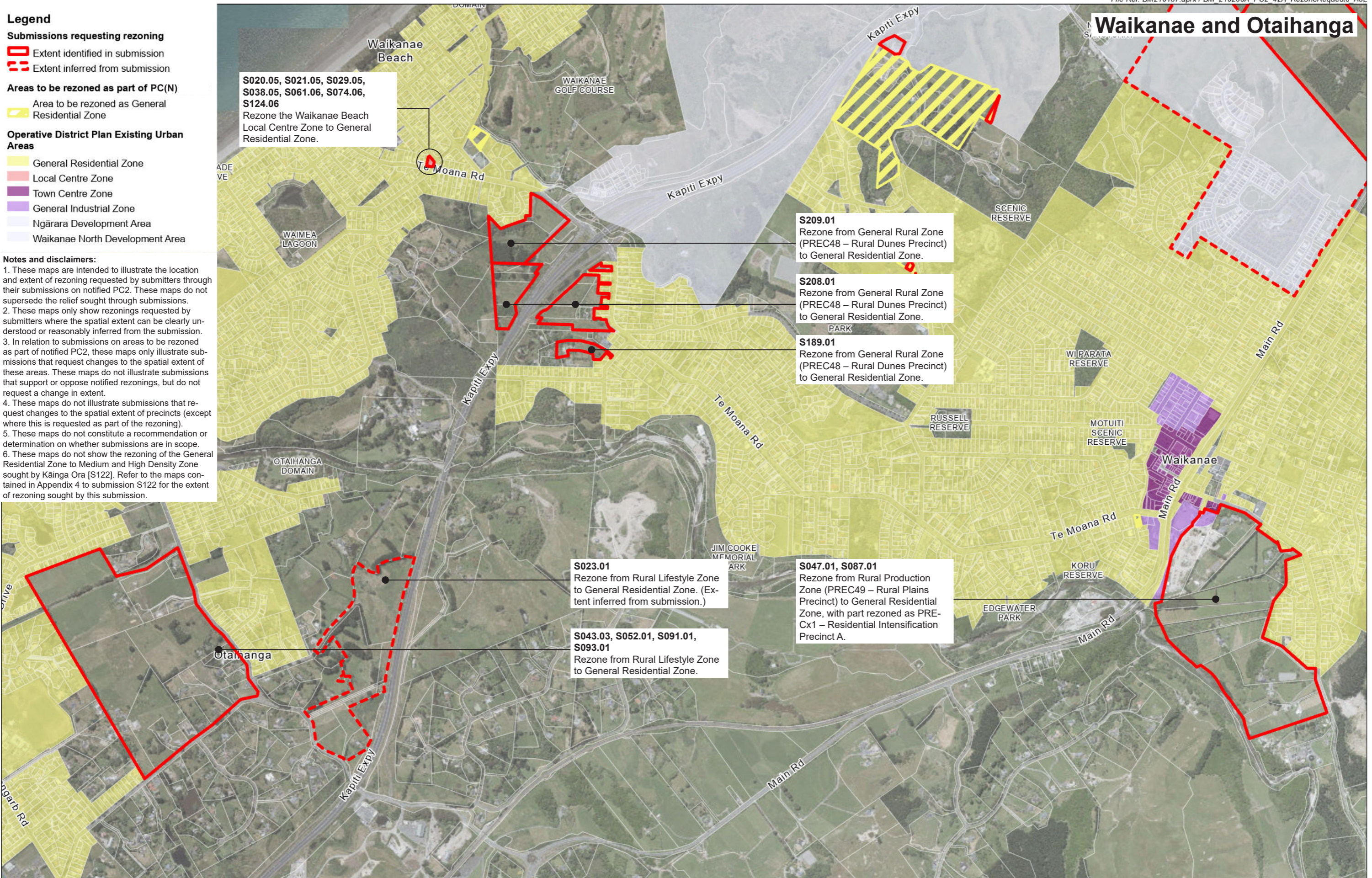
1. These maps are intended to illustrate the location and extent of rezoning requested by submitters through their submissions on notified PC2. These maps do not supersede the relief sought through submissions.
2. These maps only show rezonings requested by submitters where the spatial extent can be clearly understood or reasonably inferred from the submission.
3. In relation to submissions on areas to be rezoned as part of notified PC2, these maps only illustrate submissions that request changes to the spatial extent of these areas. These maps do not illustrate submissions that support or oppose notified rezonings, but do not request a change in extent.
4. These maps do not illustrate submissions that request changes to the spatial extent of precincts (except where this is requested as part of the rezoning).
5. These maps do not constitute a recommendation or determination on whether submissions are in scope.
6. These maps do not show the rezoning of the General Residential Zone to Medium and High Density Zone sought by Kāinga Ora [S122]. Refer to the maps contained in Appendix 4 to submission S122 for the extent of rezoning sought by this submission.

# Waikanae and Otaihanga

- Legend**
- Submissions requesting rezoning**
    - Extent identified in submission
    - Extent inferred from submission
  - Areas to be rezoned as part of PC(N)**
    - Area to be rezoned as General Residential Zone
  - Operative District Plan Existing Urban Areas**
    - General Residential Zone
    - Local Centre Zone
    - Town Centre Zone
    - General Industrial Zone
    - Ngārara Development Area
    - Waikanae North Development Area

**Notes and disclaimers:**

1. These maps are intended to illustrate the location and extent of rezoning requested by submitters through their submissions on notified PC2. These maps do not supersede the relief sought through submissions.
2. These maps only show rezonings requested by submitters where the spatial extent can be clearly understood or reasonably inferred from the submission.
3. In relation to submissions on areas to be rezoned as part of notified PC2, these maps only illustrate submissions that request changes to the spatial extent of these areas. These maps do not illustrate submissions that support or oppose notified rezonings, but do not request a change in extent.
4. These maps do not illustrate submissions that request changes to the spatial extent of precincts (except where this is requested as part of the rezoning).
5. These maps do not constitute a recommendation or determination on whether submissions are in scope.
6. These maps do not show the rezoning of the General Residential Zone to Medium and High Density Zone sought by Kāinga Ora [S122]. Refer to the maps contained in Appendix 4 to submission S122 for the extent of rezoning sought by this submission.



**S020.05, S021.05, S029.05, S038.05, S061.06, S074.06, S124.06**  
 Rezone the Waikanae Beach Local Centre Zone to General Residential Zone.

**S209.01**  
 Rezone from General Rural Zone (PREC48 – Rural Dunes Precinct) to General Residential Zone.

**S208.01**  
 Rezone from General Rural Zone (PREC48 – Rural Dunes Precinct) to General Residential Zone.

**S189.01**  
 Rezone from General Rural Zone (PREC48 – Rural Dunes Precinct) to General Residential Zone.



**S023.01**  
 Rezone from Rural Lifestyle Zone to General Residential Zone. (Extent inferred from submission.)

**S043.03, S052.01, S091.01, S093.01**  
 Rezone from Rural Lifestyle Zone to General Residential Zone.


**S047.01, S087.01**  
 Rezone from Rural Production Zone (PREC49 – Rural Plains Precinct) to General Residential Zone, with part rezoned as PRE-Cx1 – Residential Intensification Precinct A.

**Legend**

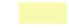







**Submissions requesting rezoning**

-  Extent identified in submission
-  Extent inferred from submission

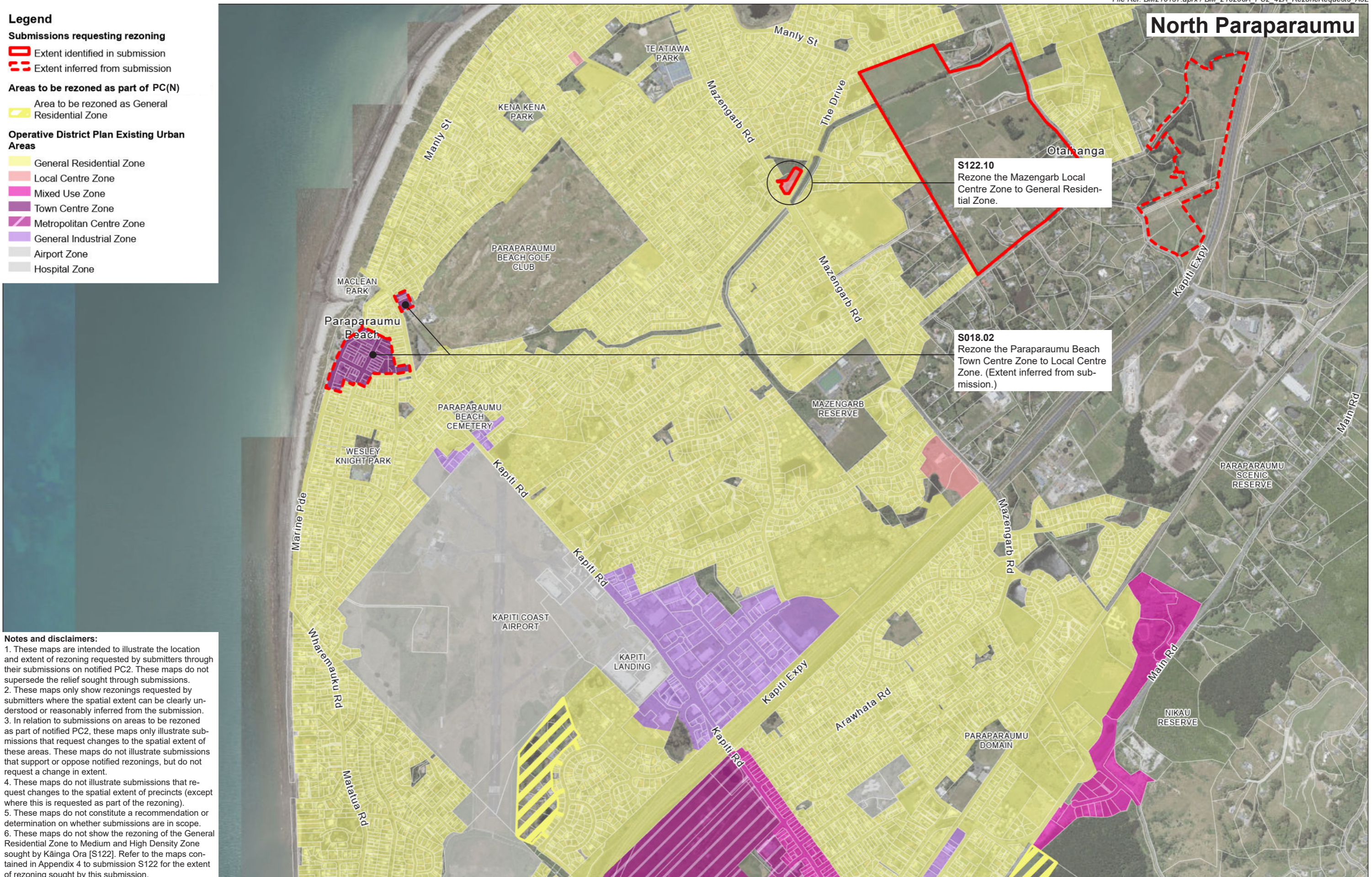
**Areas to be rezoned as part of PC(N)**

-  Area to be rezoned as General Residential Zone

**Operative District Plan Existing Urban Areas**

-  General Residential Zone
-  Local Centre Zone
-  Mixed Use Zone
-  Town Centre Zone
-  Metropolitan Centre Zone
-  General Industrial Zone
-  Airport Zone
-  Hospital Zone

**North Paraparaumu**



**S122.10**  
Rezone the Mazengarb Local Centre Zone to General Residential Zone.

**S018.02**  
Rezone the Paraparaumu Beach Town Centre Zone to Local Centre Zone. (Extent inferred from submission.)

**Notes and disclaimers:**

1. These maps are intended to illustrate the location and extent of rezoning requested by submitters through their submissions on notified PC2. These maps do not supersede the relief sought through submissions.
2. These maps only show rezonings requested by submitters where the spatial extent can be clearly understood or reasonably inferred from the submission.
3. In relation to submissions on areas to be rezoned as part of notified PC2, these maps only illustrate submissions that request changes to the spatial extent of these areas. These maps do not illustrate submissions that support or oppose notified rezonings, but do not request a change in extent.
4. These maps do not illustrate submissions that request changes to the spatial extent of precincts (except where this is requested as part of the rezoning).
5. These maps do not constitute a recommendation or determination on whether submissions are in scope.
6. These maps do not show the rezoning of the General Residential Zone to Medium and High Density Zone sought by Kāinga Ora [S122]. Refer to the maps contained in Appendix 4 to submission S122 for the extent of rezoning sought by this submission.

**Legend**

**Areas to be rezoned as part of PC(N)**

Area to be rezoned as General Residential Zone

**Operative District Plan Existing Urban Areas**

- General Residential Zone
- Local Centre Zone
- Mixed Use Zone
- Town Centre Zone
- Metropolitan Centre Zone
- General Industrial Zone
- Airport Zone
- Hospital Zone

**Paraparaumu and Raumati**

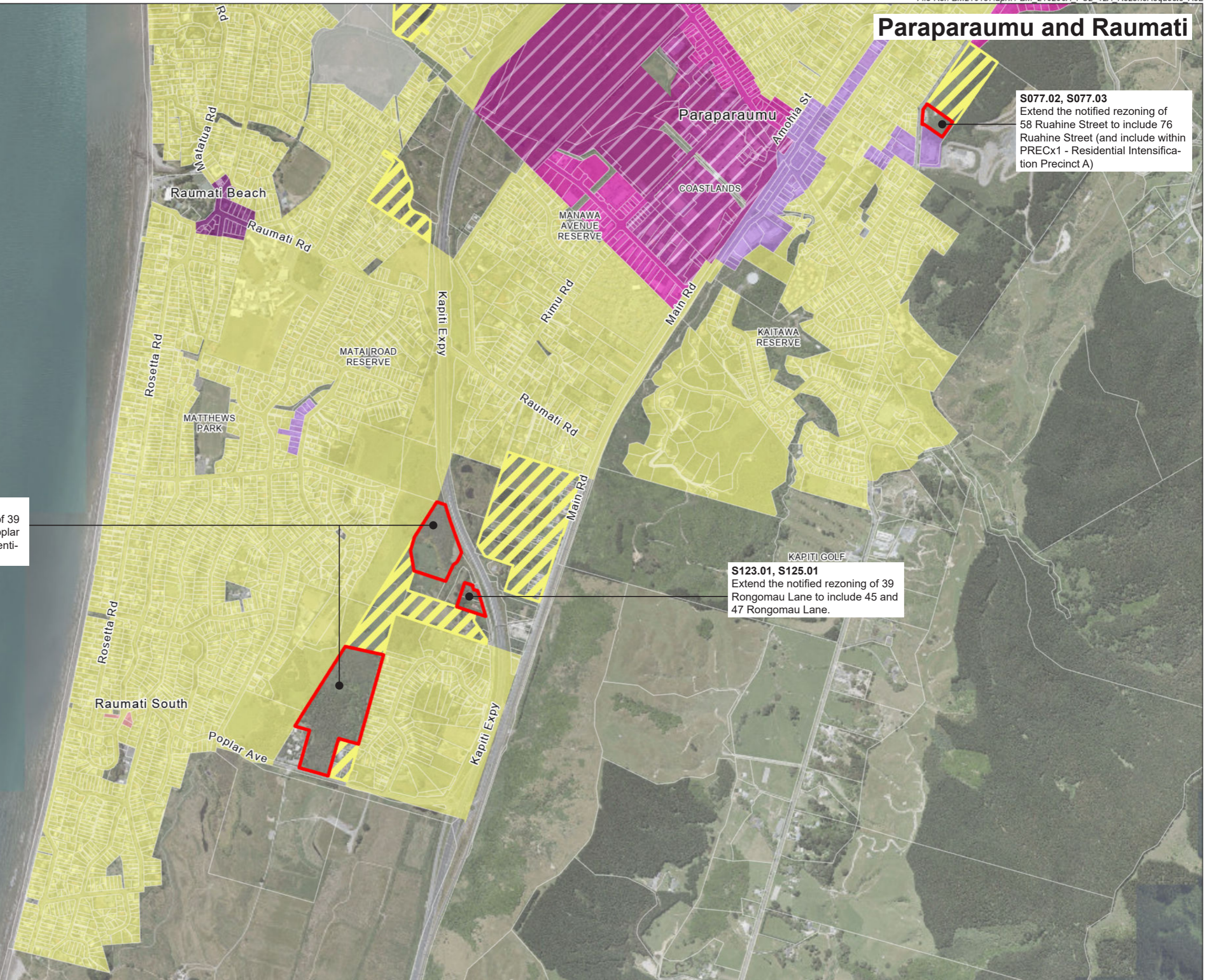
**S077.02, S077.03**  
 Extend the notified rezoning of 58 Ruahine Street to include 76 Ruahine Street (and include within PREC<sub>x1</sub> - Residential Intensification Precinct A)

**S205.01**  
 Extend the notified rezoning of 39 Rongomau Lane & 99-105 Poplar Avenue to include the land identified in the submission.

**S123.01, S125.01**  
 Extend the notified rezoning of 39 Rongomau Lane to include 45 and 47 Rongomau Lane.

**Notes and disclaimers:**

1. These maps are intended to illustrate the location and extent of rezoning requested by submitters through their submissions on notified PC2. These maps do not supersede the relief sought through submissions.
2. These maps only show rezonings requested by submitters where the spatial extent can be clearly understood or reasonably inferred from the submission.
3. In relation to submissions on areas to be rezoned as part of notified PC2, these maps only illustrate submissions that request changes to the spatial extent of these areas. These maps do not illustrate submissions that support or oppose notified rezonings, but do not request a change in extent.
4. These maps do not illustrate submissions that request changes to the spatial extent of precincts (except where this is requested as part of the rezoning).
5. These maps do not constitute a recommendation or determination on whether submissions are in scope.
6. These maps do not show the rezoning of the General Residential Zone to Medium and High Density Zone sought by Kāinga Ora [S122]. Refer to the maps contained in Appendix 4 to submission S122 for the extent of rezoning sought by this submission.




# Paekākāriki

## Legend


### Submissions requesting rezoning

 Extent inferred from submission

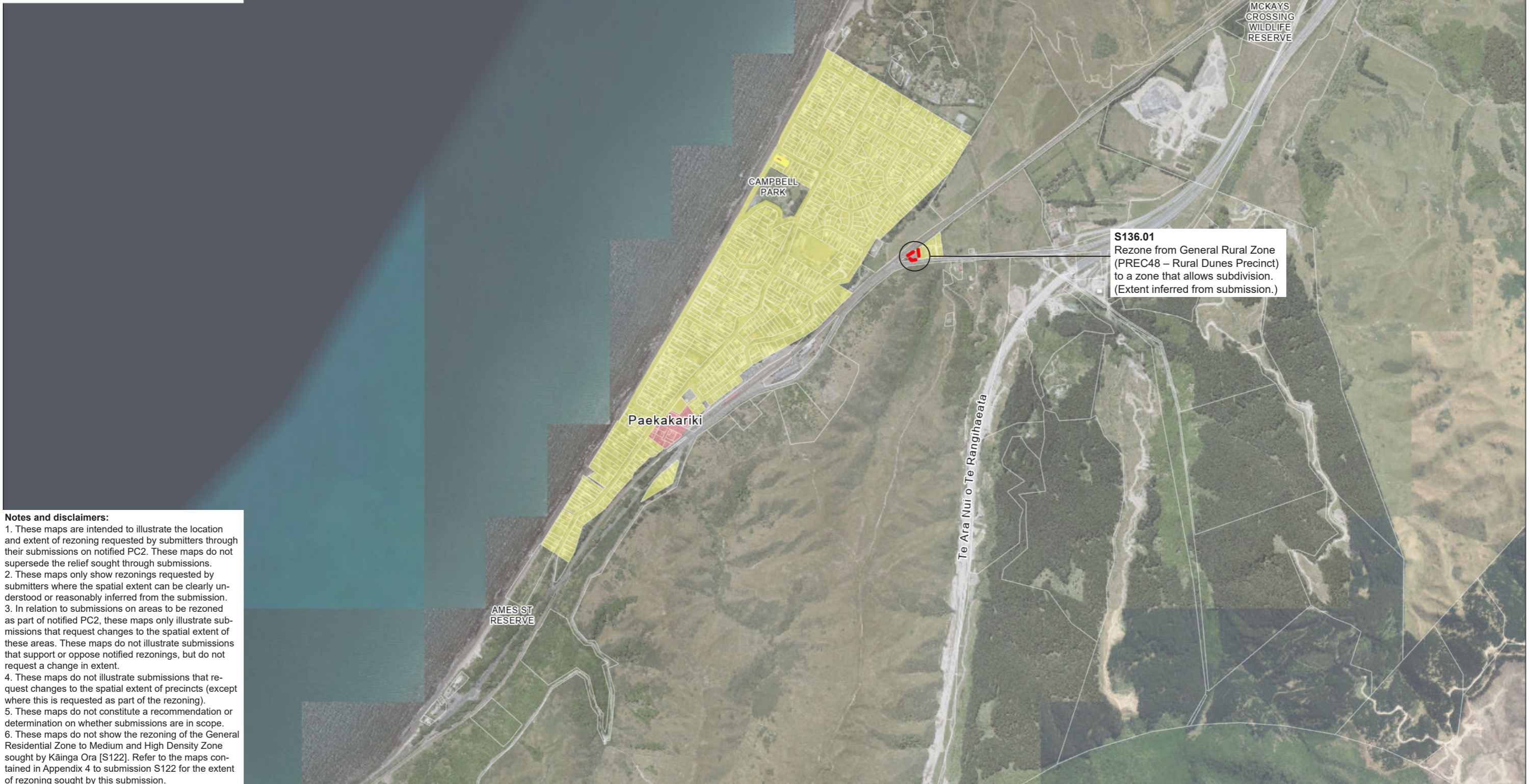
### Areas to be rezoned as part of PC(N)

 Area to be rezoned as General Residential Zone

### Operative District Plan Existing Urban Areas

 General Residential Zone

 Local Centre Zone



**S136.01**  
 Rezone from General Rural Zone (PREC48 – Rural Dunes Precinct) to a zone that allows subdivision. (Extent inferred from submission.)

### Notes and disclaimers:

1. These maps are intended to illustrate the location and extent of rezoning requested by submitters through their submissions on notified PC2. These maps do not supersede the relief sought through submissions.
2. These maps only show rezonings requested by submitters where the spatial extent can be clearly understood or reasonably inferred from the submission.
3. In relation to submissions on areas to be rezoned as part of notified PC2, these maps only illustrate submissions that request changes to the spatial extent of these areas. These maps do not illustrate submissions that support or oppose notified rezonings, but do not request a change in extent.
4. These maps do not illustrate submissions that request changes to the spatial extent of precincts (except where this is requested as part of the rezoning).
5. These maps do not constitute a recommendation or determination on whether submissions are in scope.
6. These maps do not show the rezoning of the General Residential Zone to Medium and High Density Zone sought by Kāinga Ora [S122]. Refer to the maps contained in Appendix 4 to submission S122 for the extent of rezoning sought by this submission.