

Proposed Plan Change 1L – Council Site Rezoning

The following text is provided for explanatory purposes only, and does not form part of Plan Change 1L.

Plan Change 1L seeks to:

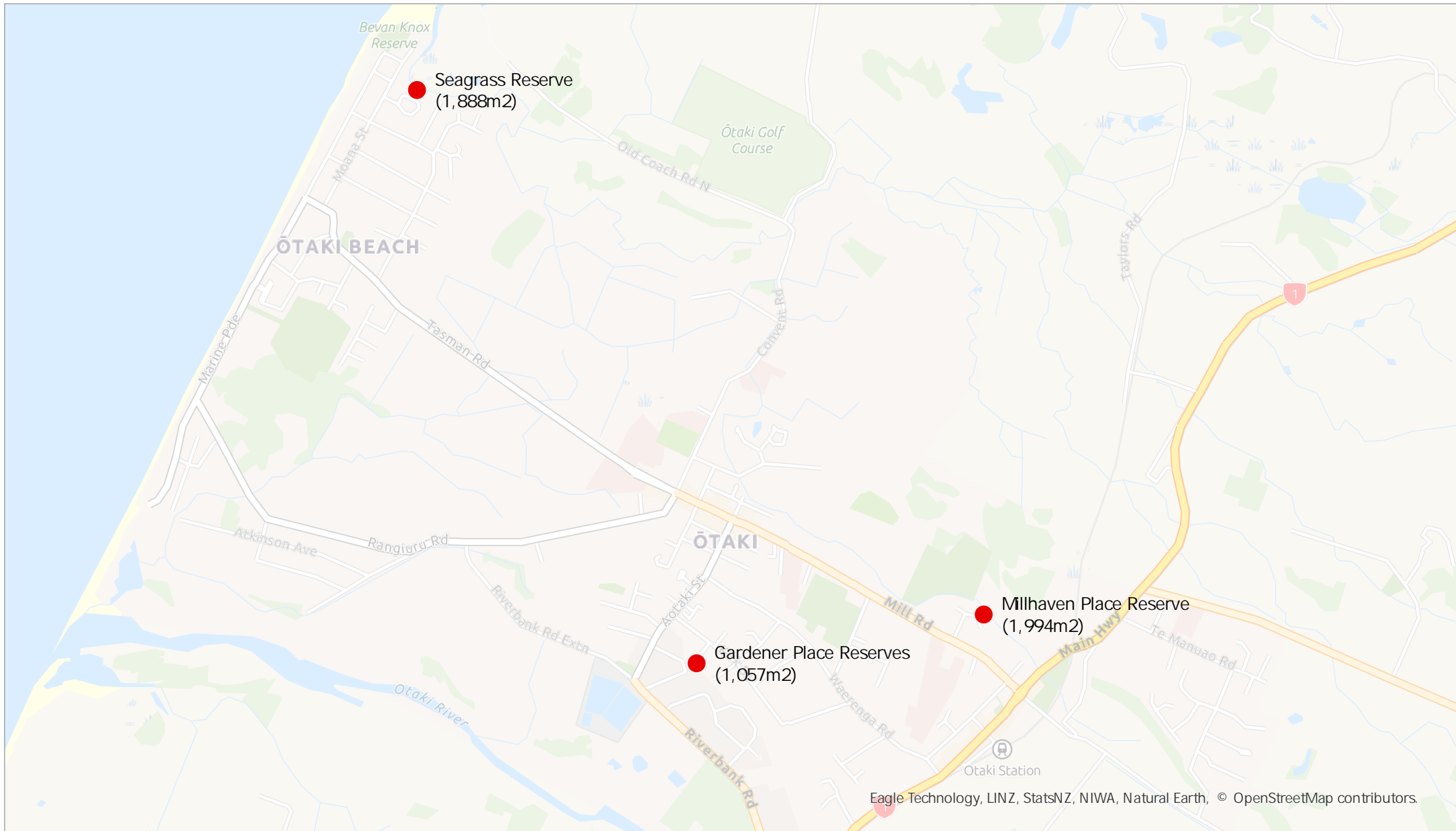
- Update the zoning of a number of Council-owned sites from General Residential Zone to Open Space Zone (and either to a Local Parks Precinct or a Recreation Precinct as appropriate) or to Natural Open Space Zone, and
- Reassign two Council-owned sites from Natural Open Space Zone to Open Space Zone (Recreation Precinct).

The first two maps are provided for information purposes only. The remaining maps mark the specific areas proposed to be rezoned as “Proposed Zones” (see map legends).

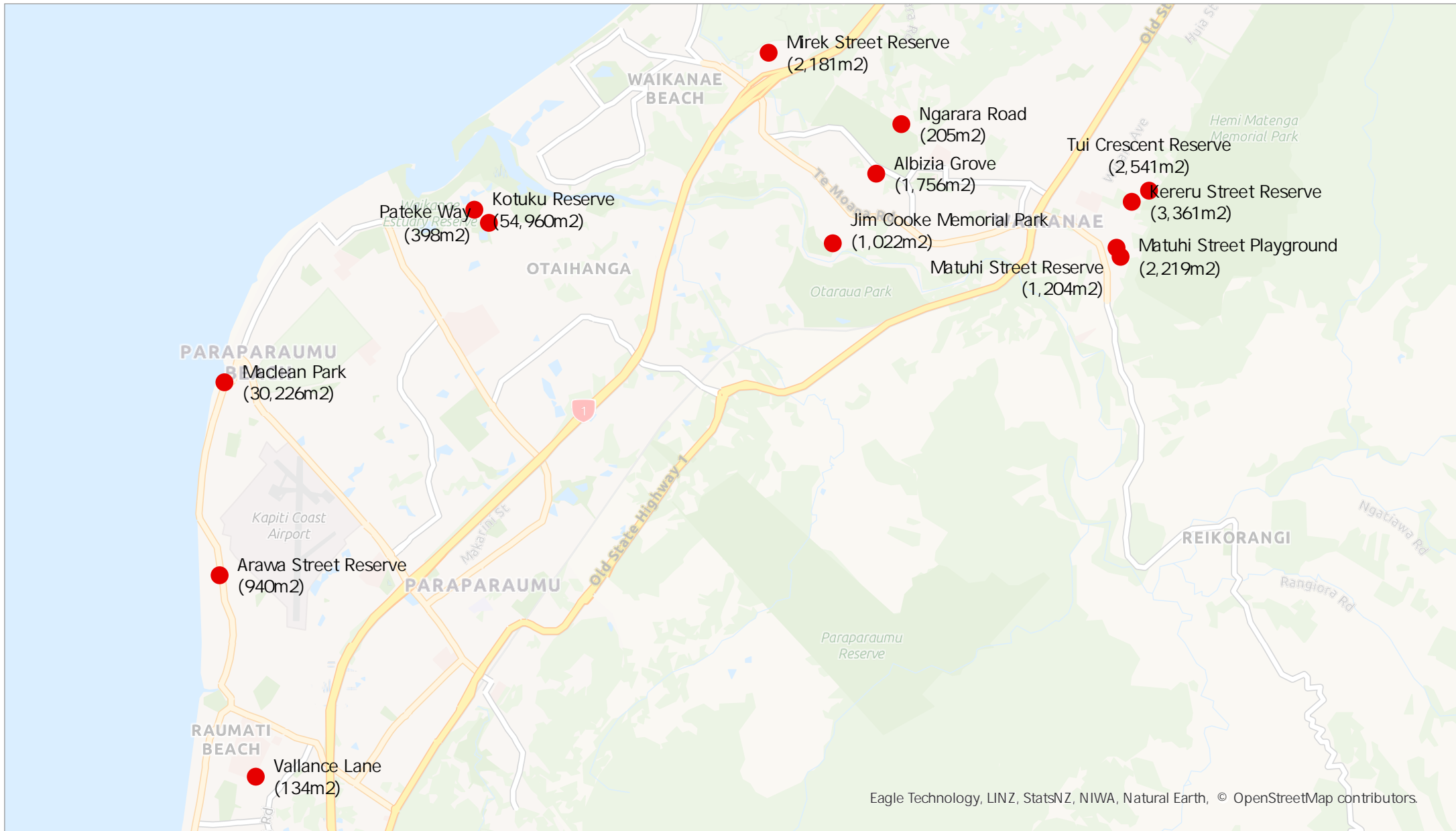
For the avoidance of doubt please note:

1. Plan Change 1L does not propose any changes to the District Plan’s objectives, policies, or rules.

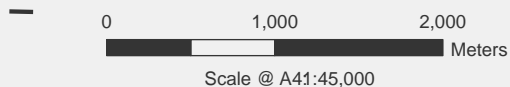
Proposed Plan Change 1L - Northern Map



Proposed Plan Change 1L - Southern Map



Eagle Technology, LINZ, StatsNZ, NIWA, Natural Earth, © OpenStreetMap contributors.



Date Printed: June 14, 2022

Kāpiti Coast District Council accepts no responsibility for incomplete or inaccurate information contained on this map. Use of this website is subject to, and constitutes acceptance of the conditions set out in our disclaimer. This publication is copyright reserved by the Kāpiti Coast District Council. Cadastral and Topographic information is derived from Land Information New Zealand, CROWN COPYRIGHT RESERVED.

Albizia Grove Accessway

Proposed Plan Change 1L



0 25 50
Meters
Scale @A4: 1:1,200

Date Printed: June 20, 2022

Kāpiti Coast District Council accepts no responsibility for incomplete or inaccurate information contained on this map. Use of this website is subject to, and constitutes acceptance of the conditions set out in our disclaimer. This publication is copyright reserved by the Kāpiti Coast District Council. Cadastral and Topographic information is derived from Land Information New Zealand, CROWN COPYRIGHT RESERVED.



0 10 20
Meters
Scale @ A4: 1:700

Date Printed: June 20, 2022

Kāpiti Coast District Council accepts no responsibility for incomplete or inaccurate information contained on this map. Use of this website is subject to, and constitutes acceptance of the conditions set out in our disclaimer. This publication is copyright reserved by the Kāpiti Coast District Council. Cadastral and Topographic information is derived from Land Information New Zealand, CROWN COPYRIGHT RESERVED.

Gardner Place Reserves

Proposed Plan Change 1L



0 25 50
Meters
Scale @ A4: 1:1,000

Date Printed: June 20, 2022

Kāpiti Coast District Council accepts no responsibility for incomplete or inaccurate information contained on this map. Use of this website is subject to, and constitutes acceptance of the conditions set out in our disclaimer. This publication is copyright reserved by the Kāpiti Coast District Council. Cadastral and Topographic information is derived from Land Information New Zealand, CROWN COPYRIGHT RESERVED.



0 30 60 Meters

Scale @ A4: 1:1,200

Date Printed: June 20, 2022

Kāpiti Coast District Council accepts no responsibility for incomplete or inaccurate information contained on this map. Use of this website is subject to, and constitutes acceptance of the conditions set out in our disclaimer. This publication is copyright reserved by the Kāpiti Coast District Council. Cadastral and Topographic information is derived from Land Information New Zealand, CROWN COPYRIGHT RESERVED.

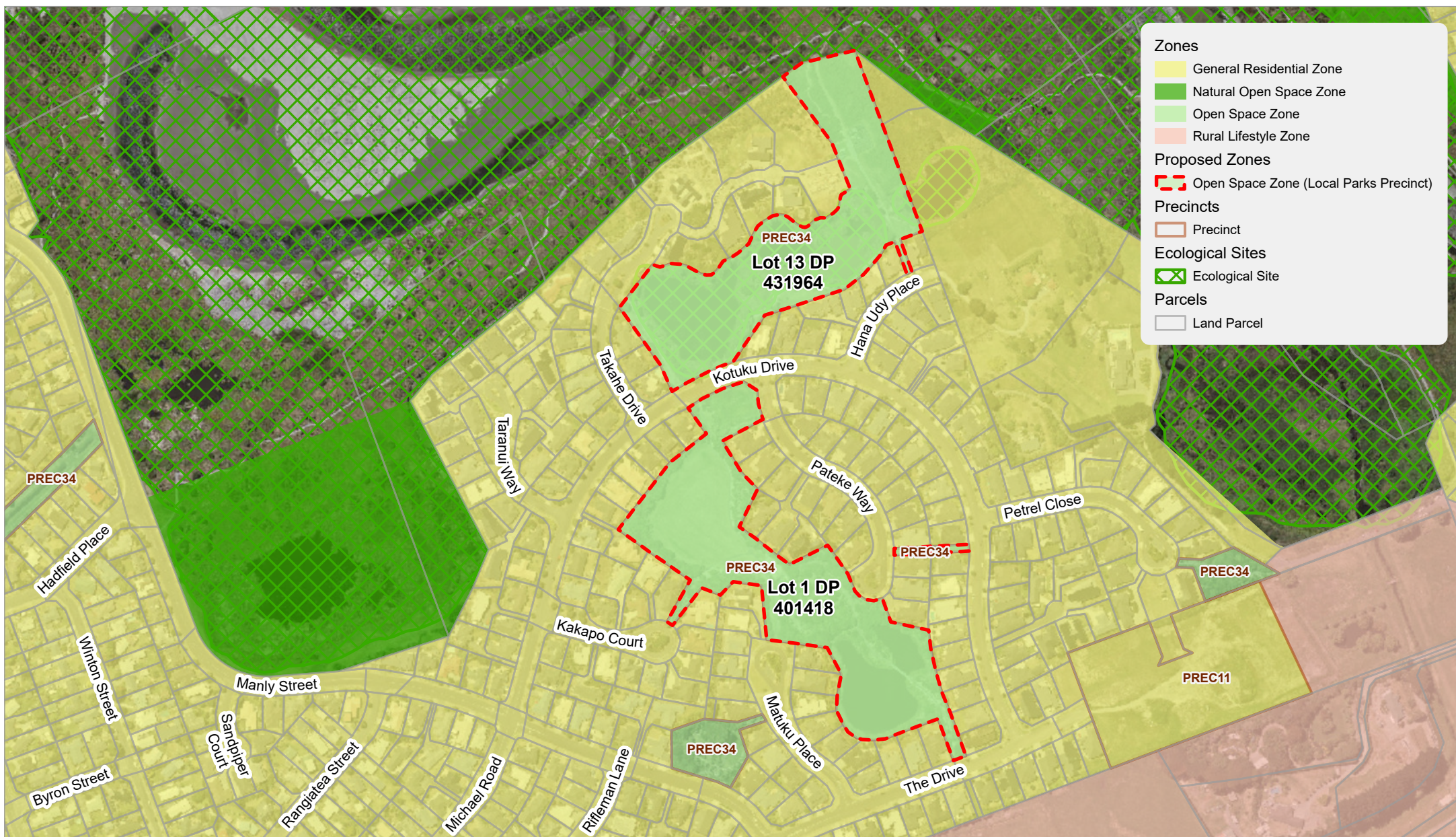


0 25 50
Meters

Scale @ A4: 1:1,000

Date Printed: June 20, 2022

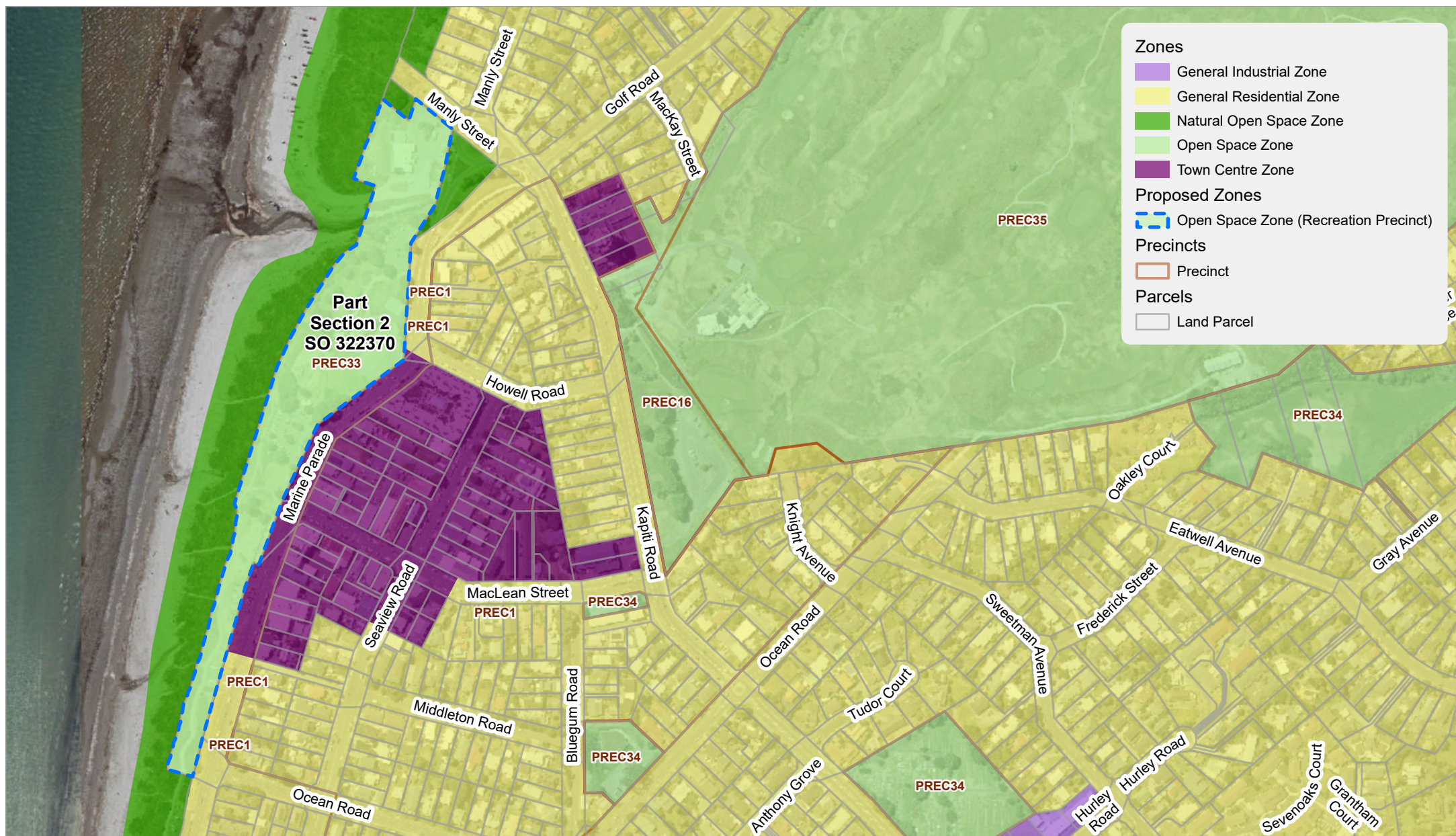
Kāpiti Coast District Council accepts no responsibility for incomplete or inaccurate information contained on this map. Use of this website is subject to, and constitutes acceptance of the conditions set out in our disclaimer. This publication is copyright reserved by the Kāpiti Coast District Council. Cadastral and Topographic information is derived from Land Information New Zealand, CROWN COPYRIGHT RESERVED.



0 100 200 Meters
Scale @ A4: 1:4,500

Date Printed: June 20, 2022

Kāpiti Coast District Council accepts no responsibility for incomplete or inaccurate information contained on this map. Use of this website is subject to, and constitutes acceptance of the conditions set out in our disclaimer. This publication is copyright reserved by the Kāpiti Coast District Council. Cadastral and Topographic information is derived from Land Information New Zealand, CROWN COPYRIGHT RESERVED.



0 100 200
Meters

Scale @ A4: 1:4,500

Date Printed: June 20, 2022

Kāpiti Coast District Council accepts no responsibility for incomplete or inaccurate information contained on this map. Use of this website is subject to, and constitutes acceptance of the conditions set out in our disclaimer. This publication is copyright reserved by the Kāpiti Coast District Council. Cadastral and Topographic information is derived from Land Information New Zealand, CROWN COPYRIGHT RESERVED.

Matuhi Street Playground

Proposed Plan Change 1L



0 25 50
Meters
Scale @ A4: 1:1,000

Date Printed: June 20, 2022

Kāpiti Coast District Council accepts no responsibility for incomplete or inaccurate information contained on this map. Use of this website is subject to, and constitutes acceptance of the conditions set out in our disclaimer. This publication is copyright reserved by the Kāpiti Coast District Council. Cadastral and Topographic information is derived from Land Information New Zealand, CROWN COPYRIGHT RESERVED.



0 10 20
Meters
Scale @ A4: 1:500

Date Printed: June 20, 2022

Kāpiti Coast District Council accepts no responsibility for incomplete or inaccurate information contained on this map. Use of this website is subject to, and constitutes acceptance of the conditions set out in our disclaimer. This publication is copyright reserved by the Kāpiti Coast District Council. Cadastral and Topographic information is derived from Land Information New Zealand, CROWN COPYRIGHT RESERVED.



Zones

- General Residential Zone
- Natural Open Space Zone
- Open Space Zone

Proposed Zones

- Natural Open Space Zone

Precincts

- Precinct

Parcels

- Land Parcel



0 25 50
Meters

Scale @ A4: 1:1,000

Date Printed: June 20, 2022

Kāpiti Coast District Council accepts no responsibility for incomplete or inaccurate information contained on this map. Use of this website is subject to, and constitutes acceptance of the conditions set out in our disclaimer. This publication is copyright reserved by the Kāpiti Coast District Council. Cadastral and Topographic information is derived from Land Information New Zealand, CROWN COPYRIGHT RESERVED.



0 10 20
Meters
Scale @ A4: 1:500

Date Printed: June 20, 2022

Kāpiti Coast District Council accepts no responsibility for incomplete or inaccurate information contained on this map. Use of this website is subject to, and constitutes acceptance of the conditions set out in our disclaimer. This publication is copyright reserved by the Kāpiti Coast District Council. Cadastral and Topographic information is derived from Land Information New Zealand, CROWN COPYRIGHT RESERVED.



0 25 50
Meters
Scale @ A4: 1:1,000

Date Printed: June 20, 2022

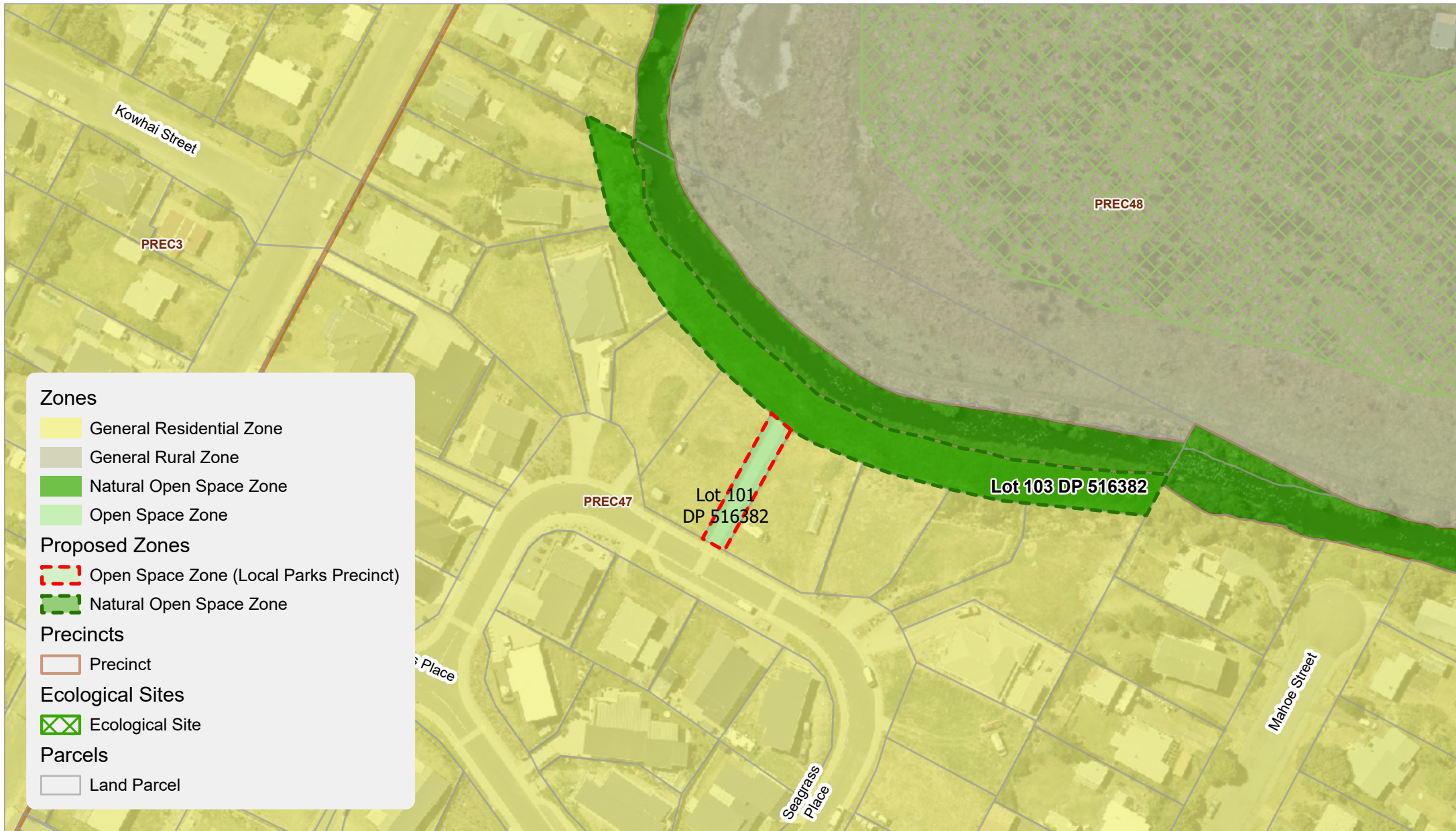
Kāpiti Coast District Council accepts no responsibility for incomplete or inaccurate information contained on this map. Use of this website is subject to, and constitutes acceptance of the conditions set out in our disclaimer. This publication is copyright reserved by the Kāpiti Coast District Council. Cadastral and Topographic information is derived from Land Information New Zealand, CROWN COPYRIGHT RESERVED.



0 10 20
Meters
Scale @ A4: 1:500

Date Printed: June 20, 2022

Kāpiti Coast District Council accepts no responsibility for incomplete or inaccurate information contained on this map. Use of this website is subject to, and constitutes acceptance of the conditions set out in our disclaimer. This publication is copyright reserved by the Kāpiti Coast District Council. Cadastral and Topographic information is derived from Land Information New Zealand, CROWN COPYRIGHT RESERVED.



0 25 50
Meters

Scale @ A4: 1:1,200

Date Printed: June 20, 2022

Kāpiti Coast District Council accepts no responsibility for incomplete or inaccurate information contained on this map. Use of this website is subject to, and constitutes acceptance of the conditions set out in our disclaimer. This publication is copyright reserved by the Kāpiti Coast District Council. Cadastral and Topographic information is derived from Land Information New Zealand, CROWN COPYRIGHT RESERVED.



0 25 50 Meters

Scale @ A4: 1:1,000

Date Printed: June 20, 2022

Kāpiti Coast District Council accepts no responsibility for incomplete or inaccurate information contained on this map. Use of this website is subject to, and constitutes acceptance of the conditions set out in our disclaimer. This publication is copyright reserved by the Kāpiti Coast District Council. Cadastral and Topographic information is derived from Land Information New Zealand, CROWN COPYRIGHT RESERVED.



0 10 20
Meters

Scale @ A4: 1:500

Date Printed: June 20, 2022

Kāpiti Coast District Council accepts no responsibility for incomplete or inaccurate information contained on this map. Use of this website is subject to, and constitutes acceptance of the conditions set out in our disclaimer. This publication is copyright reserved by the Kāpiti Coast District Council. Cadastral and Topographic information is derived from Land Information New Zealand, CROWN COPYRIGHT RESERVED.