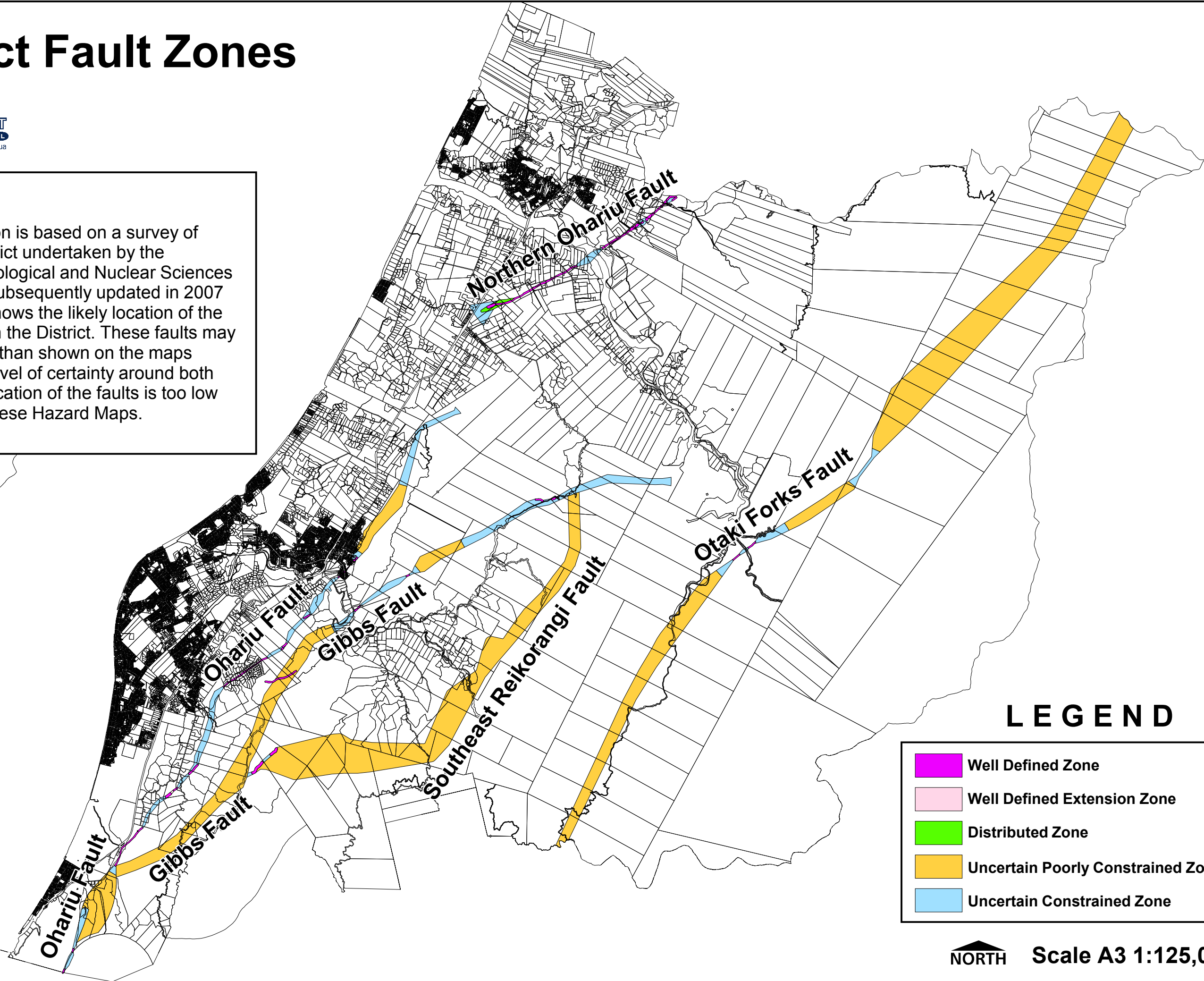


# District Fault Zones



**NOTES:**

This information is based on a survey of the Kapiti District undertaken by the Institute of Geological and Nuclear Sciences in 2003, and subsequently updated in 2007 and 2009. It shows the likely location of the known faults in the District. These faults may extend further than shown on the maps however the level of certainty around both the risk and location of the faults is too low to include in these Hazard Maps.



## LEGEND

- Well Defined Zone
- Well Defined Extension Zone
- Distributed Zone
- Uncertain Poorly Constrained Zone
- Uncertain Constrained Zone

**NORTH** Scale A3 1:125,000