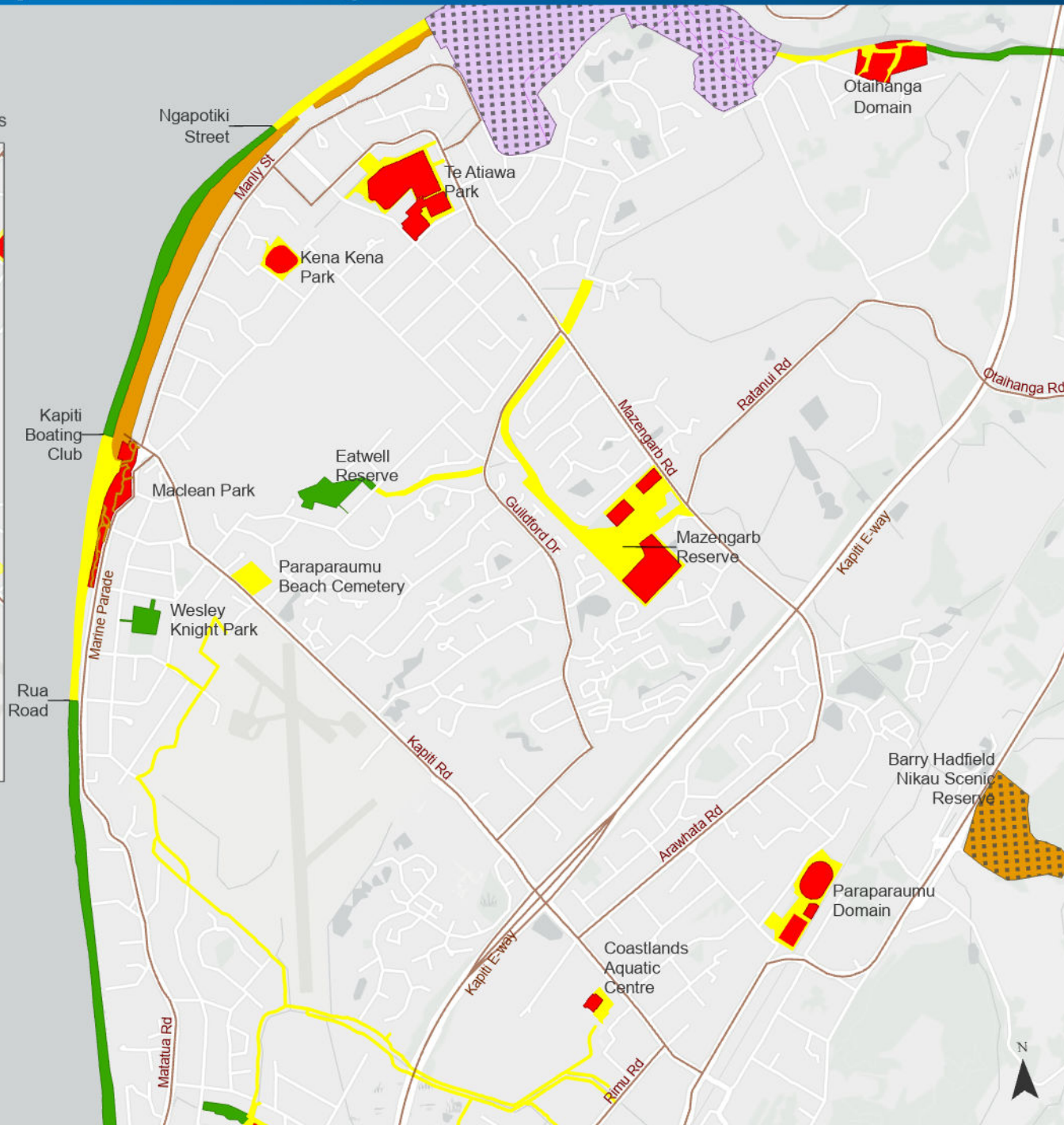
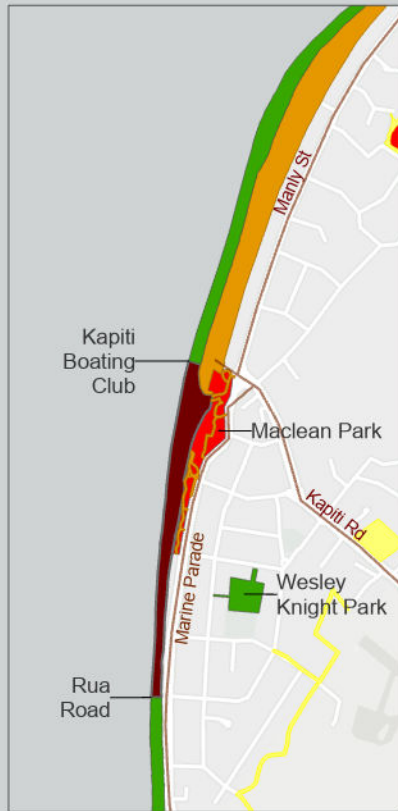


# Map 4: Paraparaumu Dog Access Areas

## Summer Dog Access

01 December - end of daylight savings



## Dog Access

- no dogs
- no dogs 10am-7pm, on-leash other times
- on-leash restricted
- on-leash
- on-leash 10am-7pm, off-leash other times
- off-leash
- Sensitive Site \*\*
- Waikanae Estuary Scientific Reserve - DOC regulations apply
- Queen Elizabeth Park - GWRC regulations apply

\* **On-leash restricted:** an area where dogs are permitted, provided they are under continuous leash control and remain on formed pathways and walking tracks.

\*\* **Sensitive Site:** an important habitat for wildlife (flora and fauna) vulnerable to harmful disturbance by dogs, or a culturally significant site that is vulnerable to harmful disturbance by dogs.

**DISCLAIMER:**  
While the map provides a specific indication of dog restrictions in certain parks, reserves and public areas within the District, the map does not cover every single open space. Please refer to the Schedules of the Dog Control Bylaw 2019 which provide a general statement on the dog restricted status of all public places, parks and reserves in the District that are not covered within these maps.

0 250 500  
Meters

Scale @A4: 1:25,000