

**Legend**

Indicative SH1 realignment options

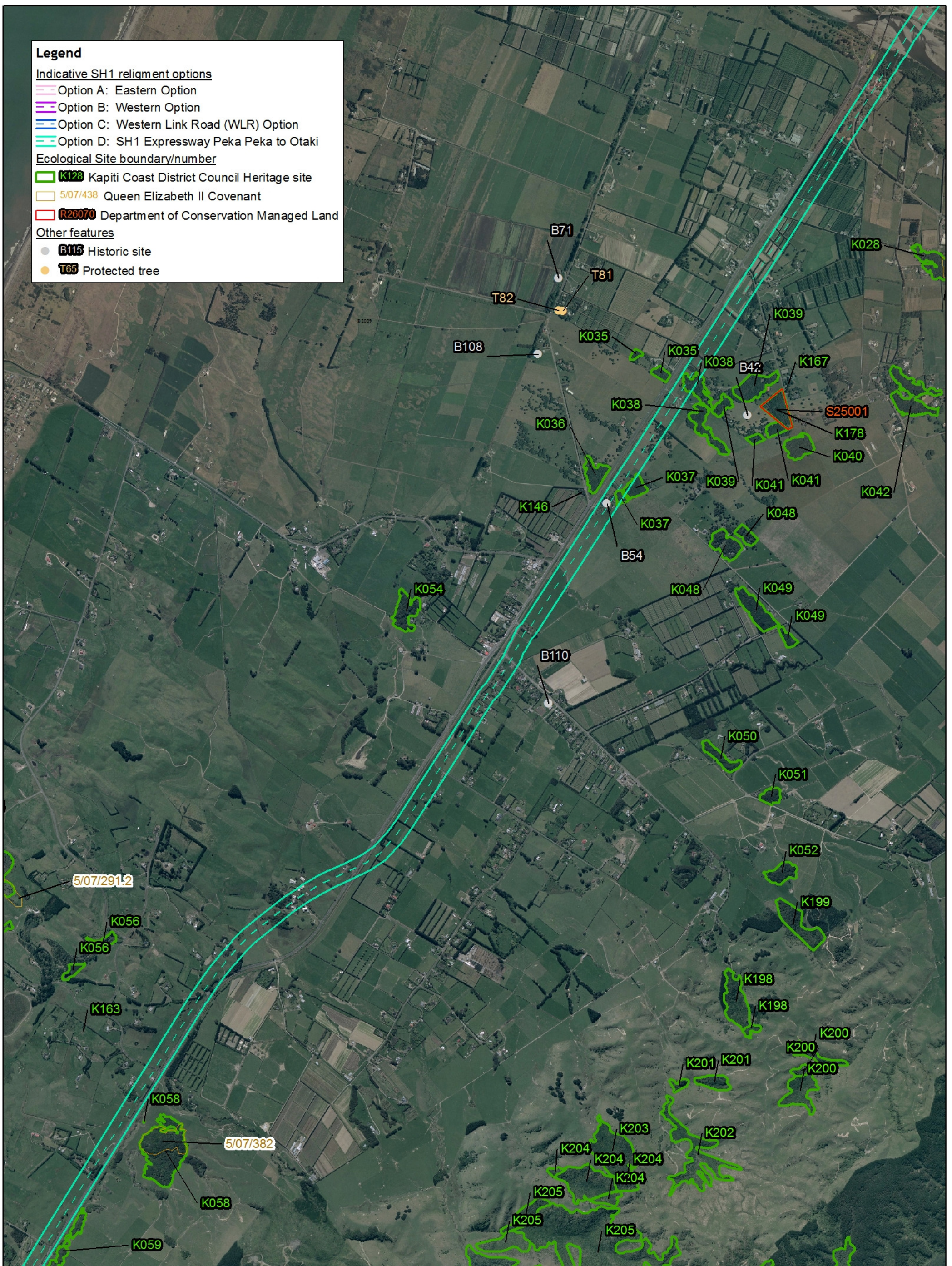
- Option A: Eastern Option
- Option B: Western Option
- Option C: Western Link Road (WLR) Option
- Option D: SH1 Expressway Peka Peka to Otaki

Ecological Site boundary/number

- K128** Kapiti Coast District Council Heritage site
- 5/07/438** Queen Elizabeth II Covenant
- R26070** Department of Conservation Managed Land

Other features

- **B115** Historic site
- **T65** Protected tree



**Figure 2b: Indicative State Highway 1 expressway realignment options (October 2009) in relation to Ecological Sites and other Heritage features**

0 500 1,000 m

**Data Acknowledgment**

Report: 2302  
 Client: KCDC  
 Ref: 05 0111  
 Path: E:\gis\Astrid van Meeuwen-Dijkgraaf\SH1 Realignment  
 File: SH1 Realignment Figures.mxd



Scale: 1:20,000  
 Date: 02/10/09  
 Cartographer: FM  
 Format: A3