

BEFORE A BOARD OF INQUIRY
MACKAYS TO PEKA PEKA EXPRESSWAY PROPOSAL

UNDER the Resource Management Act 1991

IN THE MATTER OF applications for resource consents and a
notice of requirement in relation to the MacKays to Peka Peka
Expressway Proposal

BY New Zealand Transport Agency

APPENDIX 3 - 4

**to Accompany the Evidence of Braddyn Thomas Coombs
| 5th October 2012**

APPENDIX 3 - KAPITI COAST DISTRICT - COASTAL ENVIRONMENT PHOTOGRAPHS - pg 1



Photograph 1 - view from Maungakotukutuku Road saddle towards Mataihuka



Photograph 2 - view from Trig Point QE Park looking south



Photograph 3 - view from Nikau Palm Rd



Photograph 4 - view from Kebble Rd, sand quarry in mid ground



Photograph 5 - view of Hemi Matenga and Otaihanga escarpment from Waikanae River mouth



Photograph 6 - view from Paekakariki escarpment



Photograph 7 - view from Amose St Park, vegetation on escarpment



Photograph 8- Coastal dominance area., Raumati Beach

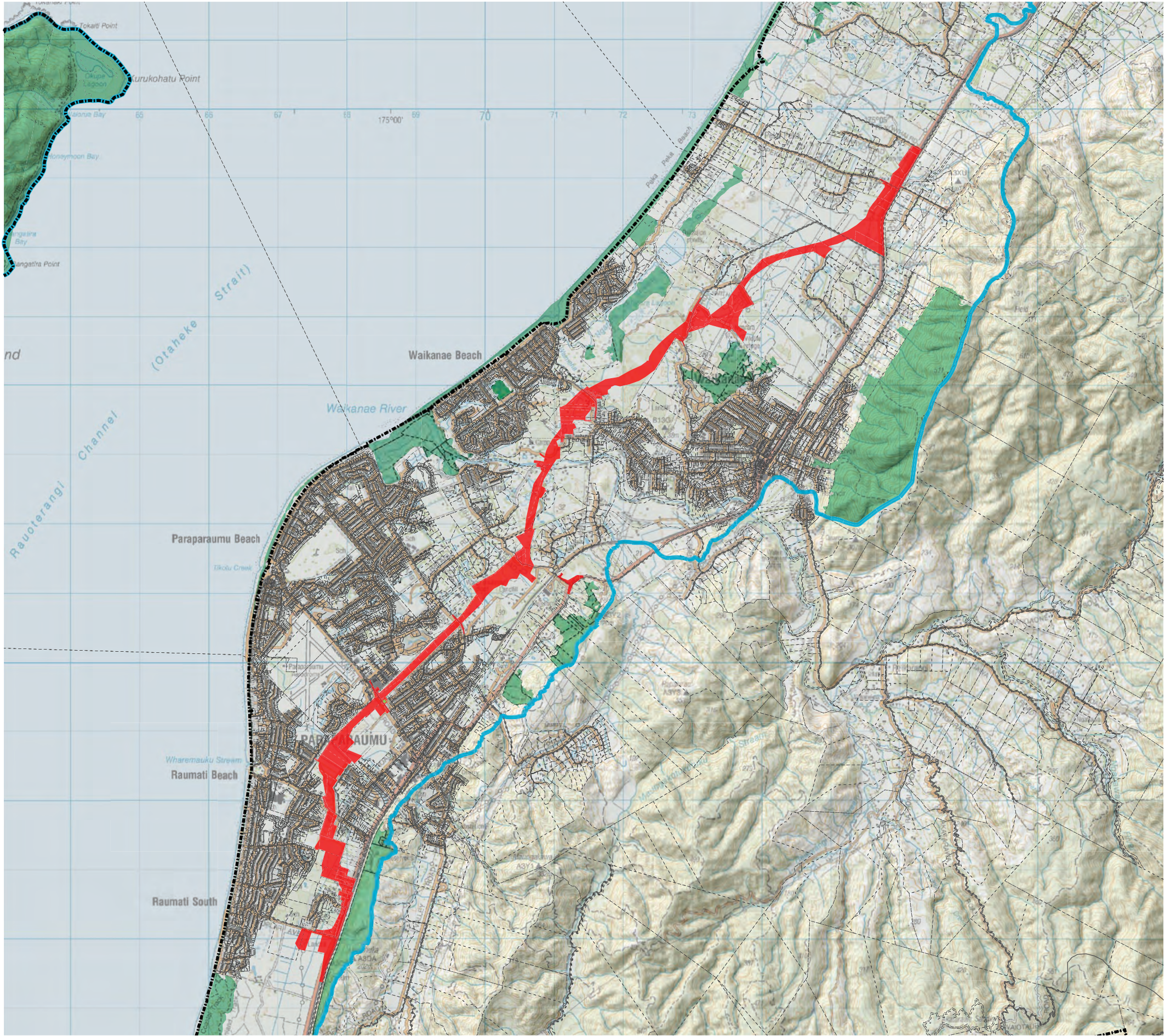


Photograph 9- Coastal dominance area., Waikanae River Mouth



Photograph 10- Coastal dominance area., QE Park

APPENDIX 4 - PROPOSED EXPRESSWAY AND COASTAL ENVIRONMENT MAP

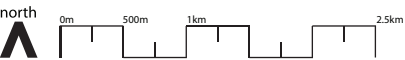


KEY PLAN



KEY

- KDCS BOUNDARY
- ROADS
- PARCELS
- COASTAL ENVIRONMENT EXTENT
- AREAS OF HIGH NATURAL CHARACTER
- PROPOSED EXPRESSWAY DESIGNATION (AUGUST 2012)



to Accompany the Evidence of Braddyn Thomas Coombs
| 5th October 2012