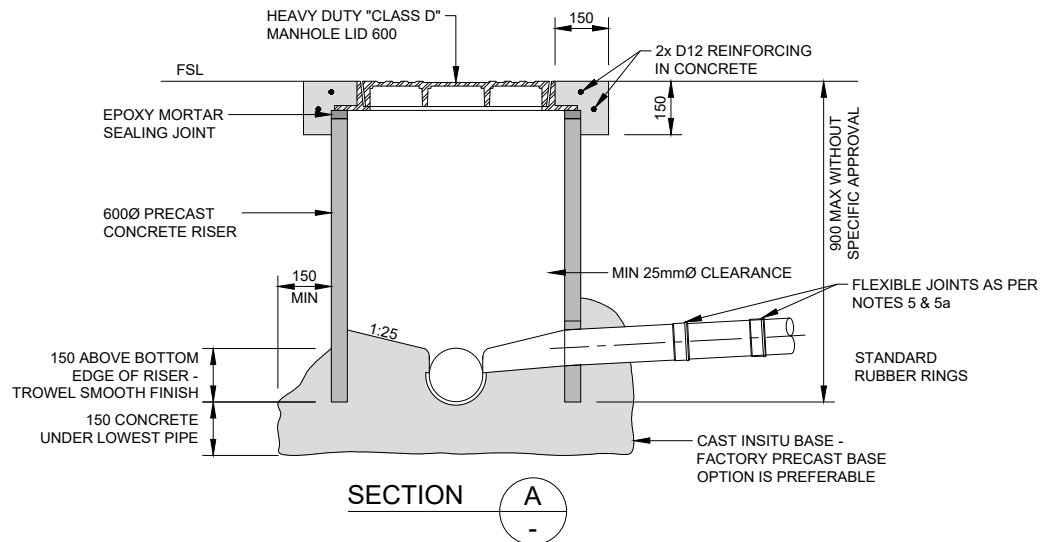
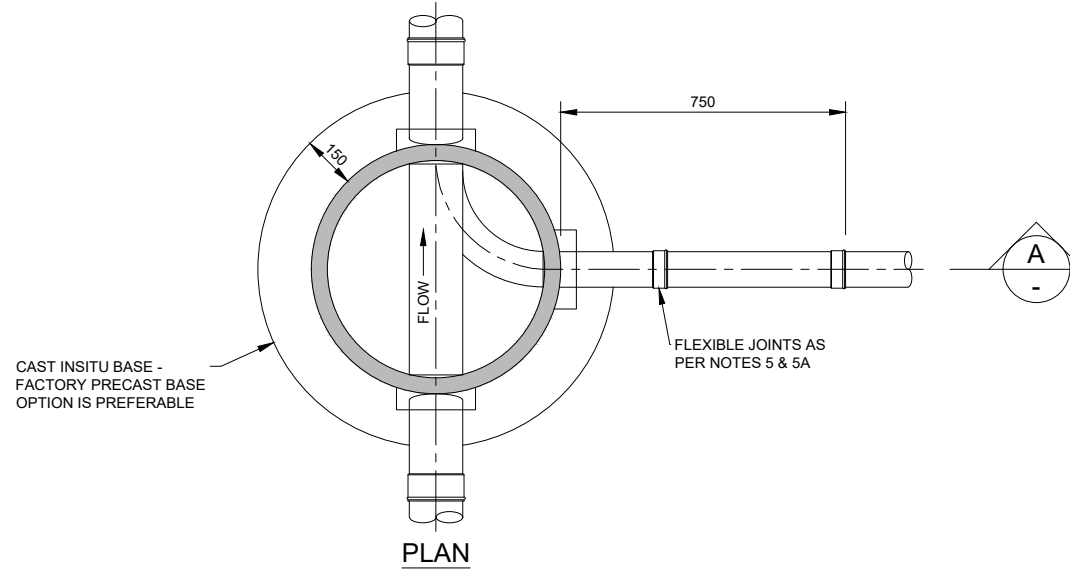


150mm  
100  
50  
10mm  
0



**NOTE:**

1. ALL DIMENSIONS IN MILLIMETRES.
2. MINI-MANHOLES ARE NOT TO BE USED ON PIPES OF GREATER DIAMETER THAN 150.
3. ONLY 100mm DIAMETER SERVICE CONNECTIONS INTO MINI MANHOLES. A PERMITTED LIMIT OF TWO CONNECTIONS.
4. ACCESS HOLES TO BE 600.
5. DOUBLE FLEXIBLE JOINTS, TWO WITHIN 750mm OF MANHOLES, TO BE INSTALLED WITH SN16 PVC PIPES.
- 5A. ONE FLEXIBLE JOINT ONE WITHIN 750mm OF MANHOLES TO BE INSTALLED WITH CONCRETE PIPES
6. POINTING BETWEEN CHANNEL HOLES SHALL BE DONE USING EPOXY MORTAR.
7. MIN COVER 900mm ON GRAVITY SEWERMAINS IN CARRIAGEWAY



**STANDARD DETAILS**

**MANHOLES  
PRECAST MINI-MANHOLES**

|          |              |               |              |
|----------|--------------|---------------|--------------|
| Drawn    | J. GOODMAN   | Designed      | J. SAXTON    |
| Approved | M. COLE      | Revision Date | OCTOBER 2020 |
| Scale    | NOT TO SCALE | Drawing No.   | KCDC-CM-007  |
|          |              | Revision      | R3           |