

KAPITI COAST : CHOOSING FUTURES

**COMMUNITY
OUTCOMES**

**WAIKANAE NORTH
LOCAL OUTCOMES**



Contents

	Page
Foreword from Alan Milne, Mayor, Kapiti Coast District	2
Introduction to Waikanae North Local Outcomes	3
Outcome 1: There are healthy natural systems which people can enjoy	4
Outcome 2: Local character is retained within a cohesive district	6
Outcome 3: The nature and rate of population growth is appropriate to community goals	8
Outcome 7: The District has a strong, healthy and involved community	10



Kapiti Coast District Council
in partnership with the community

Foreword – Alan Milne, Mayor, Kapiti Coast District

In 2003 – 2004, when the major initial consultation was undertaken to prepare our first Long Term Council Community Plan *Kapiti Coast: Choosing Futures*, we found we had a full set of broadly districtwide Community Outcomes as well as a number of chosen outcomes focused on specific localities and communities within the District.

Turning the seven principal districtwide outcomes into reality requires the Council to take the vision and develop timescales, funding and action plans. Among the action plans was the promise to work with local communities to give shape and form to their local outcomes.

This series of local outcome documents takes the districtwide outcomes and gives them a local focus. From there the specific local outcomes are presented along with programmes developed in consultation with the community to redefine the outcomes into practical visions and programmes for the future.

The vision for the Kapiti Coast's future is an exciting one but each community has its own view of the flavour and colour of that future. For some it is one of growth and expansion while for others growth must be limited but conditions provided for the community to continue to thrive.

To achieve the greatest long term benefit for the District, the way we proceed into the future needs to be focused and managed in a way that meets the needs of the people while retaining the essential character of the town and country.

The local outcome documents were developed through a series of meetings and design workshops involving many of the people and most of the significant groups in each community.

Their aim is to provide a framework or touchstone for options and actions for the future as local communities and the wider district evolve over time.

The challenge for each of us in our own community, for the District and the Council is to take these documents and their vision and ensure we shape a Kapiti Coast which is responsive to the needs of people and flexible enough to meet the forces that will form the District and this country in the years to come.



A handwritten signature in black ink, which appears to read 'Alan Milne'.



Kapiti Coast: Choosing Futures – Waikanae North Local Outcomes

Introduction

This document builds on *Kapiti Coast: Choosing Futures – Community Outcomes*. Under the umbrella of those broader community outcomes, it sets out a further layer of information about the community's vision for land to the north of Waikanae.

Residents from the Waikanae North community have participated in a number of design workshops/woolshed meetings since the initial *Choosing Futures* process in 2004. The material from these later meetings, along with the material from the original *Choosing Futures* workshops, builds up a clear picture of desired future direction.

The *Kapiti Coast: Choosing Futures – Community Outcomes* document covers areas such as the natural environment, growth management, protection of character, access, efficient use of resources (e.g. water, reduction of waste, energy), building local employment choices, creating a place that works for young people, and general enjoyment of what the Kapiti Coast offers. These are not repeated here in any detail.

This umbrella *Kapiti Coast: Choosing Futures – Community Outcomes* also acknowledges the particular character of communities and places along the Kapiti Coast. It does this in broad terms and much of the focus of the *Waikanae North Local Outcomes* document is to provide more guidance on what this means for Waikanae North.

Kapiti Coast: Choosing Futures – Community Outcomes and any *Local Outcomes* documents, have status under the Local Government Act 2002. Provided that the desired community

outcomes are consistent with a sustainable development approach and support the social, cultural, environmental and economic wellbeing of people and communities (both local and districtwide), the District Council and central government agencies must show how their actions progress this community vision.

While the broader *Community Outcomes* and *Local Outcomes* cannot bind an agency to a future direction or a particular level of investment, especially as these issues need to be balanced against needs and requirements in other areas and across the District as a whole, these documents together become the basis against which the performance of agencies in supporting the community's wellbeing can be assessed. They also form a more concrete basis for engagement between communities, agencies and institutions and discussion of particular issues.

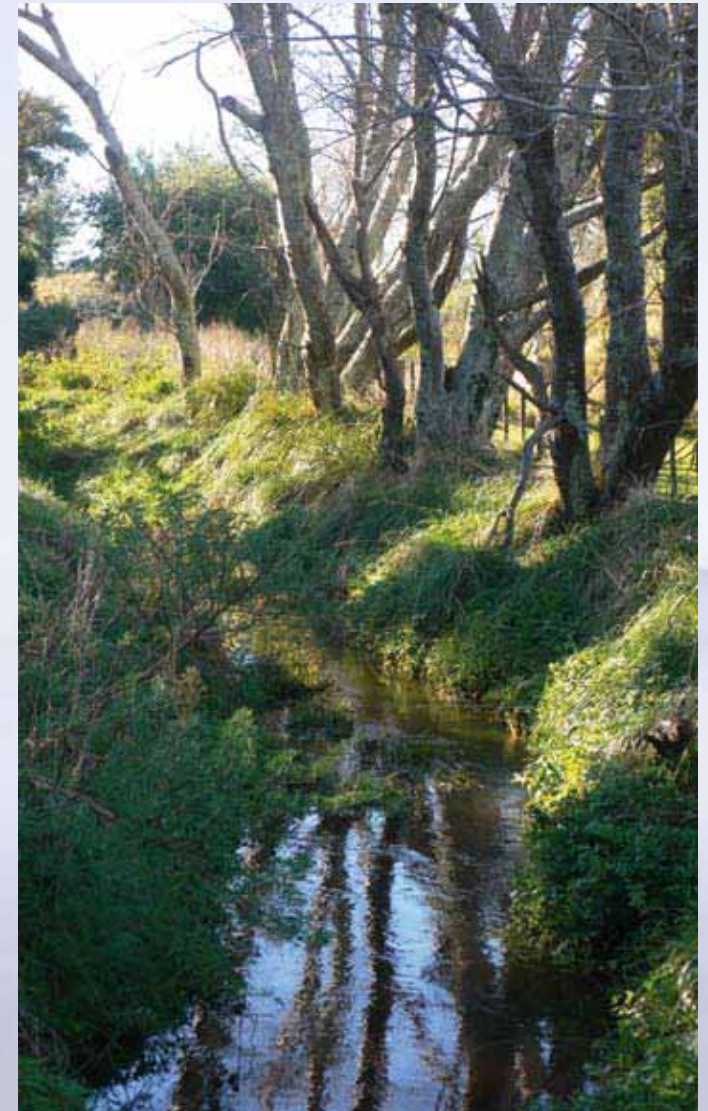
The *Community Outcomes* and the *Local Outcomes* are not just documents intended to shape the response of the Council and other agencies. They signal a collectively desired direction for the Waikanae North area as a place and as a community. In many cases the challenge is for the residents to become involved, to do things in their community to make things work. Waikanae North already has a community where people are involved in issues and decision making. Some people work very hard for the community. These Outcomes present a challenge for everyone into the future.

Kapiti Coast: Choosing Futures - Outcome 1

There are healthy natural systems which people can enjoy

This Outcome area contains a number of very specific detailed outcomes:

- key natural areas shaping the fundamental form and quality of the District's settlements, including:
 - the District's streams become major natural features in all the settled areas;
 - the District's urban parks become major features of the District as places of beauty and enjoyment;
- the Kapiti Coast becomes nationally recognised for an extensive cycleways, walkways and bridleways network:
 - a coastal walkway and cycleway from Paekakariki to Otaki and north;
 - extensive linkages through built up areas to key natural features such as rivers, streams and areas of bush;
 - good local linkages to schools and centres.
- that vulnerable areas of native vegetation and wildlife are protected including:
 - remaining dunes;
 - that people know about their natural areas and how to care for them.



Further Local Outcomes for Waikanae North

- 1.1 That landform dictates the shape and design of urban form.
- 1.2 That environmental enhancement of waterways, wetlands and natural areas is integrated with urban development.
- 1.3 That development of blue and green corridors (waterways and native bush areas) is a feature of any future development of the area.
- 1.4 That integration and protection of areas of cultural and environmental significance takes place.
- 1.5 That any urban development provides for walkable communities with generous provision for walking, cycling and horse riding trails.



Kapiti Coast: Choosing Futures - Outcome 2

Local character is retained within a cohesive district

This Outcome is concerned with recognition of the uniqueness and character of the string of communities along the coast while also concentrating on those things that link people together to create a sense of the whole. The former brings a focus on such things as local landscape, the style and scale of buildings, the design of local roads and the feel of place. The latter includes a focus on access, on community networks and on participation in decision making. In summary:

“that the role, nature and character of each of the Kapiti Coast’s towns and special areas is recognised and retained, and shapes the future form and quality of the District”

The umbrella document *Kapiti Coast: Choosing Futures – Community Outcomes* acknowledges all of the communities along the coast. It has this to say about building and development:

- that there is greater housing choice available which allows people to continue to live in their local communities over their lifetime;
- that the design of buildings and infrastructure is more in keeping with the character of the Kapiti Coast.

Since August 2003, the Waikanae North community has participated in a number of community design workshops which have defined the development principles, particularly in terms of the nature and character of any future urban form.



Further Local Outcomes for Waikanae North

- 2.1 That urban design / built form reflects local character with a mix of density and housing types.
- 2.2 There is limited provision of 'conventional' urban development close to the State Highway due to access and landform.
- 2.3 There is less intensive village / hamlet developments within the undulating dune and wetland areas further to the west.



Kapiti Coast: Choosing Futures - Outcome 3

The nature and rate of population growth is appropriate to community goals

This Outcome records the community's vision about how the District should develop and respond to population growth pressures over time. It is significant, given the population pressures on the District. The key points include:

- there is a focus on accommodation of local natural population growth in the short and medium term and that the Kapiti Coast does not simply react to external population pressure;
- intensification is explored in specific areas and where it clearly contributes to wider community goals of:
 - improved public transport;
 - supporting the vitality and character of a specified town centre;
 - providing housing choice.
- there is efficient use of existing infrastructure first, with increased focus on the potential for Otaki to absorb population growth in the short and medium term;
- where possible the location of new population supports the development of a local 'district' economy.



Further Local Outcomes for Waikanae North

- 3.1 There is provision for an 'urban edge' which limits the extent of urban development for at least the next 25 years.
- 3.2 That roads and access ways provide linkages (connectivity) but not a four-lane arterial.
- 3.3 That any future urban development is of low impact design including roads, stormwater treatment and water supply.
- 3.4 That major infrastructure issues are resolved before new land for development is released.





Kapiti Coast: Choosing Futures - Outcome 7

The District has a strong, healthy and involved community

This Outcome is concerned with the direct health and wellbeing of each person in the District, the sense of community and the general enjoyment of what the District has to offer, a sense of fun and happiness. Other Outcomes will contribute to this but there are specific concerns here that people have identified as important. These include:

- the main public places, including beaches, are safe and attractive;
- there is good easy access to the beaches for everyone at the main beach settlements, including older and disabled people;
- the District has high quality civic and local centres;
- there are extensive safe linkages within the District;
- good easy access to beaches;
- there is a greater range of housing available;
- there is a comprehensive planned approach to recreational facilities – including outdoor events and aquatic centres;
- there is a high level of community control over community decision making;
- people have access to information about their local community, district and wider world.



Further Local Outcomes for Waikanae North

- 7.1 That development within the Waikanae North area contributes to the wider community. For example, provision of schools, and community facilities (social equity).
- 7.2 That there is a high level of participation in community decision making within the Waikanae North community.



