



Standard Details and Specifications for Road Lighting Infrastructure

30 December 2018

VERSION 1.1

CONTENTS

1.	INTRODUCTION	121
2.	DEFINITIONS AND ABBREVIATIONS	122
3.	REQUIREMENTS IN ADDITION TO M30	123
3.1	Approved Luminaires	123
3.2	Luminaire selection	123
3.3	Lighting controllers and central management systems	123
3.4	Approved Columns and Outreach Arms	123
3.5	Selection of lighting categories	125
4.	APPENDIX I – APPROVED LUMINAIRES	127
5.	APPENDIX II – APPROVED COLUMNS AND OUTREACHES INCLUDING DETAILS	128
5.1	P-category column	129
5.2	V-category column	130
5.3	Column outreaches	131
5.4	Outreach on pole – P category	132
5.5	Outreach on pole – V category	133

1. INTRODUCTION

This standard serves as a basis of compliance for lighting projects carried out by the Kāpiti Coast District Council (*the Council*) as part of its works programmes, as well as the subdivision and development of land where these activities are subject to the Resource Management Act. The intended audience for this document are any parties that are commissioning or carrying out road lighting installations or related works within the road network that is or will be maintained by the Council.

It supplements the NZTA document "M30 - Specification and Guidelines for Road Lighting Design", which is the primary standard for road lighting in the Kāpiti Coast District, by specifying further local requirements and refinements. If not specified otherwise herein, the details of the M30 standard including all processes described and references to other documents within apply.

It is recommended that the user of this document first familiarise themselves with the M30 standard. See: <http://www.nzta.govt.nz/consultation/specification-and-guidelines-for-road-lighting-design/docs/m30-road-lighting-design.pdf>

Infrastructure to be installed as part of a subdivisions are controlled by the Subdivision and Development Principles and Requirements [(SDPR) KCDC's Code of Practice]. Street lighting requirements are set out under Part 3 D and Schedule 3 of the SDPR and generally require that the lighting is in accordance with AS/NZS 1158. This document supplements the SDPR in order to help standardise the products used and their installation.

The Council is presently modernising its entire road lighting asset to be consistent with M30 standard as part of a luminaire upgrade and replacement programme. LED technology is being used to reduce energy use, improve lighting quality and control and reduce the maintenance requirements.

2. DEFINITIONS AND ABBREVIATIONS

Refer to AS/NZS1158.0 for further information.

CCT	Colour-corrected temperature (unit - Kelvin [K])
Column	A dedicated support for a road lighting luminaire. Usually owned by the Council.
Pole	A utility pole suitable for attaching an outreach arm and road lighting luminaire.
Council	Kāpiti Council District Council
Electricity Network Operator	The owner of the electricity network (lines, poles, cables etc.) in KCDC area is Electra Ltd
LED	Light Emitting Diode
LV	Low voltage
P-category	'Pedestrian' category roads
V-category	'Vehicle' category roads

3. REQUIREMENTS IN ADDITION TO M30

3.1 Approved Luminaires

The Council has approved a subset of luminaires from the list of those accepted by NZTA for P and V category road lighting. Only these luminaires can be used on the Council's road network. They are detailed in Appendix I. These luminaires have been selected based on consistency with those supplied as part of Council's streetlight maintenance contract, and to increase standardisation of the streetlight stock in the district for ease of management. In addition to the M30 list, the Council specifies the accepted luminaire for pedestrian crossings in Appendix I.

Some of the approved M30 luminaires also have variants that emit light at warmer colour-corrected temperatures (CCT) than the ones in the M30 list. These variant luminaire models are approved by Council provided their CCT falls within the range 3,000 to 4,000K. There are also variants in terms of electrical power/light output intensity and light distribution ('optics').

Important note: warmer CCTs are given as lower temperature figures – i.e. a 3,000K CCT light source is 'warmer' (that is, it appears more yellow and less white-blue) than a 4,000K CCT light source

3.2 Luminaire selection

The power (wattage) and optic of a luminaire should be selected based on design considerations related to the achieving AS/NZS 1158 standard for road lighting, which in turn depends on other factors such as road width. For any new installation, developers must out a lighting design to ensure the AS/NZS 1158 standard is being met. Where work is being carried out on an existing area of road lighting (for example to replace luminaires, columns or outreaches as part of maintenance), the minimum acceptable standard is that the current lighting service level should be maintained.

3.3 Lighting controllers and central management systems

The Council has not yet selected a lighting controller or central management system for its luminaires, but may wish to install these in the future. To ensure ease of implementation of this in the future, all luminaires installed on the Council's road network are required to have a 7-contact point NEMA ANSI C136.41 receptacle, as described in section 16.3a) of the M30 standard.

3.4 Approved Columns and Outreach Arms

All columns and outreach arms to be designed to have an expected design life of 40 years, designed to meet loads imposed by AS/NZS 1170 and to have corrosion protection to AS/NZS 4680.

A producer statement is required for the manufacture of all columns and outreach arms.

When the electricity network operator (Electra) allows outreach arms to be attached to their distribution poles. The preferred outreach arm types are:

- 3.0m vertical extension and 2m outreach at 15° above horizontal bolted to pole via approved outreach arm plate, spacer and 2 x M16 bolts, washers and nuts. Spigot to be 150mm long and 42mm OD angled at 5° above horizontal.
- 3.0m vertical extension and 3m outreach at 15° above horizontal bolted to pole via approved outreach arm plate, spacer and 2 x M16 bolts, washers and nuts. Spigot to be 150mm long and 42mm OD angled at 5° above horizontal.
- 3.4m vertical extension and 4m outreach at 15° above horizontal bolted to pole via approved outreach arm plate, spacer and 2 x M16 bolts, washers and nuts. Spigot to be 150mm long and 42mm OD angled at 5° above horizontal.

-
- 4.4m angled outreach attached to pole and LV cross arm bolted to pole via approved outreach arm plate, spacer and 1 x M16 bolt, washer and nut plus “J” bolt attached to cross arm. Spigot to be 150mm long and 42mm OD angled at 5° above horizontal.

The electrical connection to the overhead conductor (demarcation point) must be to Electra’s standard.

All columns and outreaches will have a galvanised finish. Painted or powder-coated finishes are not permitted.

All column bases will be treated with the Oclyte Tuff Coat® protective treatment system, or equivalent.

All columns will be 7.3m in height for P category roads, and 10.0m in height for V category roads.

All column bases must be located with a minimum set back of 1m from the vehicle carriageway.

Standard drawings for all permitted columns and outreaches are in Appendix 2¹. Note that atop columns, only curved outreaches are permitted.

¹ Note that the design and specification of any attachments to poles (e.g. outreaches) must be approved by both the responsible person at Council (normally the contract manager for streetlight maintenance) and the electricity network operator.

3.5 Selection of lighting categories

Category	Road Name	Section start	Section end
V2	Kapiti Rd	Sh1	Friendship Place
V3	Arawhata Rd	N/A	
	Guildford Dr	N/A	
	Hinemoa St	Ruapehu St	Kapiti Rd
	Ihakara St	Sh1	Rimu Rd
	Kapiti Rd	Ocean Rd	Manly St Roundabout
	Manly St Roundabout	N/A	
	Marine Parade (Paraparaumu)	Kapiti Rd	Ocean Rd
	Ngaio Rd (Waikanae)	Sh1	Omahi St
	Raumati Rd	N/A	
	Rimu Rd (Raumati)	N/A	
	Te Moana Rd	Sh1	Rauparaha St
	Te Roto Dr (East)	N/A	
	Te Roto Dr (West)	N/A	
V4	Aotaki St	N/A	
	Aotaki St (North)	N/A	
	Beach Rd	N/A	
	Elizabeth St	Sh1	Winara Ave
	Golf Rd	N/A	
	Hinemoa St	Kapiti Rd	Tararua St
	Ihakara St	Rimu Rd	End
	Kapiti Rd	Friendship Place	Ocean Rd
	Maclean St	N/A	
	Main St	N/A	
	Manly St	Manly St Roundabout	Ngapotiki St
	Marae Lane	N/A	
	Marine Parade (Paraparaumu)	Ocean Rd	Wharemauku Rd
	Martin Rd (Paraparaumu)	Francis Rd	Gray Ave
	Matai Rd (Raumati)	N/A	
	Matatua Rd	N/A	
	Mazengarb Rd	N/A	
	Mill Rd	N/A	
	Ngarara Rd	Te Moana Rd	Belvedere Ave
	Parata St	Ngaio Rd	Kapanui Rd
	Poplar Ave	N/A	
	Ratanui Rd	N/A	
	Riverbank Rd	Sh1	Aotaki St
	Rosetta Rd	N/A	
	Ruapehu St	Hinemoa St	Ruahine St

Category	Road Name	Section start	Section end
	Seaview Rd	Howell Rd	Middleton Rd
	Tasman Rd	N/A	
	Te Moana Rd	Rauparaha St	Waimea Rd

Roads marked 'N/A' are the same category along their entire length.

If a road or section of road is not listed it is P-category. In rural areas, road lighting is generally not provided except for 'flag' lighting at intersections.

For new roads, the road lighting category should be selected in accordance with AS/NZS 1158 and in consultation with Council.

4. APPENDIX I – APPROVED LUMINAIRES

P-category

Manufacturer	Model and approved optics	Max system wattage	Approved CCT variants
Betacom	GL520P (Premium driver with 5032, 7012, 7022, 7032 & 7052 optics only)	Only 17W & 27W variants permitted	4000K
OrangeTek	Terraed Mini AP1 (MX1 & WX1 optics)	36W	3045K & 4000K
OrangeTek	Terraed Mini AP2 (Osram LEDs, PMMA Lens & AP2 Optic only)	34W	3045K & 4000K
Philips	Roadgrace BRP711 (DWP optic)	20W	4000K
Philips	Roadgrace BRP711 (DWP3 optic)	26W	4000K

V-category

Manufacturer	Model and approved optics	Max system wattage	Approved CCT variants
Philips	Luma 1 80 (R5 optic only)	135W	3000K & 4000K
Philips	Roadgrace BRP712 (DW1 optic)	120W	4000K
Schröder	TECEO 1 (5068 optic only)	113W	3000K & 4000K
Schröder	TECEO 1 Cree XPL (5118, 5163 & 5164 optics only)	150W	3000K & 4000K
Schröder	TECEO 2 (5102, 5103 & 5118 optics only)	279W	3000K & 4000K

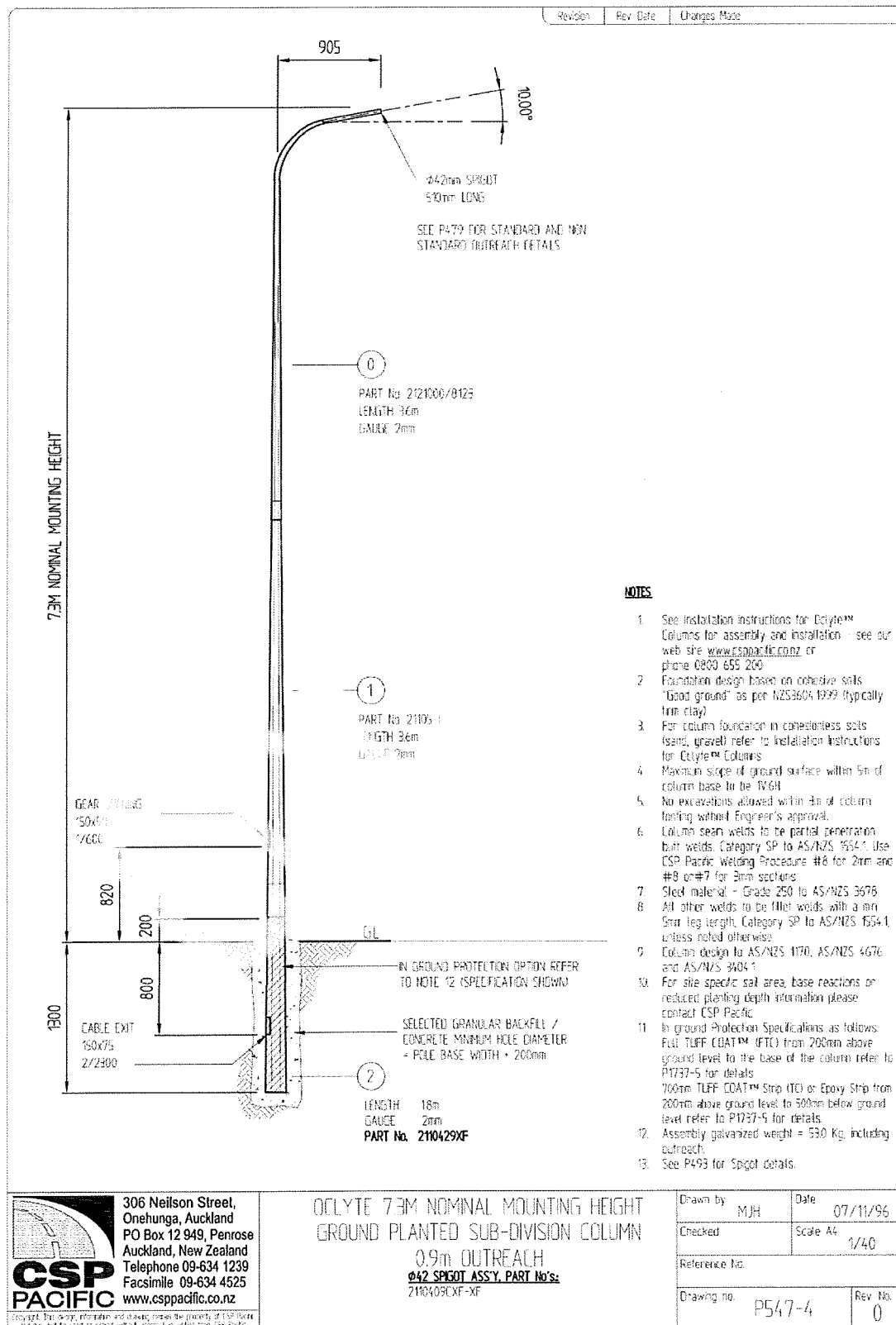
Pedestrian Crossings

Manufacturer	Model and approved optics	System wattage	Approved CCT variants
Philips	Roadgrace BRP711 ped crossing system (LED78/NW 70W PSD DWP3 only)	70W	4000K

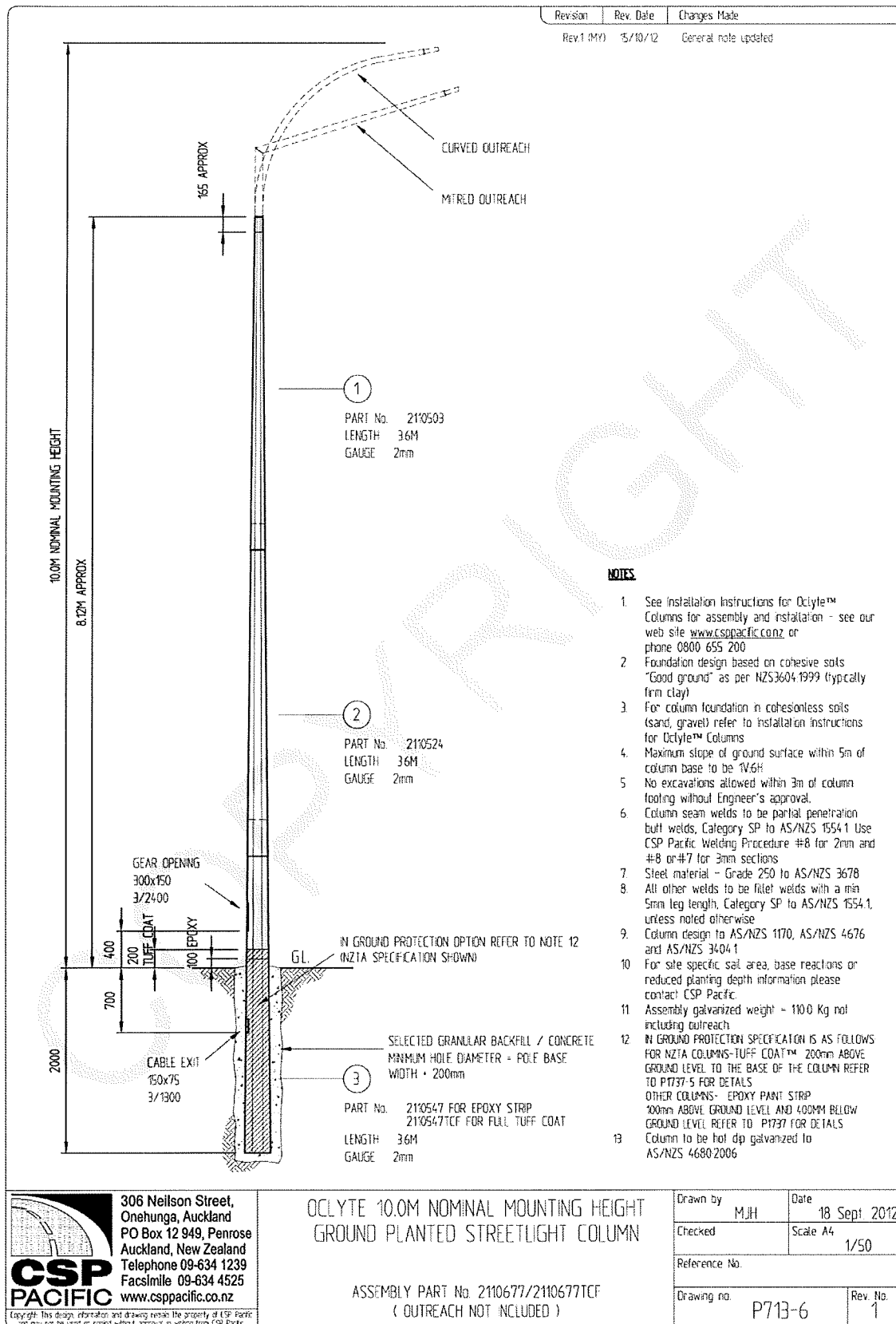
5. APPENDIX II – APPROVED COLUMNS AND OUTREACHES INCLUDING DETAILS²

² Drawings reproduced with permission

5.1 P-category column



5.2 V-category column



306 Neilson Street,
Onehunga, Auckland
PO Box 12 949, Penrose
Auckland, New Zealand
Telephone 09-634 1239
Facsimile 09-634 4525
www.cspacific.co.nz

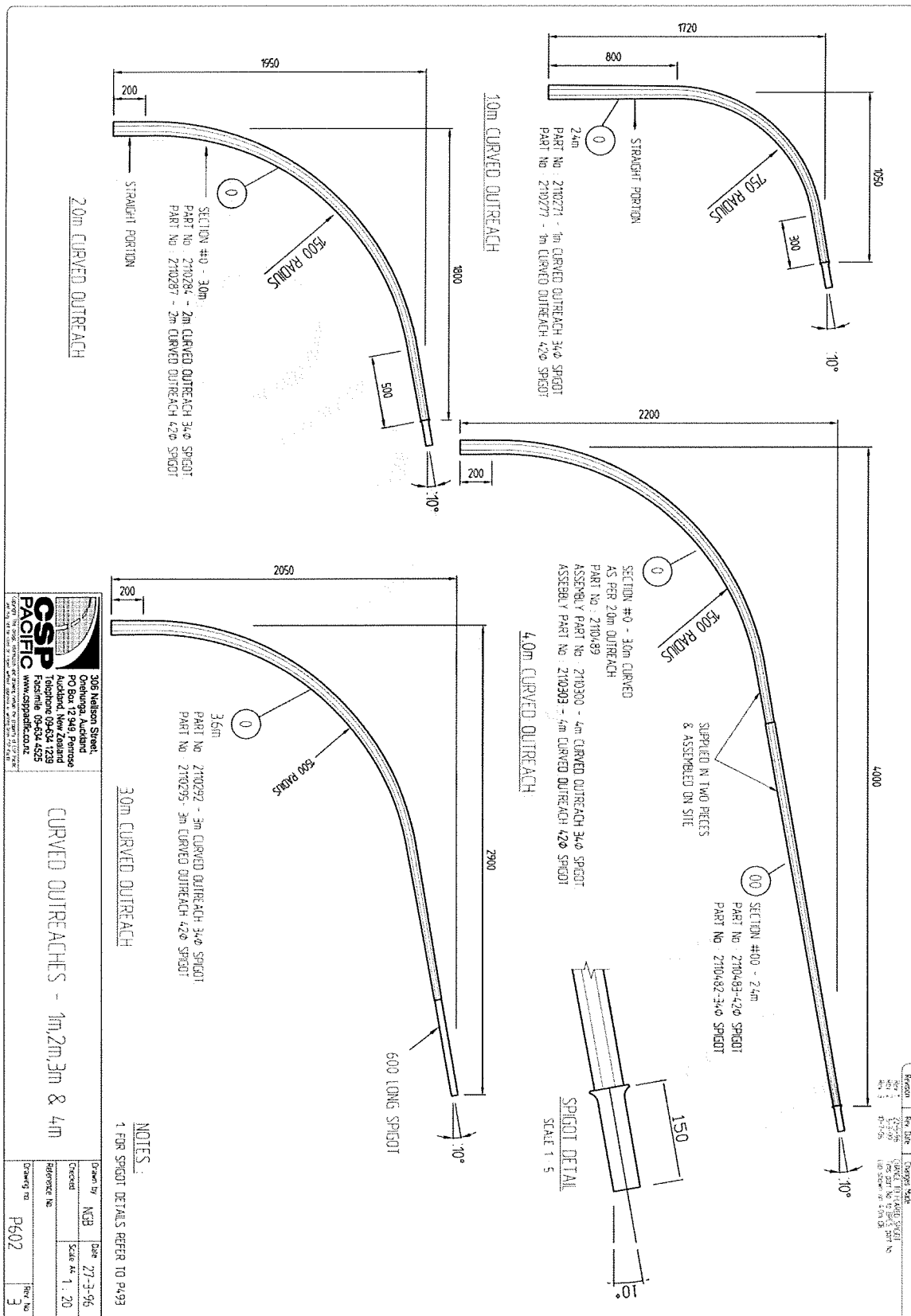
OCLYTE 10.0M NOMINAL MOUNTING HEIGHT
GROUND PLANTED STREETLIGHT COLUMN

ASSEMBLY PART No. 2110677/2110677TCF
(OUTREACH NOT INCLUDED)

Drawn by	MJH	Date	18 Sept. 2012
Checked		Scale	A4 1/50
Reference No.			
Drawing no.	P713-6	Rev. No.	1

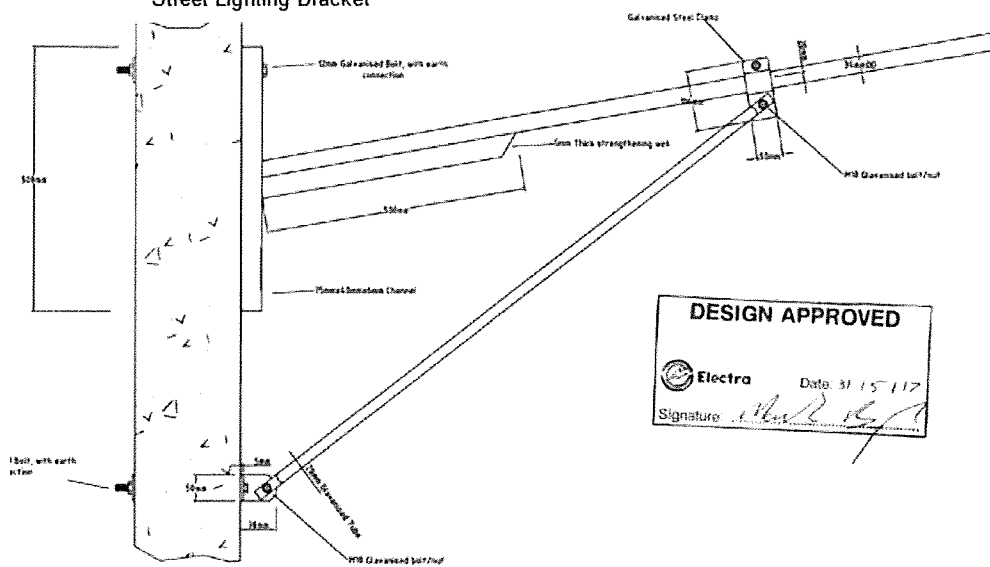
Copyright: This design, information and drawing remain the property of CSP Pacific and may not be used or copied without approval in writing from CSP Pacific.

5.3 Column outreaches



5.4 Outreach on pole – P category

**Horowhenua District Council – New or Replacement
Street Lighting Bracket**



5.5 Outreach on pole – V category

