



Ehara taku toa i te toa takitahi engari he toa takitini

— OUR STRENGTH DOES NOT COME FROM OURSELVES ALONE, OUR STRENGTH
DERIVES FROM THE MANY

Our Work

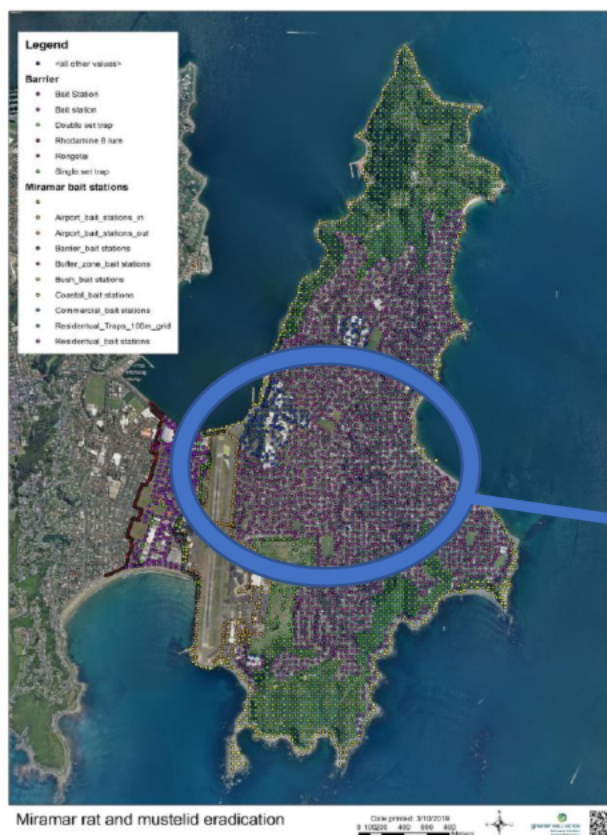
Our goal is to develop a set of recipes that don't exist





From an idea to action

- Being very clear on what we wanted to achieve – what was our end game
- Being very clear on the role of people and communities in this mission
- Giving people a voice and make it easy for them to see themselves as part of the Kaupapa
- Incorporating diversity – it took us to strange places
- Adapting continuously – reflections spreadsheet



0 90 180 360 Meters



Every single dot represents a
relationship we've had to
build

vimeo

Join

Log in

Pricing

Solutions ▾

Watch ▾

Search videos, people, and more 🔍

+ New video



ChillDocs: Rat Man

2 months ago | More



Chillbox

PRO

+ Follow

More from Chillbox

☒ Autoplay next video



ChillDocs: Rat Man

Chillbox

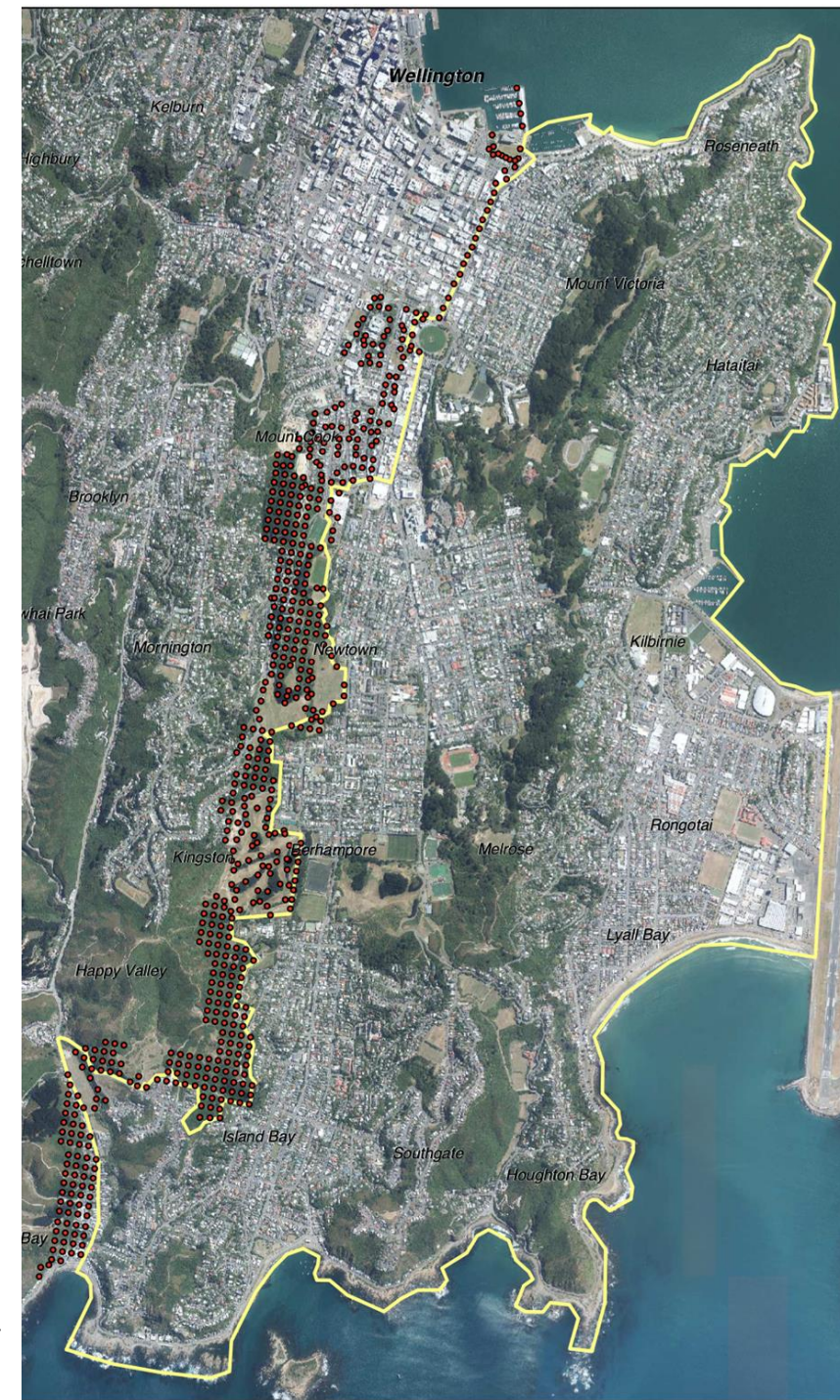
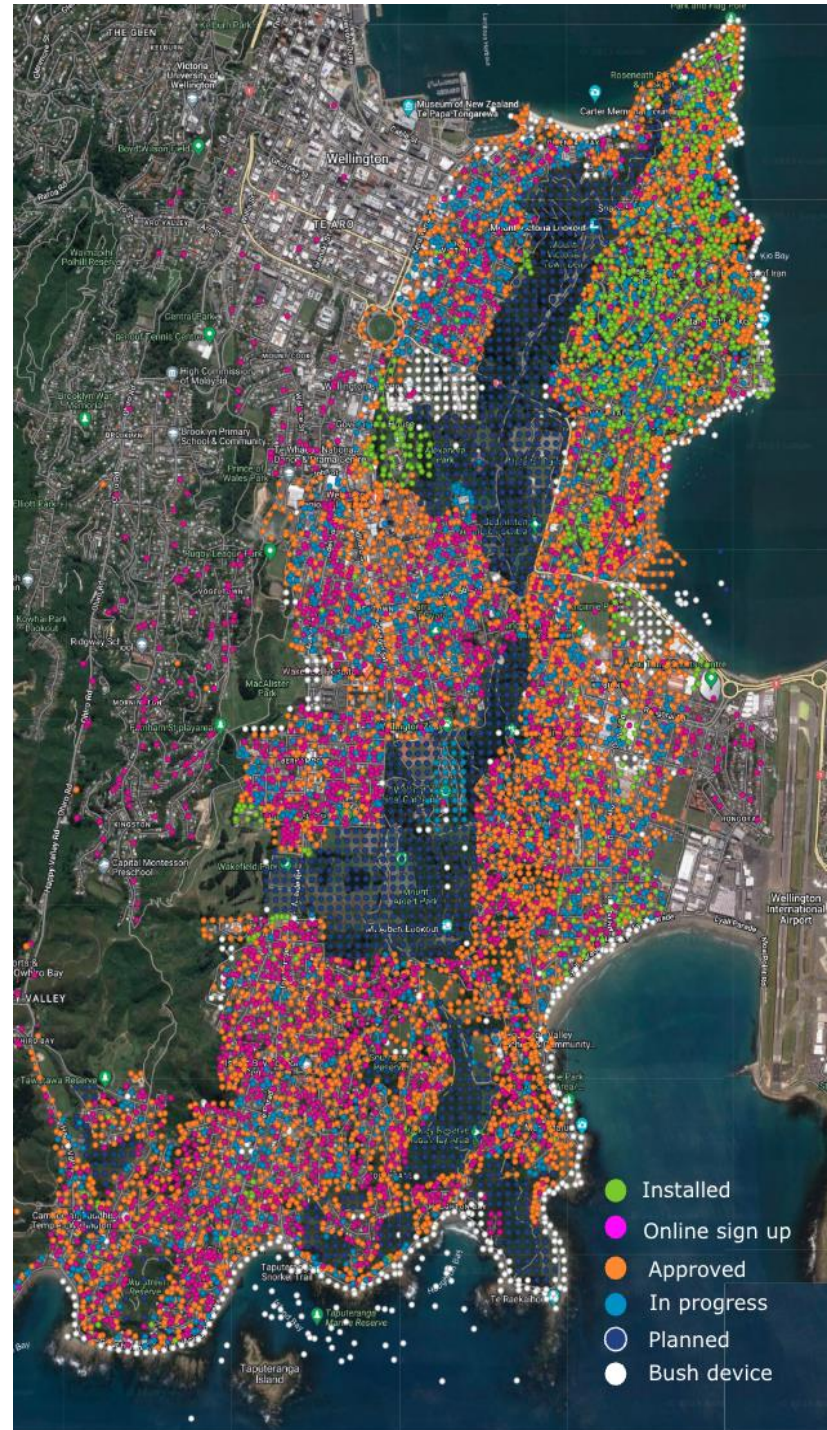
Phase 2 – this is now

- 15,000+ traps and bait stations required
- 10,000 individual permissions obtained

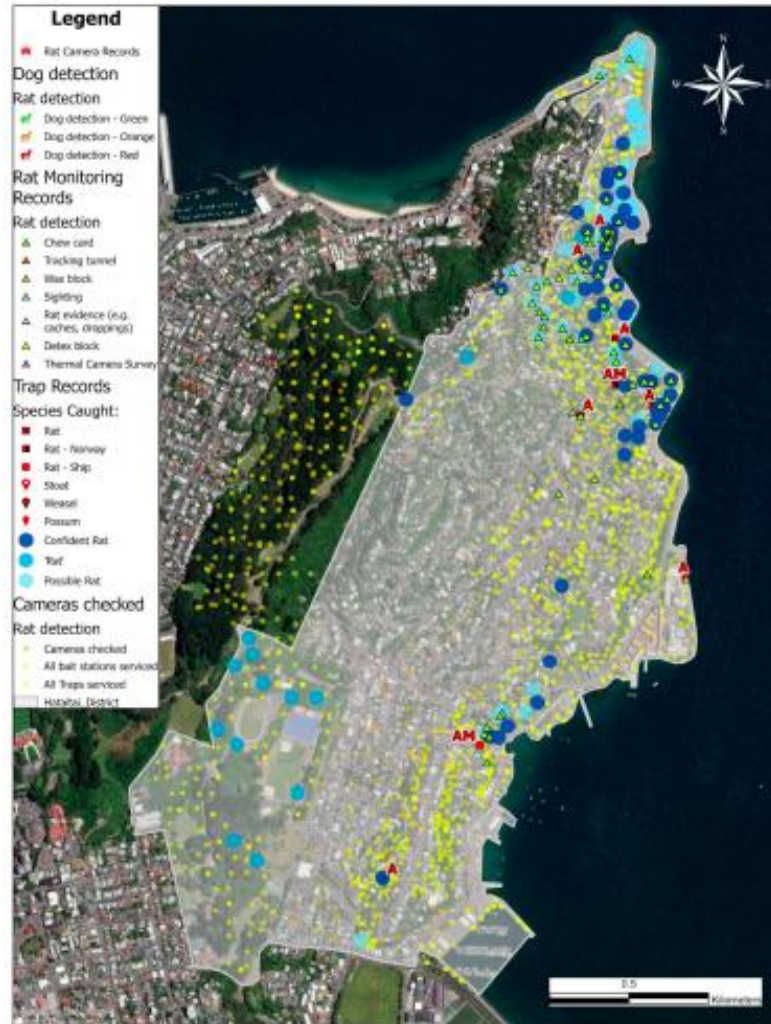
Phase 2 mapped permissions

- lock off against reinvasion of target species through buffer system.
- 7km long buffer system of 1000 traps and bait stations. Have this system entirely operated by 200+ highly trained volunteers

Phase 2 Buffer system



How we are different – Phase 2 progress



Hataitai Rat Data
11 June - 24 June 2024

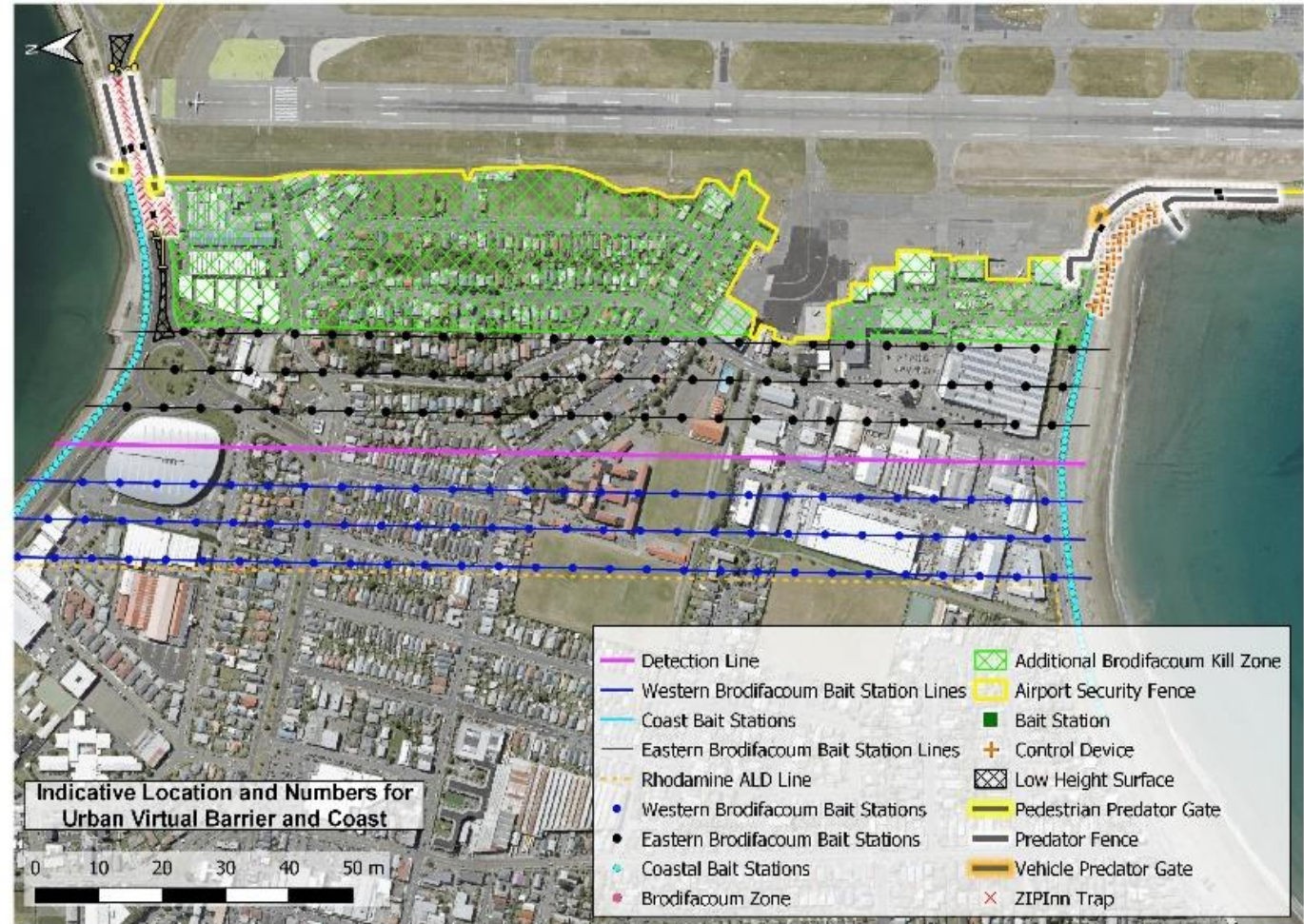


Phase 2 Operational Zones

Remove and Protect



Detection camera network



Miramar virtual barrier system

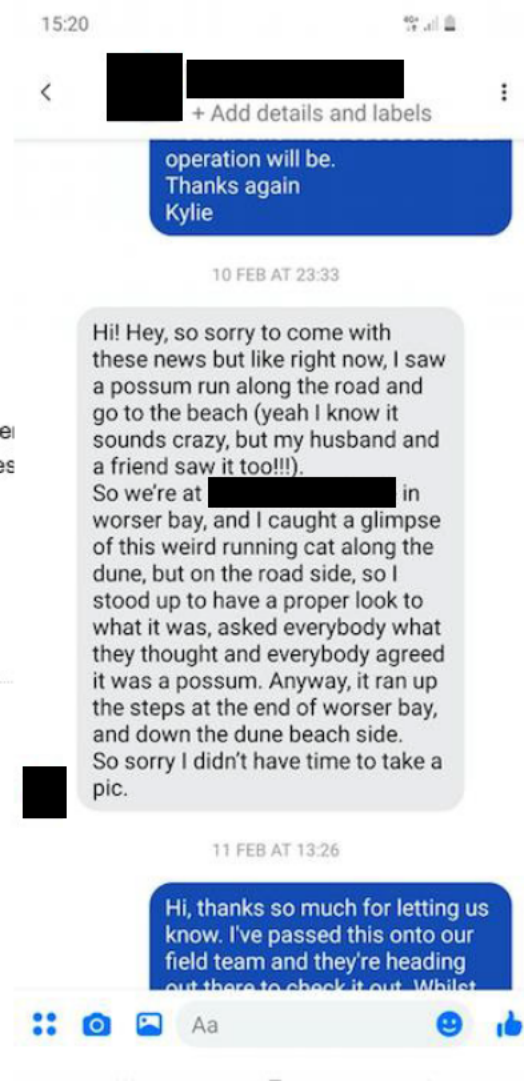
What does an exit strategy look like?

----- Forwarded message -----

From: [REDACTED]
Date: Fri, 19 Feb 2021, 18:17
Subject: FW: Mouse/ baby rat at [REDACTED]
To: <hello@pfw.org.nz>

Hi not sure if this is the right address
We have a bait station at our house and last time the checker said rats were just about gone I have seen evidence for ages the steps this morning see pic.

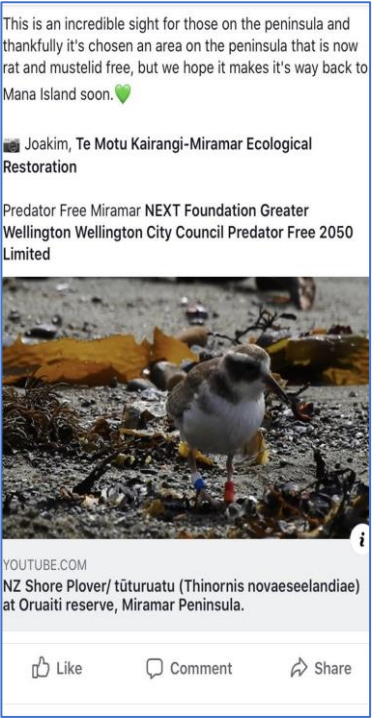
Cheers
[REDACTED]



So what is the ecological response?



KĀKĀ PHOTOGRAPHED BY CAROL IN HER STRATHMORE BACKYARD - POTENTIALLY THE FIRST PHOTOGRAPHIC EVIDENCE OF KĀKĀ (ON LAND) IN THE MIRAMAR PENINSULA



Relevancy to Kapiti??

- PFW is part of a national mission
- Start with strengths – what can the area leverage off
- Great work underway through partnership
- Clearly a building community desire
- Defendability – Akatarawas and the Coast



Final thoughts – a reality check

- Elimination is hard and it is expensive, but it does break from the current model of perpetual spend
- It's a big area, would need test cases and proof of concept to scale
- Rabbits, Rabbits, Rabbits
- Coordination is key, a backbone organisation with single focus
- Single species work is not a great focus from an elimination perspective
- The issue of introduced predator spread is becoming more profound, T Gully and Kāpiti Expressway
- Mana whenua are critical to this work

