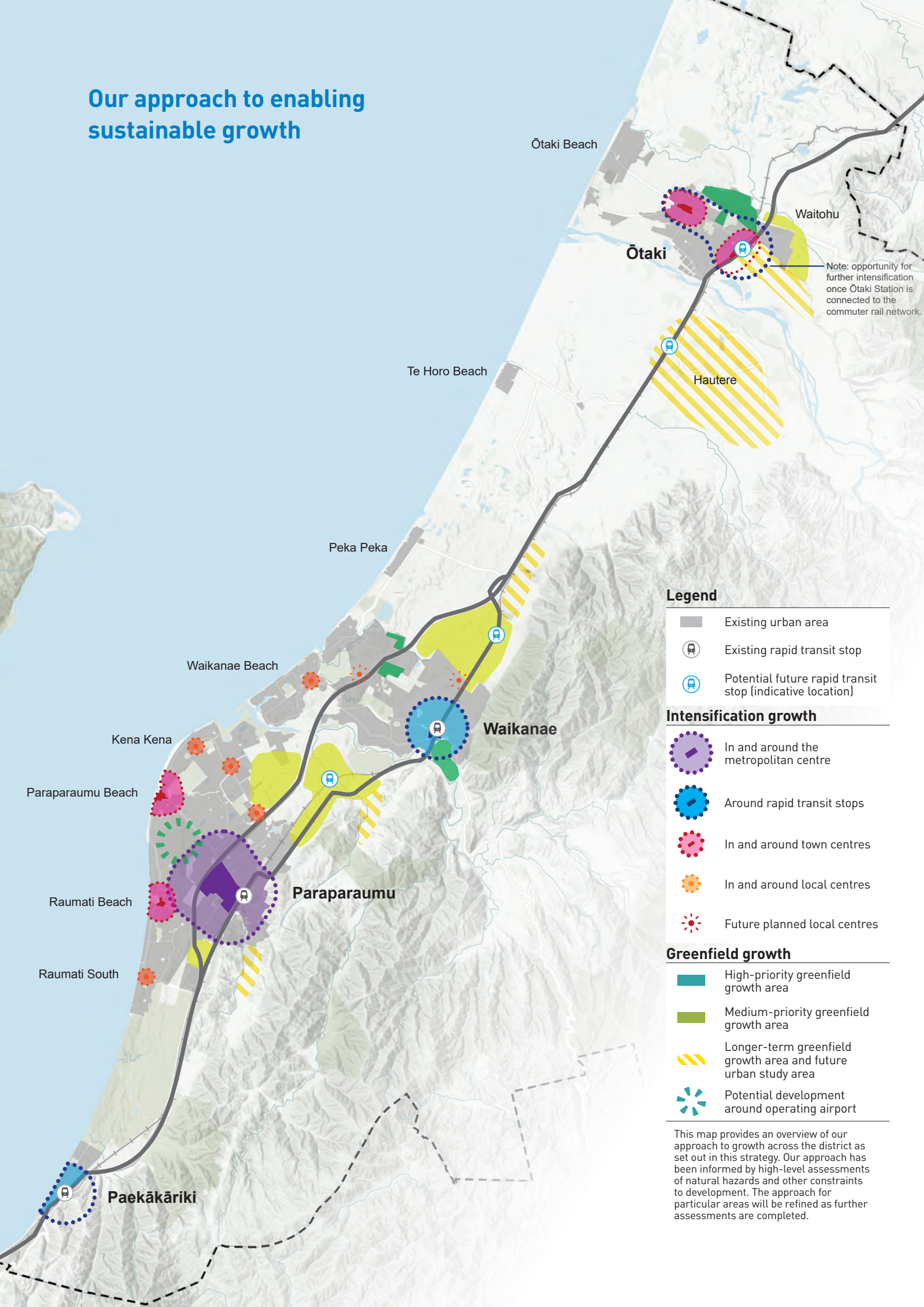





# Our approach to enabling sustainable growth








Note: opportunity for further intensification once Ōtaki Station is connected to the commuter rail network.

## Legend

-  Existing urban area
-  Existing rapid transit stop
-  Potential future rapid transit stop (indicative location)

## Intensification growth

-  In and around the metropolitan centre
-  Around rapid transit stops
-  In and around town centres
-  In and around local centres
-  Future planned local centres

## Greenfield growth

-  High-priority greenfield growth area
-  Medium-priority greenfield growth area
-  Longer-term greenfield growth area and future urban study area
-  Potential development around operating airport

This map provides an overview of our approach to growth across the district as set out in this strategy. Our approach has been informed by high-level assessments of natural hazards and other constraints to development. The approach for particular areas will be refined as further assessments are completed.