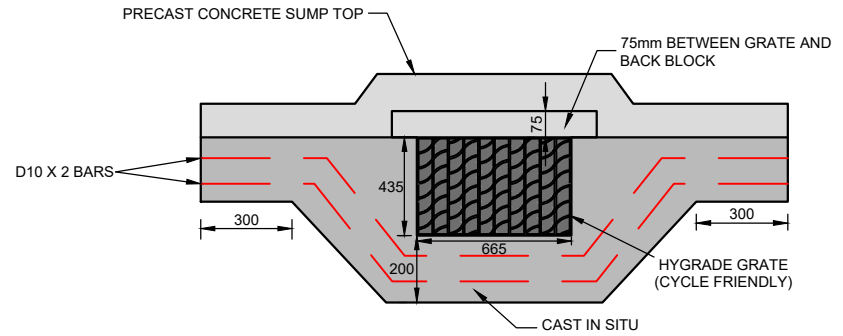
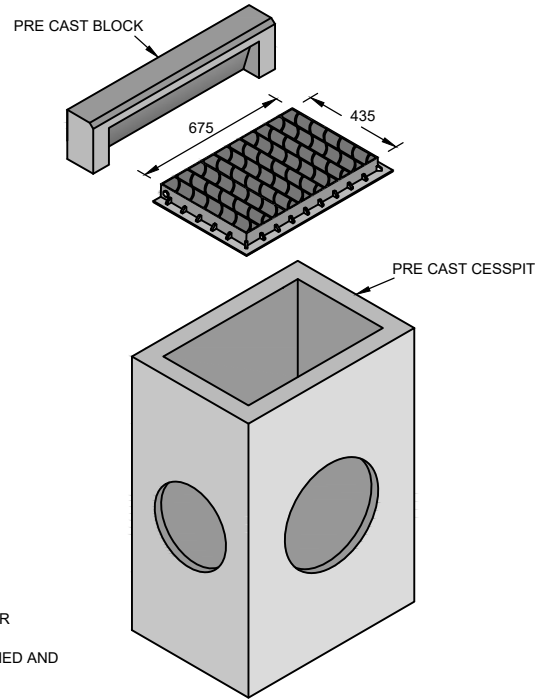
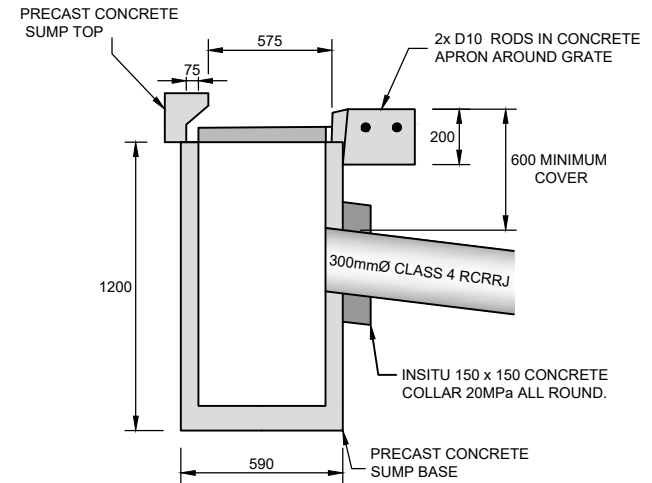
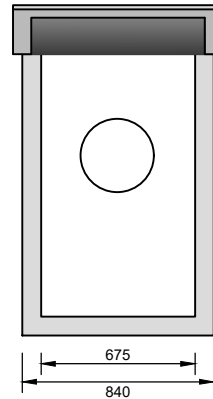


150mm  
100  
50  
0  
10mm



**NOTE:**

1. ALL CONCRETE PIPES MUST BE CUT AS PER MANUFACTURERS RECOMMENDATIONS.
2. CONCRETE PIPE FACES TO BE WIREBRUSHED AND EPOXIED.
3. SUMP DEPTH 1.2m.
4. DO NOT BOLT DOWN GRATES FOR CLEANING PURPOSES.
5. 2x D10 BARS IN CONCRETE APRON AROUND GRATE.
6. PRECAST SUMP BACK  
- STANDARD PRECAST FOR SMALL FLOWS  
- HIGHFLOW PRECAST BACK FOR HIGH FLOWS
7. HIGHFLOW PRECAST SUMP BACKS CAN BE USED ON SINGLE SUMPS IN RESIDENTIAL AREAS INSTEAD OF DOUBLE SUMPS WITH STANDARD PRECAST BACKS TO INCREASE FLOWS.
8. LITTER TRAPS TO BE INSTALLED IN SHOPPING AREAS AND CATCHMENT AREAS.
9. ENVIRO PODS TO BE INSTALLED WITH SOAKPITS.
10. IF PVC SN16 IS USED FOR STORMWATER, DOUBLE FLEXI JOINTS MUST BE INSTALLED AT MANHOLES. TWO FLEXIBLE JOINTS WITHIN 750mm. FLEXI JOINTS VARY ON SIZE OF PIPE.
11. CONCRETE PIPES REQUIRE ONE FLEXIBLE JOINT WITHIN 750mm OF ALL MANHOLES. FLEXI JOINTS VARY ON SIZE OF PIPE.
12. ALL SUMP LEADS CLASS 4 CONCRETE.
13. ALL SUMPS AND SUMP LEADS, MUST BE INCLUDED IN RAMM ASBUILT DATA.
14. FOR USE IN ALTERNATIVE LOCATIONS OTHER THAN RIGHT OF WAYS OR SOAKPITS, KAPITI COAST DISTRICT COUNCIL APPROVAL IS REQUIRED.
15. SUMPS MUST BE RELOCATED CLEAR OF PROPOSED VEHICLE CROSSING.



**STANDARD DETAILS**

SINGLE STANDARD SUMP  
RIGHT OF WAY / SOAKPITS

Drawn	Designed	
A. KOCHAR	J. SAXTON	
Approved	Revision Date	
G. O'CONNOR	APRIL 2021	
Scale	Drawing No.	Revision
NOT TO SCALE	KCDC-SW-005	R5