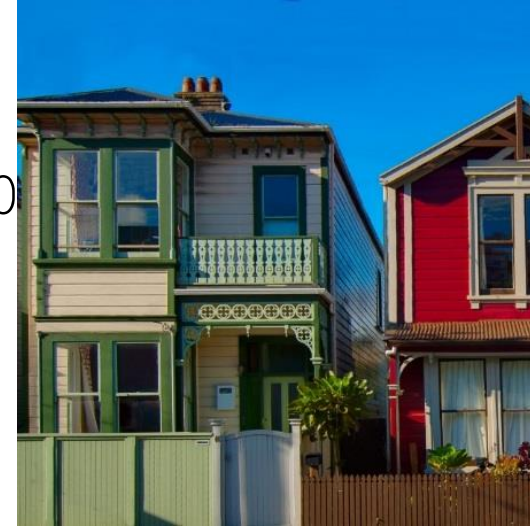


Everyone in the Wellington Region  
lives in warm, dry, safe housing by 20



**Phil Squire:**           **Chief Executive - Sustainability Trust**  
                                 **Chair – Community Energy Network**  
                                 **Member – Wgton Regional Healthy Housing Response Group (HHRG)**

**HHRG:**

- **Formed in 2017 following stakeholders meeting in Wellington city**
- **Collaboration and joint programmes to achieve vision (minimise silos)**
- **Steering Group – Councils, govt, health/social agencies, research, community, iwi**
- **Working Group – self-nominated “heavy lifters”**
  - **Hutt City, Otago U, Sust Trust, Regional Public Health, CCDHB, Greater Wellington**
- **Current workstreams:**
  - **Research study on housing situation and needs in region (in progress)**
  - **Development of strategy and annual plan (by June 2019)**
  - **Initial project development and delivery (from July 2019)**



# Housing quality in New Zealand

- Low quality housing results in poor health outcomes and higher energy costs
- **BRANZ House Condition Survey:**
  - 46% of bedrooms unheated
  - Mould visible in half of houses surveyed
  - 53% of homes underinsulated in ceiling or underfloor
  - Half of bathrooms and kitchens with no extractor fans
  - Rentals generally in poorer condition than owner-occupied
- **Health Outcomes**
  - 1600 excess winter deaths from respiratory and circulatory – 8000 admissions
  - Children admitted to hospital for diseases associated with healthy housing twice as likely to be readmitted
  - Housing sensitive hospitalisation rates strongly correlated with homes in higher deprivation index areas
  - MOTU study showed up to 6:1 Benefit:Cost for Warm Up NZ insulation/heating programme



# Housing Policy and Regulations

- **Residential Tenancies Act**
  - All rentals must be insulated by 30 June 2019 (some exceptions)
- **Healthy Homes Guarantee Act**
  - Insulation, heating, ventilation, draughts, moisture/drainage
  - 1 July 2019 – 30 June 2024
- **Electricity Price Review**
  - Cost of and access to electricity services
- **Rental WoF**
  - Wellington city – minimum standards for rentals
  - Voluntary – Pass/Fail
  - Partially overtaken by HHGA



# Current Healthy Homes Programmes

- **Well Homes**

- MoH funded programme targeting children at risk of rheumatic fever and housing-related health conditions.
- 800 assessments/year: Porirua/Wellington/Hutt Valley
- Regional Public Health, Otago U, Tu Kotahi Maori Asthma Trust, Sust Trust

- **Warmer Kiwi Homes**

- \$142M for insulation/heating 2018-2021
- 50,000 low-income homes – CSC/Dep 9-10 eligibility
- 67% - 100% for insulation; 67%/max \$2000 for heating (TBC by EECA)
- Approx 800/year in Wellington region – Electra support for Kapiti

- **Home Energy Savers**

- HES – 500/year detailed home assessments and Action Plans (Wgtn city)

- **HomeFit**

- National healthy housing standard from NZ Green Building Council
- Pass/Fail – advises on upgrades needed to comply



[homefit.org.nz](http://homefit.org.nz)



# Healthy Housing in Kapiti



- **Regional Healthy Housing Group project**
  - Initial project - Target high-needs area (Otaki?)
  - Consult with Council, local organisations, iwi
  - HHGA compliance for rentals (regulatory)
  - HomeFit compliance for owner-occupied (encouragement/financial support?)
  - Warmer Kiwi Homes subsidy support for insulation/heating (incl. Electra)
  - Greater Wellington targeted rate (\$3600/home for insulation)
  - Additional financial support needed for other measures
  - EECA stats for uninsulated homes in Otaki in Dep 9/10:
    - Rentals – 570
    - Owner-occupied – 900
- **Home Energy Savers – Kapiti**
  - Bespoke advice on insulation, heating, ventilation, energy use etc. Plus *Action Plan*
  - Same assessment protocol as Wgtn City (currently 500/year - \$70K funding)
  - Free to homeowner

