

**Paraparaumu Wastewater Treatment Plant –  
Community Liaison Group (CLG) Meeting  
Minutes of Meeting (FINAL - REISSUE)**

**Held:**

10 December 2025, 11AM – 12:30PM,  
EOC Briefing Room, Fytfield Place, Paraparaumu.

**Chair:**

Tess Drewitt (Compliance Manager, Council) (TD)

**Present:**

Phil Byrne (Waikanae Community Board) (PLB)  
Ramesh Pillai (Manager Water and Wastewater Services, Council) (RP)  
Peter Bollman (Waikanae Community Board) (PTB)  
Reuben Mackey (WWTP Supervisor, Council) (RM)  
Kim Mazur (Lab Manager, Council) (KM)  
Grant Stuart (WWTP Manager, Council) (GS)  
Ben Thompson (Water conservation & trade waste officer, Council) (BT)  
Robin Falconer (Friends of the Waikanae River) (RF)  
Zelda Edwards (Raumati Community Board) (ZE)  
Charlie Sleigh (Simpson Grierson – Lawyer for KCDC) (CS)  
Anna Muspratt (Resource Advisor, GWRC) (AM)

**Apologies:**

Sean Mallon (Group Manager – Infrastructure Services, Council)  
Ami Coughlan (Wellington Fish & Game Council)  
Pip Parkin (Regional Public Health)  
Richard Mansell (Waikanae Community Board)

**Distribution:** PWWTP CLG

Item	Action
<b>1 Welcome/ Introductions</b> <ul style="list-style-type: none"><li>TD welcomed everyone to the meeting.</li><li>Several new members attended the meeting, so the group did a roundtable of introductions.</li><li>TD referred new members to the Terms of Reference for the CLG, which was agreed by members in 2023. New members are welcome to review the TOR and make any comments/recommendations on improvements.</li></ul>	-
<b>2 Agenda Overview</b> <ul style="list-style-type: none"><li>TD presented an overview of the meeting agenda.</li></ul>	-
<b>3 Intro to CLG &amp; WWTP</b> <ul style="list-style-type: none"><li>TD provided a general overview of the CLG and WWTP. Members had just completed a site visit so have a good overview of how the WWTP operates. Key information is recorded in the presentation circulated with the minutes.</li></ul>	-

- RF queried what the dilution levels are along the Mazengarb Stream and within the Waikanae River. This information would be useful to communicate to the community when discussing the WWTP and effects on the watercourses. TD said these numbers are recorded in the resource consent application and she will summarise.
- Action:
  1. TD to circulate dilution information.
- *Update: The dilution ratios from the application are provided below. This shows that effluent represents 95-100% of flow at the discharge outlet, but this reduces to ~60% at Scaife Drive and 37% at the stream outlet to the Estuary. We do not have dilution ratios for the effluent and the Estuary, but this would be significantly less than 37% given the Mazengarb is only a minor contribution to Waikanae River flow.*

TD

### 5.3 Dilution and dispersion

Treated wastewater discharge to Mazengarb Stream makes up almost the entire dry weather flow in this branch of the stream (the WWTP branch). There is very little dilution until the WWTP branch joins the Lindale branch of the stream, which has an estimated mean flow of 60L/s (based on NZ River Map estimates: <https://shiny.niwa.co.nz/nzrivermaps>) giving an estimated 1.6-fold dilution (Table 5-4). An estimated 2.6-fold dilution is available in the lower catchment at the outlet to the estuary (the Otaihangā Oxbow).

Table 5-4: Estimated dilution of WWTP discharge in receiving waters of Mazengarb Drain

Location	Catchment area (ha)	Mean naturalised stream flow (L/s)	Mean WWTP discharge at 2018 (L/s)	Combined flow (L/s)	Dilution (x-fold)
WWTP Branch	44	6	115	121	1.05
Lindale Branch	308	60	0	60	n.a.
Combined flow at Scaife Drive	399	68	115	195	1.6
Stream outlet to estuary	954	185	115	310	2.6

**Figure 1: Dilution ratios from Paraparaumu WWTP water quality and aquatic ecology assessment of effects 2021**

- RP provided a summary of the improvements that have been or are being undertaken at the WWTP. This forms the basis of the short-term (15-year) resource consent application currently being processed by GWRC. All improvements are listed in the presentation. Key highlights:
  - Storm storage pond was upgraded, which has increased storm storage and resulted in no overflows of screened, untreated wastewater to the Mazengarb Stream nor soakage to the groundwater.
  - Council looking to upgrade the UV system. Current spec is considered sufficient, Council will upgrade to ensure 4-log reduction, 5-log reduction difficult to achieve given the already high level of treatment, so 4-log will be sufficient. Council waiting for GWRC to decide as part of reconsenting process before progressing with upgrade.
  - WWTP has undergone works to improve removal of nitrates. Council is trialling the next phase of reducing nitrates to within the wastewater standards limits.
- TD gave a status update on the reconsenting of the WWTP, as summarised in the presentation. Council is going through a reconsenting process with GWRC for a 15-year consent, which is due for a hearing early next year given ongoing iwi opposition. Government has since released the Wastewater Standards (WWS) and Council is evaluating options. The WWS do not provide an easier consenting pathway for the WWTP, as initially anticipated. The main benefit is the mandatory 35-year term, but Council would have to go back through the resource consent application process. RF requested if Council could provide the community an update on the status, and RP agreed to do this.

<ul style="list-style-type: none"> <li>▪ Action: <ul style="list-style-type: none"> <li>2. RP to ensure an update is published on Council's website.</li> </ul> </li> <li>▪ <i>Update: KCDC comms have now published information on the Paraparaumu WWTP page of the Council's website to keep the community informed: <a href="#">Wastewater treatment consenting - Kāpiti Coast District Council</a>. RP emailed RF on 12 December 2025 to confirm these communications, which were then released on 15 December 2025.</i></li> </ul>	<b>RP</b>
<p><b>4 Matters arising since previous meeting</b></p> <p><b>4.1 Update on re consenting</b></p> <ul style="list-style-type: none"> <li>▪ Update provided under Item 3. TD noted that Council would have decided on whether to proceed with current application or reapply under the WWS by next CLG meeting.</li> <li>▪ Action: <ul style="list-style-type: none"> <li>3. TD to update CLG at next meeting on status of WWTP resource consent application.</li> </ul> </li> </ul>	<b>TD</b>
<p><b>5 Review of Quarterly Report – Q1, FY25</b></p> <p><b>5.1 Q1 report summary</b></p> <ul style="list-style-type: none"> <li>▪ TD gave an overview of the compliance reports. The reports include a cover letter and spreadsheet detailing compliance over the quarter. TD sends to AM @ GWRC every quarter and copies in CLG members.</li> <li>▪ TD presented a summary of Q1 report. <ul style="list-style-type: none"> <li>• Council was fully compliant with all consent conditions in Q1 as demonstrated in pre-circulated Q1 compliance report.</li> <li>• No issues reported.</li> </ul> </li> </ul>	-
<p><b>6 CAPEX Activities – Q1</b></p> <p><b>6.1 Improvements plan – work underway</b></p> <ul style="list-style-type: none"> <li>▪ RP presented ongoing projects and works underway under Item 3 so this was a summary discussion of the works listed in the presentation.</li> </ul>	-
<p><b>7 CLG Feedback on Quarterly Report</b></p> <ul style="list-style-type: none"> <li>▪ No feedback.</li> </ul>	-
<p><b>8 Other CLG feedback</b></p> <ul style="list-style-type: none"> <li>▪ No other feedback raised.</li> </ul>	-
<p><b>9 Other matters</b></p> <p><b>9.1 WWTP re consenting</b></p> <ul style="list-style-type: none"> <li>▪ The group further discussed the re consenting of the WWTP, noting this project has already been discussed throughout the meeting.</li> </ul> <p><b>9.2 Waikanae Duplicate Wastewater Rising Main</b></p> <ul style="list-style-type: none"> <li>▪ TD gave a summary of the Council's project to consent the Waikanae Wastewater Duplicate Rising Main (WDWRM). The main is required to accommodate future growth in Waikanae. The middle section was installed in 2016 but without the necessary consents as Council was on the understanding it was authorised through Mackays to Peka Peka (M2PP). Iwi have an ongoing issue with the wastewater pipe running through part of the wahi tapu site identified in the District</li> </ul>	-

<p>Plan. Council is applying for retrospective consent for this section. Council is also applying for resource consent for new works in the Northern Section to connect the main to the Te Moana Rd pump station. Council completed works to connect the southern section in 2025.</p> <ul style="list-style-type: none"> <li>Due to ongoing opposition by iwi, the works in the Middle Section might need to be limited notified to iwi. Council prepared a comprehensive options assessment to include with the application, which signalled that the current alignment is the only viable option. Other options would involve still running through the wahi tapu site or needing a new crossing over Waikanae River. The presentation includes a map with alternative options considered. RP noted that the requirement is becoming urgent and new developments can only proceed once the pipe has been developed.</li> </ul>	
<p><b>10 Recommendations / Next Meeting</b></p> <ul style="list-style-type: none"> <li>Summary of Actions: <ol style="list-style-type: none"> <li>TD to circulate dilution information (complete).</li> <li>RP to ensure an update is published on Council's website (complete).</li> <li>TD to update CLG at next meeting on status of WWTP resource consent application.</li> </ol> </li> <li>Next meeting March 2026</li> </ul>	<p><b>TD</b></p> <p><b>RP</b></p> <p><b>TD</b></p>

**Minutes by:** Tess Drewitt, Kāpiti Coast District Council

# Paraparaumu Wastewater Treatment Plant– Community Liaison Group (CLG) Meeting

Wednesday 10 December 2025 – 11am – 12:30pm  
EOC Building, Fytfield Place, Paraparaumu.



The logo for Kāpiti Coast District Council is located in the bottom right corner. It features a stylized yellow mountain range above the text 'Kāpiti Coast' in a large, bold, black font, with 'DISTRICT COUNCIL' in a smaller, bold, black font below it. At the very bottom, in a small font, is the Māori name 'He Huri Whakamuri, Ka Tōna Whakamua'.

1

---

---

---

---

---

---

# Welcome / Introductions

---

---

---


---

---

---

# Today's Agenda

1. Welcome / Introductions
2. Agenda Overview
3. Intro to CLG & WWTP
4. Matters arising from previous meeting
5. Review of Q1 FY2025-26 Report
6. Work undertaken in Q1 & ongoing
7. CLG Feedback/Observations
8. Other matters
9. Recommendations / Next Steps

The logo for Kāpiti Coast District Council is located in the bottom right corner. It features a stylized yellow and blue graphic of a coastline or hills above the text "Kāpiti Coast" in a bold, sans-serif font, with "DISTRICT COUNCIL" in a smaller font below it.

- 3

---

---

---

---

---

---

## Introduction



4

---

---

---

---

---

---

---

## Background

- The Council provides all wastewater (WW) services to the community.
- The Paraparaumu WW network, including piped, pump stations & WWTP, services Waikanae, Raumati and Paraparaumu.
- Services a population of 50,000+; growing to 60,000+ by 2054.
- Otaki community is serviced by Otaki wastewater network and WWTP.



5

---

---

---

---

---

---

---

## Community Liaison Group

- KCDC holds various consents with GWRC to operate the WWTP.
- Consents require KCDC to maintain a CLG for the following purpose:  
*"Provide a forum for the informal exchange of compliance information between the Council and members of the CLG"*
- Not a decision-making group.



6

---

---

---

---

---

---

---

## Community Liaison Group

- CLG current Terms of Reference, 2023.
- Groups invited to attend the CLG include:
  - Mana whenua
  - Fish & Game
  - Friends of the Waikanae River
  - Community Boards
  - Regional Public Health
  - DoC
  - GWRC
  - Other organisations (Waikanae Estuary Care Group, Forest & Bird)



7

---

---

---

---

---

---

---

## About the WWTP



8

---

---

---

---

---

---

---

## Paraparaumu WWTP

- Opened 1980, upgraded in 1994 and 2001
- Treatment process includes:
  - Inflow screening and grit removal,
  - Biological nutrient removal system,
  - Multi-stage activated sludge process,
  - Clarification, and
  - UV disinfection.
- Treated effluent discharges to Mazengarb.
- Sludge dried and landfilled.



9

---

---

---

---

---

---

---



10

---

---

---

---

---

---

---

---

## Storm Storage Capacity

- Wet weather flows are diverted from inlet to a recently lined stormwater storage basin.
- Provides storage capacity of 40,000m<sup>3</sup> preventing overflows to Mazengarb Drain.
- When wet weather subsides, flows are automatically returned to WWTP for full treatment.

11

---

---

---

---

---

---

---

---

## Storm Storage Pond

- Upgraded and lined in 2023



Pond operating in August 2024

12

---

---

---

---

---

---

---

---



## Oduor Control

- Odour blower at inlet.
- Wet scrubbers / bio filters for sludge odour control.
- No odour issues in recent times.



13

---

---

---

---

---

---

---

---

## Effluent discharge

- Treated effluent discharges to the Mazengarb (consented max. 18,600m<sup>3</sup>/day).
- Effluent is high quality b/c WWTP's treatment methodology is industry best practice.\*
- Mazengarb is highly modified and influenced by several contaminant inputs (incl. landfill, SW).
- WW discharge contributes 90-95% of it's flow in upper reaches.
- Discharges to Waikanae Estuary ~4km.

\* Mott Macdonald, 2022. Kapiti Coast WTP discharge consent renewal – Wastewater elements review. 5 December 2022



14

---

---

---

---

---

---

---

---

## Sampling Points



15

---

---

---

---

---

---

---

---

### Improvements Phase

- Upgrading storm storage.
- Inlet upgrades proposed.
- RAS & A-Recycling system upgrades.
- Sludge bed decommissioning.
- pH dosing.
- Hydraulic debottlenecking.
- UV upgrade.
- Riparian planting.
- Waikanae Duplicate Rising Main.



16

---

---

---

---

---

---

---

---

### WWTP reconsenting

- KCDC consents expired in December 2022, operating under s. 124 RMA.
- Notified resource consent application to go to hearing.
- KCDC evaluating options under the new Wastewater Standards.
- Te Atiawa continued objection to the discharge.



17

---

---

---

---

---

---

---

---

### Matters arising from previous meeting

- No outstanding action items.
- Ongoing request to update CLG on reconsenting process.



18

---

---

---

---

---

---

---

---

## Q1, FY2025-26 resource consent compliance

19

### Key conditions

- Max. discharge consented to Mazengarb Stream of 18,600m<sup>3</sup>/day.
- Discharge quality parameters (BOD, TSS, E.Coli, pH, ammonia, nitrates, DRP, heavy metals, DO).
- Odour management.
- Monitoring and reporting:
  - Quarterly reporting to GWRC on quality and quantity
  - Complaints/Incident register

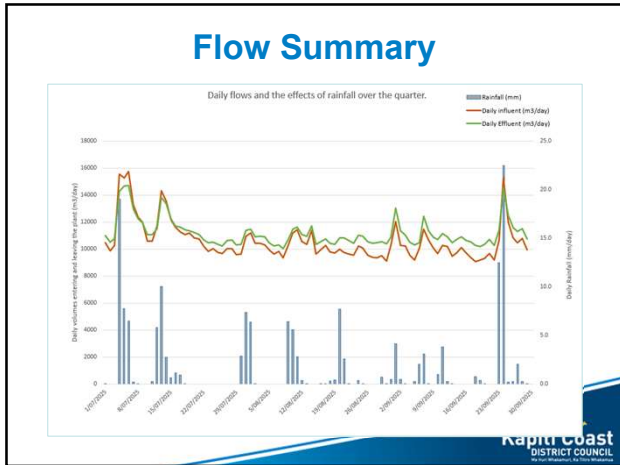
20

### Q1 Compliance Summary

WWTP full compliance with all consent conditions:

Summary Compliance Report for Quarter 1			
	July 2025	August 2025	Quarter 1
WWTP10149 (2016)			
Purpose for Which Right is Granted	0	0	0
Condition 18 (a) (i)	4.90	5.37	4.89
	0	0	0
Condition 18 (a) (ii)	4.22	4.11	4.74
	0	0	0
Condition 18 (a) (iii)	0	5	4
	0	0	0
Condition 18 (a) (iv)	7.3	7.1	7.4
Condition 18 (a) (v)		0.96	
Condition 18 (a) (vi)		7.22	
Condition 18 (a) (vii)	Y	Y	Y
Condition 18 (a) (viii)	Y	Y	Y
Condition 18 (a) (ix)	Y	Y	Y
Condition 18 (a) (x)		7.31	
WWTP10150 (1987)			
Purpose for Which Right is Granted	Compliant?	Compliant?	Compliant?
Condition 18 (a) (i)	0	0	0
WWTP10149 (2016)			
Purpose for Which Right is Granted	Compliant?	Compliant?	Compliant?
Condition 2	0	0	0
WWTP10150 (1987)			
Purpose for Which Right is Granted	Compliant?	Compliant?	Compliant?
Condition 18 (a) (i)	Y	Y	Y
WWTP10151 (2016)			
Purpose for Which Right is Granted	Compliant?	Compliant?	Compliant?
Condition 5	0	0	0
Condition 13	Y	Y	Y
Condition 17 & 18	0	0	0

21



22

---

---

---

---

---

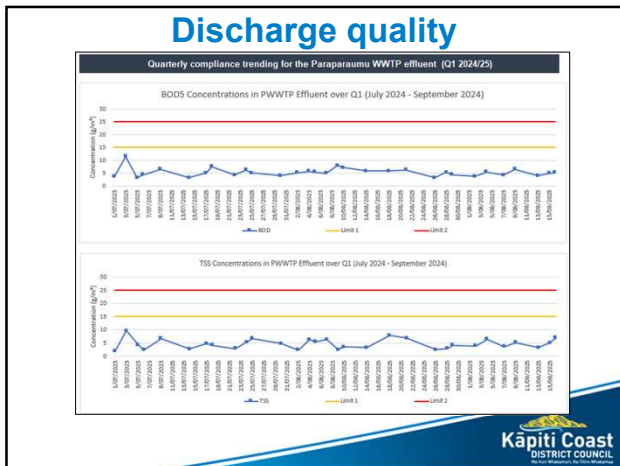
---

---

---

---

---



23

---

---

---

---

---

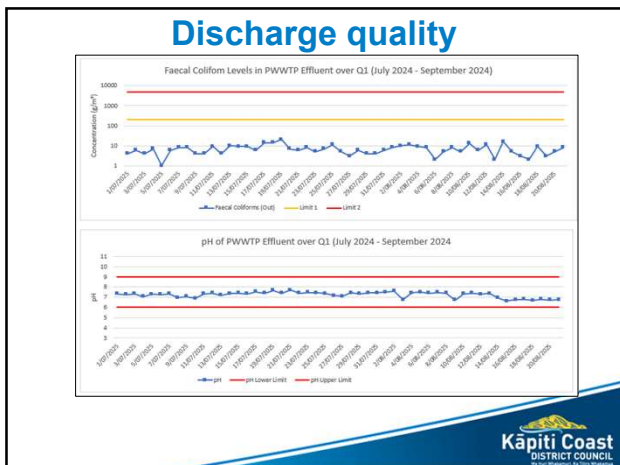
---

---

---

---

---



24

---

---

---

---

---

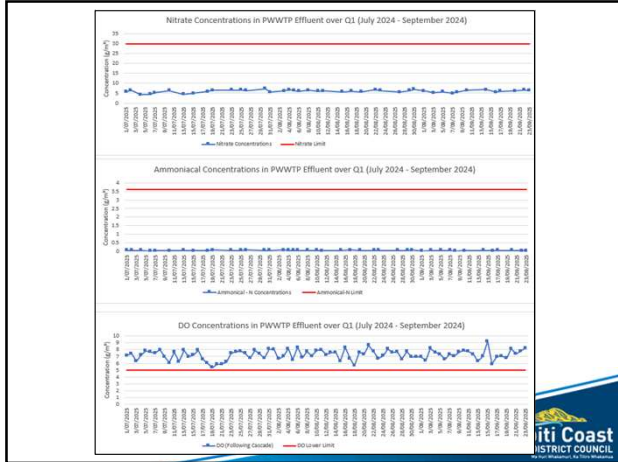
---

---

---

---

---



25

---

---

---

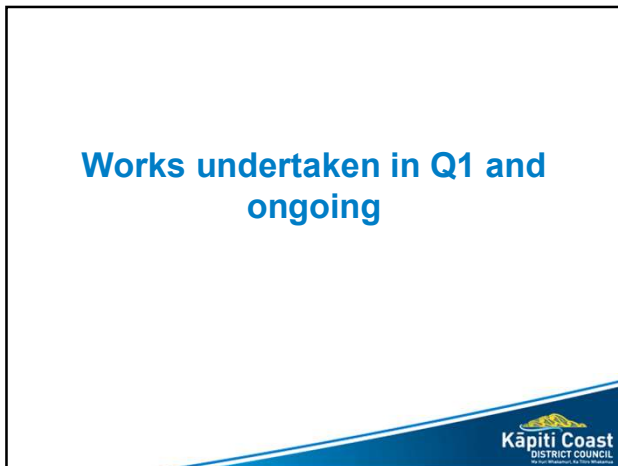
---

---

---

---

---



26

---

---

---

---

---


---

---

---

### Ongoing projects

- RAS-1 upgrade, new pH dosing plant, A-Recycling system upgrade – Complete
- Hydraulic debottlenecking of clarifier-3 and UV upgrade – design underway
- Inlet works – Procurement underway
- Clarifier-3 upgrade – Q2
- Sludge bed decommissioning – Ongoing
- WDWRM – Detailed design underway.



27

---

---

---

---

---

---

---

---

## CLG Feedback/Observations?

28

---

---

---

---

---

---

---

## Other matters

29

---

---

---

---

---

---

---

## WWTP reconstenting

- GWRC wants to push forward with a hearing – Te Atiawa declined invitation for pre-hearing meeting.
- NWEPS released late-November; WWTP discharge now covered by the NWEPS, but do not provide easier consenting pathway as originally indicated.
- KCDC evaluating options.

30

---

---

---

---

---

---

---

## Waikanae Duplicate Wastewater Rising Main (WDWRM)

- Total length around 4 km
- Middle Section (2.7 km) constructed in 2016 during expressway construction
- Southern Section (235 m) constructed in 2025
- Northern Section (1.1 km) needs to be constructed ASAP to enable Growth in Waikanae.



31

---

---

---

---

---

---

---

## WDWRM consenting

- WDWRM will provide necessary WW capacity for Waikanae to accommodate residential growth.
- KCDC has applied for resource consent for Middle (retrospective) & Northern sections of WDWRM.
- Te Atiawa opposes pipeline through Wahi Tapu site.



32

---

---

---

---

---

---

---

## WDWRM – Options Assessment



33

---

---

---

---

---

---

---

## Recommendations / Next Steps

---

---

---

---

---

---

---

## Next steps

- Next meeting March 2026

---

---

---

---

---

---

---