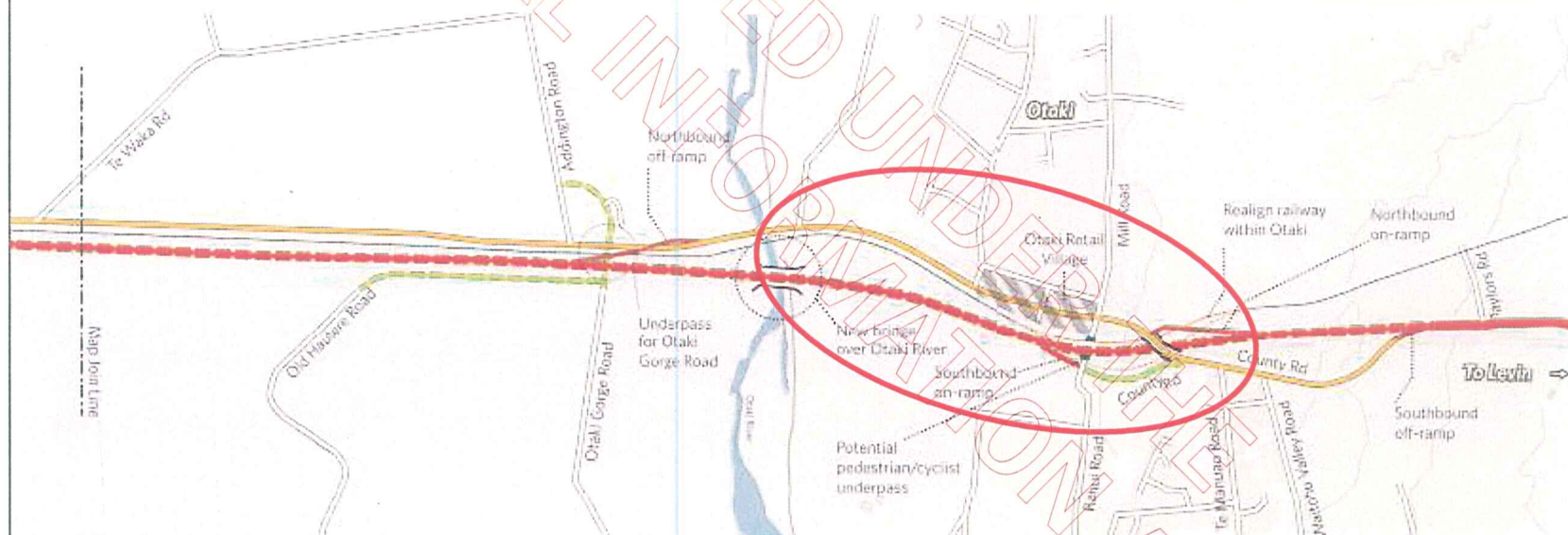




Peka Peka to Otaki - Description

1

SH1 Expressway Peka Peka to Otaki - 2002 Transit Board approved
(Te Horo to Otaki segment of plan)











Recommendation

RELEASED UNDER THE
OFFICIAL INFORMATION ACT



NZ TRANSPORT AGENCY
WAKA KOTAHI

New Zealand Government

Recommendation

- As a result of the consultation process it is proposed that the following design elements are reviewed in the next phase:
 - Interchange location and form at Otaki and appropriate signage for both Otaki and Te Horo
 - Access arrangements for Otaki and Te Horo are reviewed in light of submissions received
 - The design should allow for future double tracking of the rail line through Otaki
 - The alignment is reassessed against current planning requirements prior to the preparation of NoR applications
 - NZTA should work with KDCDC, the Otaki Community Board and the community in general with a view to integrating the Expressway with the proposals set out in the Otaki Community Vision document
- It is recommended that the NZTA Board:
 - Endorses the Transit approved route as the preferred route between Peka Peka and north of Otaki, subject to reviewing some of the design elements and connectivity with the local road network in Otaki town centre as set out above



Board discussion



NZ TRANSPORT AGENCY
WAKA KOTAHI

New Zealand Government

MacKays to Peka Peka



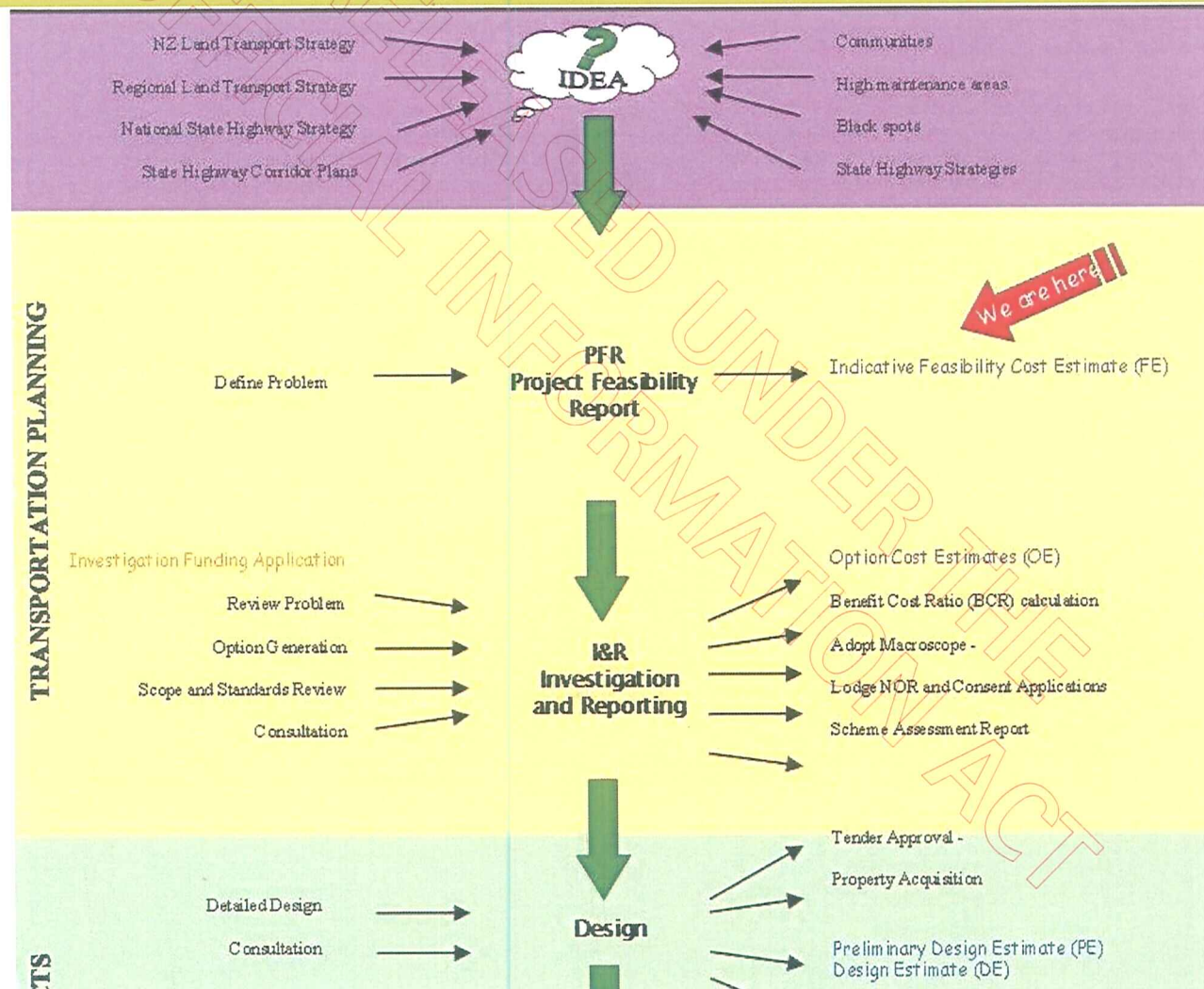
NZ TRANSPORT AGENCY
WAKA KOTAHI

New Zealand Government



Summary of work to date

Overview of work in Project lifecycle



MacKays to Peka Peka – RoNS Consultation

- o Initially started consultation on two options
- o Consultation extended to include a third option following significant public feedback
- o Consultation closed on 30 Oct

OFFICIAL INFORMATION ACT
RELEASED UNDER THE

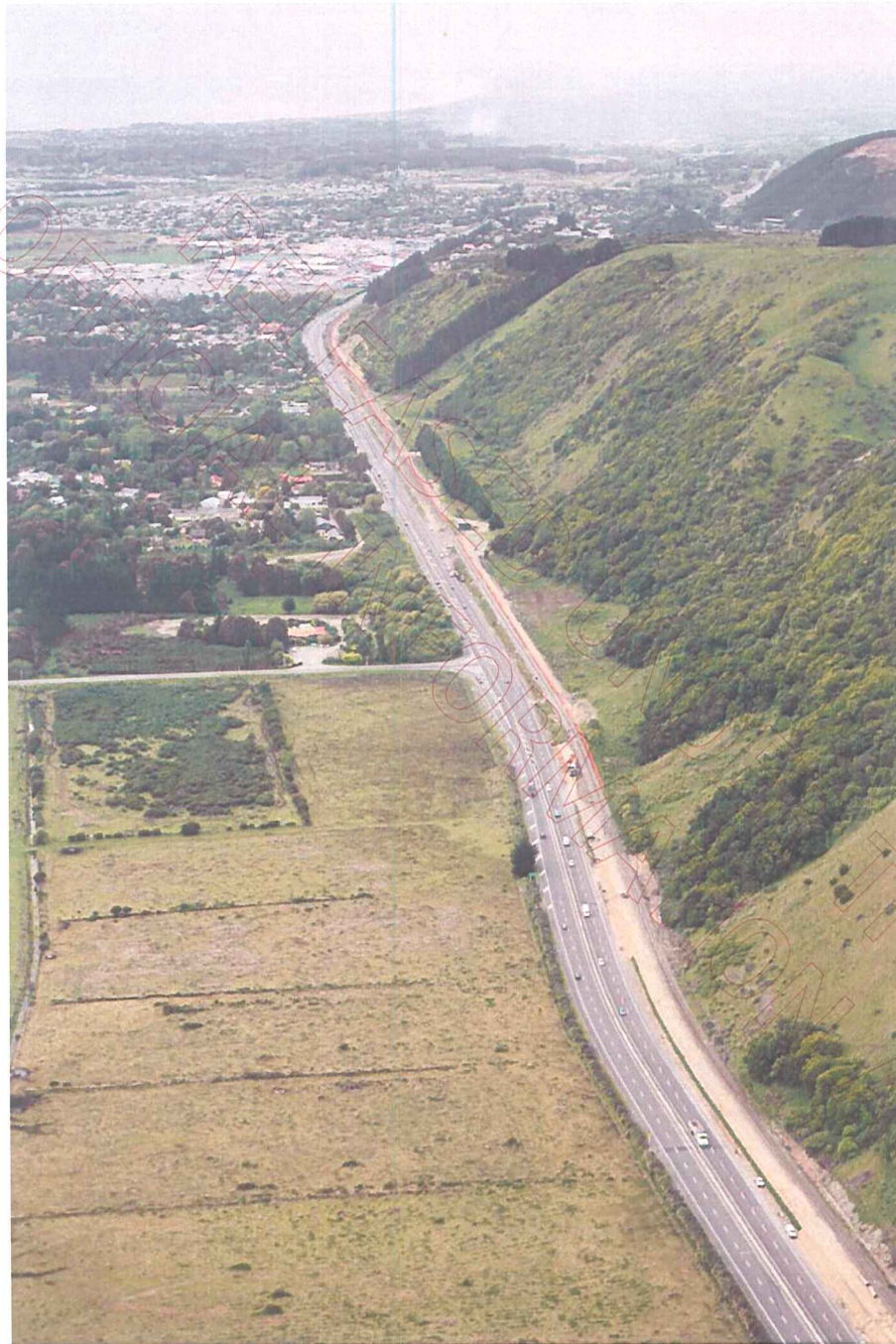
The Sandhills Option



NZ TRANSPORT AGENCY
WAKA KOTAHI

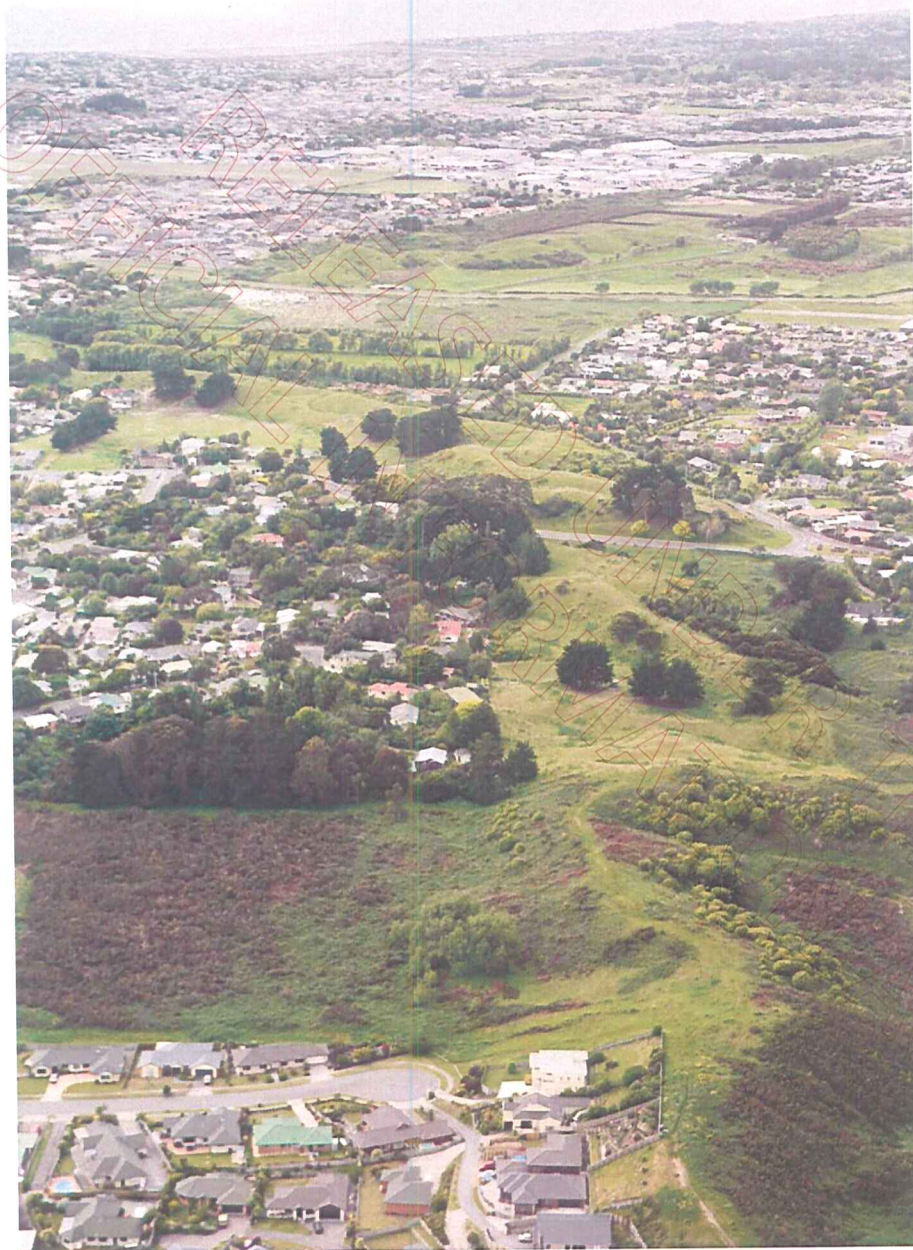
New Zealand Government











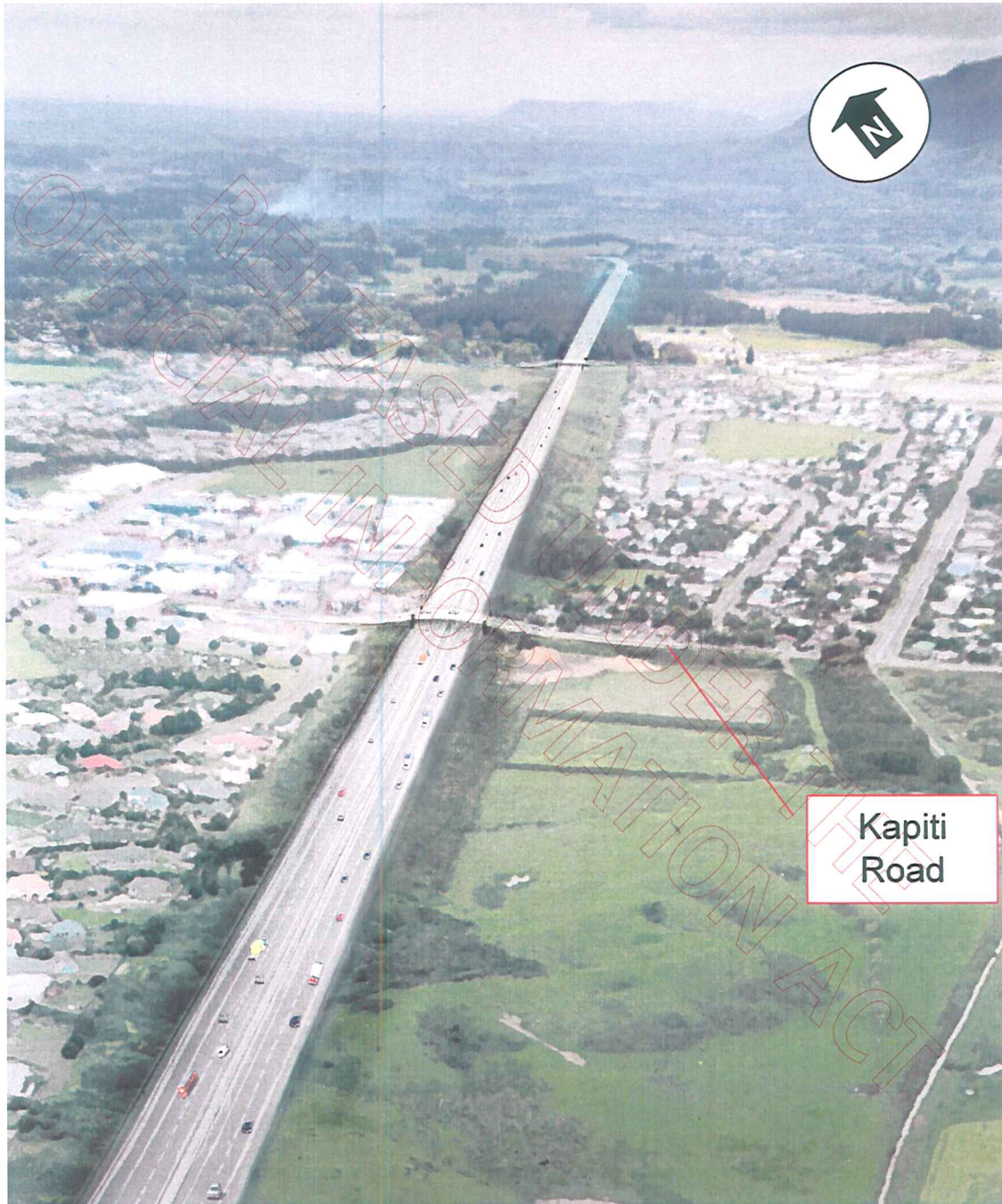


MacKays Crossing to Peka Peka - Concept Map

WLR Option: SH1 Expressway following the Western Link Road Corridor







Kapiti
Road

