

Te Uruhi

The Te Uruhi biosecurity and visitor discovery centre will enhance the Kāpiti experience by celebrating our rich culture and history and strengthening protection of our taonga – Kāpiti Island.

The resource consent process for the building is underway. All going well, the opening date is expected around late 2023, depending on the resource consent process and the availability of building supplies. Local company FPL is our lead construction contractor.

Visitor discovery centre

The visitor discovery centre will enhance people's experience at Maclean Park through interactive and engaging story telling. It'll be a place where locals can learn about and deepen their connections to our district. It'll help create advocates for conservation of Kāpiti Island and our marine reserve. Information about other tourism activities on offer across Kāpiti will encourage visitors to stay longer and contribute more to our local economy.

We're working with our iwi partners and stakeholders to create stories centred on the Te Uruhi and Kāpiti Island rohe (area).

Whakairo (carved) art works in and around the building will re-establish the profile and mana of mana whenua who are deeply connected to Te Uruhi.

Early concept designs of the Visitor Discovery Centre (changes are possible)



Plan view



Viewing window

Coastal hazards at Te Uruhi

To mitigate the risk from coastal hazards, the building pods will be relocatable. They'll be installed at least 3.4 metres above sea level (higher than the recommended 3.2 metres for this location). Combined with dune protection, this is expected to protect the building from the effects of sea-level rise in the foreseeable future.

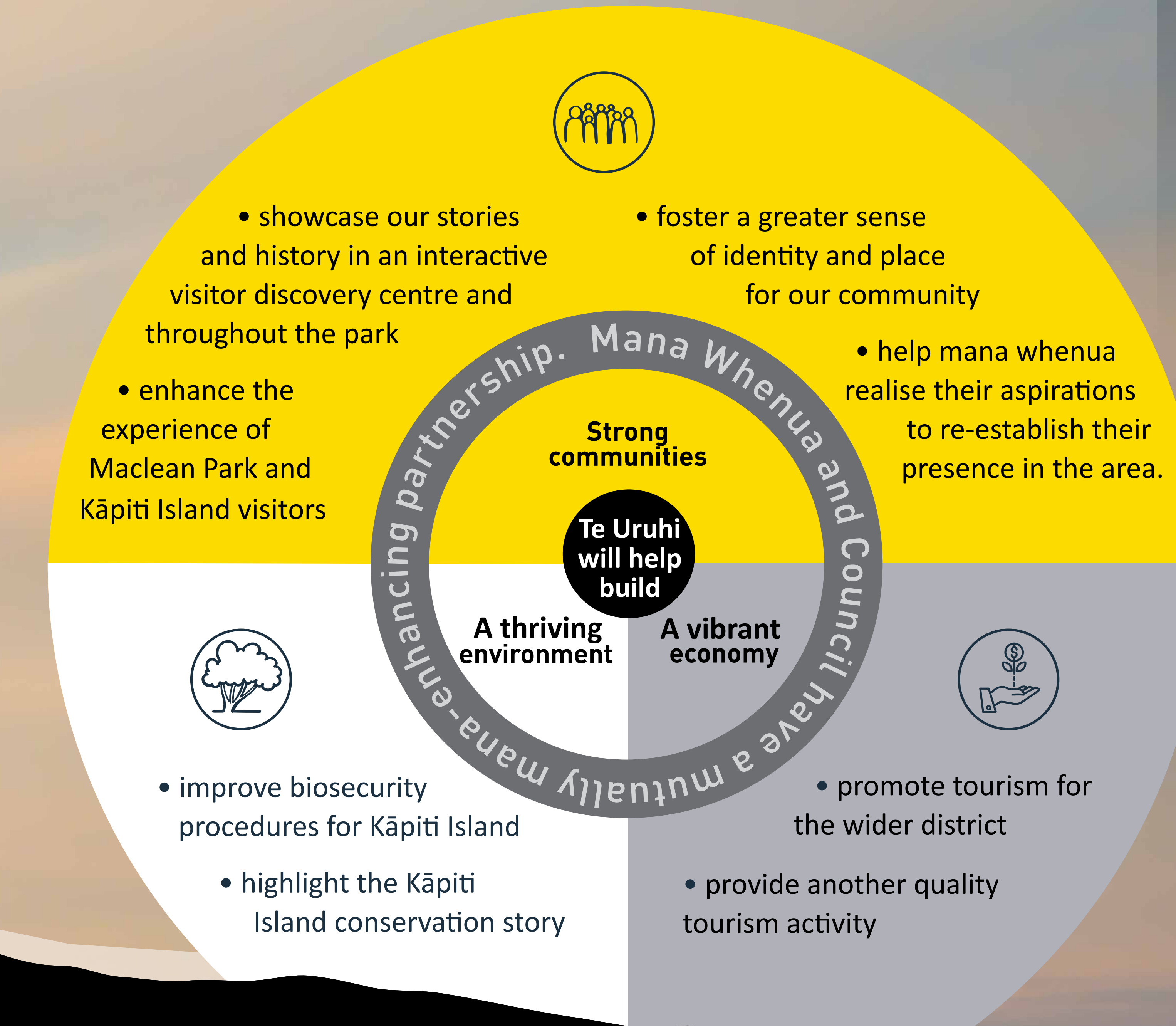


“Ngāti Toa is committed to the successful development and operation of Te Uruhi as a mana enhancing initiative and gateway attraction for Kāpiti. We are very pleased to learn of the Council's continued support and look forward to working with Council and our Mana Whenua whanaunga to realise the benefits of our collective vision for Te Uruhi.”

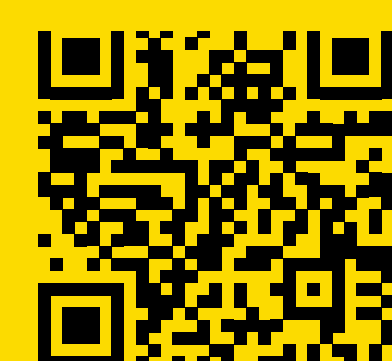
Helmut Modlik, Chief Executive Officer at
Te Rūnanga o Toa Rangatira Incorporated

“Ātiawa ki Whakarongotai affirms the vision of our rangatahi to reimagine the significance and sacredness of our mana whenua and mana moana responsibilities where the land meets the gateway to Kāpiti Island. Te Uruhi is an extension of this vision which will embrace our community and manuhiri visiting our rohe.”

André Baker, Chairman & Chris Gerretzen, Board Member,
Ātiawa ki Whakarongotai Charitable Trust.



SCAN FOR
MORE INFO



MAY 2022

www.kapiticoast.govt.nz/teuruhi email: teuruhi@kapiticoast.govt.nz

